

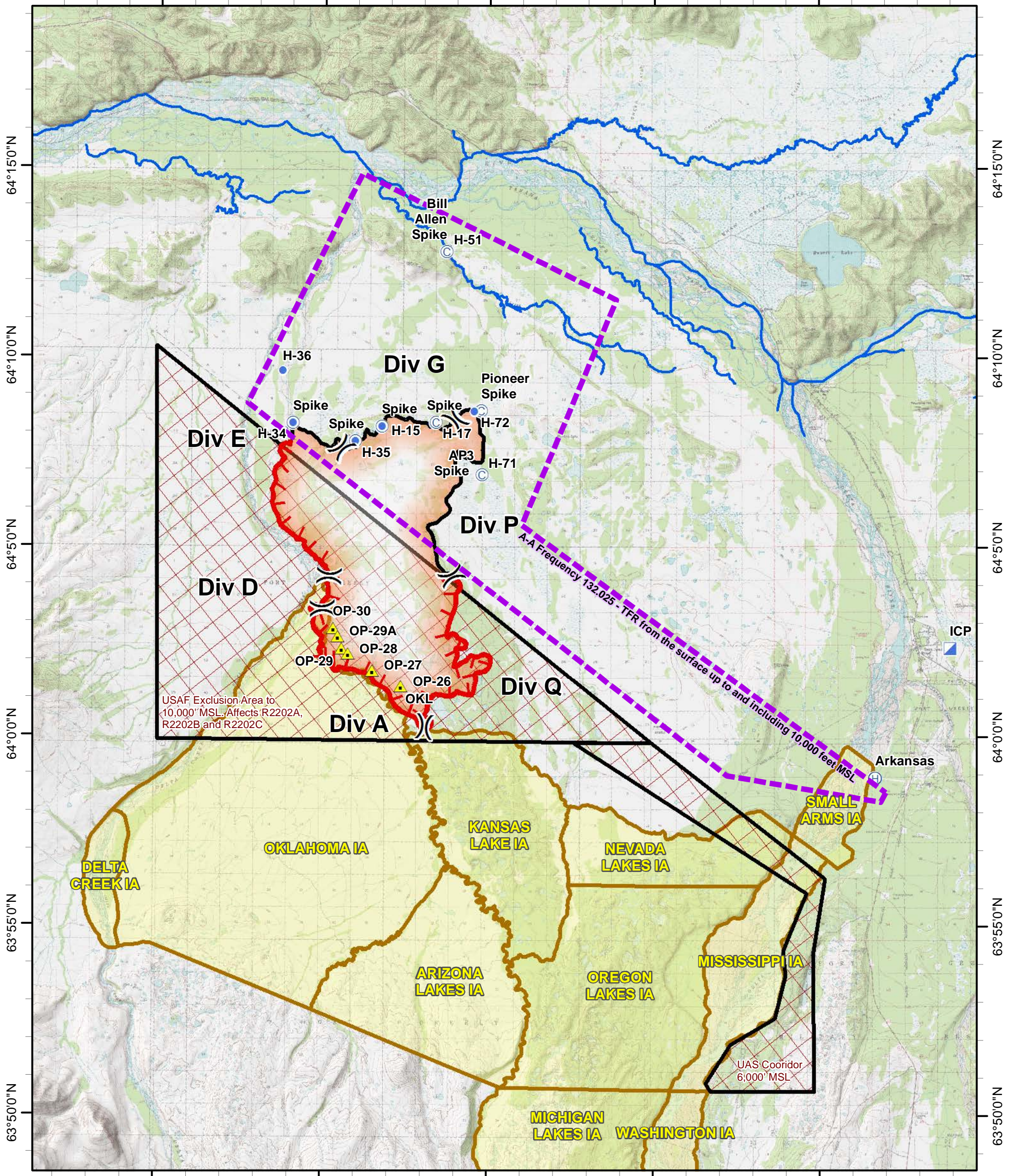


Air Operations June 18, 2014

Approx 23,270 acres
as of 6/16/14 1800 hrs

Alaska Albers
NAD 83

146°30'0"W 146°20'0"W 146°10'0"W 146°0'0"W 145°50'0"W

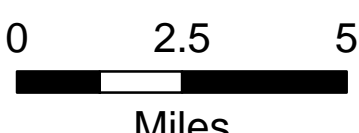


USAF Exclusion Area to 10,000' MSL, Affects R2202A, R2202B and R2202C

A-A Frequency 132.025 - TFR from the surface up to and including 10,000 feet MSL

UAS Corridor 6,000' MSL

- ⊙ Camp
- ⊕ Helibase
- Helispot
- ▣ Incident Command Post
- ▲ Other
- Uncontrolled Fire Edge
- Completed Line
- Anadromous Streams
- TFR 6-11-2014
- USAF Exclusion Area
- Military Impact Area



| Label | Lat North DDM | Long West DDM | Label | Lat North DDM | Long West DDM |
|-------------------|---------------|---------------|------------------|---------------|---------------|
| Arkansas Helibase | 63° 58.950' | 145° 46.662' | Pioneer Spike | 64° 08.620' | 146° 10.483' |
| H-15/Spike | 64° 08.220' | 146° 16.495' | Bill Allen Spike | 64° 12.827' | 146° 12.588' |
| H-17/Spike | 64° 08.325' | 146° 13.226' | OP-26 | 64° 01.350' | 146° 15.264' |
| H-34/Spike | 64° 08.300' | 146° 21.877' | OP-27 | 64° 01.770' | 146° 17.004' |
| H-35/Spike | 64° 07.812' | 146° 18.096' | OP-28 | 64° 02.208' | 146° 18.492' |
| H-36 | 64° 09.669' | 146° 22.514' | OP-29 | 64° 02.352' | 146° 18.852' |
| H-51 | 64° 12.827' | 146° 12.588' | OP-29A | 64° 02.676' | 146° 19.110' |
| H-71/Spike | 64° 06.941' | 146° 10.426' | OP-30 | 64° 02.880' | 146° 19.386' |
| H-72 | 64° 08.619' | 146° 10.904' | | | |