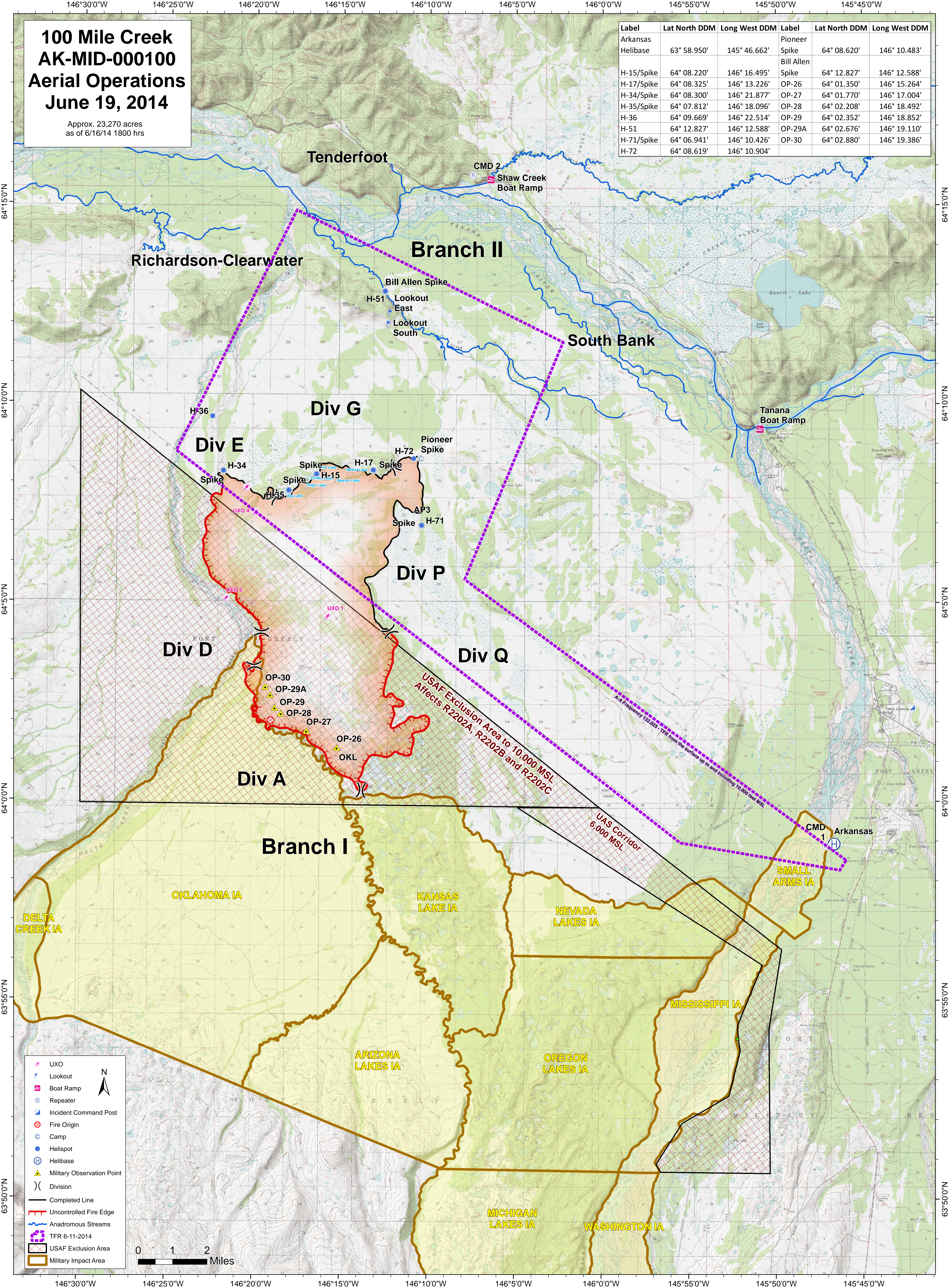


100 Mile Creek AK-MID-000100 Aerial Operations June 19, 2014

Approx. 23,270 acres
as of 6/16/14 1800 hrs

Label	Lat North DDM	Long West DDM	Label	Lat North DDM	Long West DDM
Arkansas Helibase	63° 58.950'	145° 46.662'	Pioneer Spike	64° 08.620'	146° 10.483'
H-15/Spike	64° 08.220'	146° 16.495'	Bill Allen		
H-17/Spike	64° 08.325'	146° 13.226'	Spike	64° 12.827'	146° 12.588'
H-34/Spike	64° 08.300'	146° 21.877'	OP-26	64° 01.350'	146° 15.264'
H-35/Spike	64° 07.812'	146° 18.096'	OP-27	64° 01.770'	146° 17.004'
H-36	64° 09.669'	146° 22.514'	OP-28	64° 02.208'	146° 18.492'
H-51	64° 12.827'	146° 12.588'	OP-29	64° 02.352'	146° 18.852'
H-71/Spike	64° 06.941'	146° 10.426'	OP-29A	64° 02.676'	146° 19.110'
H-72	64° 08.619'	146° 10.904'	OP-30	64° 02.880'	146° 19.386'



- UXO
- Lookout
- Boat Ramp
- Repeater
- Incident Command Post
- Fire Origin
- Camp
- Helispot
- Helibase
- Military Observation Point
- Division
- Completed Line
- Uncontrolled Fire Edge
- Anadromous Streams
- TFR 6-11-2014
- USAF Exclusion Area
- Military Impact Area

0 1 2 Miles

USAF Exclusion Area to 10,000 MSL
Affects R2202A, R2202B and R2202C

UAS Corridor
6,000 MSL

A-A Frequency 132.025 TFR from the surface up to and including 10,000 feet MSL

DELTA CREEK IA
OKLAHOMA IA
KANSAS LAKE IA
NEVADA LAKES IA
MISSISSIPPI IA
ARIZONA LAKES IA
OREGON LAKES IA
MICHIGAN LAKES IA
WASHINGTON IA