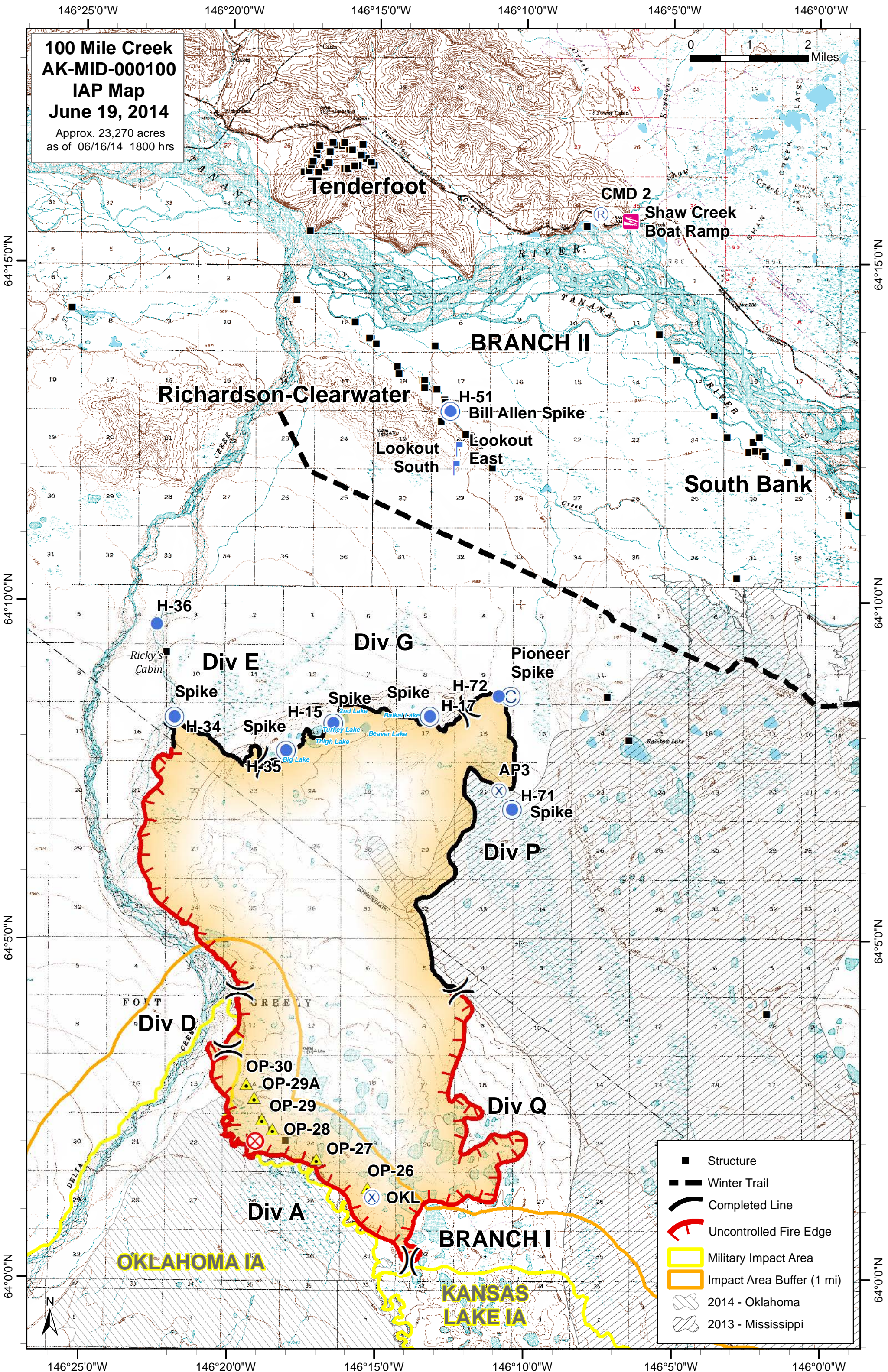


**100 Mile Creek
AK-MID-000100
IAP Map
June 19, 2014**

Approx. 23,270 acres
as of 06/16/14 1800 hrs



- Structure
- Winter Trail
- Completed Line
- Uncontrolled Fire Edge
- Military Impact Area
- Impact Area Buffer (1 mi)
- 2014 - Oklahoma
- 2013 - Mississippi

64°15'0"N
64°10'0"N
64°50'0"N
64°0'0"N

146°25'0"W
146°20'0"W
146°15'0"W
146°10'0"W
146°5'0"W
146°0'0"W