

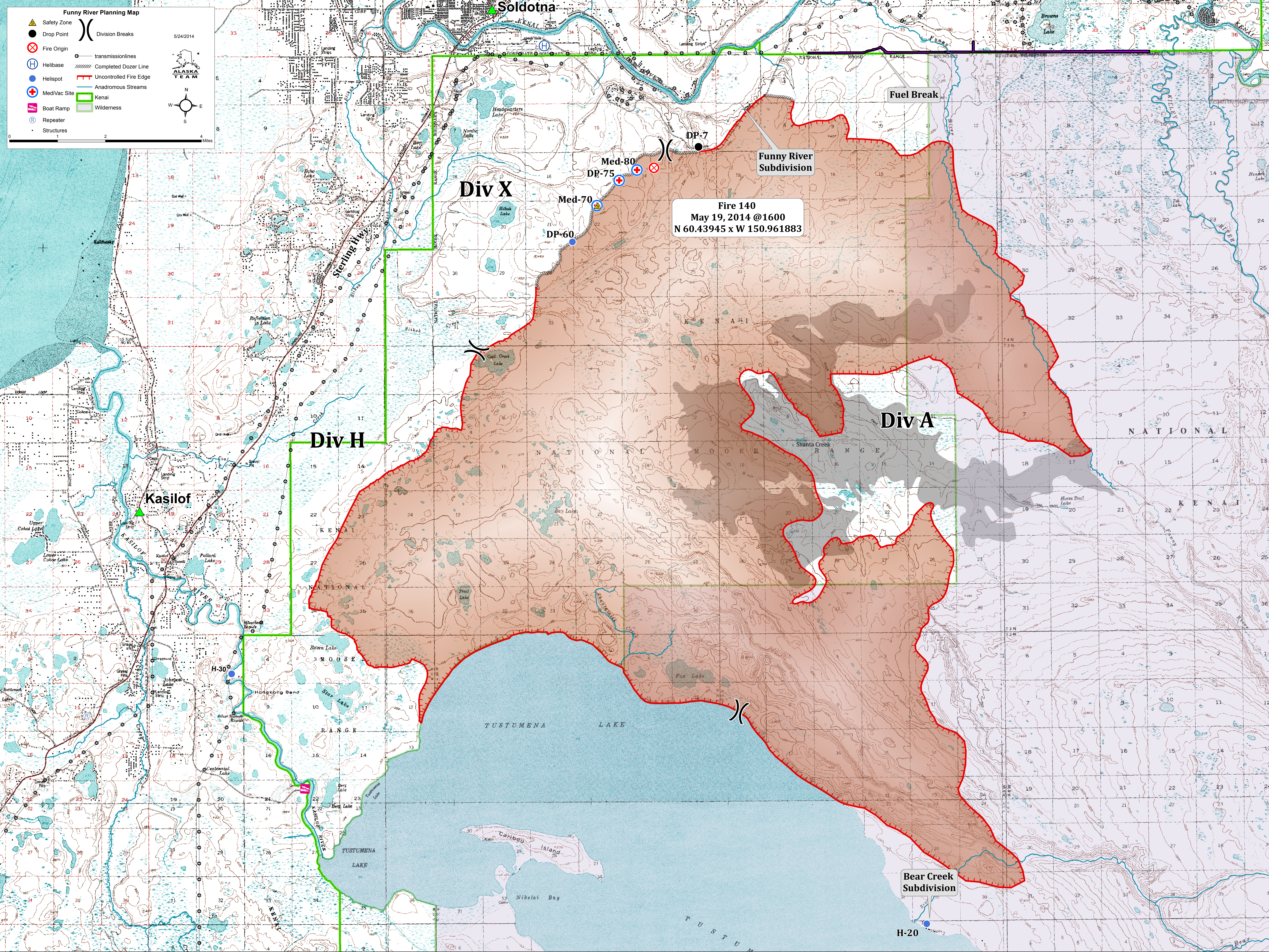
Funny River Planning Map

5/24/2014

ALASKA TEAM

0 1 2 4 Miles

- Safety Zone (Yellow triangle)
- Drop Point (Black circle)
- Fire Origin (Red circle with X)
- Helibase (Blue circle with H)
- Helispot (Blue circle with +)
- MediVac Site (Red circle with +)
- Boat Ramp (Pink rectangle)
- Repeater (Blue circle with R)
- Structures (Black dots)
- Division Breaks (Black X)
- transmissionlines (Black line with dots)
- Completed Dozer Line (Red dashed line)
- Uncontrolled Fire Edge (Red solid line)
- Anadromous Streams (Blue line)
- Kenai (Green outline)
- Wilderness (Green outline)



Fire 140
 May 19, 2014 @1600
 N 60.43945 x W 150.961883

Div X

Div H

Div A

Fuel Break

Funny River Subdivision

Bear Creek Subdivision

Kasilof

Soldotna

Med-80

DP-75

Med-70

DP-60

DP-7

H-30

H-20

TUSTUMENA LAKE

TUSTUMENA LAKE

Cakibou Island

Nikolai Bay

Shanta Creek

NATIONAL

KENAI

NATIONAL

MOOSE

RANGE

RANGE

TUSTUMENA LAKE

TUSTUMENA LAKE

TUSTUMENA LAKE

TUSTUMENA LAKE