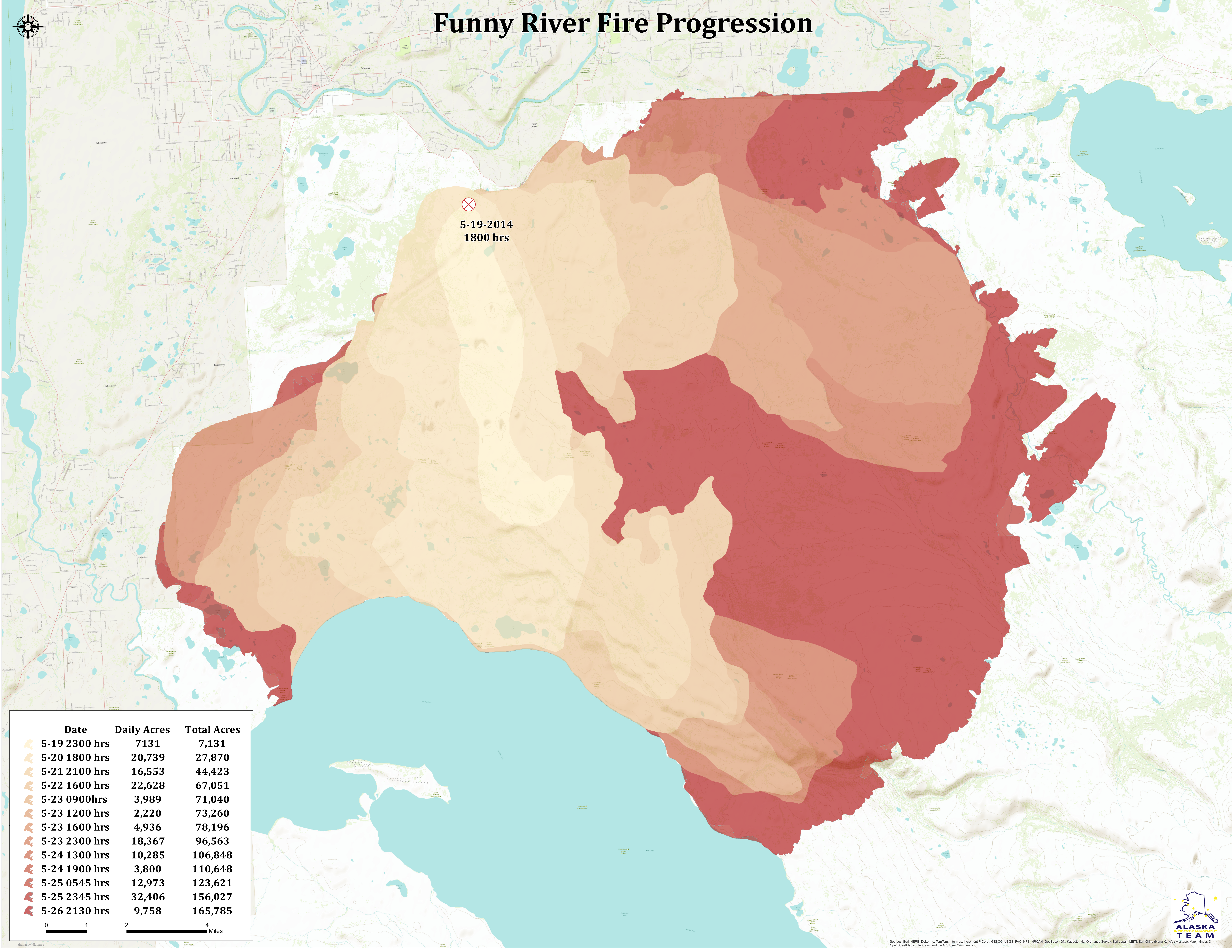
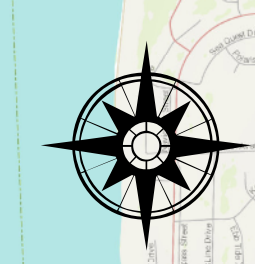


# Funny River Fire Progression



⊗  
5-19-2014  
1800 hrs

Date	Daily Acres	Total Acres
5-19 2300 hrs	7,131	7,131
5-20 1800 hrs	20,739	27,870
5-21 2100 hrs	16,553	44,423
5-22 1600 hrs	22,628	67,051
5-23 0900hrs	3,989	71,040
5-23 1200 hrs	2,220	73,260
5-23 1600 hrs	4,936	78,196
5-23 2300 hrs	18,367	96,563
5-24 1300 hrs	10,285	106,848
5-24 1900 hrs	3,800	110,648
5-25 0545 hrs	12,973	123,621
5-25 2345 hrs	32,406	156,027
5-26 2130 hrs	9,758	165,785

