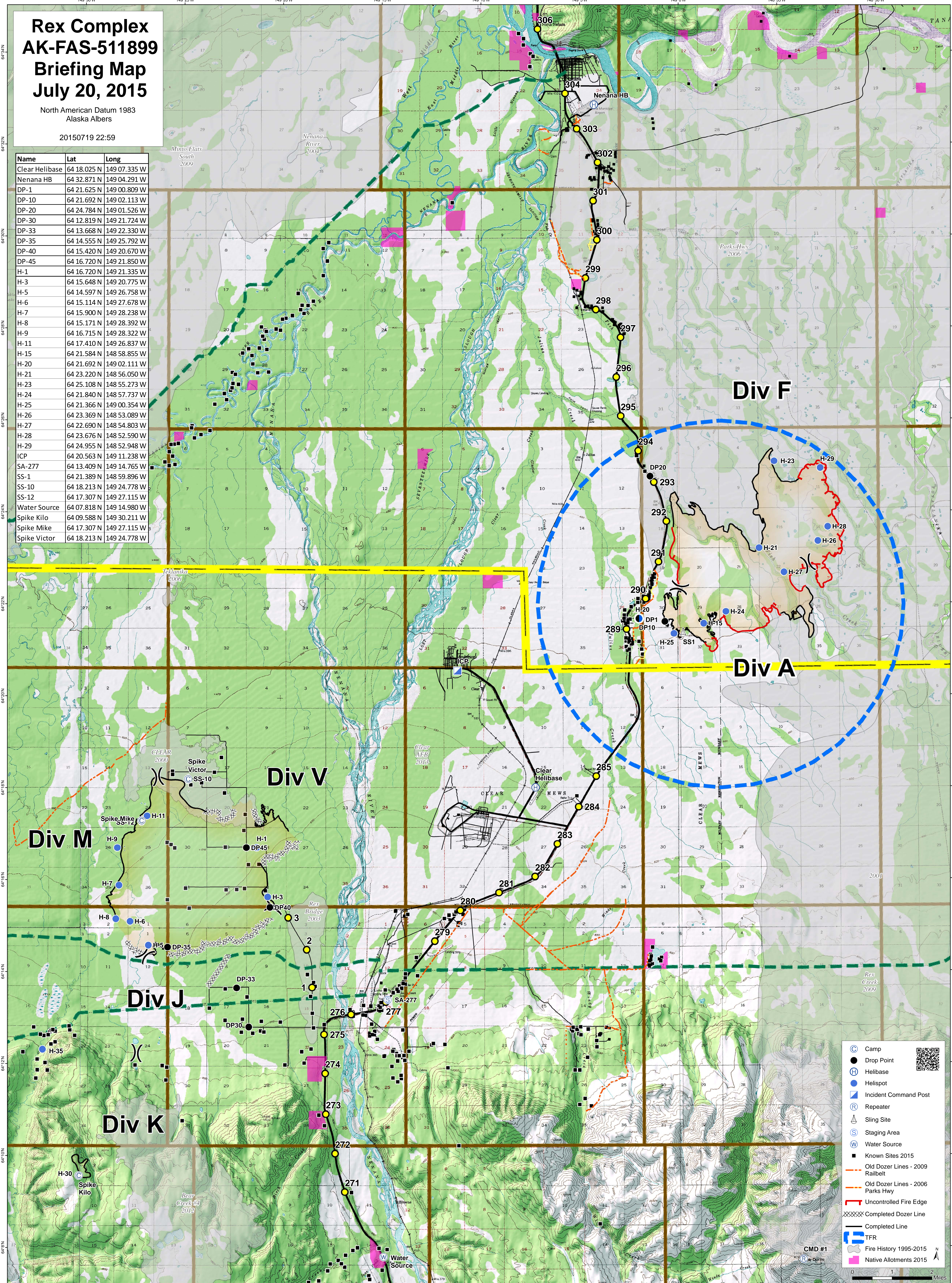


Rex Complex AK-FAS-511899 Briefing Map July 20, 2015

North American Datum 1983
Alaska Albers

20150719 22:59

Name	Lat	Long
Clear Helibase	64 18.025 N	149 07.335 W
Nenana HB	64 32.871 N	149 04.291 W
DP-1	64 21.625 N	149 00.809 W
DP-10	64 21.692 N	149 02.113 W
DP-20	64 24.784 N	149 01.526 W
DP-30	64 12.819 N	149 21.724 W
DP-33	64 13.668 N	149 22.330 W
DP-35	64 14.555 N	149 25.792 W
DP-40	64 15.420 N	149 20.670 W
DP-45	64 16.720 N	149 21.850 W
H-1	64 16.720 N	149 21.335 W
H-3	64 15.648 N	149 20.775 W
H-5	64 14.597 N	149 26.758 W
H-6	64 15.114 N	149 27.678 W
H-7	64 15.900 N	149 28.238 W
H-8	64 15.171 N	149 28.392 W
H-9	64 16.715 N	149 28.322 W
H-11	64 17.410 N	149 26.837 W
H-15	64 21.584 N	148 58.855 W
H-20	64 21.692 N	149 02.111 W
H-21	64 23.220 N	148 56.050 W
H-23	64 25.108 N	148 55.273 W
H-24	64 21.840 N	148 57.737 W
H-25	64 21.366 N	149 00.354 W
H-26	64 23.369 N	148 53.089 W
H-27	64 22.690 N	148 54.803 W
H-28	64 23.676 N	148 52.590 W
H-29	64 24.955 N	148 52.948 W
ICP	64 20.563 N	149 11.238 W
SA-277	64 13.409 N	149 14.765 W
SS-1	64 21.389 N	148 59.896 W
SS-10	64 18.213 N	149 24.778 W
SS-12	64 17.307 N	149 27.115 W
Water Source	64 07.818 N	149 14.980 W
Spike Kilo	64 09.588 N	149 30.211 W
Spike Mike	64 17.307 N	149 27.115 W
Spike Victor	64 18.213 N	149 24.778 W



- C Camp
- Drop Point
- H Helibase
- Helispot
- Incident Command Post
- R Repeater
- S Sling Site
- S Staging Area
- W Water Source
- Known Sites 2015
- Old Dozer Lines - 2009
- Railbelt
- Old Dozer Lines - 2006
- Parks Hwy
- Uncontrolled Fire Edge
- Completed Dozer Line
- Completed Line
- TFR
- Fire History 1995-2015
- Native Allotments 2015

CMD #1

0 1 2 Miles

N