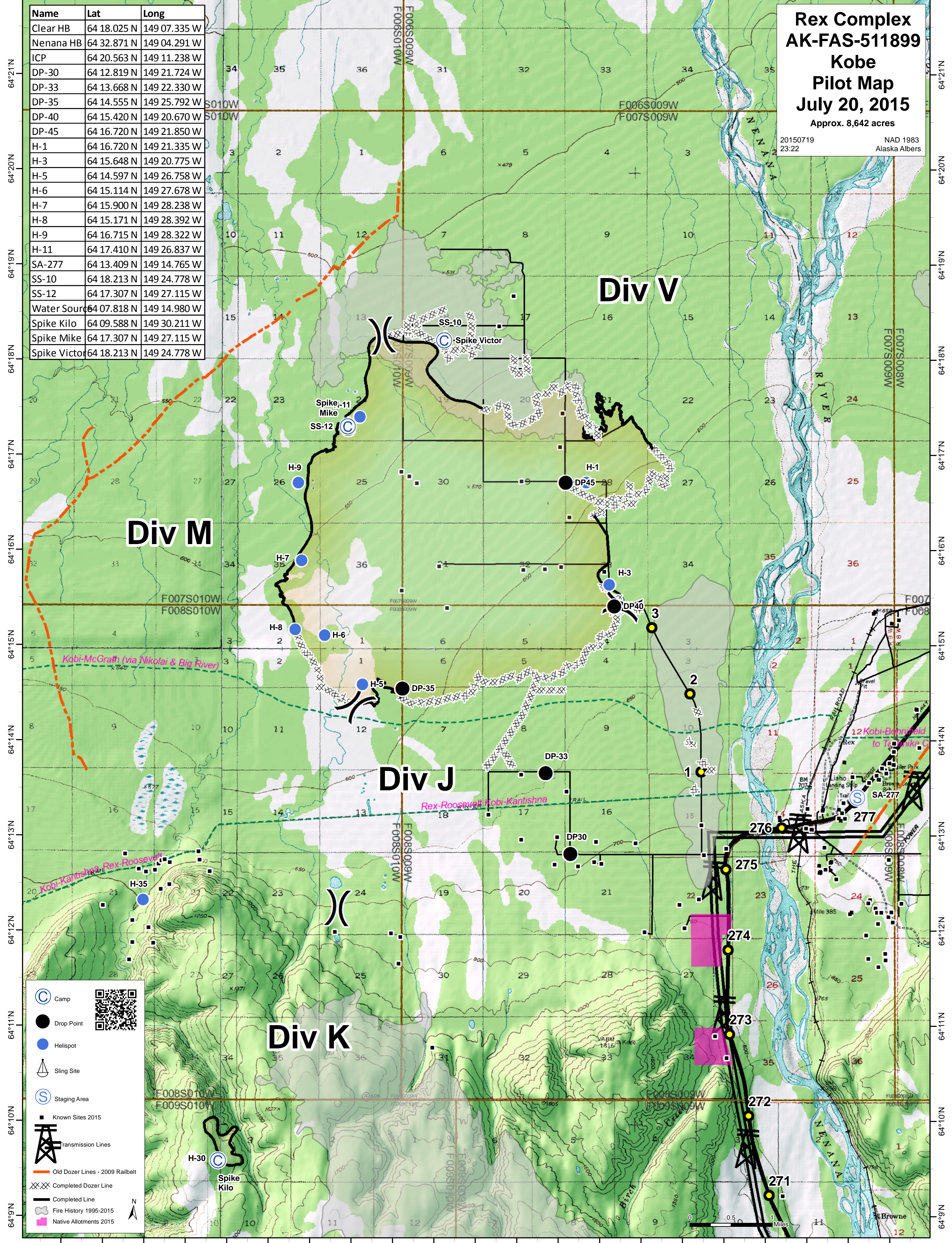


149°35'W 149°34'W 149°33'W 149°32'W 149°31'W 149°30'W 149°29'W 149°28'W 149°27'W 149°26'W 149°25'W 149°24'W 149°23'W 149°22'W 149°21'W 149°20'W 149°19'W 149°18'W 149°17'W 149°16'W 149°15'W 149°14'W 149°13'W

**Rex Complex
AK-FAS-511899
Kobe
Pilot Map
July 20, 2015**
Approx. 8,642 acres
20150719 23:22 NAD 1983 Alaska Albers

Name	Lat	Long
Clear HB	64 18.025 N	149 07.335 W
Nenana HB	64 32.871 N	149 04.291 W
ICP	64 20.563 N	149 11.238 W
DP-30	64 12.819 N	149 21.724 W
DP-33	64 13.668 N	149 22.330 W
DP-35	64 14.555 N	149 25.792 W
DP-40	64 15.420 N	149 20.670 W
DP-45	64 16.720 N	149 21.850 W
H-1	64 16.720 N	149 21.335 W
H-3	64 15.648 N	149 20.775 W
H-5	64 14.597 N	149 26.758 W
H-6	64 15.114 N	149 27.678 W
H-7	64 15.900 N	149 28.238 W
H-8	64 15.171 N	149 28.392 W
H-9	64 16.715 N	149 28.322 W
H-11	64 17.410 N	149 26.837 W
SA-277	64 13.409 N	149 14.765 W
SS-10	64 18.213 N	149 24.778 W
SS-12	64 17.307 N	149 27.115 W
Water Source	64 07.818 N	149 14.980 W
Spike Kilo	64 09.588 N	149 30.211 W
Spike Mike	64 17.307 N	149 27.115 W
Spike Victor	64 18.213 N	149 24.778 W



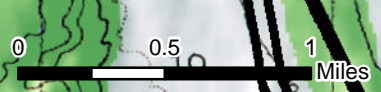
Div M

Div V

Div J

Div K

- Camp
- Drop Point
- Helispot
- Sling Site
- Staging Area
- Known Sites 2015
- Transmission Lines
- Old Dozer Lines - 2009 Railbelt
- Completed Dozer Line
- Completed Line
- Fire History 1995-2015
- Native Allotments 2015



149°34'W 149°33'W 149°32'W 149°31'W 149°30'W 149°29'W 149°28'W 149°27'W 149°26'W 149°25'W 149°24'W 149°23'W 149°22'W 149°21'W 149°20'W 149°19'W 149°18'W 149°17'W 149°16'W 149°15'W 149°14'W