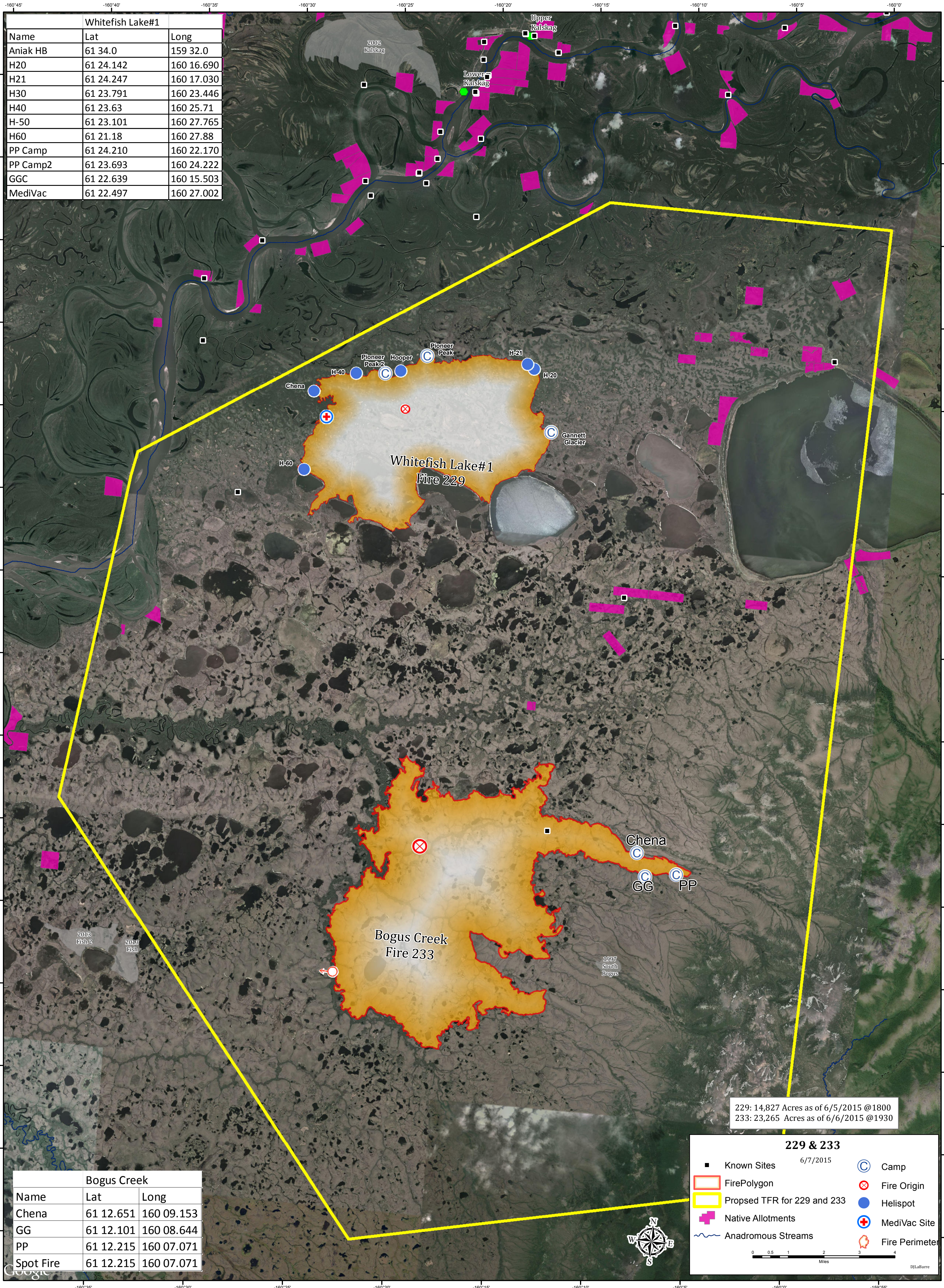


| Whitefish Lake#1 | | |
|------------------|-----------|------------|
| Name | Lat | Long |
| Aniak HB | 61 34.0 | 159 32.0 |
| H20 | 61 24.142 | 160 16.690 |
| H21 | 61 24.247 | 160 17.030 |
| H30 | 61 23.791 | 160 23.446 |
| H40 | 61 23.63 | 160 25.71 |
| H-50 | 61 23.101 | 160 27.765 |
| H60 | 61 21.18 | 160 27.88 |
| PP Camp | 61 24.210 | 160 22.170 |
| PP Camp2 | 61 23.693 | 160 24.222 |
| GGC | 61 22.639 | 160 15.503 |
| MediVac | 61 22.497 | 160 27.002 |



| Bogus Creek | | |
|-------------|-----------|------------|
| Name | Lat | Long |
| Chena | 61 12.651 | 160 09.153 |
| GG | 61 12.101 | 160 08.644 |
| PP | 61 12.215 | 160 07.071 |
| Spot Fire | 61 12.215 | 160 07.071 |

229: 14,827 Acres as of 6/5/2015 @1800
 233: 23,265 Acres as of 6/6/2015 @1930

229 & 233
6/7/2015

- Known Sites
- ▭ Fire Polygon
- ▭ Proposed TFR for 229 and 233
- Native Allotments
- ~ Anadromous Streams
- ⊙ Camp
- ⊗ Fire Origin
- Helispot
- ⊕ MediVac Site
- ⊙ Fire Perimeter

0 0.5 1 2 3 4 Miles

DJLaBarre

