

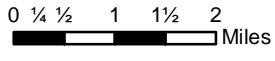
160°24'W 160°22'W 160°20'W 160°18'W 160°16'W 160°14'W 160°12'W 160°10'W 160°8'W 160°6'W 160°4'W 160°2'W 160°0'W

### Bogus Creek

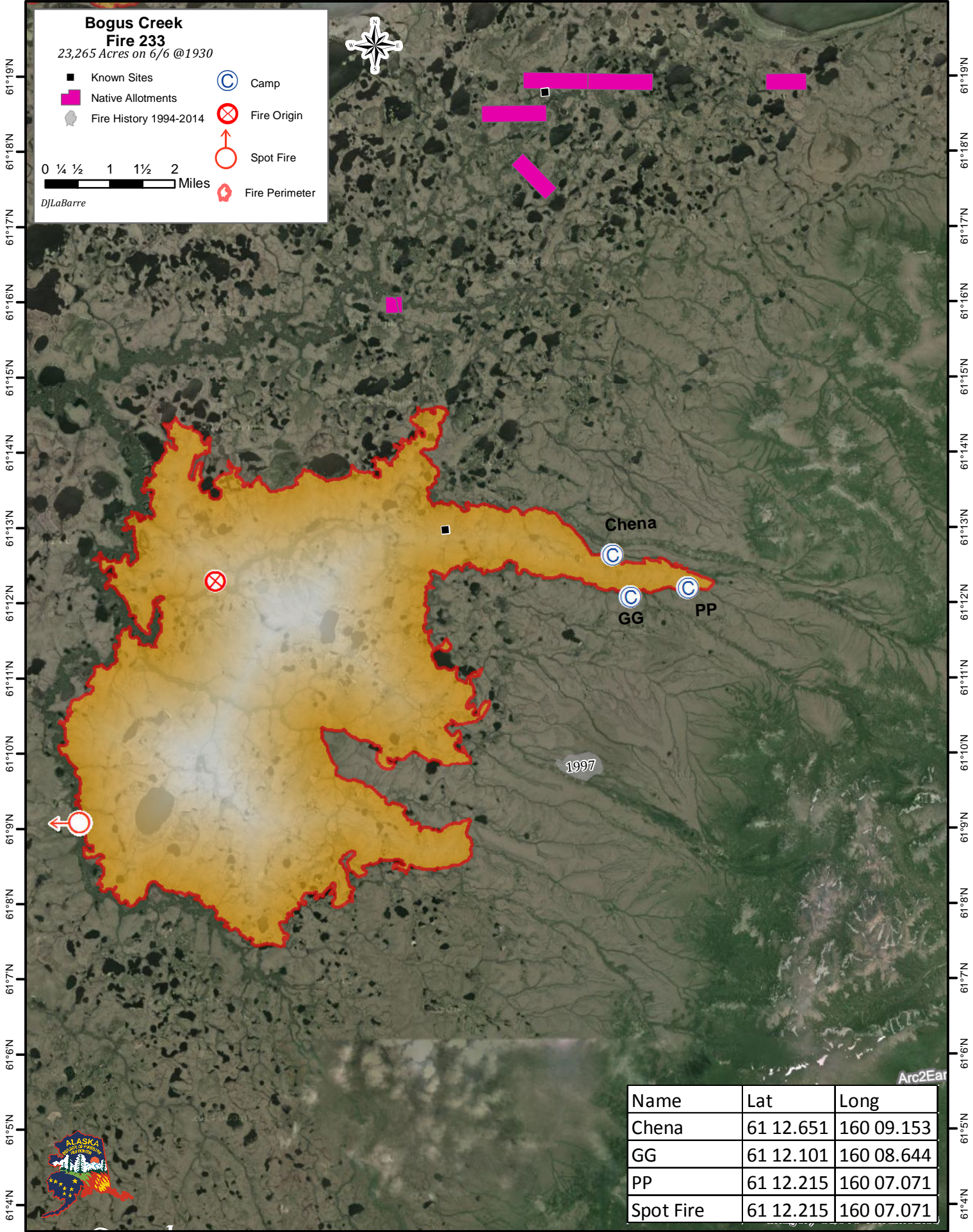
### Fire 233

23,265 Acres on 6/6 @1930

- Known Sites
- Native Allotments
- ⊙ Fire History 1994-2014
- ⊙ Camp
- ⊗ Fire Origin
- ↑ Spot Fire
- ⬇ Fire Perimeter



DJLaBarre



Name	Lat	Long
Chena	61 12.651	160 09.153
GG	61 12.101	160 08.644
PP	61 12.215	160 07.071
Spot Fire	61 12.215	160 07.071

Arc2Ear



160°24'W 160°22'W 160°20'W 160°18'W 160°16'W 160°14'W 160°12'W 160°10'W 160°8'W 160°6'W 160°4'W 160°2'W 160°0'W