
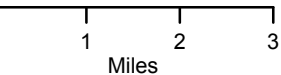
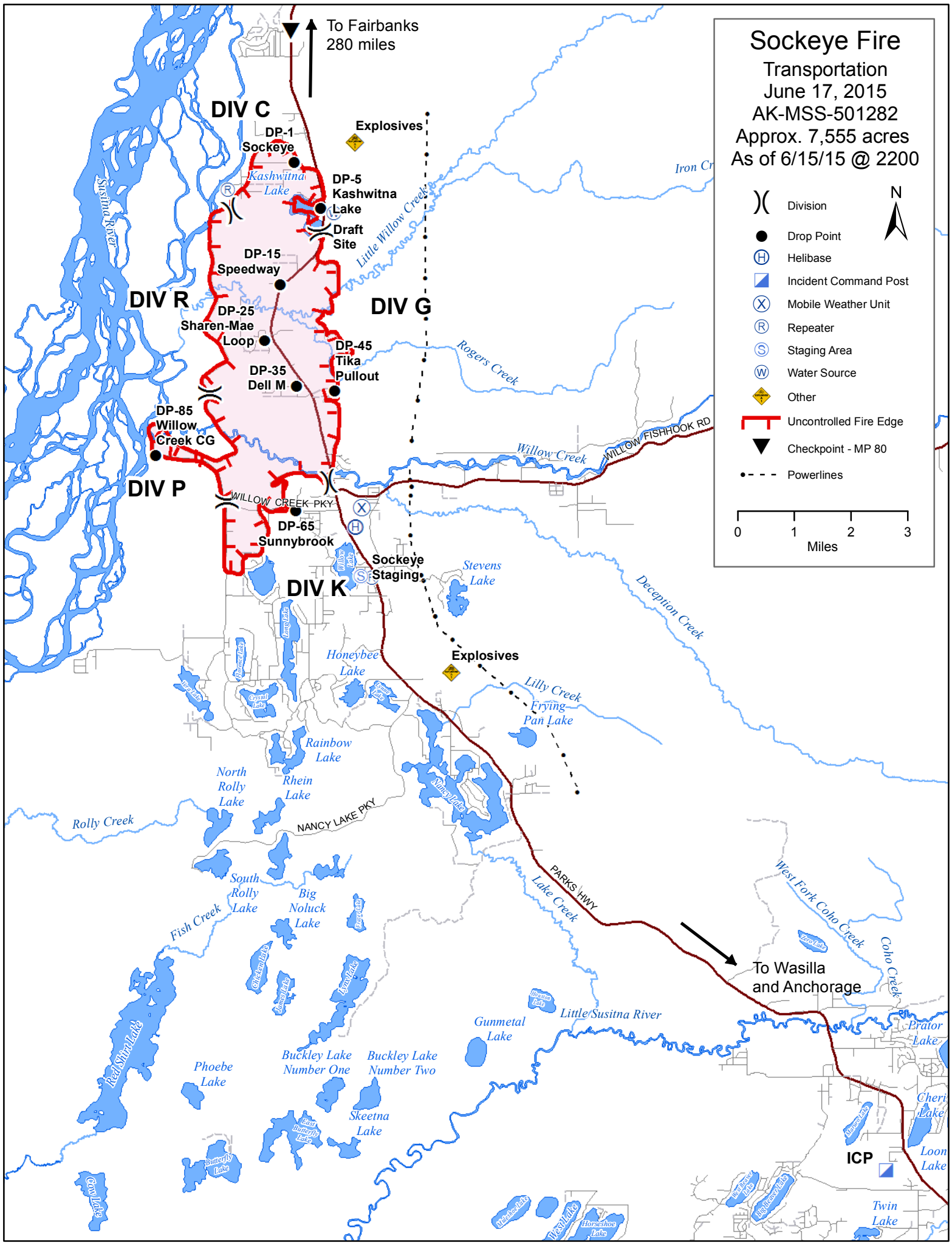


Sockeye Fire

Transportation
 June 17, 2015
 AK-MSS-501282
 Approx. 7,555 acres
 As of 6/15/15 @ 2200



- () Division
- Drop Point
- (H) Helibase
- (I) Incident Command Post
- (X) Mobile Weather Unit
- (R) Repeater
- (S) Staging Area
- (W) Water Source
- ◆ Other
- Uncontrolled Fire Edge
- ▼ Checkpoint - MP 80
- Powerlines

To Fairbanks
280 miles

To Wasilla
and Anchorage

ICP