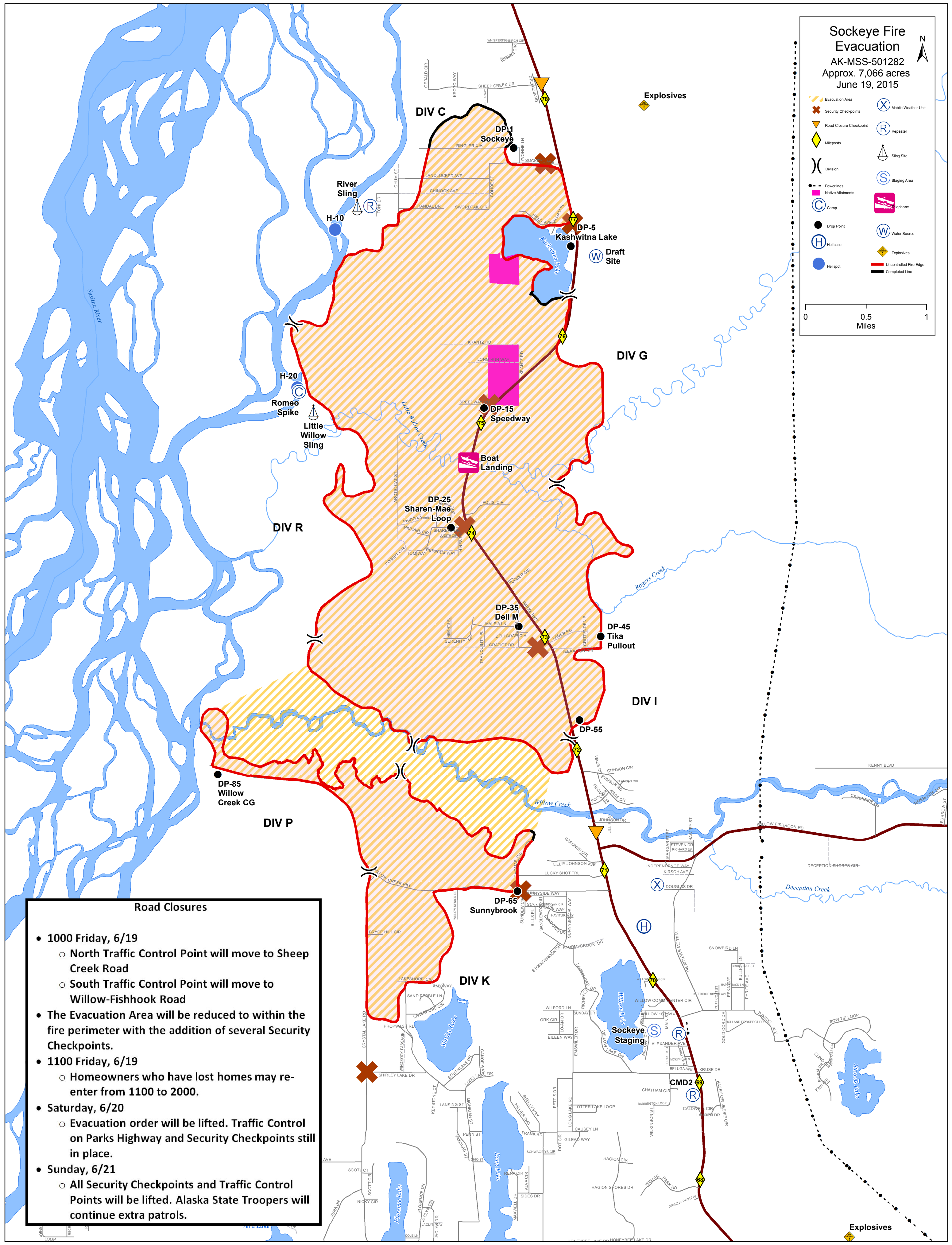
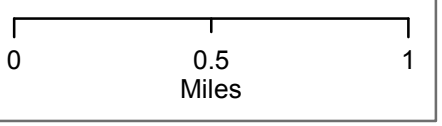


Sockeye Fire Evacuation
 AK-MSS-501282
 Approx. 7,066 acres
 June 19, 2015

- Evacuation Area
- Security Checkpoints
- Road Closure Checkpoint
- Mileposts
- Division
- Powerlines
- Native Allotments
- Camp
- Drop Point
- Helibase
- Helispot
- Mobile Weather Unit
- Repeater
- Sling Site
- Staging Area
- Telephone
- Water Source
- Explosives
- Uncontrolled Fire Edge
- Completed Line



Road Closures

- **1000 Friday, 6/19**
 - North Traffic Control Point will move to Sheep Creek Road
 - South Traffic Control Point will move to Willow-Fishhook Road
- **The Evacuation Area will be reduced to within the fire perimeter with the addition of several Security Checkpoints.**
- **1100 Friday, 6/19**
 - Homeowners who have lost homes may re-enter from 1100 to 2000.
- **Saturday, 6/20**
 - Evacuation order will be lifted. Traffic Control on Parks Highway and Security Checkpoints still in place.
- **Sunday, 6/21**
 - All Security Checkpoints and Traffic Control Points will be lifted. Alaska State Troopers will continue extra patrols.

Explosives