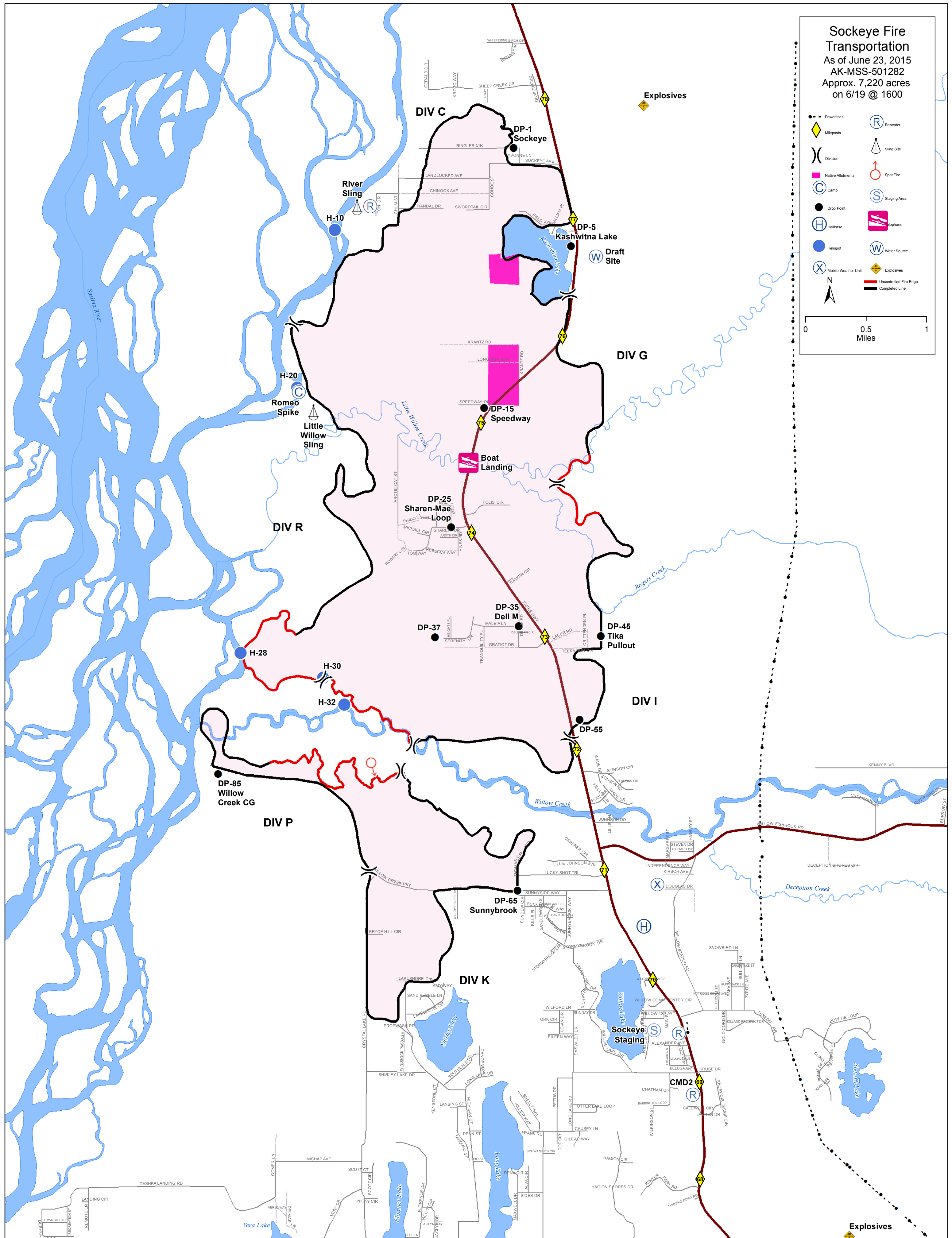


**Sockeye Fire
Transportation**
As of June 23, 2015
AK-MSS-501282
Approx. 7,220 acres
on 6/19 @ 1600

--- Powerlines	(R) Repeater
◆ Mileposts	⚓ Sling Site
() Division	⬆ Spot Fire
■ Native Allotments	(S) Staging Area
(C) Camp	⊙ Helibase
● Drop Point	☎ Heliphone
(H) Helibase	(W) Water Source
● Helispot	⚡ Explosives
(X) Mobile Weather Unit	— Uncontrolled Fire Edge
⬆ Spot Fire	— Completed Line

N

0 0.5 1
Miles



Explosives