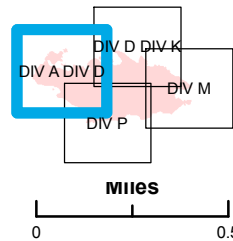


CARD STREET AK-KIDC-503292 IAP Map

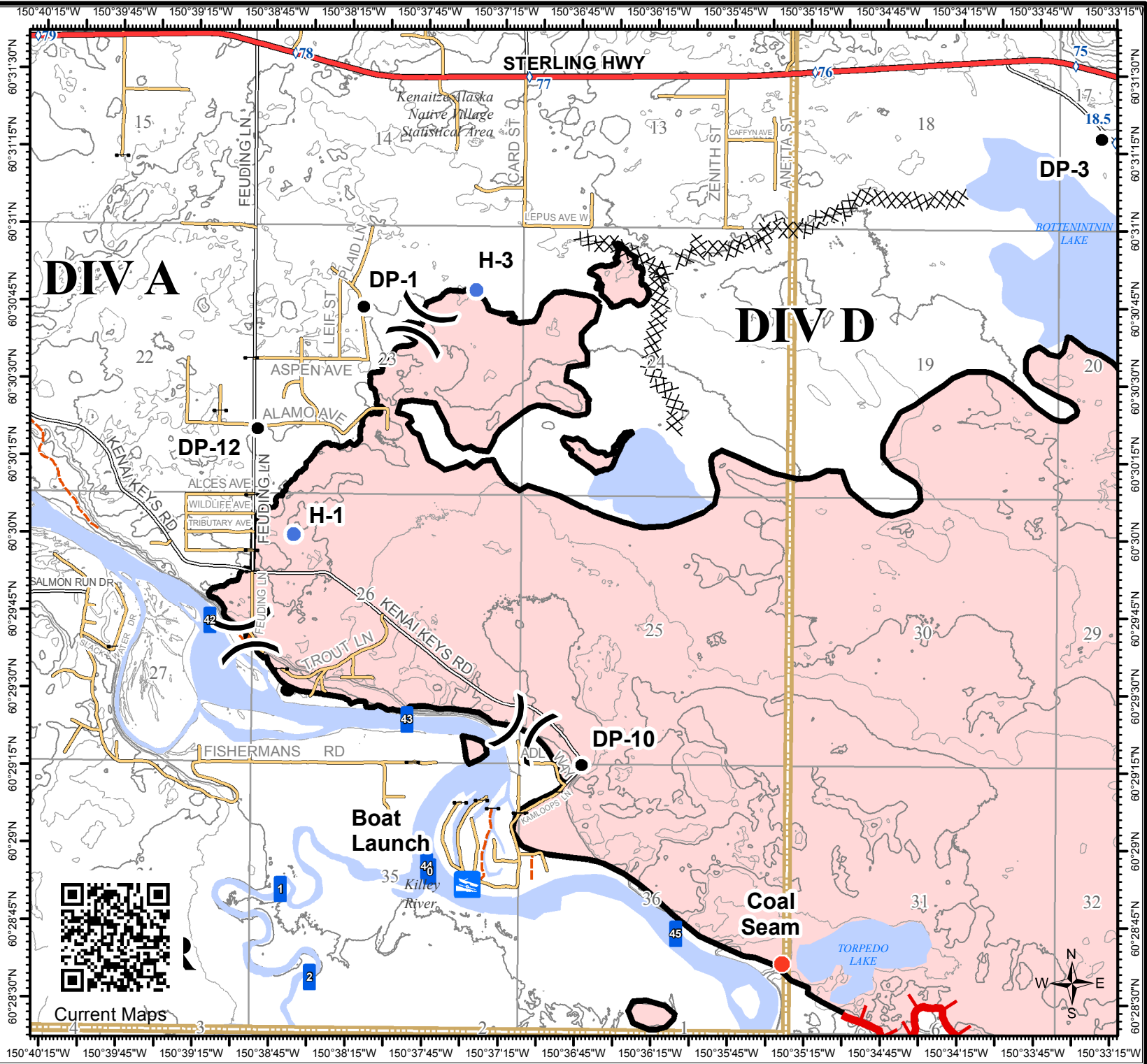
GCS NAD 1983
06/27/2015
Day Shift
Approx: 8,876 ac

- () Division
- Drop Point
- Hot Spot
- Helispot
- Boat Launch
- Possible Road Barrier
- Uncontrolled Fire Edge
- Completed Dozer Line
- Completed Line
- Highway
- Primary Road
- Secondary Road
- Private Road
- Kenai National Wildlife Refuge Boundary
- Contours 10-foot



DIV A

DIV D



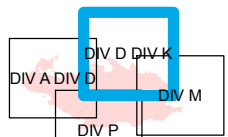
Current Maps

S. Bushnell
06 26 15
1839 Hours

CARD STREET AK-KIDC-503292 IAP Map

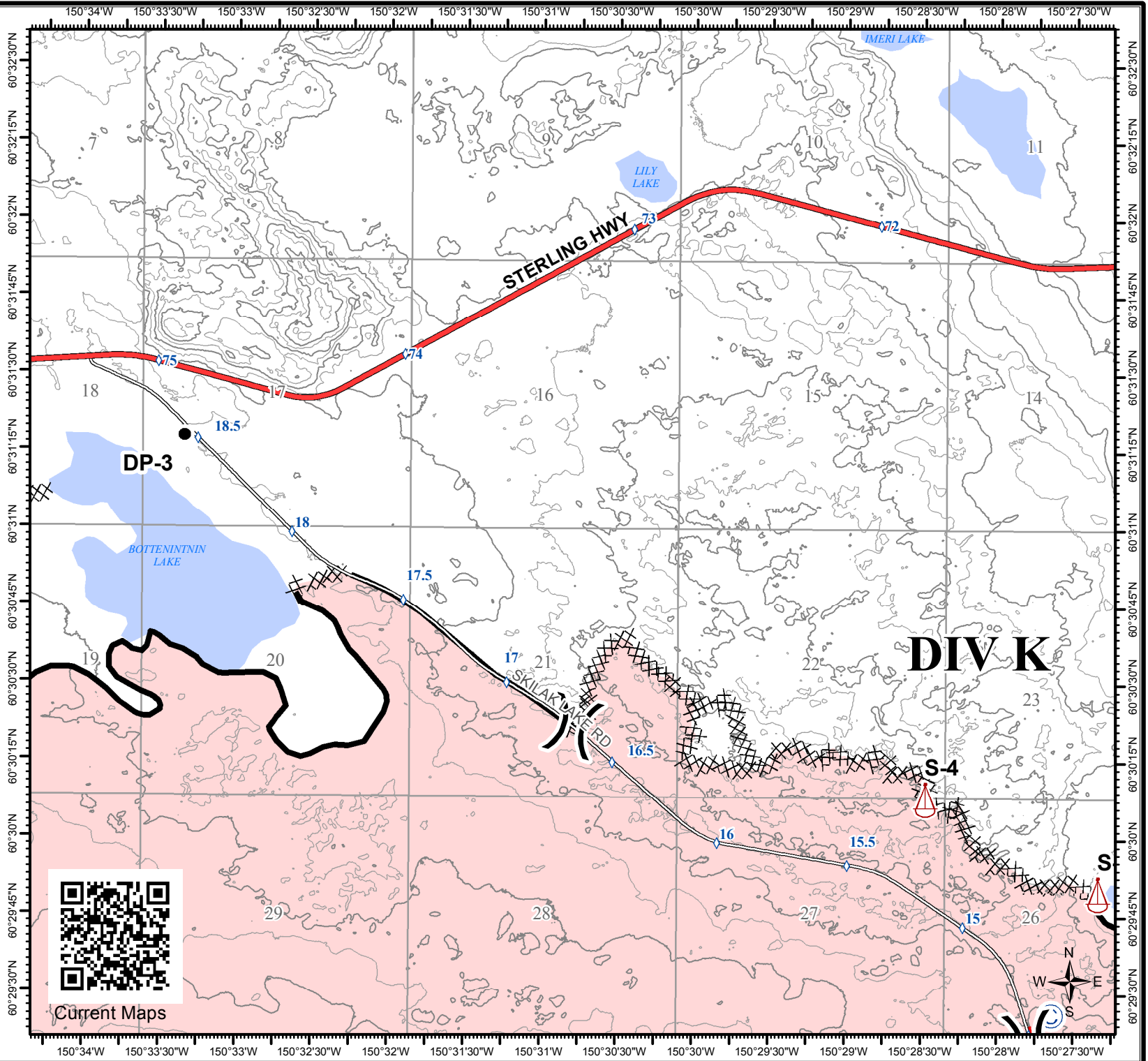
GCS NAD 1983
06/27/2015
Day Shift
Approx: 8,876 ac

- () Division
- Drop Point
- ⊙ Hotshot Camps
- ⚓ Sling Site
- XXXXX Completed Dozer Line
- Completed Line
- Highway
- Primary Road
- ▭ Kenai National Wildlife Refuge Boundary
- Contours 10-foot



0 0.5
MILES

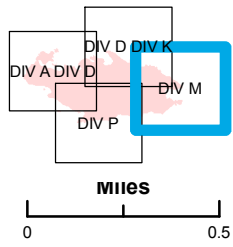
S. Bushnell
06 26 15
1840 Hours



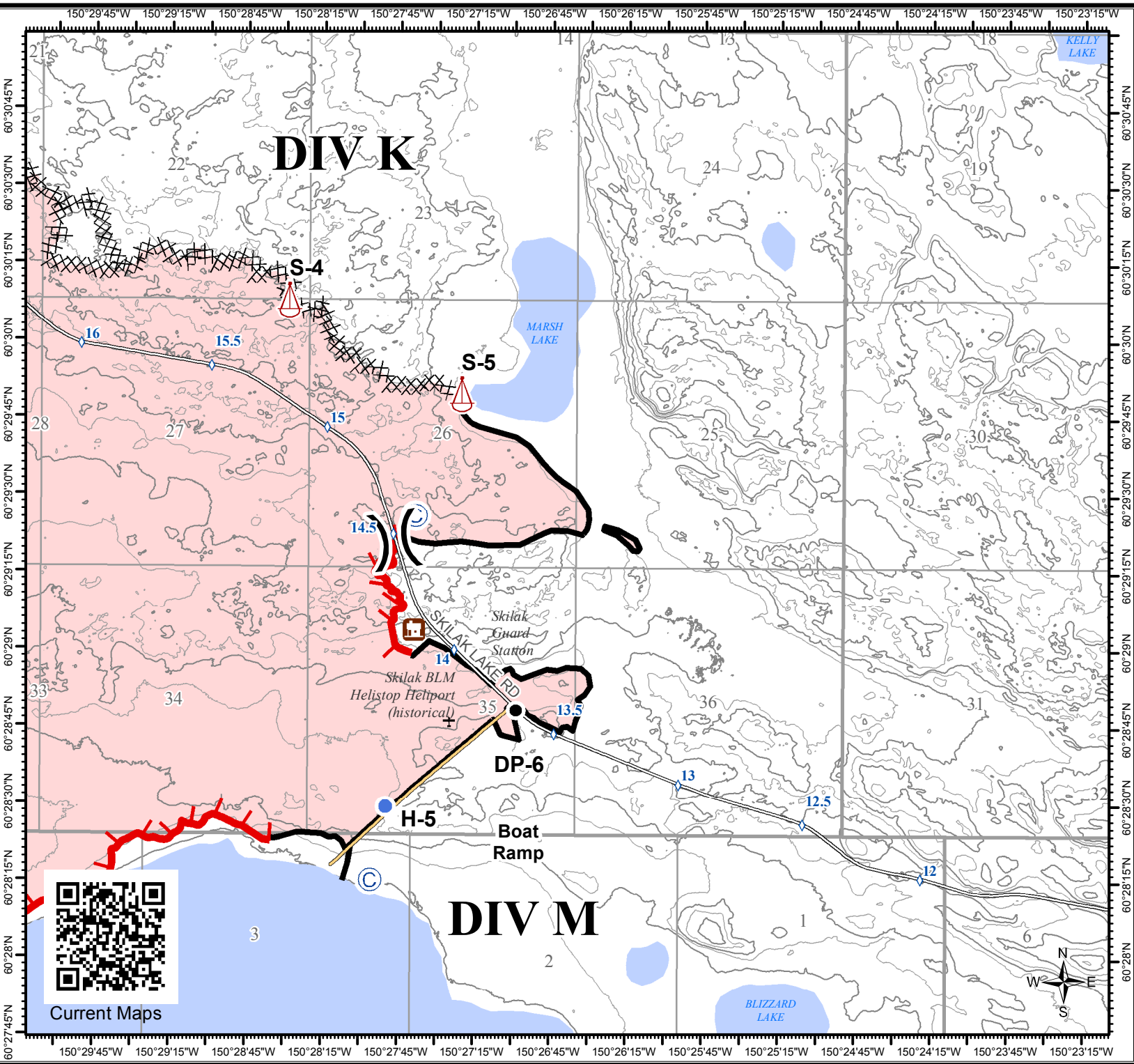
**CARD STREET
AK-KIDC-503292
IAP Map**

GCS NAD 1983
06/27/2015
Day Shift
Approx: 8,876 ac

- Division
- Drop Point
- Hotshot Camps
- Helispot
- Sling Site
- Uncontrolled Fire Edge
- Completed Dozer Line
- Completed Line
- Primary Road
- Secondary Road
- Kenai National Wildlife Refuge Boundary
- Contours 10-foot



S. Bushnell
06 26 15
1841 Hours



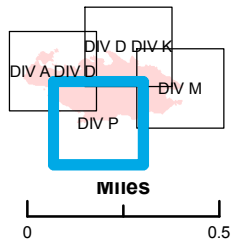
Current Maps



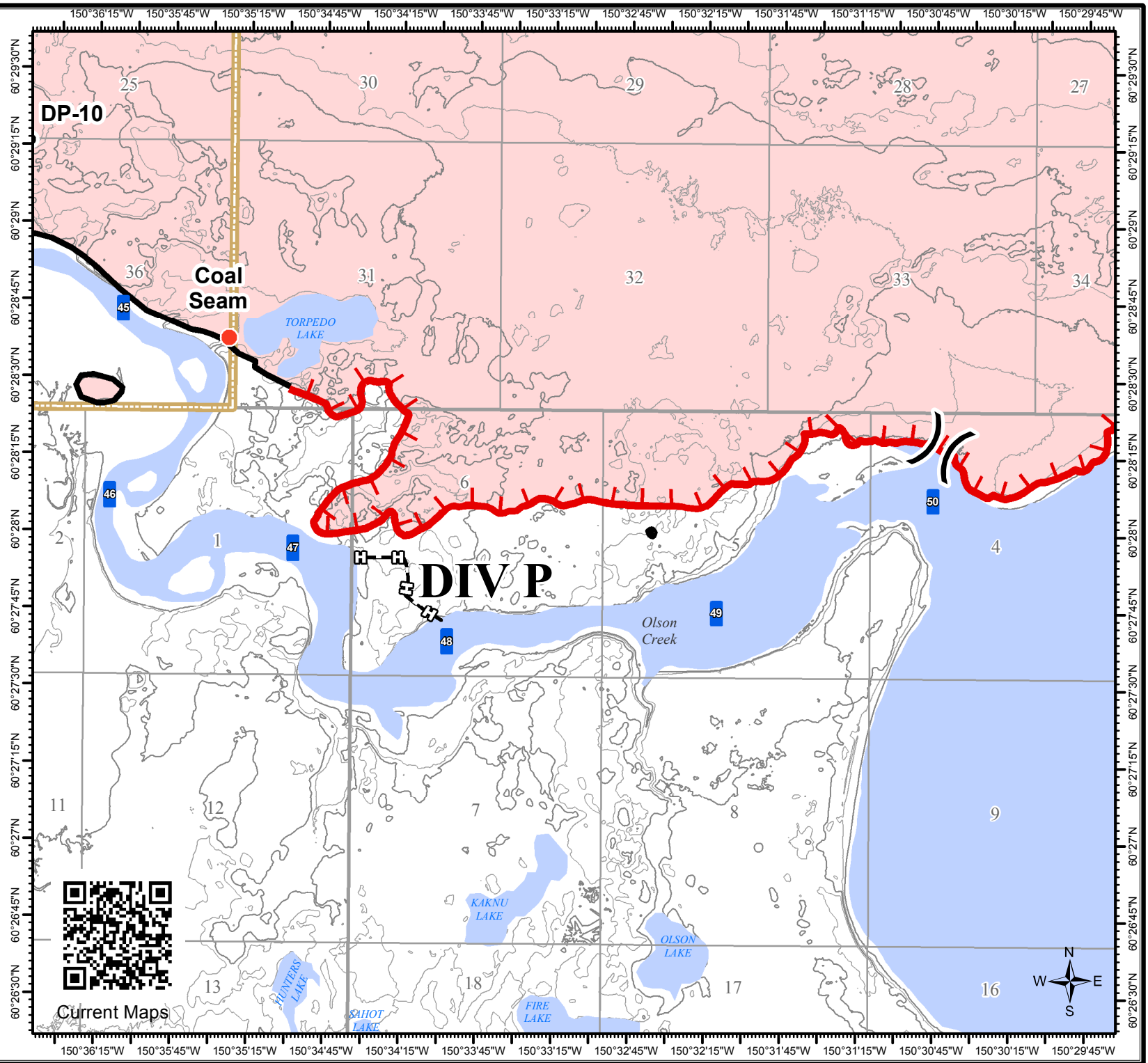
**CARD STREET
AK-KIDC-503292
IAP Map**

GCS NAD 1983
06/27/2015
Day Shift
Approx: 8,876 ac

- Division
- Drop Point
- Hot Spot
- Uncontrolled Fire Edge
- Completed Line
- Hand Line
- Kenai National Wildlife Refuge Boundary
- Contours 10-foot



S. Bushnell
06 26 15
1841 Hours



Current Maps