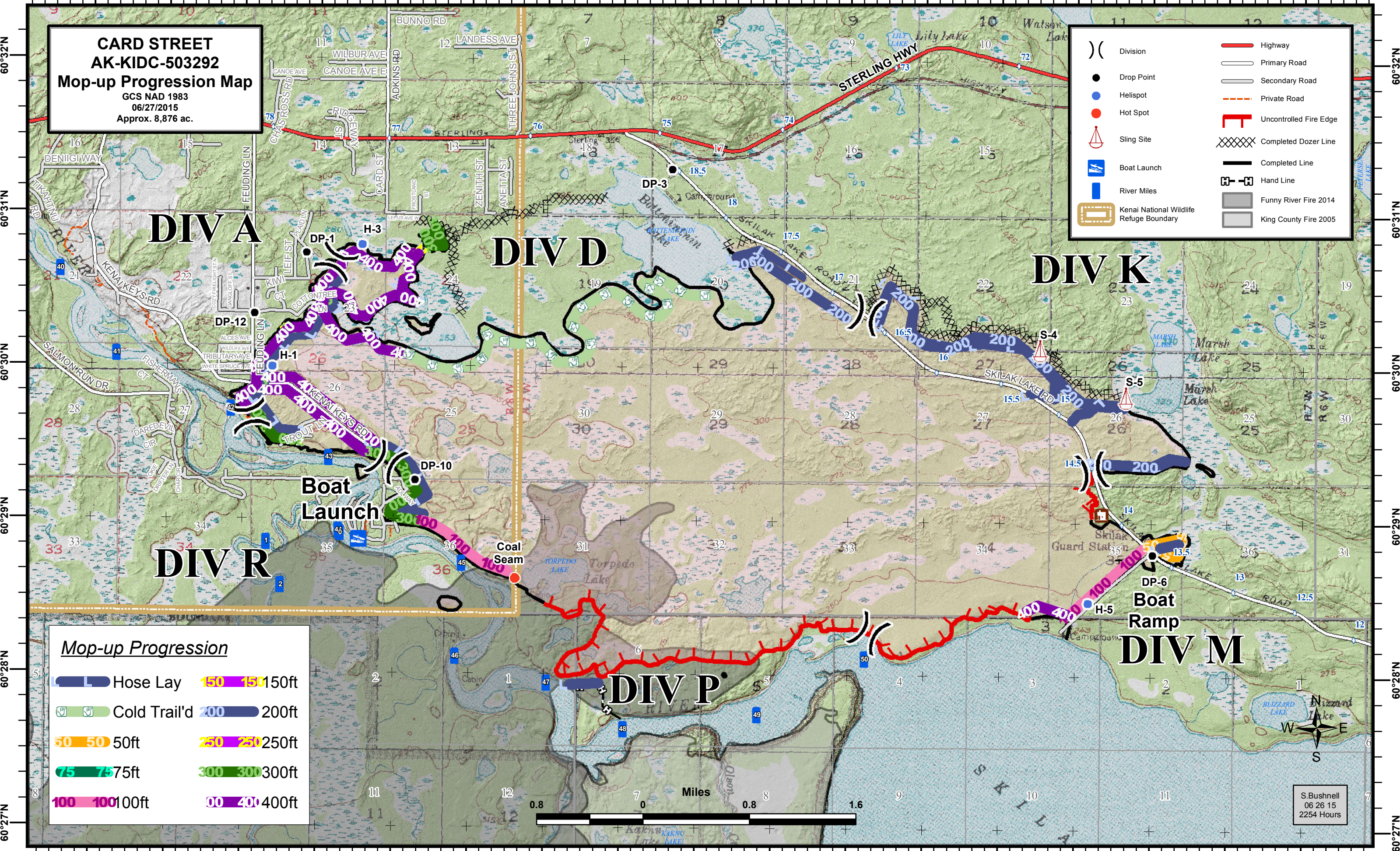


150°41'W 150°40'W 150°39'W 150°38'W 150°37'W 150°36'W 150°35'W 150°34'W 150°33'W 150°32'W 150°31'W 150°30'W 150°29'W 150°28'W 150°27'W 150°26'W 150°25'W

**CARD STREET  
AK-KIDC-503292  
Mop-up Progression Map**  
GCS NAD 1983  
06/27/2015  
Approx. 8,876 ac.

( )	Division		Highway
●	Drop Point		Primary Road
●	Helispot		Secondary Road
●	Hot Spot		Private Road
	Sling Site		Uncontrolled Fire Edge
	Boat Launch		Completed Dozer Line
	River Miles		Completed Line
	Kenai National Wildlife Refuge Boundary		Hand Line
			Funny River Fire 2014
			King County Fire 2005



**Mop-up Progression**

	Hose Lay		150	150	150ft
	Cold Trail'd		200	200	200ft
			50	50	50ft
			250	250	250ft
			300	300	300ft
			100	100	100ft
			400	400	400ft

S. Bushnell  
06 26 15  
2254 Hours

150°41'W 150°40'W 150°39'W 150°38'W 150°37'W 150°36'W 150°35'W 150°34'W 150°33'W 150°32'W 150°31'W 150°30'W 150°29'W 150°28'W 150°27'W 150°26'W 150°25'W