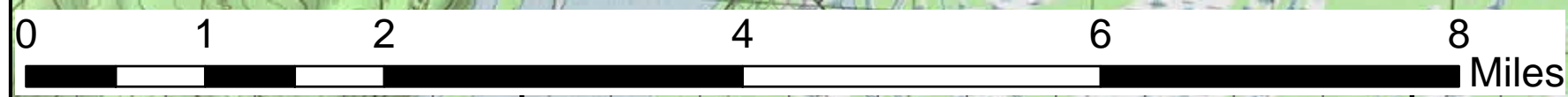
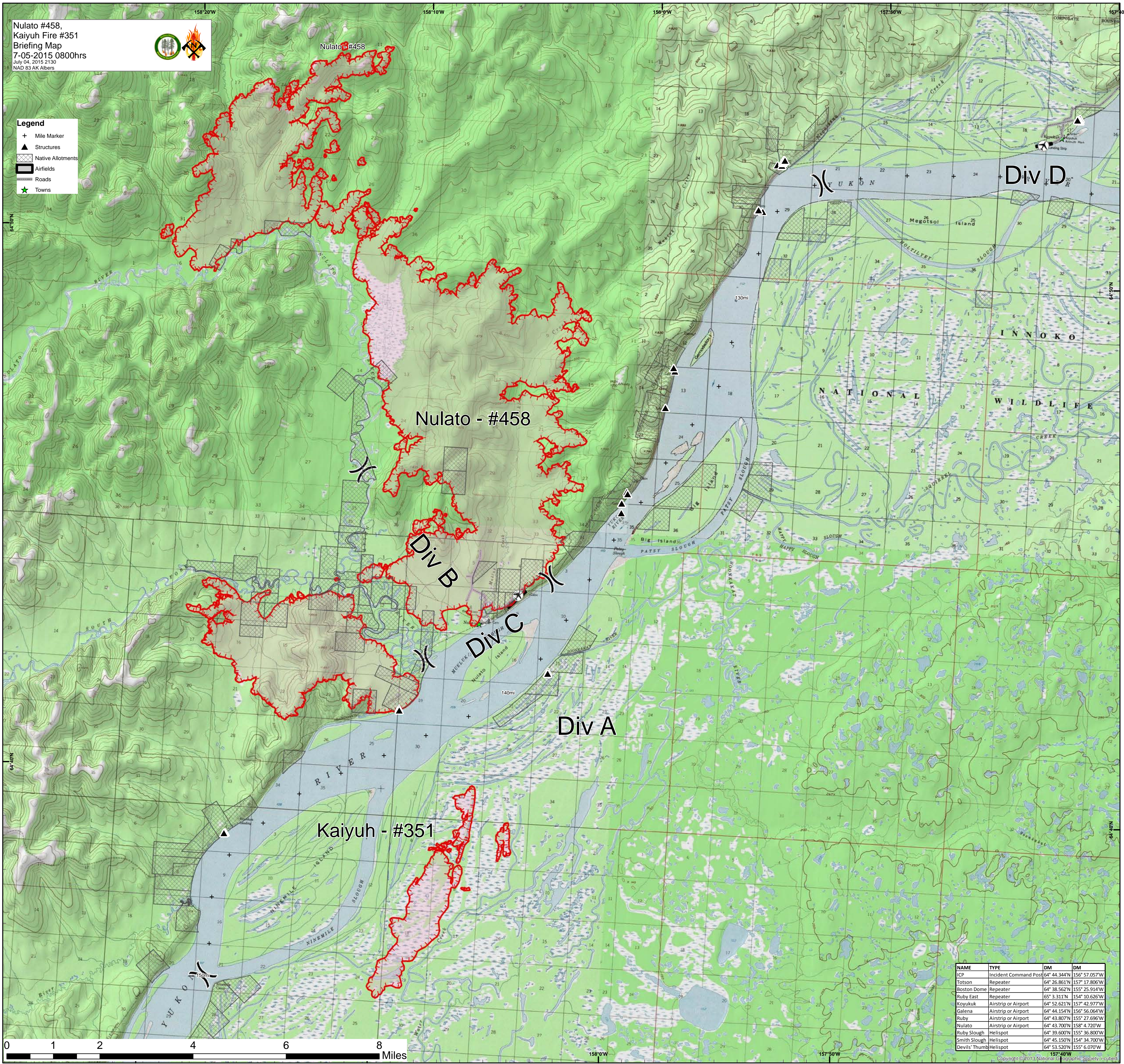


Nulato #458,
 Kaiyuh Fire #351
 Briefing Map
 7-05-2015 0800hrs
 July 04, 2015 2130
 NAD 83 AK Albers



- Legend**
- + Mile Marker
 - ▲ Structures
 - ▨ Native Allotments
 - ▭ Airfields
 - Roads
 - ★ Towns



| NAME | TYPE | DM | DM |
|---------------|-----------------------|--------------|---------------|
| ICP | Incident Command Post | 64° 44.344'N | 156° 57.057'W |
| Totson | Repeater | 64° 26.861'N | 157° 17.806'W |
| Boston Dome | Repeater | 64° 38.562'N | 155° 25.914'W |
| Ruby East | Repeater | 65° 3.311'N | 154° 10.626'W |
| Koyukuk | Airstrip or Airport | 64° 52.621'N | 157° 42.977'W |
| Galena | Airstrip or Airport | 64° 44.154'N | 156° 56.064'W |
| Ruby | Airstrip or Airport | 64° 43.807'N | 155° 27.696'W |
| Nulato | Airstrip or Airport | 64° 43.700'N | 158° 4.720'W |
| Ruby Slough | Helispot | 64° 39.600'N | 155° 36.800'W |
| Smith Slough | Helispot | 64° 45.150'N | 154° 34.700'W |
| Devils' Thumb | Helispot | 64° 53.520'N | 155° 6.070'W |