

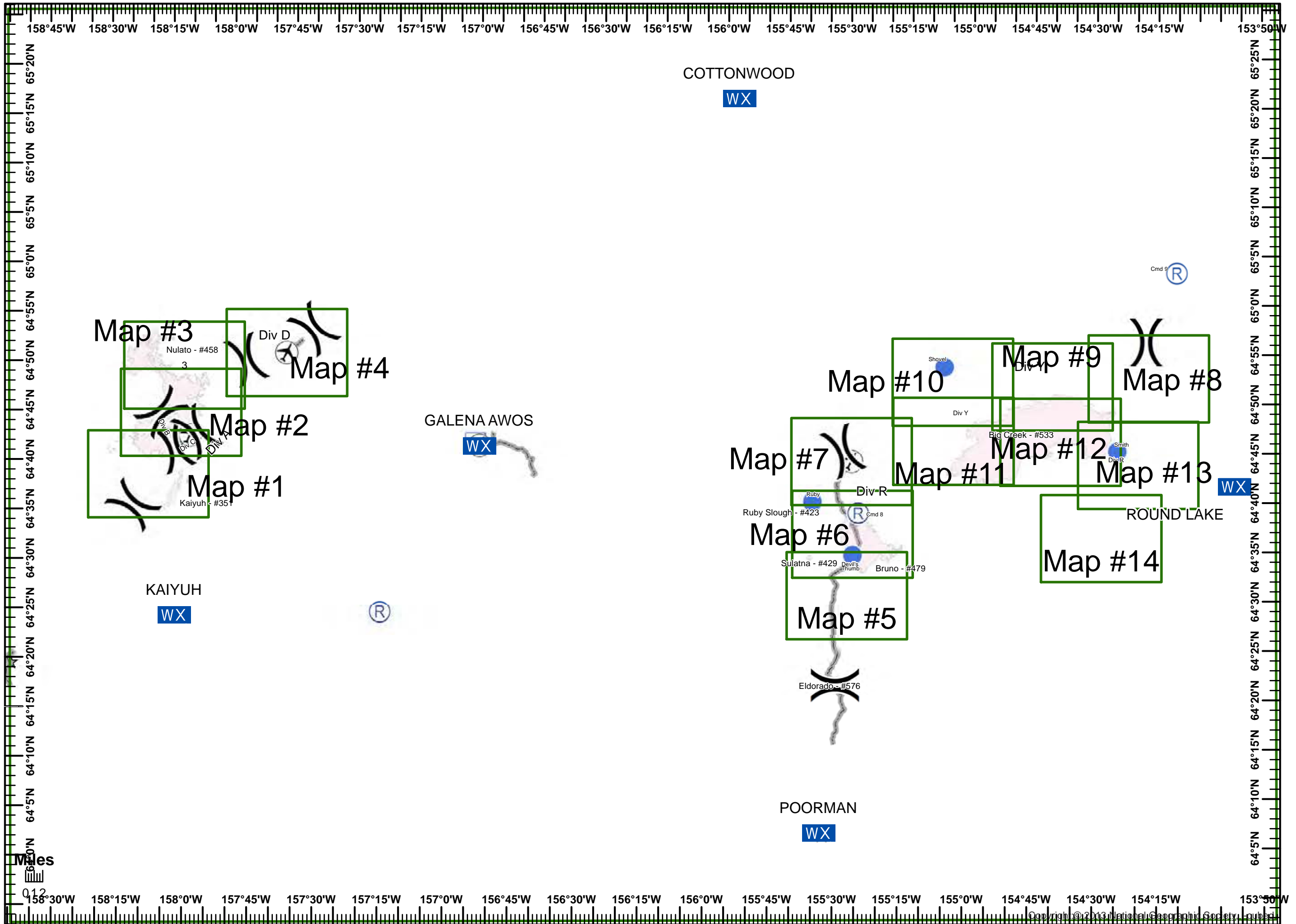
INDEX
7-06-15
NAD 83 AK Albers

Legend

- Division
- Branch
- Drop Point
- Fire Origin
- Spot Fire
- Helispot
- Staging Area
- Water Source
- Helibase
- Incident Command Post
- Camp
- Hot Spot
- Repeater
- Safety Zone
- Fire Station
- Aerial Hazard
- Restricted Water Source
- Pump
- Uncontrolled Fire Edge
- Completed Dozer Line
- Completed Line
- Road as Completed Line
- Completed Line
- Completed Line Break
- IR Detected Intense Heat
- Structure
- Road
- Mile Markers



Hutton IMT
 July 06, 2015
 1304 hrs



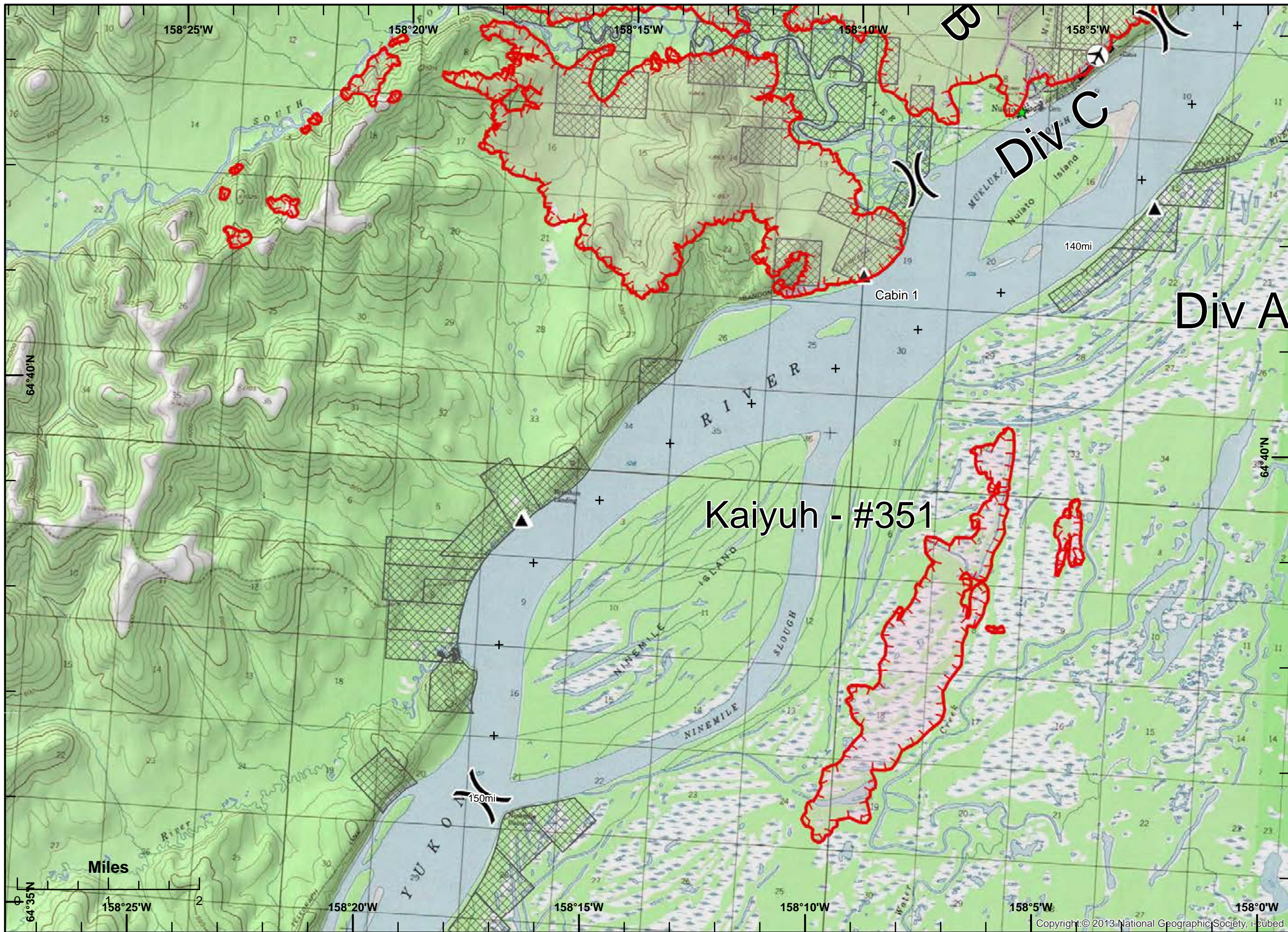
Nulato Fire #458
7-06-15
NAD 83 AK Albers

Legend

- Division
- Branch
- Drop Point
- Fire Origin
- Spot Fire
- Helispot
- Staging Area
- Water Source
- Helibase
- Incident Command Post
- Camp
- Hot Spot
- Repeater
- Safety Zone
- Fire Station
- Aerial Hazard
- Restricted Water Source
- Pump
- Uncontrolled Fire Edge
- Completed Dozer Line
- Completed Line
- Road as Completed Line
- Completed Line
- Completed Line Break
- IR Detected Intense Heat
- Structure
- Road
- Mile Markers



Hutton IMT
 July 06, 2015
 1304 hrs



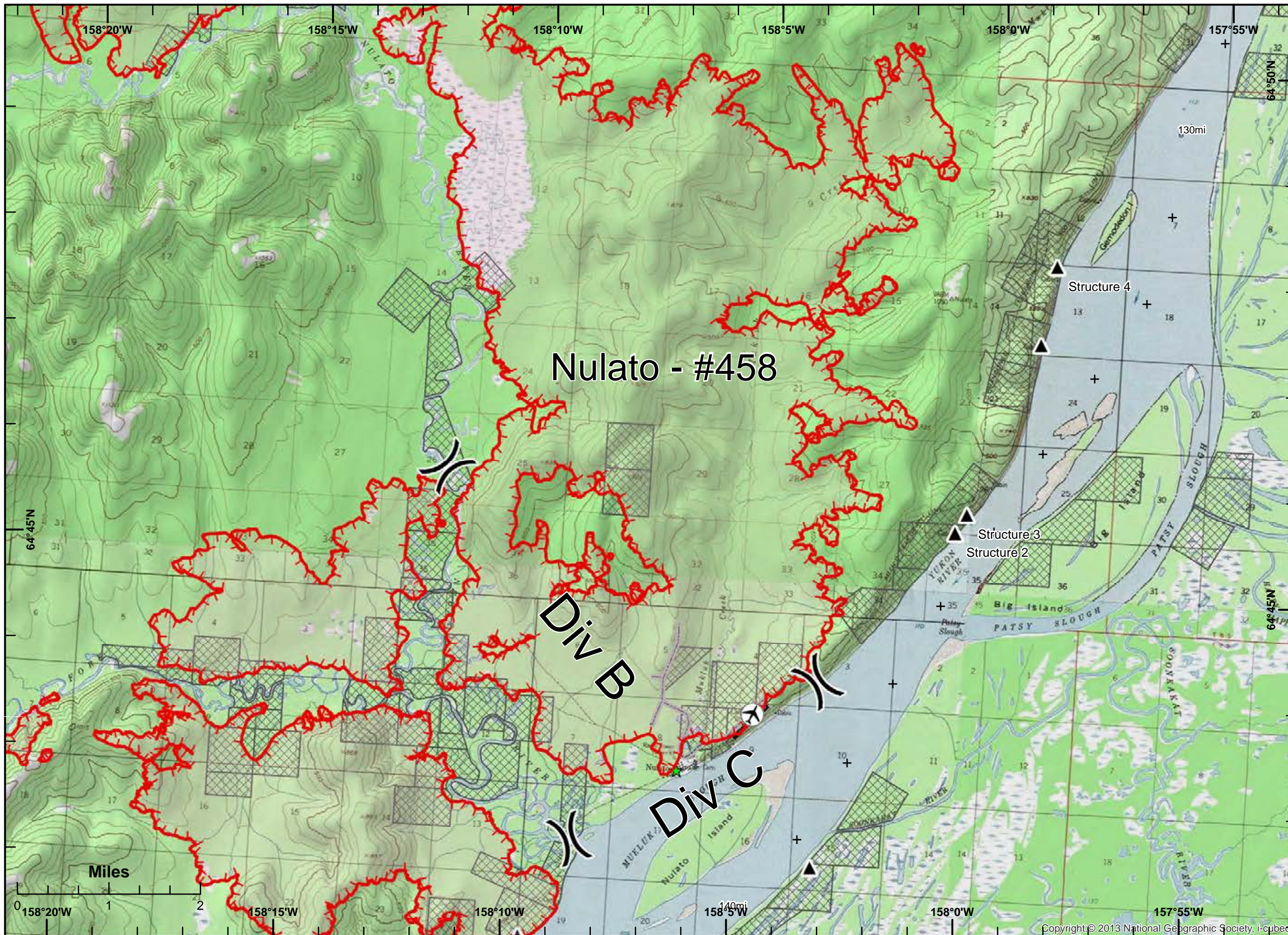
Nulato Fire #458
7-06-15
NAD 83 AK Albers

Legend

- Division
- Branch
- Drop Point
- Fire Origin
- Spot Fire
- Helispot
- Staging Area
- Water Source
- Helibase
- Incident Command Post
- Camp
- Hot Spot
- Repeater
- Safety Zone
- Fire Station
- Aerial Hazard
- Restricted Water Source
- Pump
- Uncontrolled Fire Edge
- Completed Dozer Line
- Completed Line
- Road as Completed Line
- Completed Line
- Completed Line Break
- IR Detected Intense Heat
- Structure
- Road
- Mile Markers



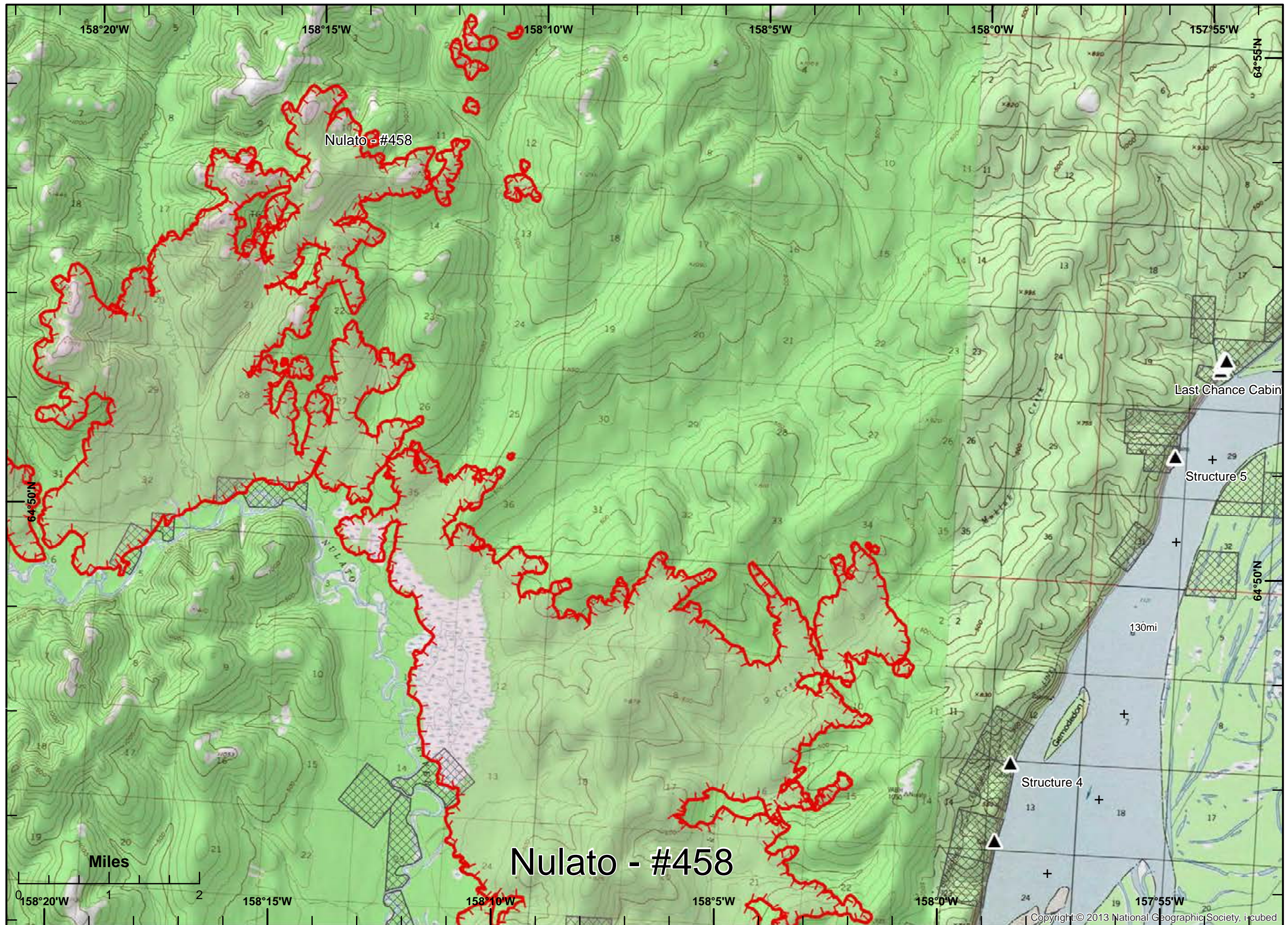
Hutton IMT
 July 06, 2015
 1304 hrs



Nulato Fire #458
7-06-15
NAD 83 AK Albers

Legend

- Division
- Branch
- Drop Point
- Fire Origin
- Spot Fire
- Helispot
- Staging Area
- Water Source
- Helibase
- Incident Command Post
- Camp
- Hot Spot
- Repeater
- Safety Zone
- Fire Station
- Aerial Hazard
- Restricted Water Source
- Pump
- Uncontrolled Fire Edge
- Completed Dozer Line
- Completed Line
- Road as Completed Line
- Completed Line
- Completed Line Break
- IR Detected Intense Heat
- Structure
- Road
- Mile Markers



Hutton IMT
 July 06, 2015
 1305 hrs

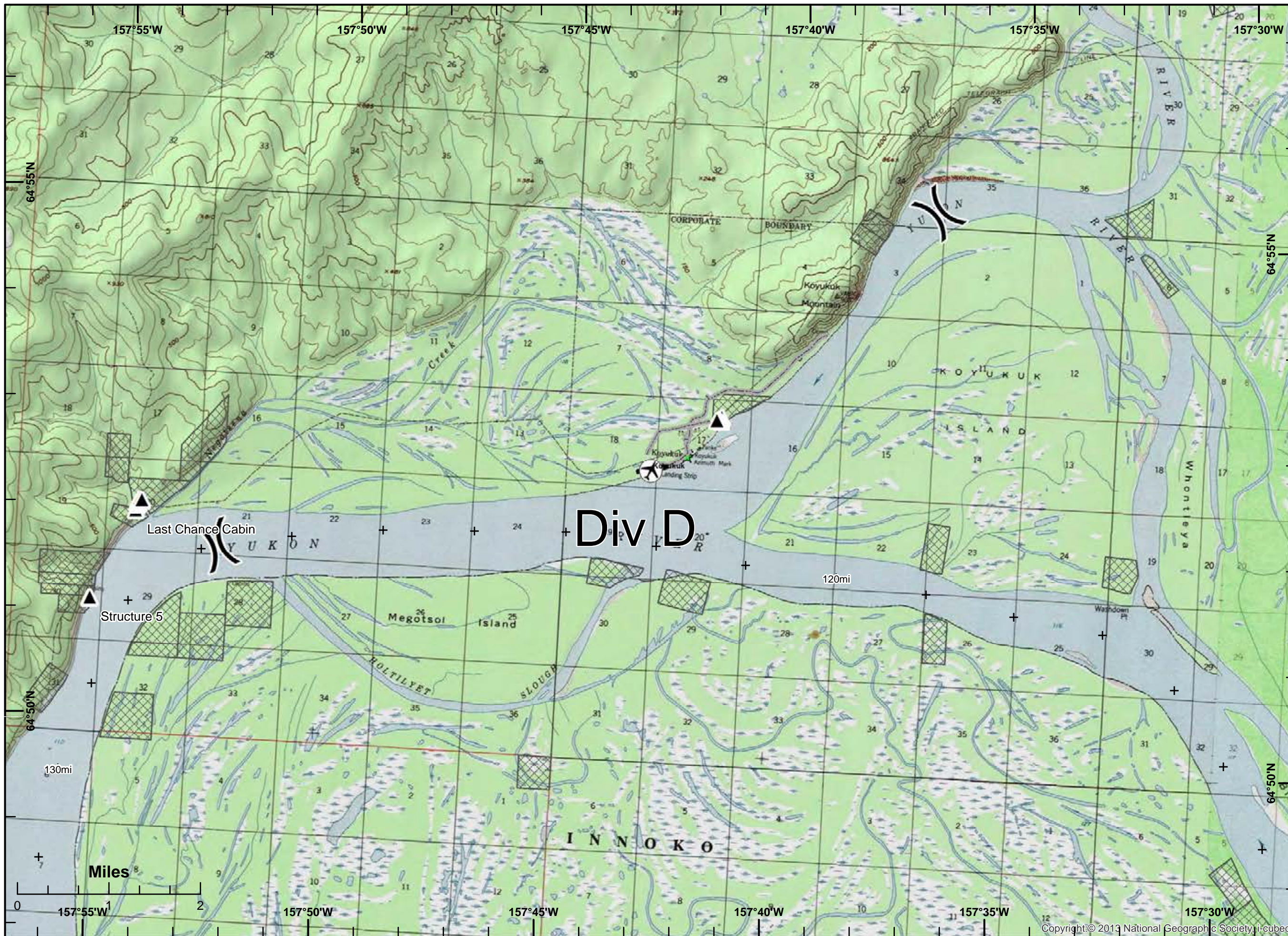
Nulato Fire #458
7-06-15
NAD 83 AK Albers

Legend

- Division
- Branch
- Drop Point
- Fire Origin
- Spot Fire
- Helispot
- Staging Area
- Water Source
- Helibase
- Incident Command Post
- Camp
- Hot Spot
- Repeater
- Safety Zone
- Fire Station
- Aerial Hazard
- Restricted Water Source
- Pump
- Uncontrolled Fire Edge
- Completed Dozer Line
- Completed Line
- Road as Completed Line
- Completed Line
- Completed Line Break
- IR Detected Intense Heat
- Structure
- Road
- Mile Markers



Hutton IMT
 July 06, 2015
 1305 hrs



Bruno Creek Fire #479
7-06-15
NAD 83 AK Albers

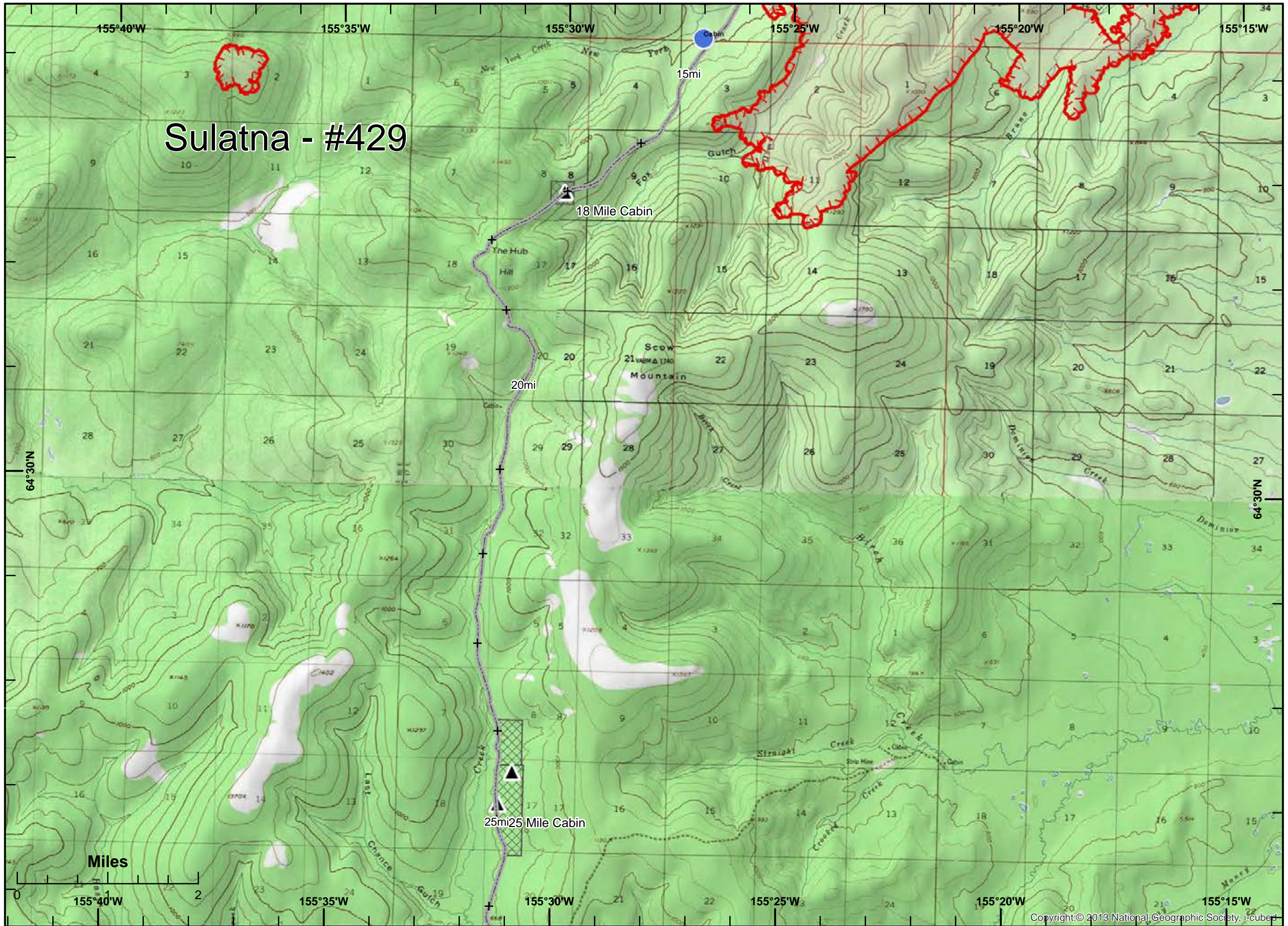
Sulatna - #429

Legend

- Division
- Branch
- Drop Point
- Fire Origin
- Spot Fire
- Helispot
- Staging Area
- Water Source
- Helibase
- Incident Command Post
- Camp
- Hot Spot
- Repeater
- Safety Zone
- Fire Station
- Aerial Hazard
- Restricted Water Source
- Pump
- Uncontrolled Fire Edge
- Completed Dozer Line
- Completed Line
- Road as Completed Line
- Completed Line
- Completed Line Break
- IR Detected Intense Heat
- Structure
- Road
- Mile Markers



Hutton IMT
 July 06, 2015
 1305 hrs



Bruno Creek Fire #479
7-06-15
NAD 83 AK Albers

Ruby Slough - #423

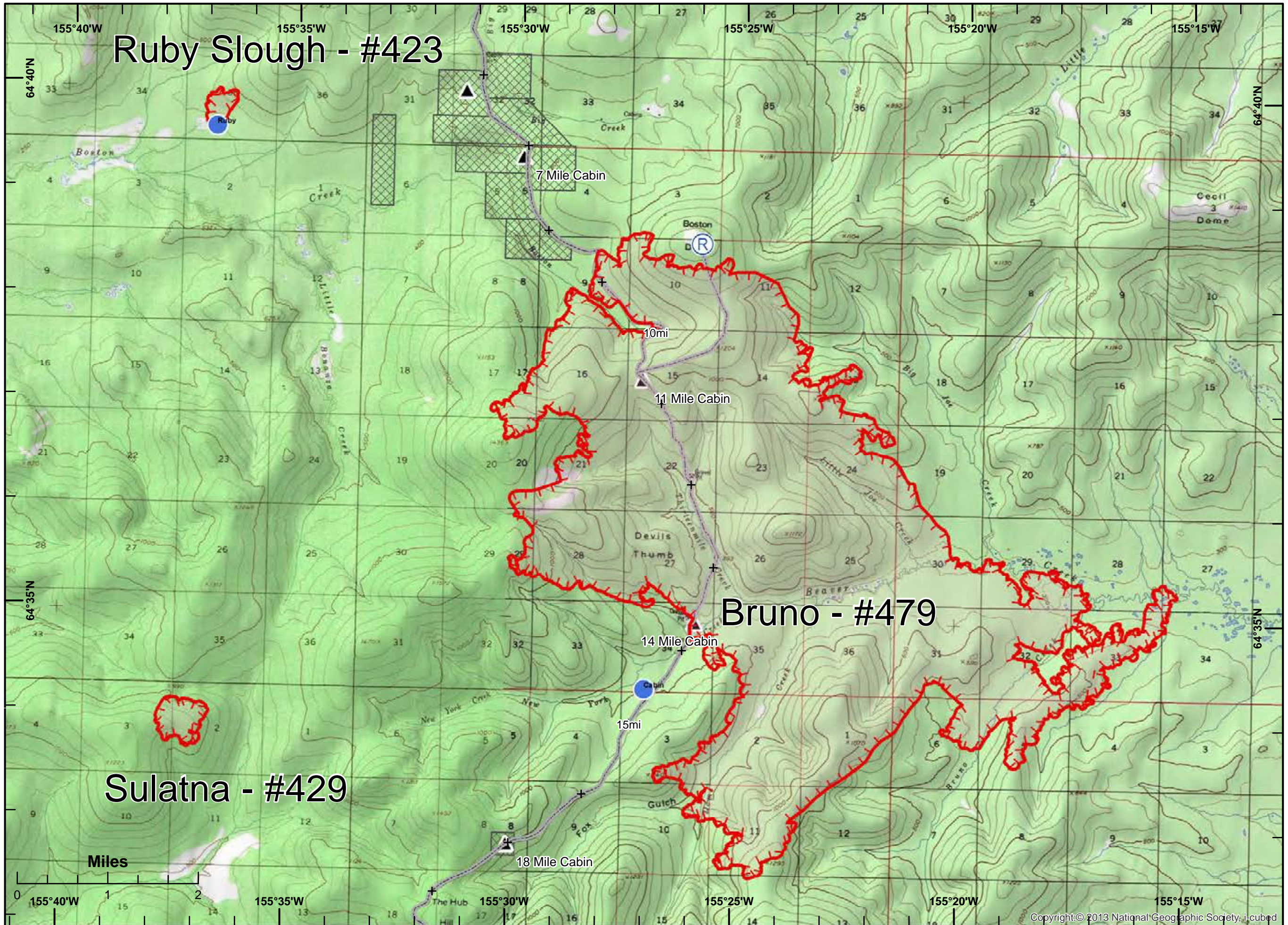
Legend

- Division
- Branch
- Drop Point
- Fire Origin
- Spot Fire
- Helispot
- Staging Area
- Water Source
- Helibase
- Incident Command Post
- Camp
- Hot Spot
- Repeater
- Safety Zone
- Fire Station
- Aerial Hazard
- Restricted Water Source
- Pump
- Uncontrolled Fire Edge
- Completed Dozer Line
- Completed Line
- Road as Completed Line
- Completed Line
- Completed Line Break
- IR Detected Intense Heat
- Structure
- Road
- Mile Markers



Sulatna - #429

Bruno - #479

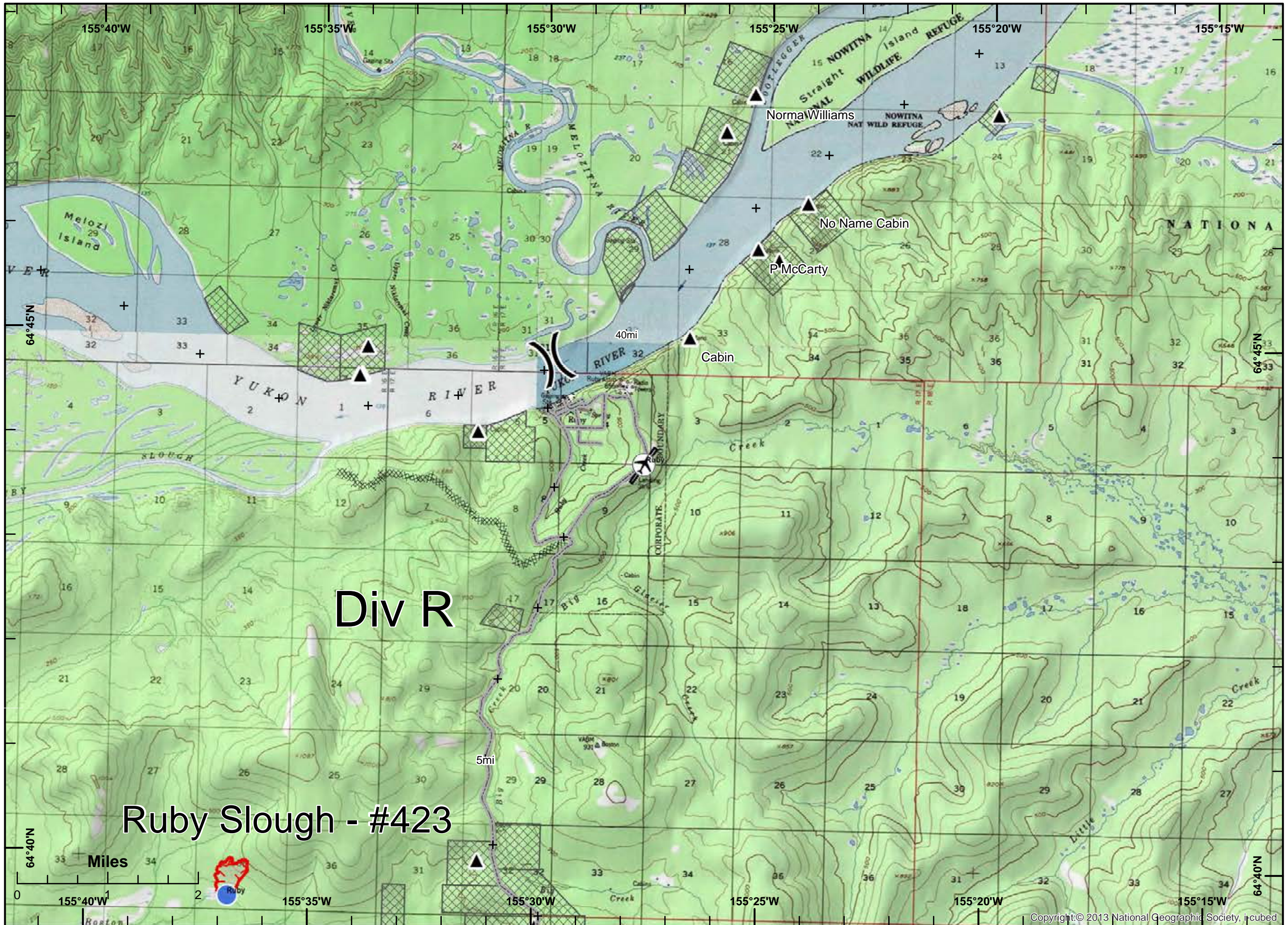


Hutton IMT
 July 06, 2015
 1305 hrs

Bruno Creek Fire #479
7-06-15
NAD 83 AK Albers

Legend

- Division
- Branch
- Drop Point
- Fire Origin
- Spot Fire
- Helispot
- Staging Area
- Water Source
- Helibase
- Incident Command Post
- Camp
- Hot Spot
- Repeater
- Safety Zone
- Fire Station
- Aerial Hazard
- Restricted Water Source
- Pump
- Uncontrolled Fire Edge
- Completed Dozer Line
- Completed Line
- Road as Completed Line
- Completed Line
- Completed Line Break
- IR Detected Intense Heat
- Structure
- Road
- Mile Markers



Hutton IMT
 July 06, 2015
 1306 hrs

Big Creek Fire #533
7-06-15
NAD 83 AK Albers

Legend

- Division
- Branch
- Drop Point
- Fire Origin
- Spot Fire
- Helispot
- Staging Area
- Water Source
- Helibase
- Incident Command Post
- Camp
- Hot Spot
- Repeater
- Safety Zone
- Fire Station
- Aerial Hazard
- Restricted Water Source
- Pump
- Uncontrolled Fire Edge
- Completed Dozer Line
- Completed Line
- Road as Completed Line
- Completed Line
- Completed Line Break
- IR Detected Intense Heat
- Structure
- Road
- Mile Markers



Hutton IMT
 July 06, 2015
 1306 hrs



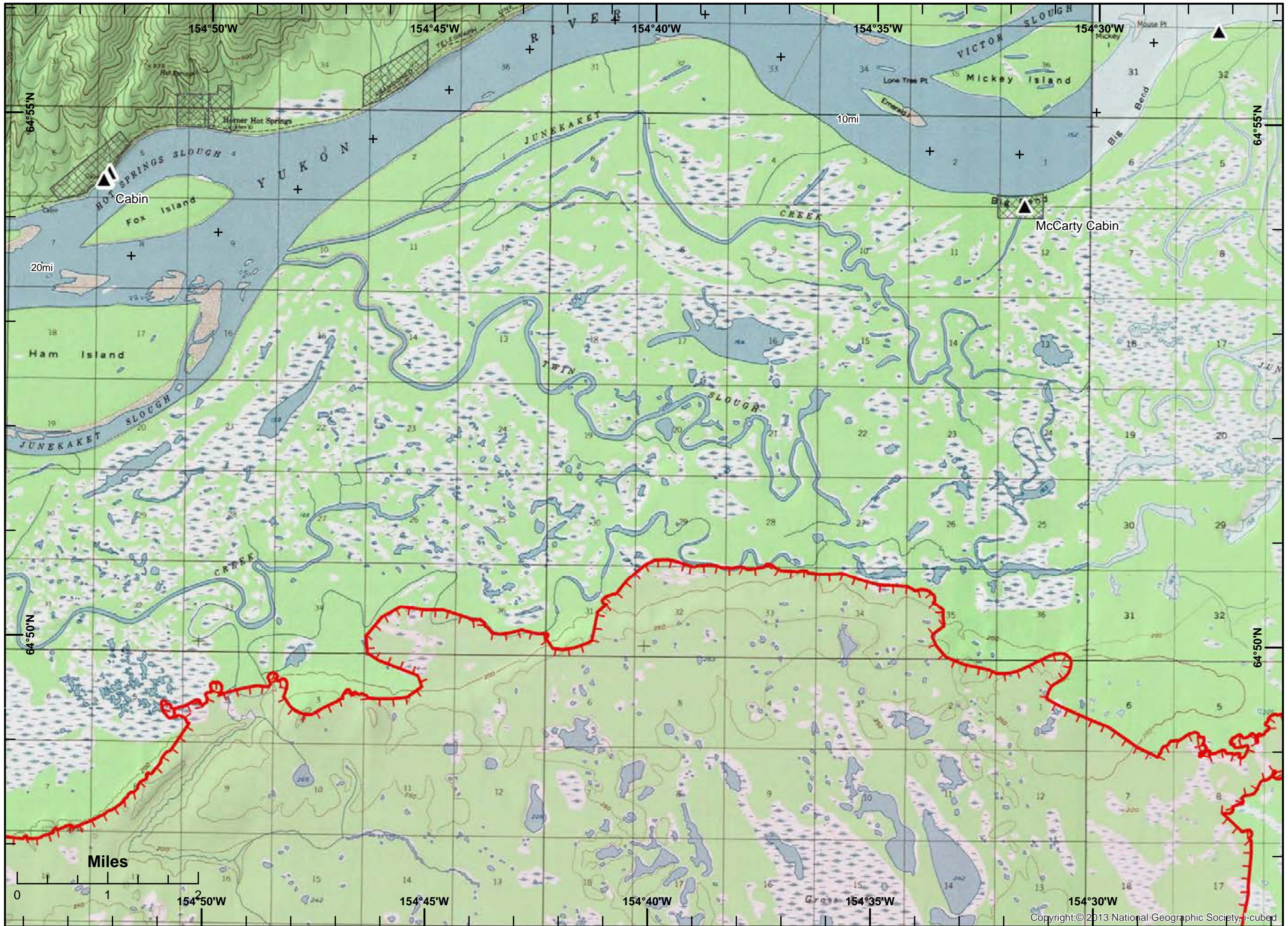
Big Creek Fire #533
7-06-15
NAD 83 AK Albers

Legend

- Division
- Branch
- Drop Point
- Fire Origin
- Spot Fire
- Helispot
- Staging Area
- Water Source
- Helibase
- Incident Command Post
- Camp
- Hot Spot
- Repeater
- Safety Zone
- Fire Station
- Aerial Hazard
- Restricted Water Source
- Pump
- Uncontrolled Fire Edge
- Completed Dozer Line
- Completed Line
- Road as Completed Line
- Completed Line
- Completed Line Break
- IR Detected Intense Heat
- Structure
- Road
- Mile Markers



Hutton IMT
 July 06, 2015
 1306 hrs



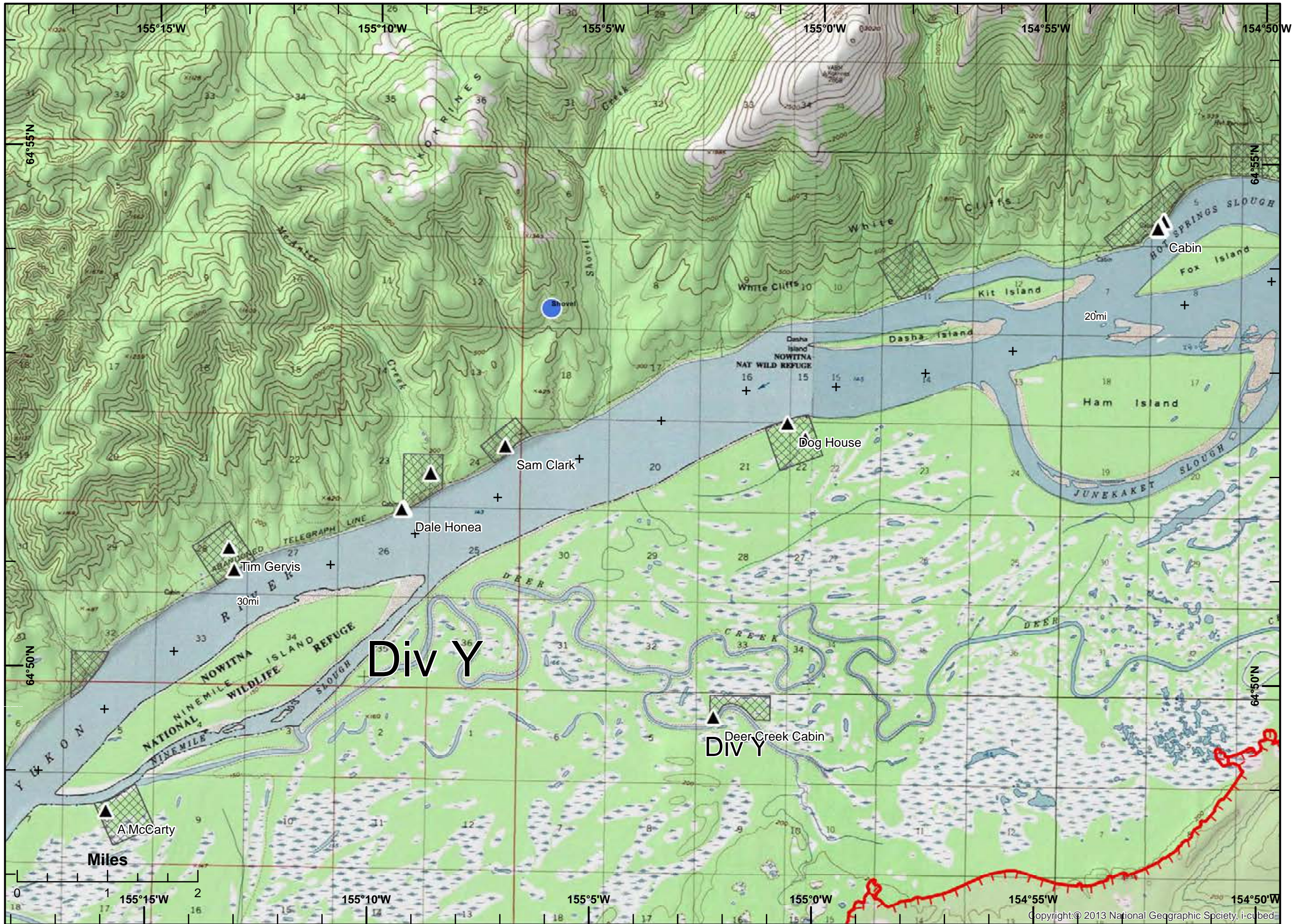
Big Creek Fire #533
7-06-15
NAD 83 AK Albers

Legend

- Division
- Branch
- Drop Point
- Fire Origin
- Spot Fire
- Helispot
- Staging Area
- Water Source
- Helibase
- Incident Command Post
- Camp
- Hot Spot
- Repeater
- Safety Zone
- Fire Station
- Aerial Hazard
- Restricted Water Source
- Pump
- Uncontrolled Fire Edge
- Completed Dozer Line
- Completed Line
- Road as Completed Line
- Completed Line
- Completed Line Break
- IR Detected Intense Heat
- Structure
- Road
- Mile Markers



Hutton IMT
 July 06, 2015
 1306 hrs



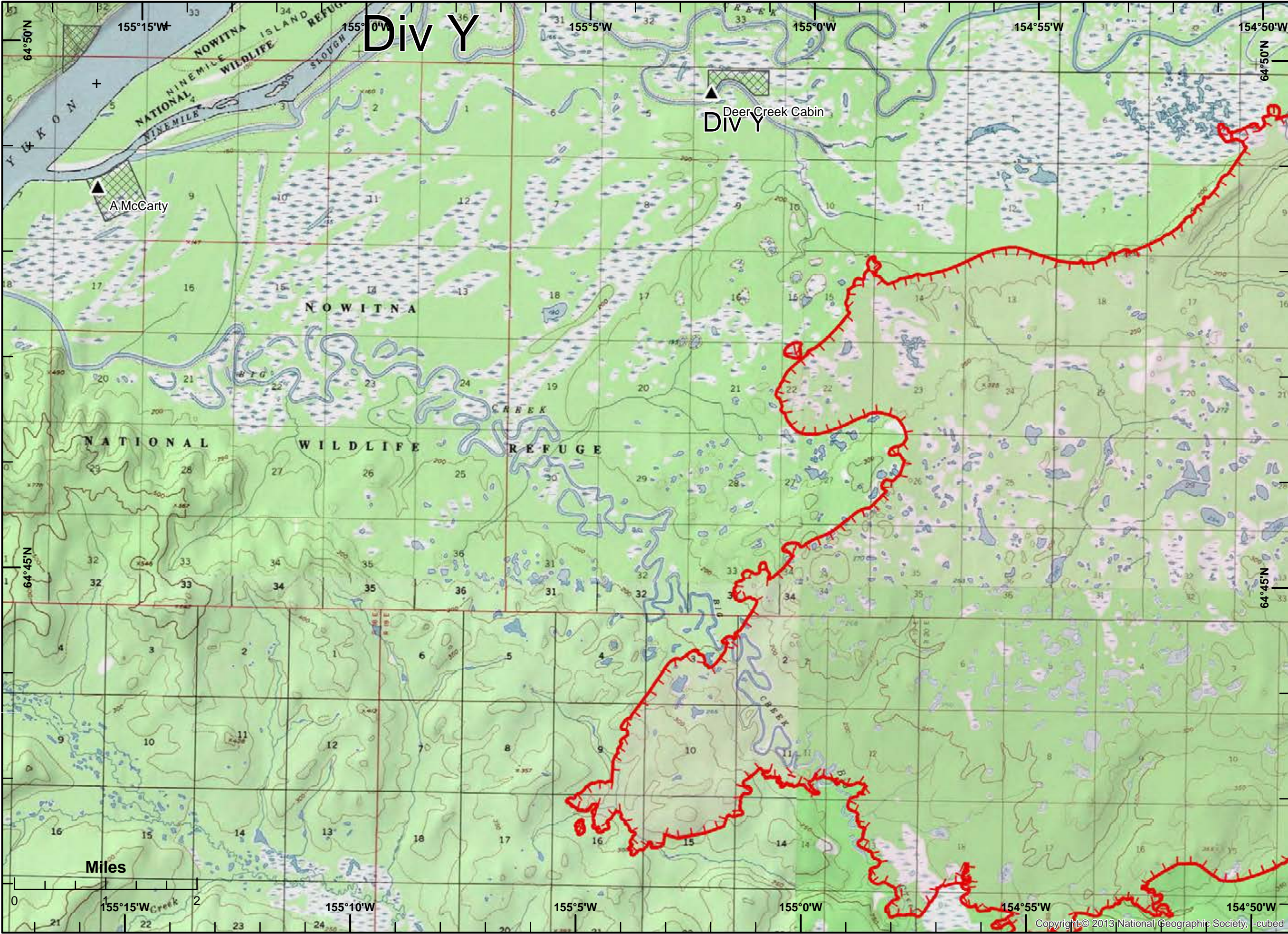
Big Creek Fire #533
7-06-15
NAD 83 AK Albers

Legend

- Division
- Branch
- Drop Point
- Fire Origin
- Spot Fire
- Helispot
- Staging Area
- Water Source
- Helibase
- Incident Command Post
- Camp
- Hot Spot
- Repeater
- Safety Zone
- Fire Station
- Aerial Hazard
- Restricted Water Source
- Pump
- Uncontrolled Fire Edge
- Completed Dozer Line
- Completed Line
- Road as Completed Line
- Completed Line
- Completed Line Break
- IR Detected Intense Heat
- Structure
- Road
- Mile Markers



Hutton IMT
 July 06, 2015
 1307 hrs



Big Creek Fire #533
7-06-15
NAD 83 AK Albers

Legend

- Division
- Branch
- Drop Point
- Fire Origin
- Spot Fire
- Helispot
- Staging Area
- Water Source
- Helibase
- Incident Command Post
- Camp
- Hot Spot
- Repeater
- Safety Zone
- Fire Station
- Aerial Hazard
- Restricted Water Source
- Pump
- Uncontrolled Fire Edge
- Completed Dozer Line
- Completed Line
- Road as Completed Line
- Completed Line
- Completed Line Break
- IR Detected Intense Heat
- Structure
- Road
- Mile Markers



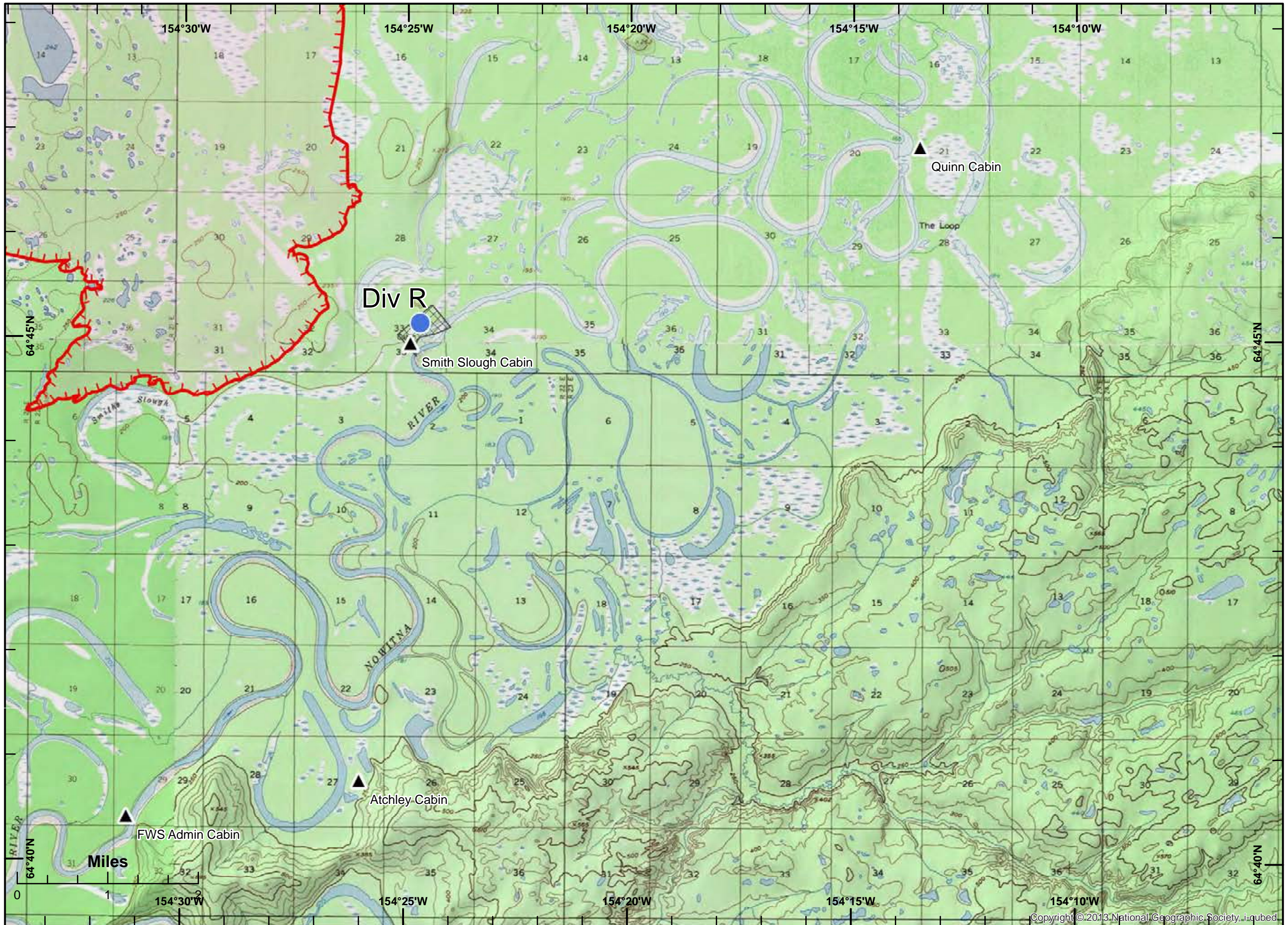
Hutton IMT
 July 06, 2015
 1307 hrs



Big Creek Fire #533
7-06-15
NAD 83 AK Albers

Legend

- Division
- Branch
- Drop Point
- Fire Origin
- Spot Fire
- Helispot
- Staging Area
- Water Source
- Helibase
- Incident Command Post
- Camp
- Hot Spot
- Repeater
- Safety Zone
- Fire Station
- Aerial Hazard
- Restricted Water Source
- Pump
- Uncontrolled Fire Edge
- Completed Dozer Line
- Completed Line
- Road as Completed Line
- Completed Line
- Completed Line Break
- IR Detected Intense Heat
- Structure
- Road
- Mile Markers



Hutton IMT
 July 06, 2015
 1307 hrs

Big Creek Fire #533
7-06-15
NAD 83 AK Albers

Legend

- Division
- Branch
- Drop Point
- Fire Origin
- Spot Fire
- Helispot
- Staging Area
- Water Source
- Helibase
- Incident Command Post
- Camp
- Hot Spot
- Repeater
- Safety Zone
- Fire Station
- Aerial Hazard
- Restricted Water Source
- Pump
- Uncontrolled Fire Edge
- Completed Dozer Line
- Completed Line
- Road as Completed Line
- Completed Line
- Completed Line Break
- IR Detected Intense Heat
- Structure
- Road
- Mile Markers



Hutton IMT
 July 06, 2015
 1308 hrs

