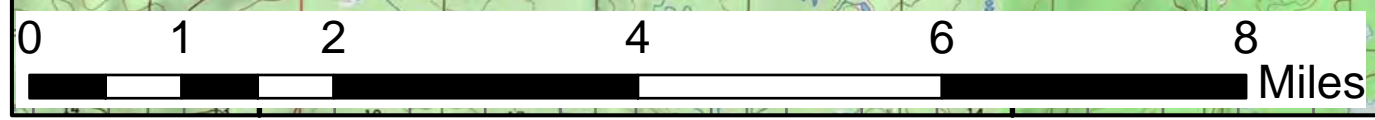
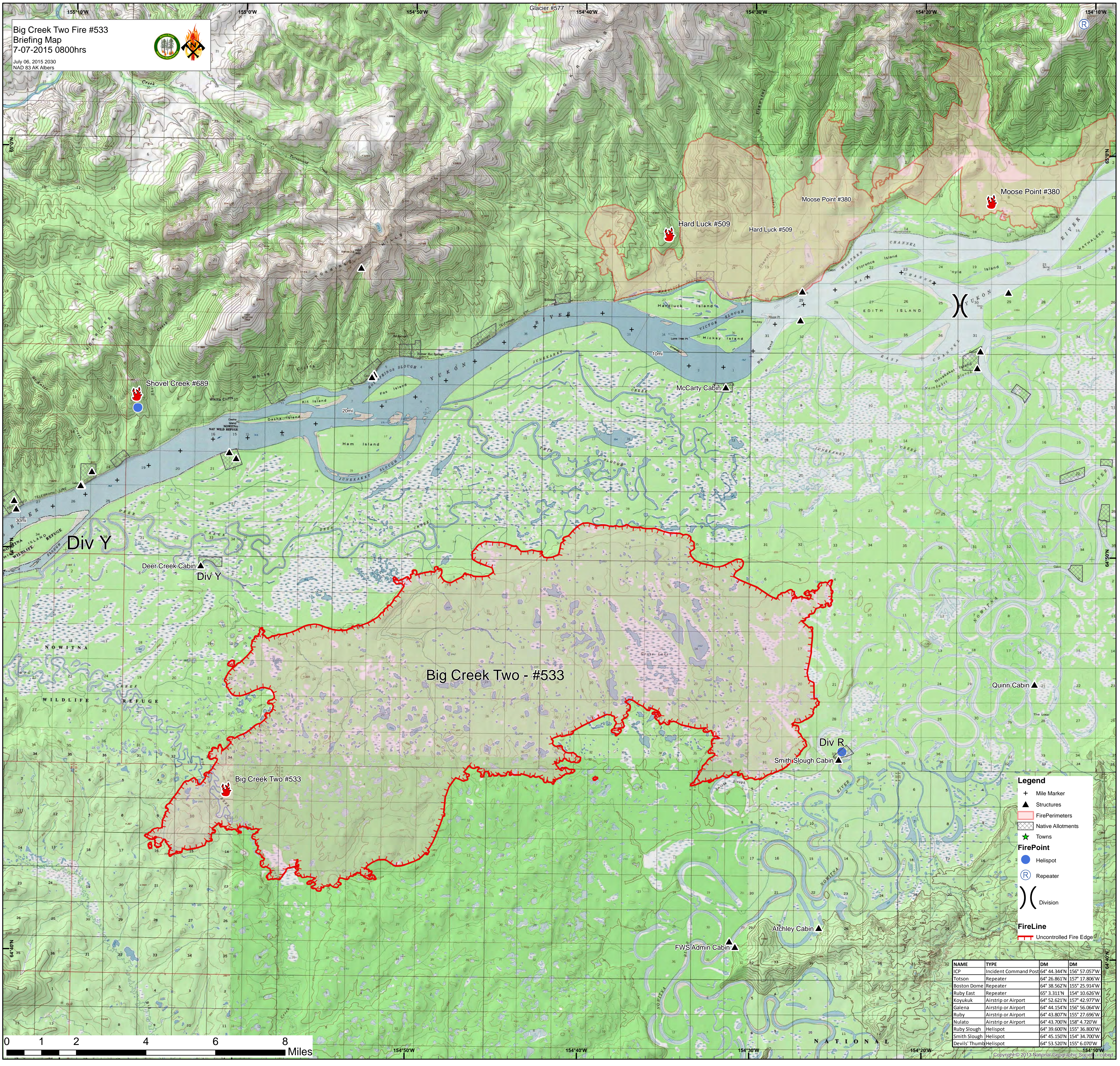


Big Creek Two Fire #533  
 Briefing Map  
 7-07-2015 0800hrs  
 July 06, 2015 2030  
 NAD 83 AK Albers



- Legend**
- + Mile Marker
  - ▲ Structures
  - Fire Perimeters
  - Native Allotments
  - ★ Towns
  - FirePoint**
  - Helispot
  - Ⓡ Repeater
  - )) Division
  - FireLine**
  - Uncontrolled Fire Edge

| NAME          | TYPE                  | DM           | DM            |
|---------------|-----------------------|--------------|---------------|
| ICP           | Incident Command Post | 64° 44.344'N | 156° 57.057'W |
| Totson        | Repeater              | 64° 26.861'N | 157° 17.806'W |
| Boston Dome   | Repeater              | 64° 38.562'N | 155° 25.914'W |
| Ruby East     | Repeater              | 65° 3.311'N  | 154° 10.626'W |
| Koyukuk       | Airstrip or Airport   | 64° 52.621'N | 157° 42.977'W |
| Galena        | Airstrip or Airport   | 64° 44.154'N | 156° 56.064'W |
| Ruby          | Airstrip or Airport   | 64° 43.807'N | 155° 27.696'W |
| Nulato        | Airstrip or Airport   | 64° 43.700'N | 158° 4.720'W  |
| Ruby Slough   | Helispot              | 64° 39.600'N | 155° 36.800'W |
| Smith Slough  | Helispot              | 64° 45.150'N | 154° 34.700'W |
| Devils' Thumb | Helispot              | 64° 53.520'N | 155° 6.070'W  |