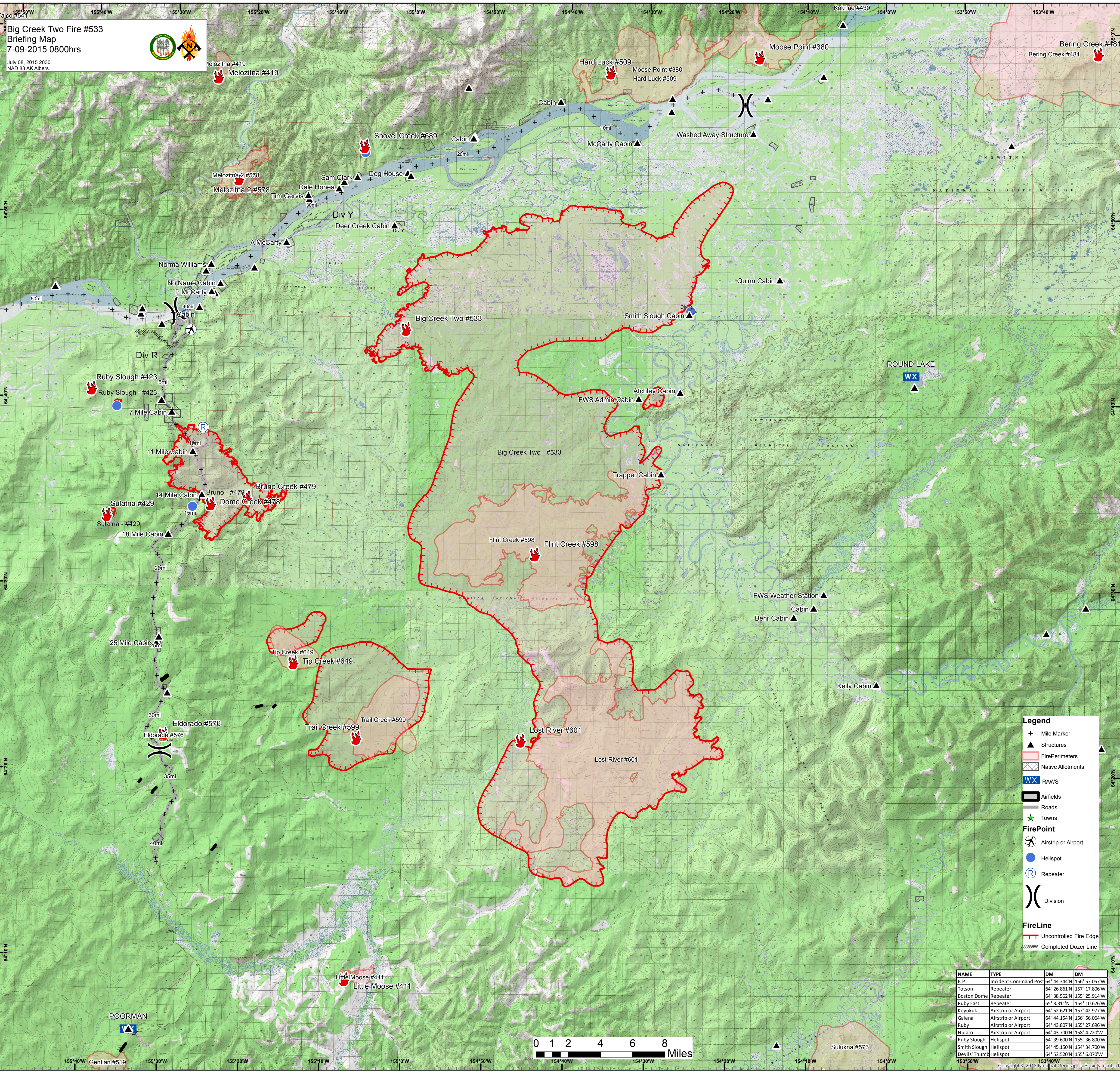


Big Creek Two Fire #533
 Briefing Map
 7-09-2015 0800hrs

July 08, 2015 2030
 NAD 83 AK Albers



Legend

- + Mile Marker
- ▲ Structures
- Fire Perimeters
- Native Allotments
- WX RAWS
- Airfields
- Roads
- Towns
- FirePoint**
- ⊕ Airstrip or Airport
- Helispot
- Ⓡ Repeater
- ⌋ Division
- FireLine**
- Uncontrolled Fire Edge
- Completed Dozer Line

NAME	TYPE	DM	DM
ICP	Incident Command Post	64° 44.344'N	156° 57.057'W
Totson	Repeater	64° 26.861'N	157° 17.806'W
Boston Dome	Repeater	64° 38.562'N	155° 25.914'W
Ruby East	Repeater	65° 3.311'N	154° 10.626'W
Koyukuk	Airstrip or Airport	64° 52.621'N	157° 42.977'W
Galena	Airstrip or Airport	64° 44.154'N	156° 56.064'W
Ruby	Airstrip or Airport	64° 43.807'N	155° 27.696'W
Nulato	Airstrip or Airport	64° 43.700'N	158° 4.720'W
Ruby Slough	Helispot	64° 39.600'N	155° 36.800'W
Smith Slough	Helispot	64° 45.150'N	154° 34.700'W
Devils' Thumb	Helispot	64° 53.520'N	155° 6.070'W

