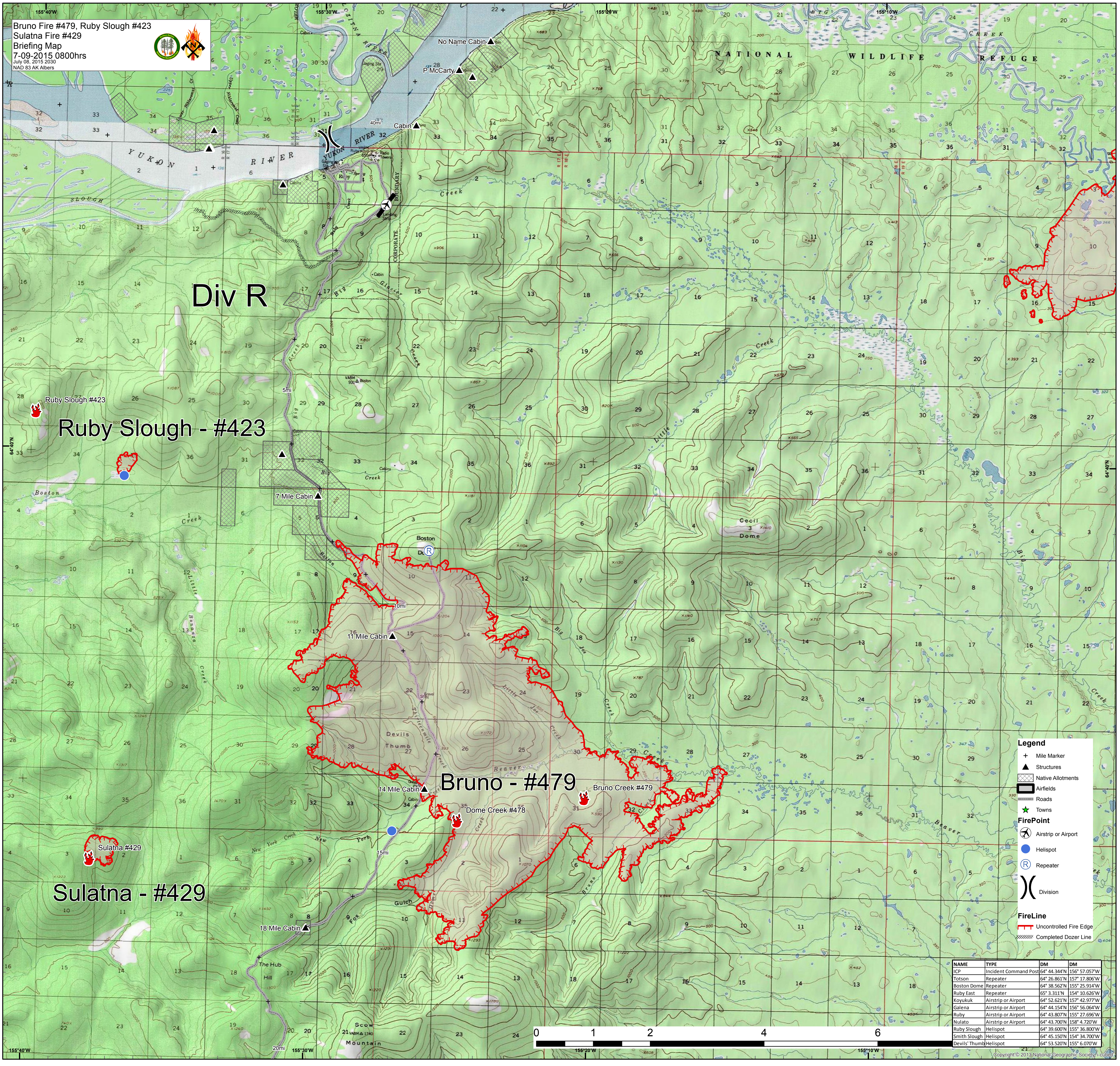


Bruno Fire #479, Ruby Slough #423  
 Sulatna Fire #429  
 Briefing Map  
 7-09-2015 0800hrs  
 July 08, 2015 2030  
 NAD 83 AK Albers



Div R

Ruby Slough - #423

Bruno - #479

Sulatna - #429

**Legend**

- + Mile Marker
- ▲ Structures
- ▨ Native Allotments
- ▭ Airfields
- Roads
- ★ Towns
- FirePoint**
- ✈ Airstrip or Airport
- Helispot
- Ⓡ Repeater
- ⌋ Division
- FireLine**
- Uncontrolled Fire Edge
- ⋯ Completed Dozer Line

| NAME          | TYPE                  | DM           | DM            |
|---------------|-----------------------|--------------|---------------|
| ICP           | Incident Command Post | 64° 44.344'N | 156° 57.057'W |
| Totson        | Repeater              | 64° 26.861'N | 157° 17.806'W |
| Boston Dome   | Repeater              | 64° 38.562'N | 155° 25.914'W |
| Ruby East     | Repeater              | 65° 3.311'N  | 154° 10.626'W |
| Koyukuk       | Airstrip or Airport   | 64° 52.621'N | 157° 42.977'W |
| Galena        | Airstrip or Airport   | 64° 44.154'N | 156° 56.064'W |
| Ruby          | Airstrip or Airport   | 64° 43.807'N | 155° 27.696'W |
| Nulato        | Airstrip or Airport   | 64° 43.700'N | 158° 4.720'W  |
| Ruby Slough   | Helispot              | 64° 39.600'N | 155° 36.800'W |
| Smith Slough  | Helispot              | 64° 45.150'N | 154° 34.700'W |
| Devils' Thumb | Helispot              | 64° 53.520'N | 155° 6.070'W  |

