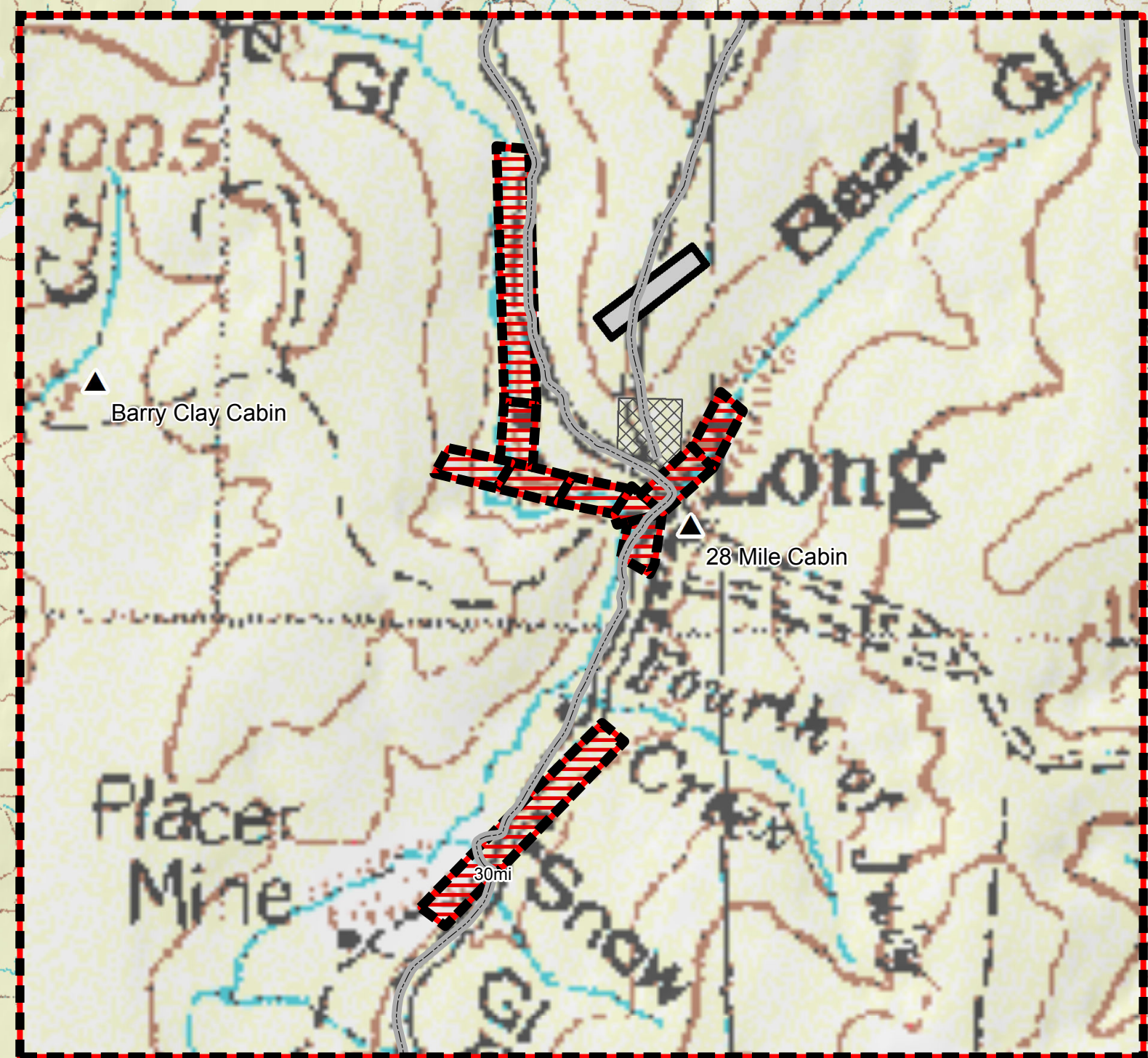
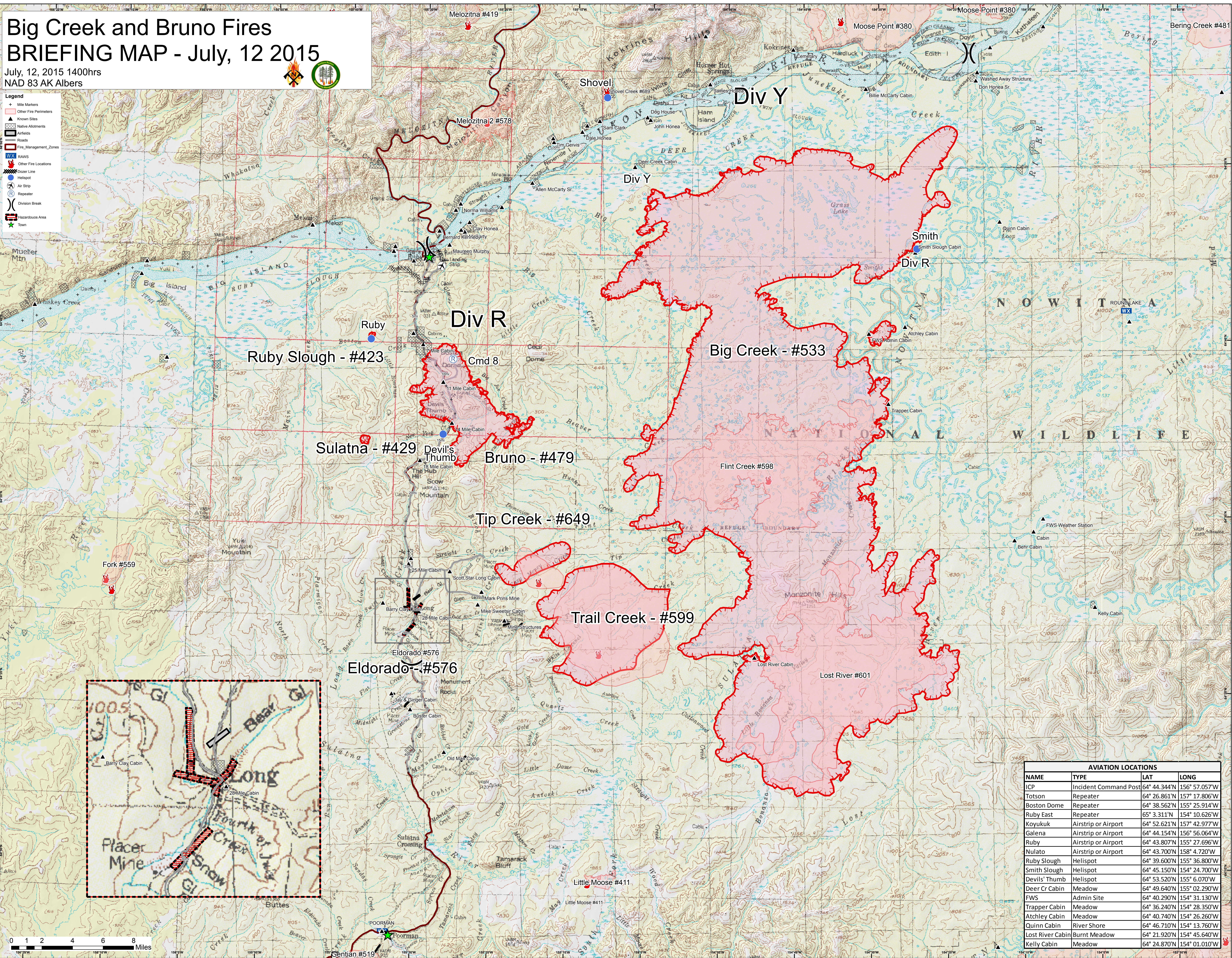


Big Creek and Bruno Fires BRIEFING MAP - July, 12 2015

July, 12, 2015 1400hrs
NAD 83 AK Albers



- Legend**
- + Mile Markers
 - Other Fire Perimeters
 - Known Sites
 - Native Allotments
 - Airfields
 - Roads
 - Fire_Management_Zones
 - RAWS
 - Other Fire Locations
 - Deer Line
 - Helispot
 - Air Strip
 - Repeater
 - Division Break
 - Hazardous Area
 - Town



| AVIATION LOCATIONS | | | |
|--------------------|-----------------------|--------------|---------------|
| NAME | TYPE | LAT | LONG |
| ICP | Incident Command Post | 64° 44.344'N | 156° 57.057'W |
| Totson | Repeater | 64° 26.861'N | 157° 17.806'W |
| Boston Dome | Repeater | 64° 38.562'N | 155° 25.914'W |
| Ruby East | Repeater | 65° 3.311'N | 154° 10.626'W |
| Koyukuk | Airstrip or Airport | 64° 52.621'N | 157° 42.977'W |
| Galena | Airstrip or Airport | 64° 44.154'N | 156° 56.064'W |
| Ruby | Airstrip or Airport | 64° 43.807'N | 155° 27.696'W |
| Nulato | Airstrip or Airport | 64° 43.700'N | 158° 4.720'W |
| Ruby Slough | Helispot | 64° 39.600'N | 155° 36.800'W |
| Smith Slough | Helispot | 64° 45.150'N | 154° 24.700'W |
| Devils' Thumb | Helispot | 64° 53.520'N | 155° 6.070'W |
| Deer Cr Cabin | Meadow | 64° 49.640'N | 155° 02.290'W |
| FWS | Admin Site | 64° 40.290'N | 154° 31.130'W |
| Trapper Cabin | Meadow | 64° 36.240'N | 154° 28.350'W |
| Atchley Cabin | Meadow | 64° 40.740'N | 154° 26.260'W |
| Quinn Cabin | River Shore | 64° 46.710'N | 154° 13.760'W |
| Lost River Cabin | Burnt Meadow | 64° 21.920'N | 154° 45.640'W |
| Kelly Cabin | Meadow | 64° 24.870'N | 154° 01.010'W |

