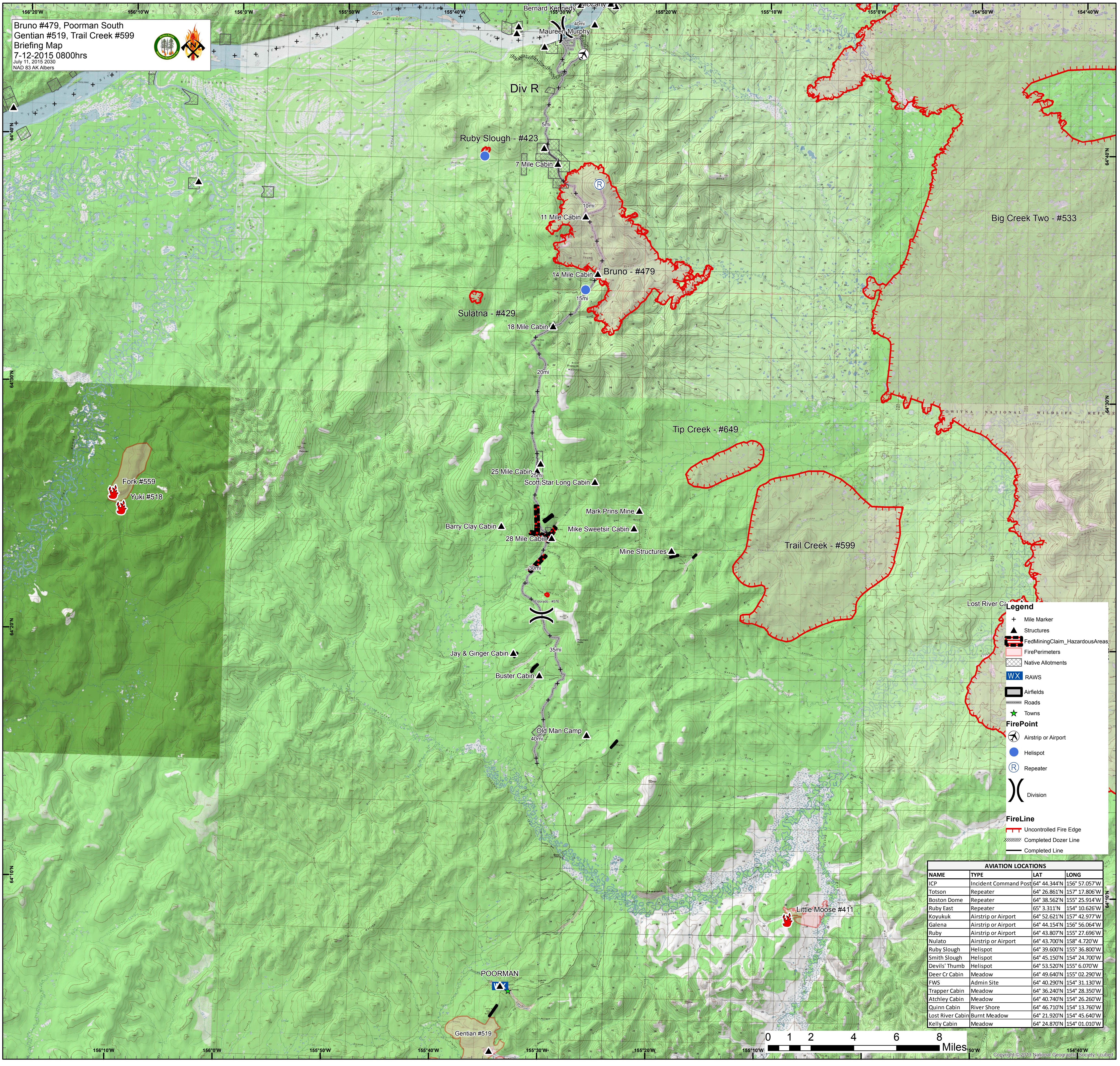


Bruno #479, Poorman South  
 Gentian #519, Trail Creek #599  
 Briefing Map  
 7-12-2015 0800hrs  
 July 11, 2015 2030  
 NAD 83 AK Albers



Big Creek Two - #533

Tip Creek - #649

Trail Creek - #599

Fork #559  
 Yuki #518

**Legend**

- + Mile Marker
- ▲ Structures
- ▲ FedMiningClaim\_HazardousAreas
- ▭ FirePerimeters
- ▭ Native Allotments
- W X RAWS
- ▭ Airfields
- ▭ Roads
- ★ Towns
- ★ FirePoint
- ✈ Airstrip or Airport
- Helispot
- Ⓡ Repeater
- ) Division

**FireLine**

- ▬ Uncontrolled Fire Edge
- ▬ Completed Dozer Line
- ▬ Completed Line

AVIATION LOCATIONS			
NAME	TYPE	LAT	LONG
ICP	Incident Command Post	64° 44.344'N	156° 57.057'W
Totson	Repeater	64° 26.861'N	157° 17.806'W
Boston Dome	Repeater	64° 38.562'N	155° 25.914'W
Ruby East	Repeater	65° 3.311'N	154° 10.626'W
Koyukuk	Airstrip or Airport	64° 52.621'N	157° 42.977'W
Galena	Airstrip or Airport	64° 44.154'N	156° 56.064'W
Ruby	Airstrip or Airport	64° 43.807'N	155° 27.696'W
Nulato	Airstrip or Airport	64° 43.700'N	158° 4.720'W
Ruby Slough	Helispot	64° 39.600'N	155° 36.800'W
Smith Slough	Helispot	64° 45.150'N	154° 24.700'W
Devil's Thumb	Helispot	64° 53.520'N	155° 6.070'W
Deer Cr Cabin	Meadow	64° 49.640'N	155° 02.290'W
FWS	Admin Site	64° 40.290'N	154° 31.130'W
Trapper Cabin	Meadow	64° 36.240'N	154° 28.350'W
Atchley Cabin	Meadow	64° 40.740'N	154° 26.260'W
Quinn Cabin	River Shore	64° 46.710'N	154° 13.760'W
Lost River Cabin	Burnt Meadow	64° 21.920'N	154° 45.640'W
Kelly Cabin	Meadow	64° 24.870'N	154° 01.010'W

