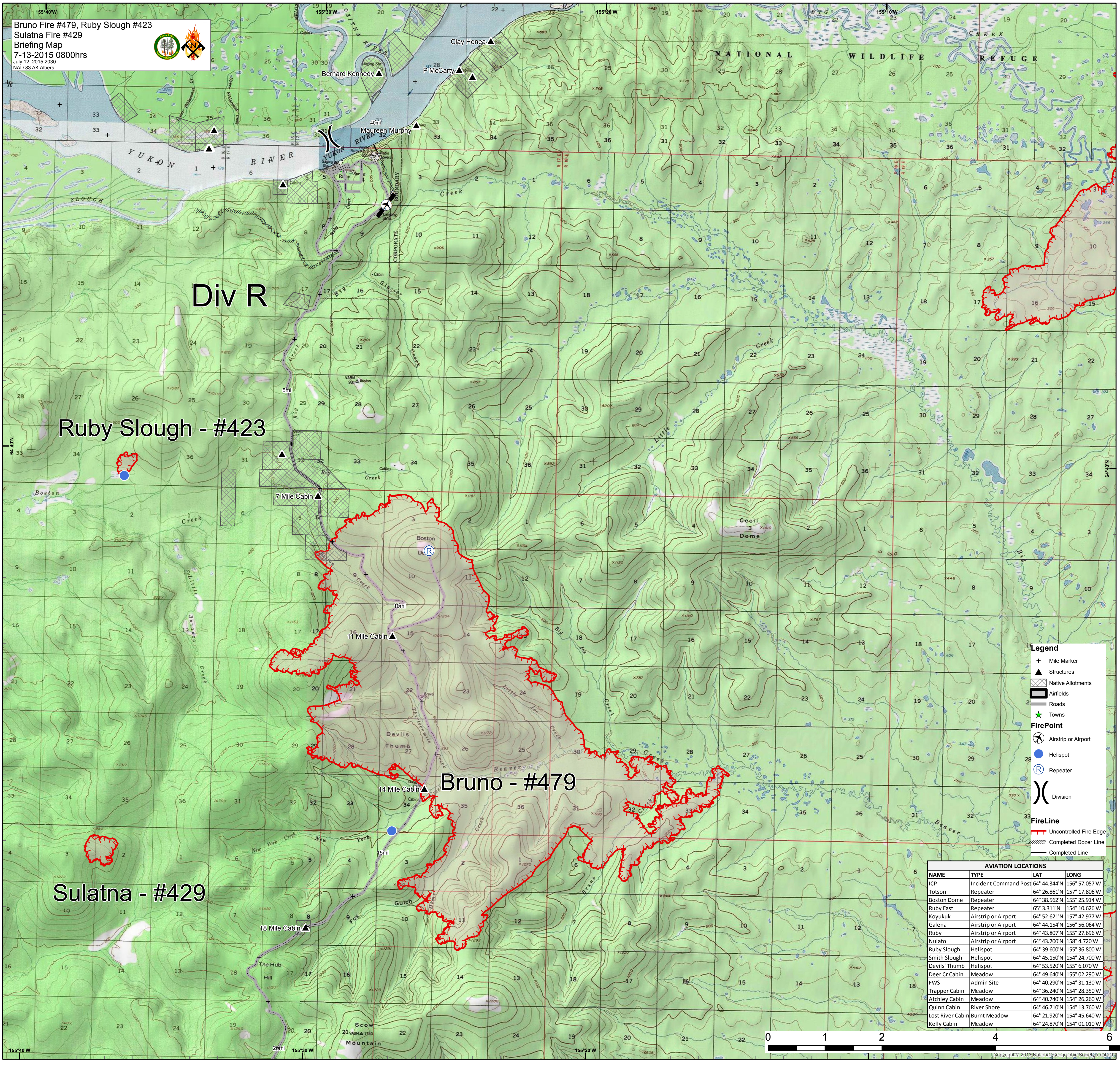


Bruno Fire #479, Ruby Slough #423
 Sulatna Fire #429
 Briefing Map
 7-13-2015 0800hrs
 July 12, 2015 2030
 NAD 83 AK Albers



Div R

Ruby Slough - #423

Bruno - #479

Sulatna - #429

Legend

- + Mile Marker
- ▴ Structures
- ▭ Native Allotments
- ▭ Airfields
- ▬ Roads
- ★ Towns
- FirePoint**
- ✈ Airstrip or Airport
- Helispot
- Ⓡ Repeater
- ⎓ Division
- FireLine**
- Uncontrolled Fire Edge
- - - Completed Dozer Line
- Completed Line

AVIATION LOCATIONS			
NAME	TYPE	LAT	LONG
ICP	Incident Command Post	64° 44.344'N	156° 57.057'W
Totson	Repeater	64° 26.861'N	157° 17.806'W
Boston Dome	Repeater	64° 38.562'N	155° 25.914'W
Ruby East	Repeater	65° 3.311'N	154° 10.626'W
Koyukuk	Airstrip or Airport	64° 52.621'N	157° 42.977'W
Galena	Airstrip or Airport	64° 44.154'N	156° 56.064'W
Ruby	Airstrip or Airport	64° 43.807'N	155° 27.696'W
Nulato	Airstrip or Airport	64° 43.700'N	158° 4.720'W
Ruby Slough	Helispot	64° 39.600'N	155° 36.800'W
Smith Slough	Helispot	64° 45.150'N	154° 24.700'W
Devils' Thumb	Helispot	64° 53.520'N	155° 6.070'W
Deer Cr Cabin	Meadow	64° 49.640'N	155° 02.290'W
FWS	Admin Site	64° 40.290'N	154° 31.130'W
Trapper Cabin	Meadow	64° 36.240'N	154° 28.350'W
Atchley Cabin	Meadow	64° 40.740'N	154° 26.260'W
Quinn Cabin	River Shore	64° 46.710'N	154° 13.760'W
Lost River Cabin	Burnt Meadow	64° 21.920'N	154° 45.640'W
Kelly Cabin	Meadow	64° 24.870'N	154° 01.010'W

