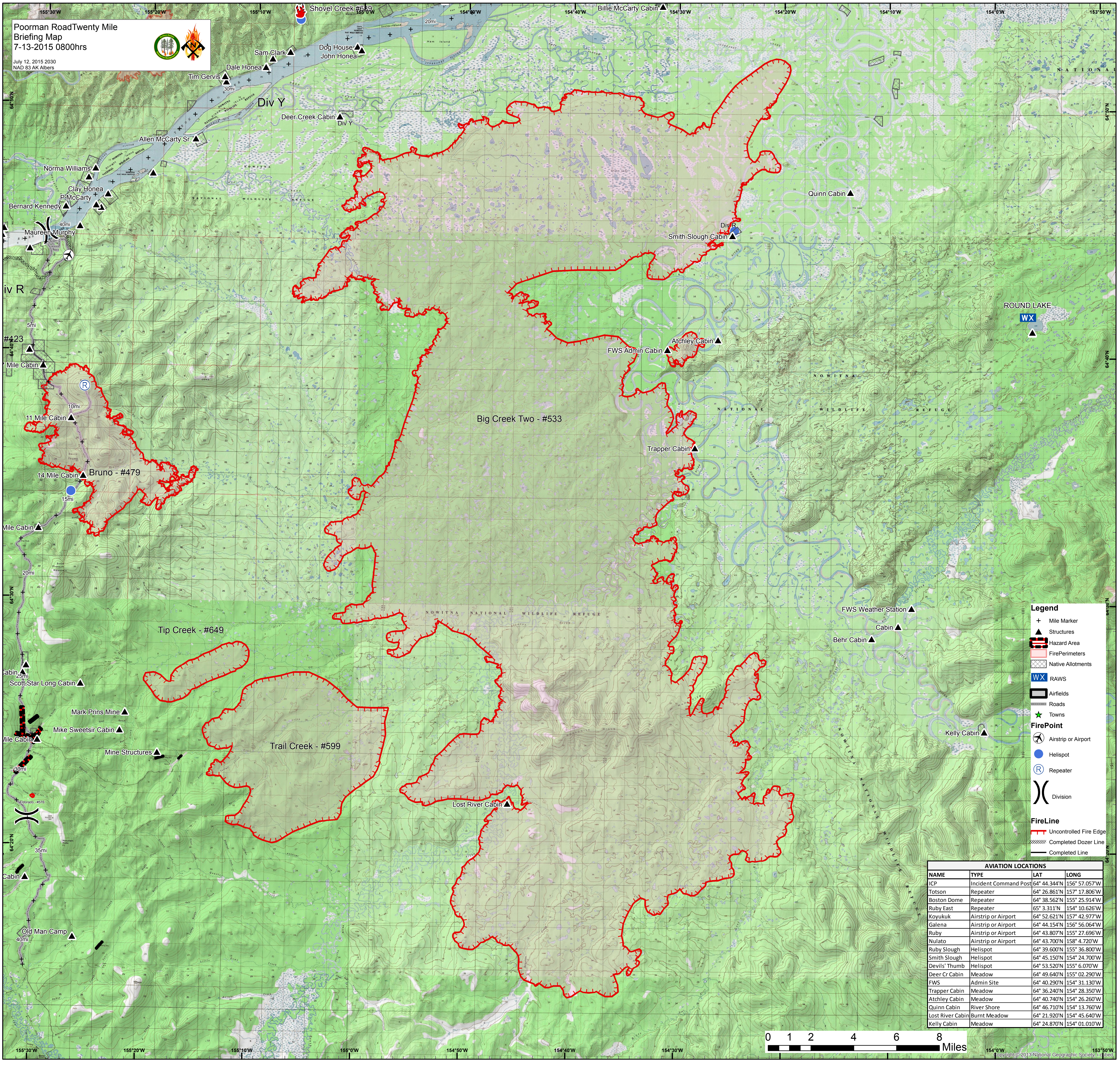


Poorman Road Twenty Mile
Briefing Map
7-13-2015 0800hrs



July 12, 2015 2030
NAD 83 AK Albers



- Legend**
- + Mile Marker
 - ▲ Structures
 - ▬ Hazard Area
 - ▬ Fire Perimeters
 - ▨ Native Allotments
 - WX RAWs
 - ▭ Airfields
 - ▬ Roads
 - ★ Towns
 - ⊕ FirePoint
 - ⊕ Airstrip or Airport
 - Helispot
 - Ⓡ Repeater
 - ⎓ Division

- FireLine**
- ▬ Uncontrolled Fire Edge
 - ▬ Completed Dozer Line
 - ▬ Completed Line

AVIATION LOCATIONS			
NAME	TYPE	LAT	LONG
ICP	Incident Command Post	64° 44.344'N	156° 57.057'W
Totson	Repeater	64° 26.861'N	157° 17.806'W
Boston Dome	Repeater	64° 38.562'N	155° 25.914'W
Ruby East	Repeater	65° 3.311'N	154° 10.626'W
Koyukuk	Airstrip or Airport	64° 52.621'N	157° 42.977'W
Galena	Airstrip or Airport	64° 44.154'N	156° 56.064'W
Ruby	Airstrip or Airport	64° 43.807'N	155° 27.696'W
Nulato	Airstrip or Airport	64° 43.700'N	158° 4.720'W
Ruby Slough	Helispot	64° 39.600'N	155° 36.800'W
Smith Slough	Helispot	64° 45.150'N	154° 24.700'W
Devil's Thumb	Helispot	64° 53.520'N	155° 6.070'W
Deer Cr Cabin	Meadow	64° 49.640'N	155° 02.290'W
FWS	Admin Site	64° 40.290'N	154° 31.130'W
Trapper Cabin	Meadow	64° 36.240'N	154° 28.350'W
Atchley Cabin	Meadow	64° 40.740'N	154° 26.260'W
Quinn Cabin	River Shore	64° 46.710'N	154° 13.760'W
Lost River Cabin	Burnt Meadow	64° 21.920'N	154° 45.640'W
Kelly Cabin	Meadow	64° 24.870'N	154° 01.010'W

