

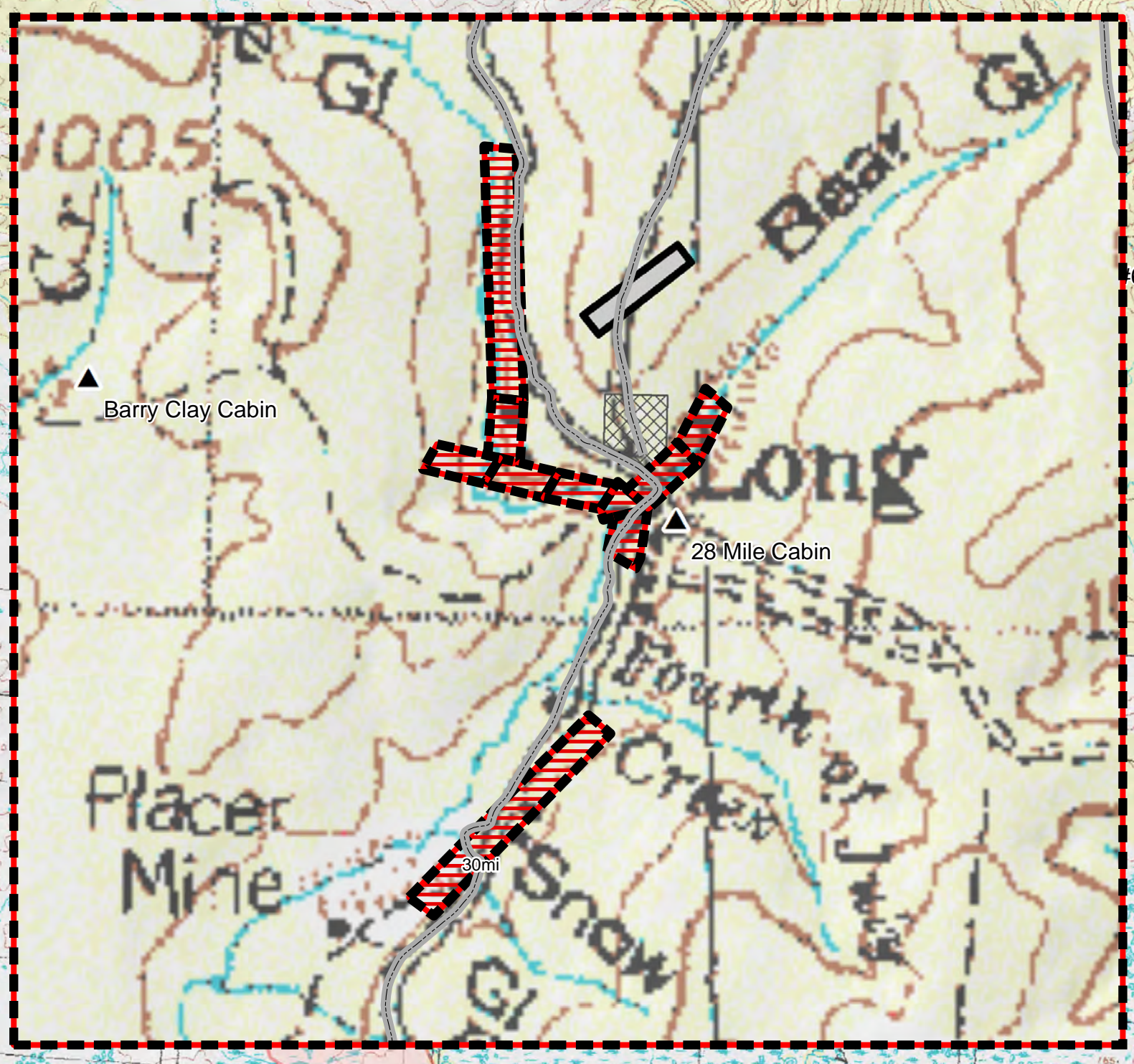
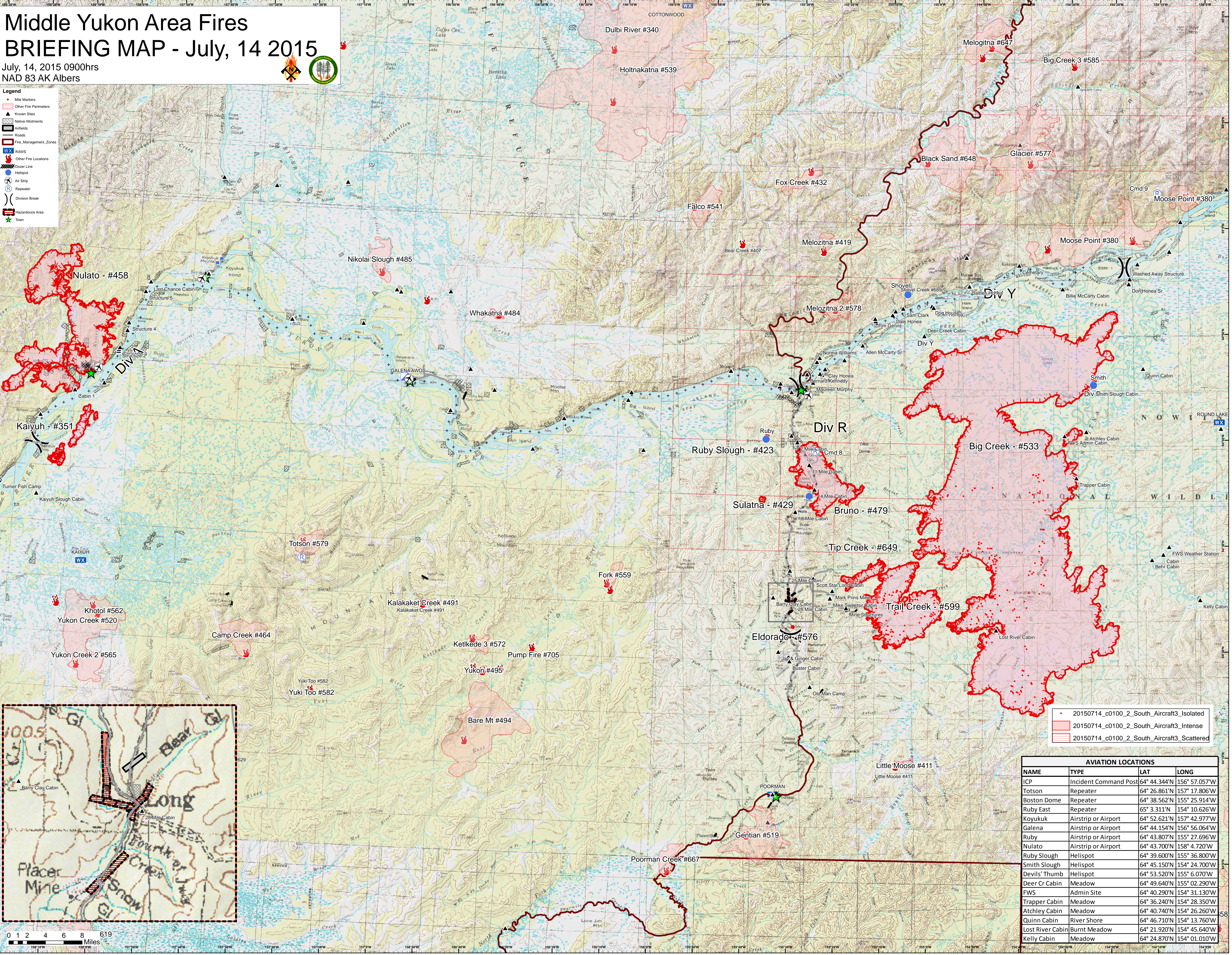
# Middle Yukon Area Fires

## BRIEFING MAP - July, 14 2015

July, 14, 2015 0900hrs  
NAD 83 AK Albers



- Legend**
- + Mile Markers
  - Other Fire Perimeters
  - Known Sites
  - Native Allotments
  - Airfields
  - Roads
  - Fire Management Zones
  - RAWS
  - Other Fire Locations
  - Doser Line
  - Helispot
  - Air Strip
  - Repeater
  - Division Break
  - Hazardous Area
  - Town



- 20150714\_c0100\_2\_South\_Aircraft3\_Isolated
- ▨ 20150714\_c0100\_2\_South\_Aircraft3\_Intense
- ▨ 20150714\_c0100\_2\_South\_Aircraft3\_Scattered

| AVIATION LOCATIONS |                       |              |               |
|--------------------|-----------------------|--------------|---------------|
| NAME               | TYPE                  | LAT          | LONG          |
| ICP                | Incident Command Post | 64° 44.344'N | 156° 07.507'W |
| Totson             | Repeater              | 64° 26.861'N | 157° 17.806'W |
| Boston Dome        | Repeater              | 64° 38.562'N | 155° 25.914'W |
| Ruby East          | Repeater              | 65° 3.311'N  | 154° 10.626'W |
| Koyukuk            | Airstrip or Airport   | 64° 52.621'N | 157° 42.977'W |
| Galena             | Airstrip or Airport   | 64° 44.154'N | 156° 56.064'W |
| Ruby               | Airstrip or Airport   | 64° 43.807'N | 155° 27.696'W |
| Nulato             | Airstrip or Airport   | 64° 43.700'N | 158° 4.720'W  |
| Ruby Slough        | Helispot              | 64° 39.600'N | 155° 36.800'W |
| Smith Slough       | Helispot              | 64° 45.150'N | 154° 24.700'W |
| Devils' Thumb      | Helispot              | 64° 53.520'N | 155° 6.070'W  |
| Deer Cr Cabin      | Meadow                | 64° 49.640'N | 155° 02.290'W |
| FWS                | Admin Site            | 64° 40.290'N | 154° 31.130'W |
| Trapper Cabin      | Meadow                | 64° 36.240'N | 154° 28.350'W |
| Atchley Cabin      | Meadow                | 64° 40.740'N | 154° 26.260'W |
| Quinn Cabin        | River Shore           | 64° 46.710'N | 154° 13.760'W |
| Lost River Cabin   | Burnt Meadow          | 64° 21.920'N | 154° 45.640'W |
| Kelly Cabin        | Meadow                | 64° 24.870'N | 154° 01.010'W |

