

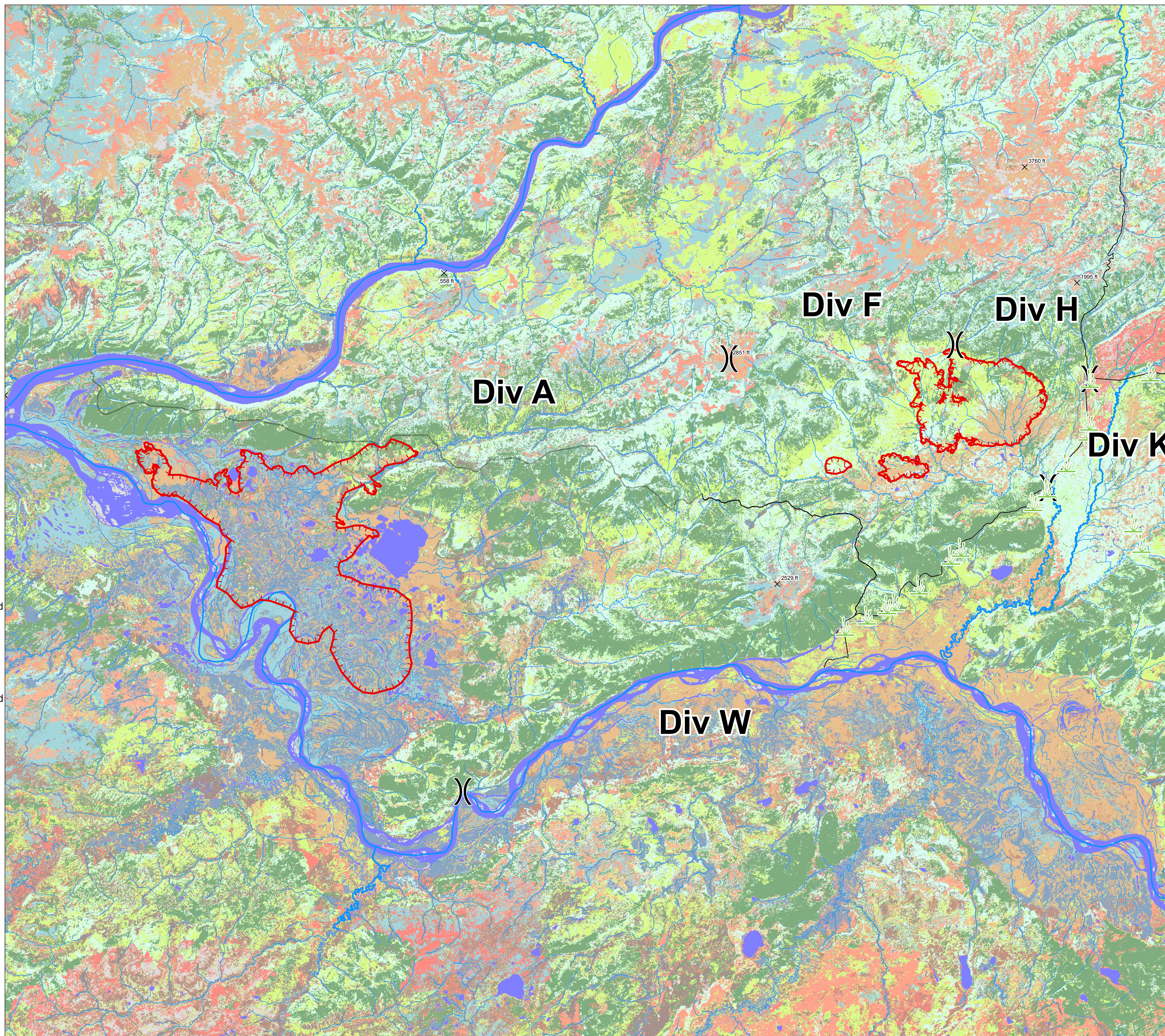


# Baker Fire

July 10, 2015

## Vegetation Map

- Invasive Species
- Agriculture-Cultivated Crops
- Agriculture-Pasture and Hay
- Alder Shrubland
- Avalanche Slope Shrubland
- Balsam Poplar-Aspen Woodland
- Barren
- Beach Meadow
- Bedrock, Scree, and Talus
- Birch-Aspen Forest
- Birch-Cottonwood-Poplar Forest
- Black Spruce Forest and Woodland
- Boreal Grassland
- Developed-High Intensity
- Developed-Low Intensity
- Developed-Medium Intensity
- Developed-Open Space
- Dry Aspen-Steppe Bluff
- Dune Grassland
- Dwarf Shrubland
- Floodplain Forest and Shrubland
- Freshwater Aquatic Bed
- Freshwater Marsh
- Herbaceous Meadow
- Mountain Hemlock Forest and Woodland
- Nodata
- Open Water
- Peatland Forests
- Periglacial Woodland and Shrubland
- Riparian Stringer Forest and Shrubland
- Shrub & Herbaceous Floodplain Wetland
- Shrub and Herbaceous Peatlands
- Shrub Swamp
- Shrub Tundra
- Sitka Spruce Forest
- Snow-Ice
- Sparse Shrub and Fell-field
- Sparse Tundra
- Spruce-Lichen Woodland
- Tidal Flat
- Tidal Marsh
- Transitional Herbaceous Vegetation
- Tussock Tundra
- Western Hemlock-Yellow-cedar Forest
- Western Red-cedar-Western Hemlock
- Wet Meadow
- White Spruce Forest and Woodland
- White Spruce-Hardwood Forest
- Willow Shrubland



1:100,000

