



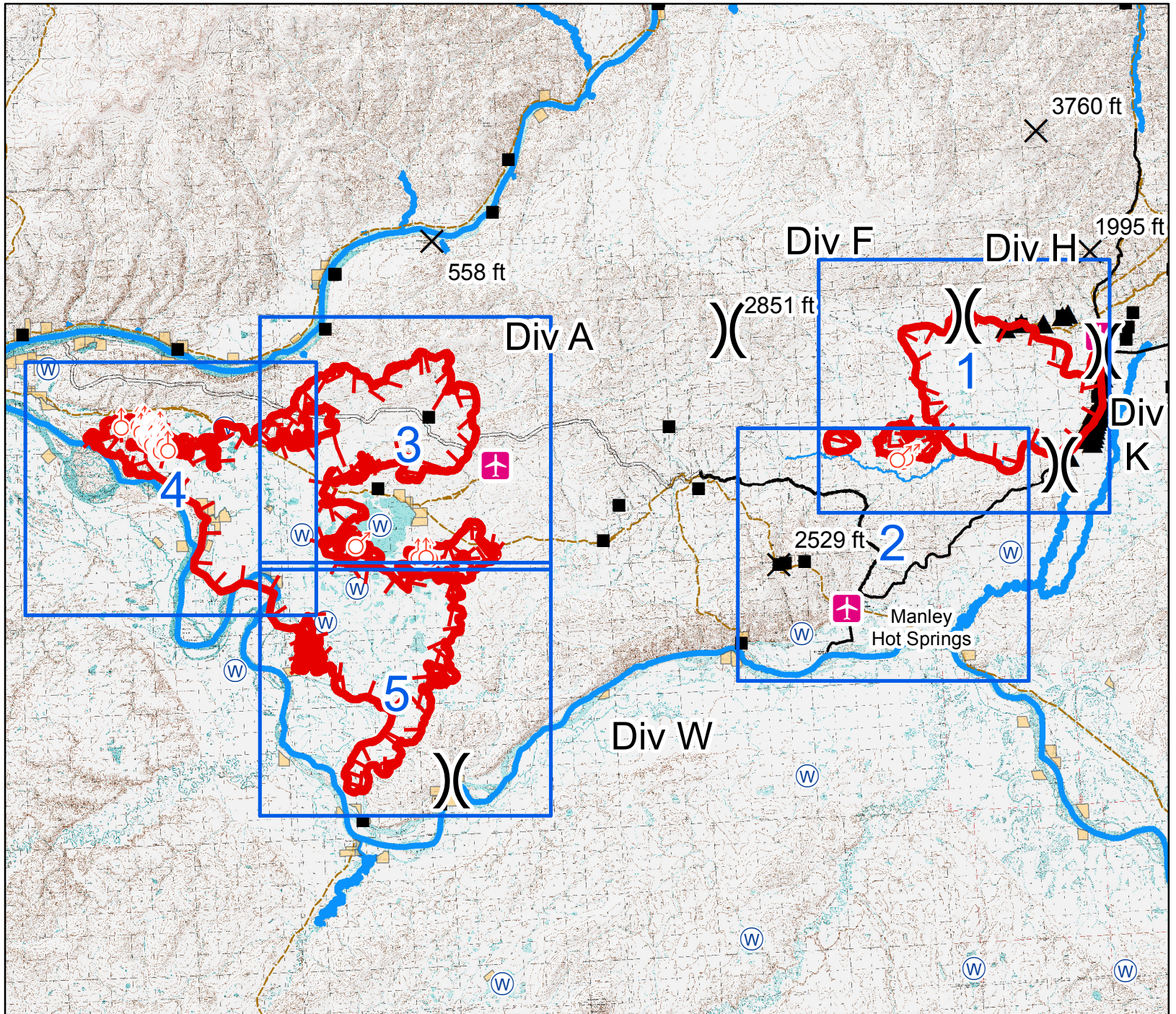
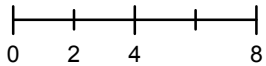
Baker & Hay Slough Fires

July 13, 2015

IAP Map

- Division Break
- Spot Fire
- Uncontrolled Fire Edge
- Aerial Water Sources
- Airport
- Known Sites
- Baker Structures
- Native Allotments
- Summit
- Jeep Trail
- Road To Tanana
- Road

1:400,000
Miles





Baker Fire

July 13, 2015

IAP Map

Page 1

)) Division Break

Uncontrolled Fire Edge

Spot Fire

Staging Area

Safety Zone

Drop Point

Airport

Helispot

Mile Marker

Baker Structures

Known Sites

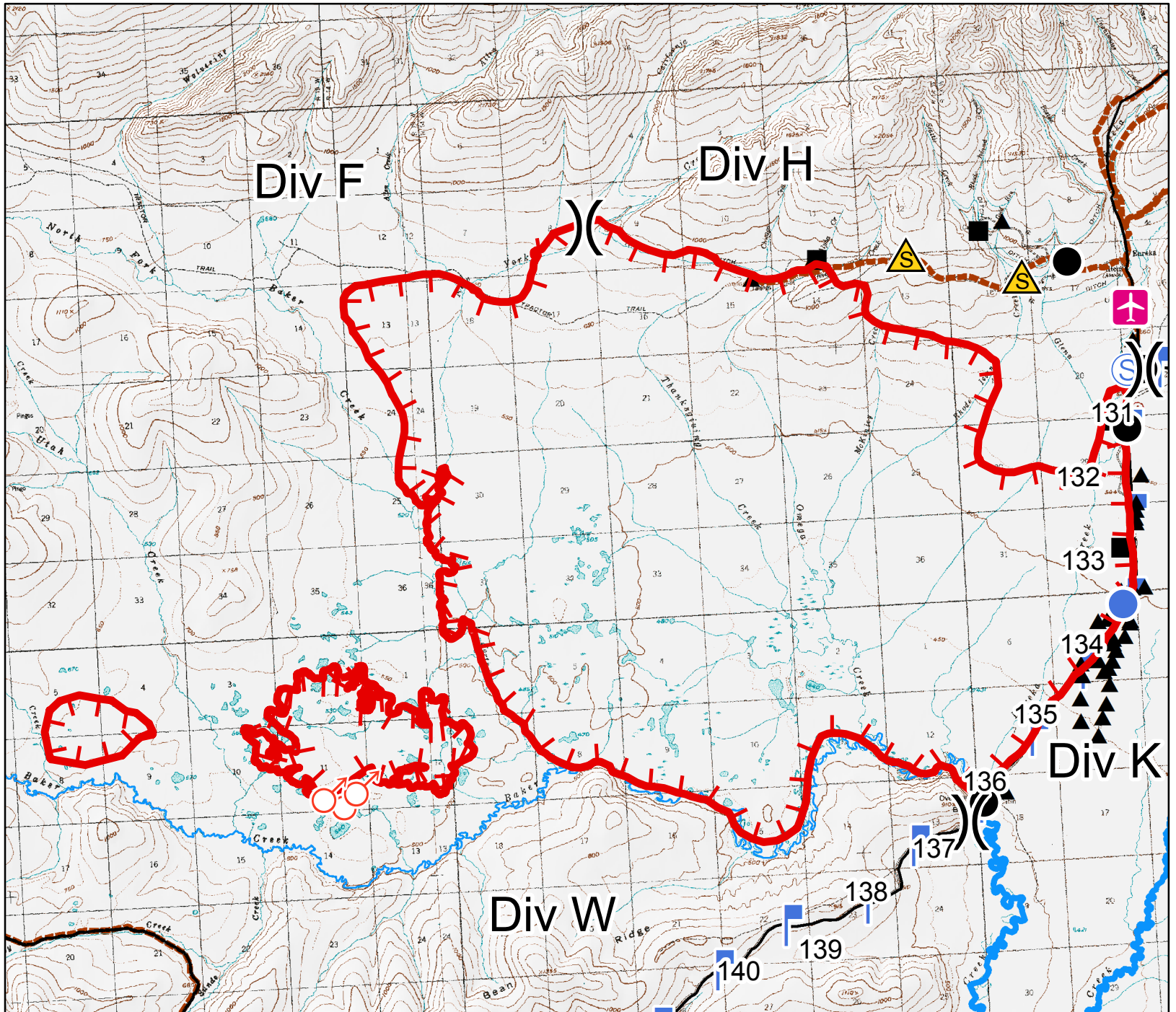
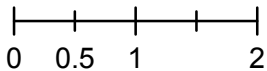
Road To Tanana

Road

Jeep Trail

1:100,000

Miles





Baker Fire

July 13, 2015

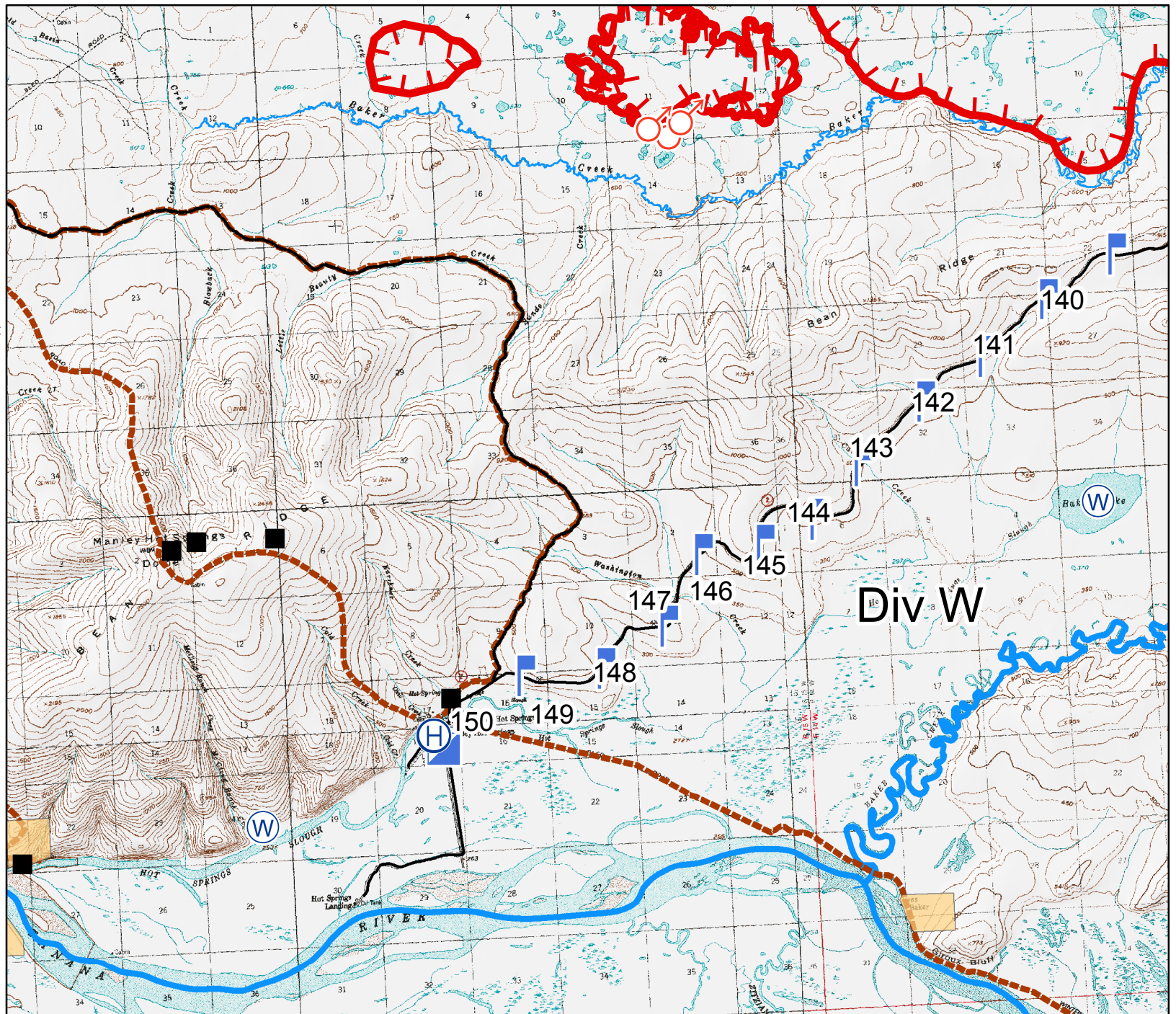
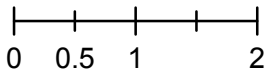
IAP Map

Page 2

- Incident Command Post
- Uncontrolled Fire Edge
- Spot Fire
- Helibase
- Aerial Water Source
- Native Allotments
- Known Sites
- Mile Marker
- Road To Tanana
- Jeep Trail

1:100,000

Miles





Baker Fire

July 13, 2015

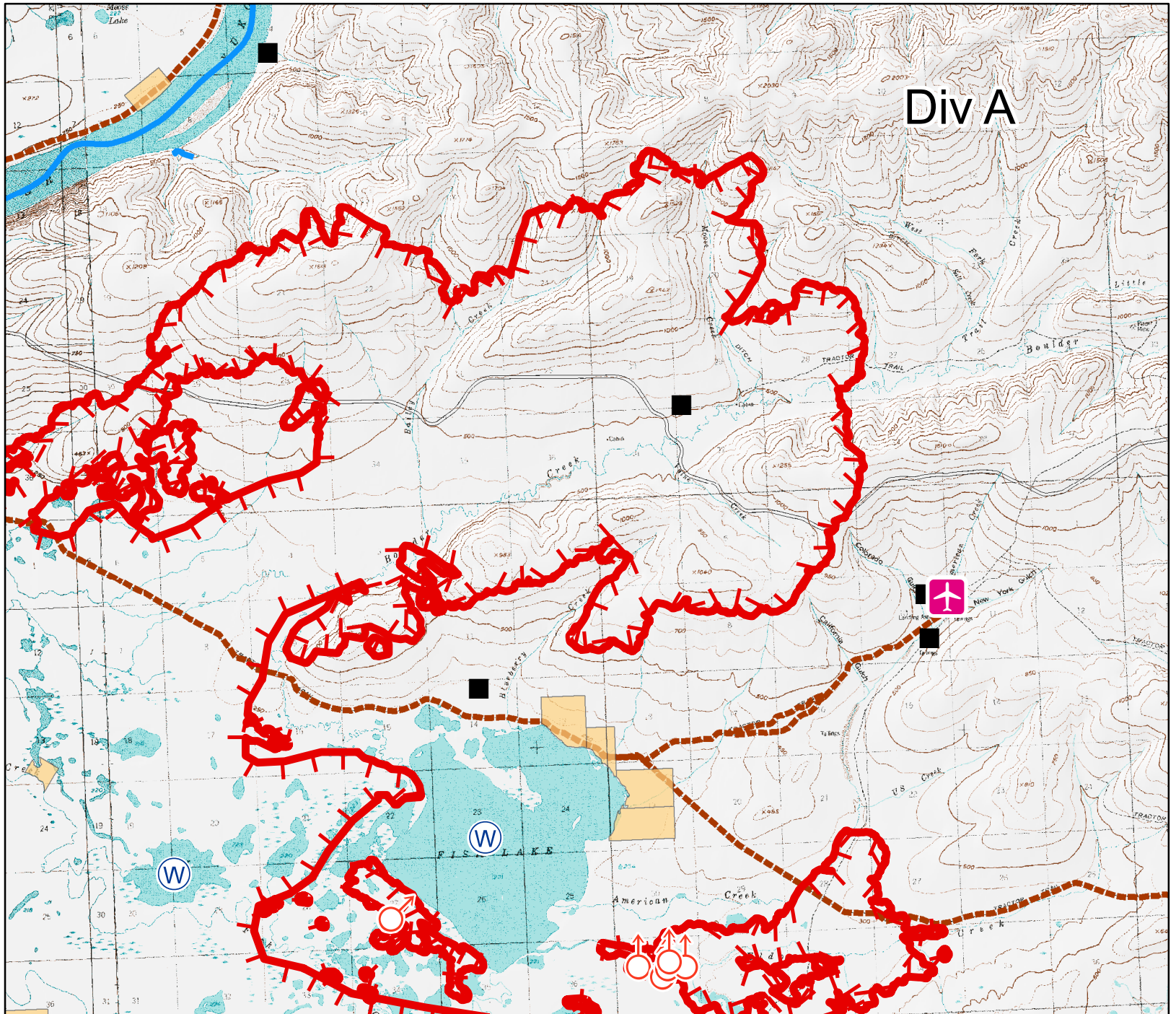
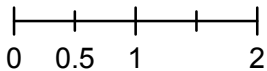
IAP Map

Page 3

- Uncontrolled Fire Edge
- Spot Fire
- Airport
- Aerial Water Source
- Summit
- Native Allotments
- Known Sites
- Road To Tanana
- Jeep Trail

1:100,000

Miles



Div A



Baker Fire

July 13, 2015

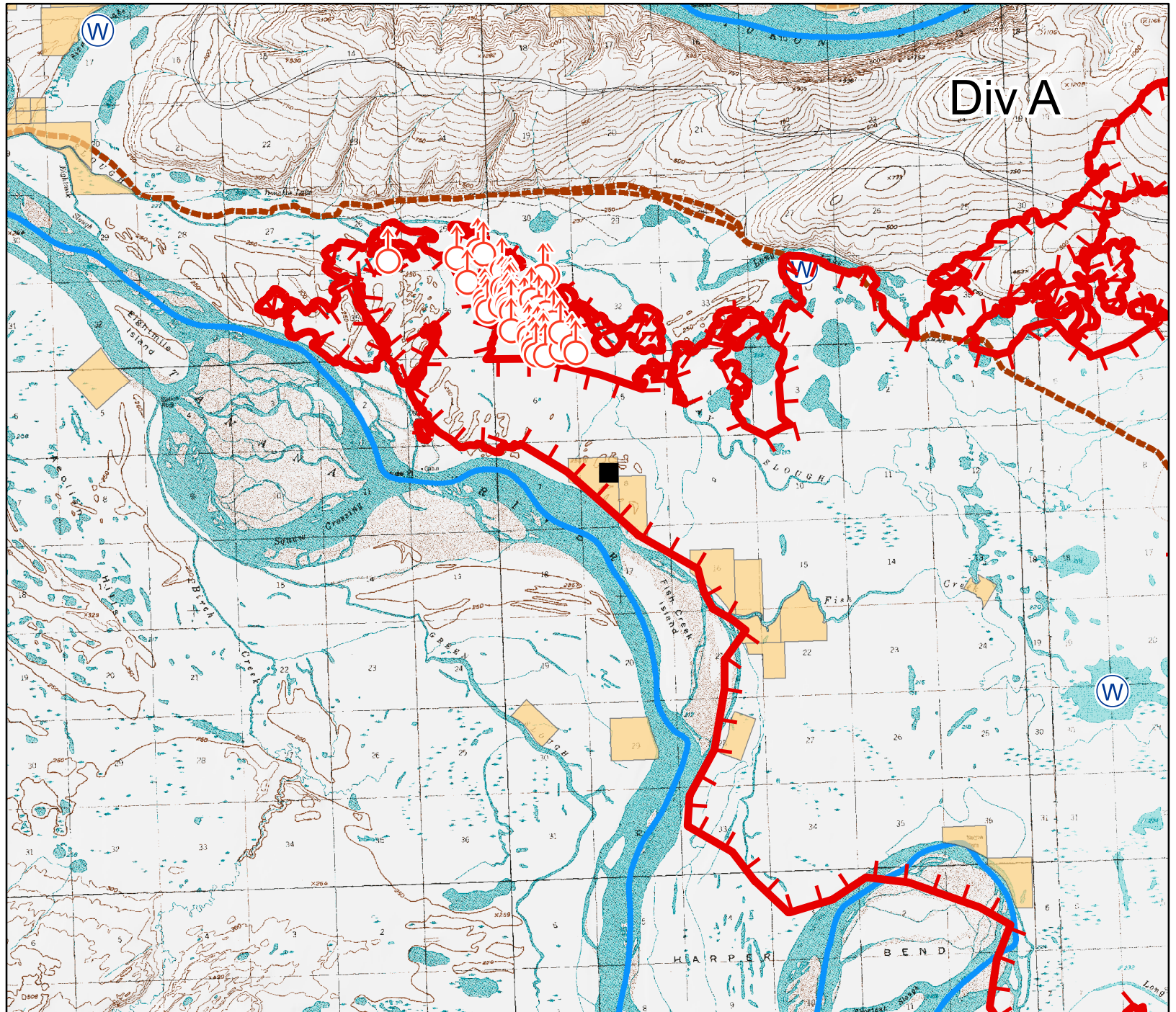
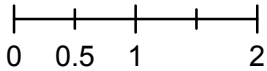
IAP Map

Page 4

- Uncontrolled Fire Edge
- Spot Fire
- Aerial Water Source
- Native Allotments
- Known Sites
- Road To Tanana
- Jeep Trail


1:100,000

Miles







Baker Fire
July 13, 2015
IAP Map
Page 5

 Division Break

 Uncontrolled Fire Edge

 Aerial Water Source

 Native Allotments

 Known Sites



1:100,000

Miles

