

Briefing Map

Baker Fire

AK-TAD-456

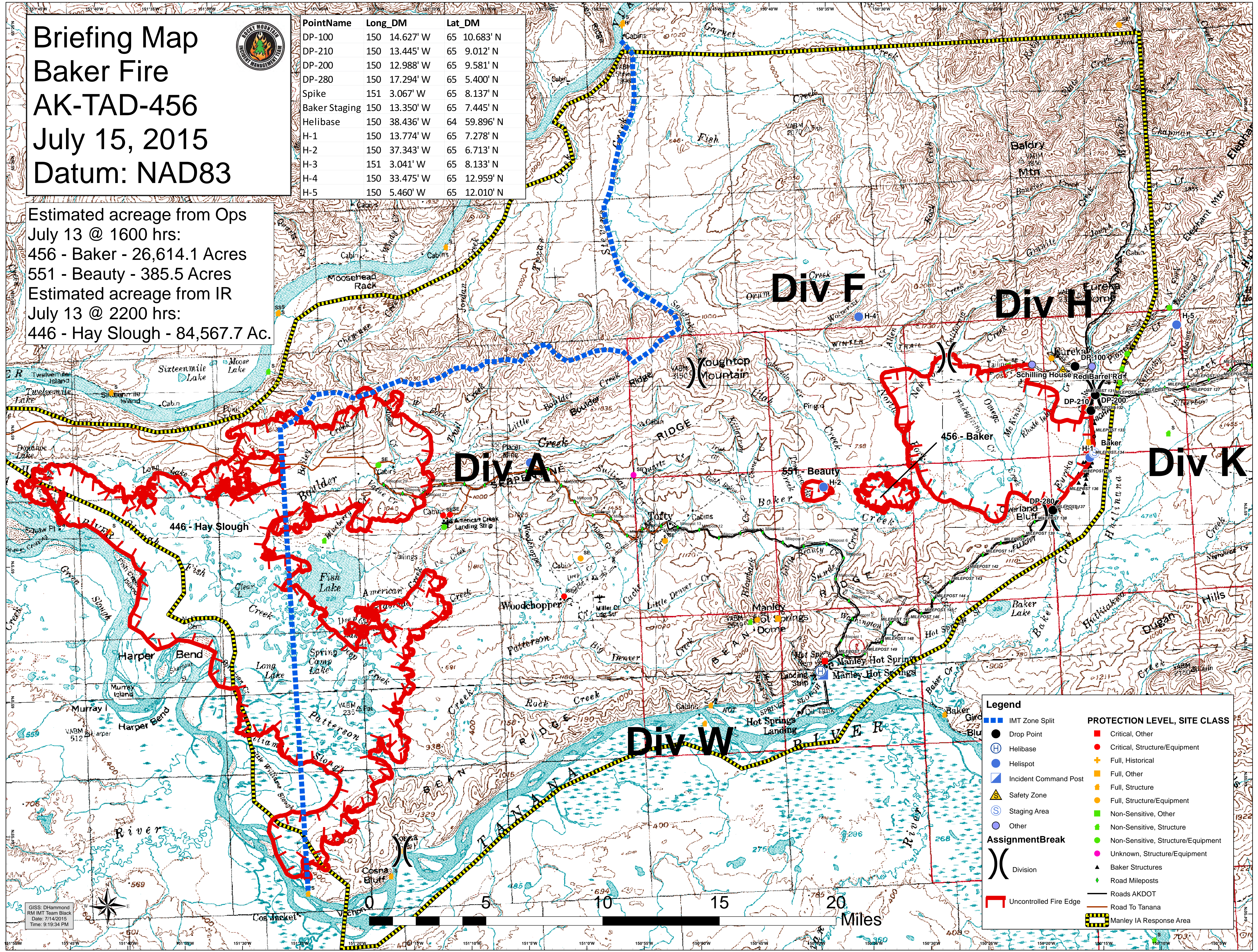
July 15, 2015

Datum: NAD83



PointName	Long_DM	Lat_DM
DP-100	150 14.627' W	65 10.683' N
DP-210	150 13.445' W	65 9.012' N
DP-200	150 12.988' W	65 9.581' N
DP-280	150 17.294' W	65 5.400' N
Spike	151 3.067' W	65 8.137' N
Baker Staging	150 13.350' W	65 7.445' N
Helibase	150 38.436' W	64 59.896' N
H-1	150 13.774' W	65 7.278' N
H-2	150 37.343' W	65 6.713' N
H-3	151 3.041' W	65 8.133' N
H-4	150 33.475' W	65 12.959' N
H-5	150 5.460' W	65 12.010' N

Estimated acreage from Ops
 July 13 @ 1600 hrs:
 456 - Baker - 26,614.1 Acres
 551 - Beauty - 385.5 Acres
 Estimated acreage from IR
 July 13 @ 2200 hrs:
 446 - Hay Slough - 84,567.7 Ac.



Legend

- IMT Zone Split
- Drop Point
- Helibase
- Helispot
- Incident Command Post
- Safety Zone
- Staging Area
- Other
- AssignmentBreak
- Division
- Uncontrolled Fire Edge
- Manley IA Response Area

PROTECTION LEVEL, SITE CLASS

- Critical, Other
- Critical, Structure/Equipment
- Full, Historical
- Full, Other
- Full, Structure
- Full, Structure/Equipment
- Non-Sensitive, Other
- Non-Sensitive, Structure/Equipment
- Non-Sensitive, Structure
- Non-Sensitive, Structure/Equipment
- Unknown, Structure/Equipment
- Baker Structures
- Road Mileposts
- Roads AKDOT
- Road To Tanana

GISS: DHammond
 RM IMT Team Black
 Date: 7/14/2015
 Time: 9:19:34 PM