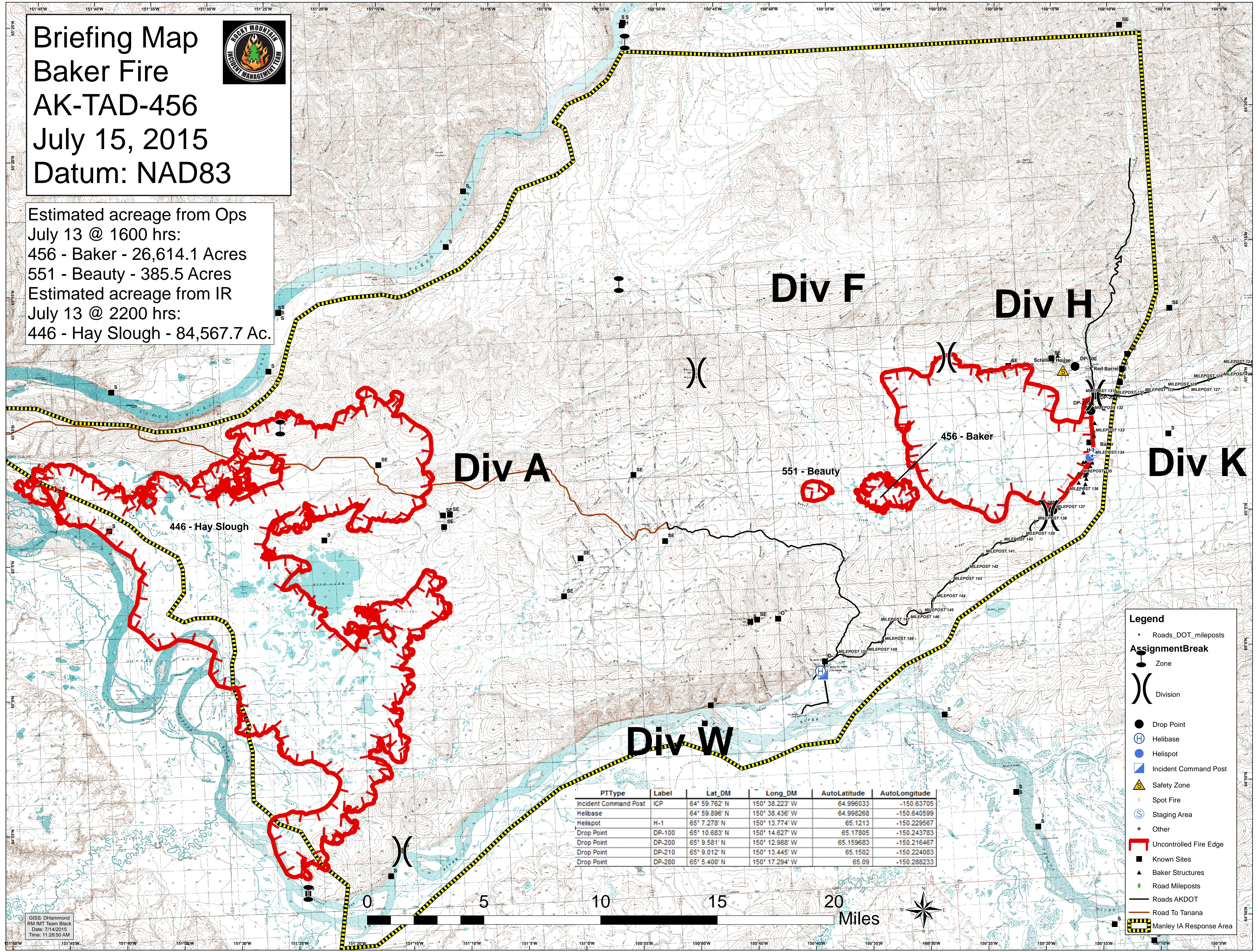


# Briefing Map Baker Fire AK-TAD-456 July 15, 2015 Datum: NAD83



Estimated acreage from Ops  
July 13 @ 1600 hrs:  
456 - Baker - 26,614.1 Acres  
551 - Beauty - 385.5 Acres  
Estimated acreage from IR  
July 13 @ 2200 hrs:  
446 - Hay Slough - 84,567.7 Ac.



PTType	Label	Lat_DM	Long_DM	AutoLatitude	AutoLongitude
Incident Command Post	ICP	64° 59.762' N	150° 38.223' W	64.996033	-150.63705
Helibase		64° 59.896' N	150° 38.436' W	64.998268	-150.640599
Helispot	H-1	65° 7.278' N	150° 13.774' W	65.1213	-150.229567
Drop Point	DP-100	65° 10.683' N	150° 14.627' W	65.17805	-150.243783
Drop Point	DP-200	65° 9.581' N	150° 12.988' W	65.159683	-150.216467
Drop Point	DP-210	65° 9.012' N	150° 13.445' W	65.1502	-150.224083
Drop Point	DP-280	65° 5.400' N	150° 17.294' W	65.09	-150.288233

- Legend**
- Roads\_DOT\_mileposts
  - AssignmentBreak**
  - Zone
  - ) ( Division
  - Drop Point
  - Ⓜ Helibase
  - Helispot
  - ▣ Incident Command Post
  - ▲ Safety Zone
  - Spot Fire
  - Ⓢ Staging Area
  - Other
  - ▬ Uncontrolled Fire Edge
  - Known Sites
  - ▲ Baker Structures
  - ◆ Road Mileposts
  - ▬ Roads AKDOT
  - ▬ Road To Tanana
  - ▬ Manley IA Response Area



GISS: DHammond  
RM MT Team Black  
Date: 7/14/2015  
Time: 11:28:50 AM