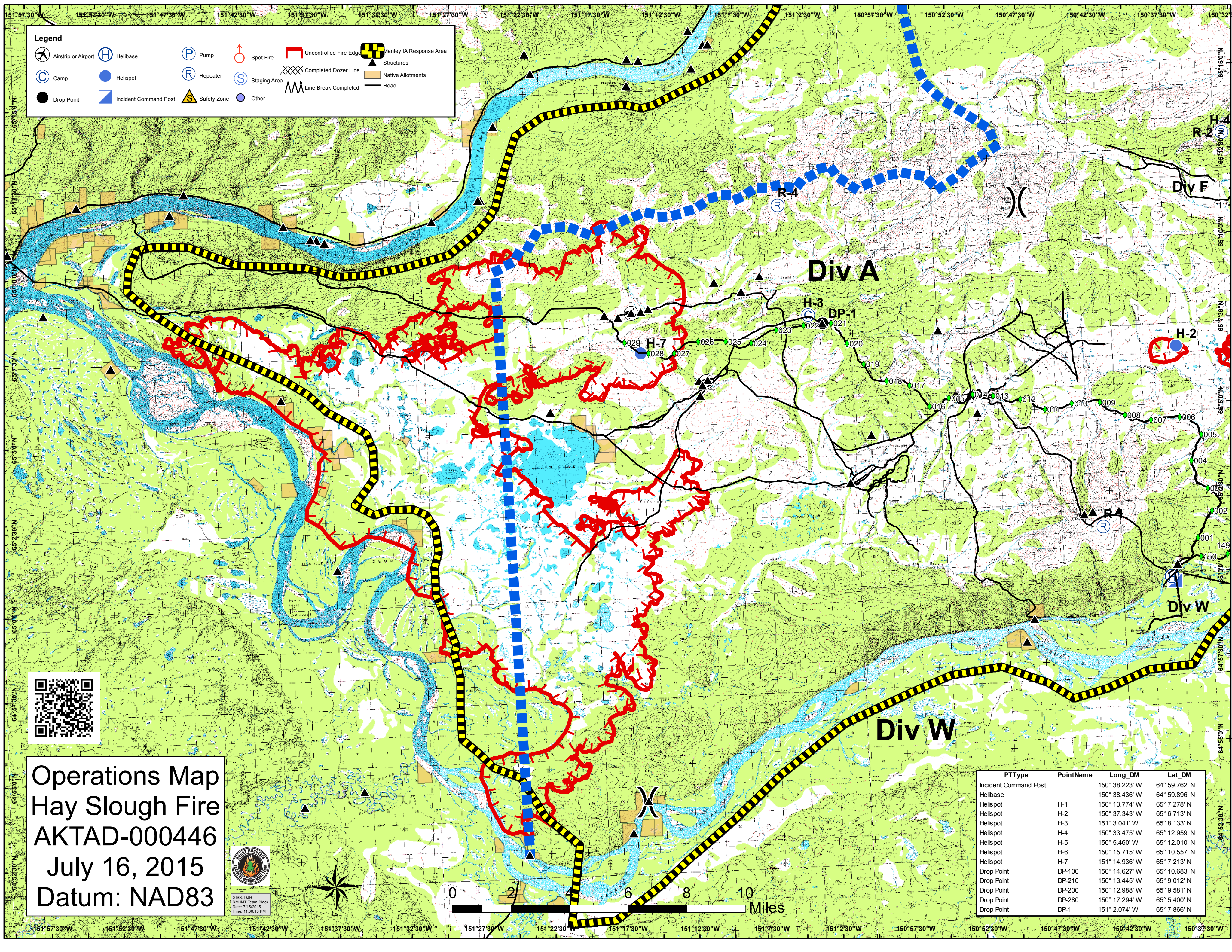


Legend

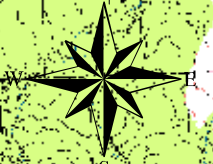
- Airstrip or Airport
- Helibase
- Pump
- Spot Fire
- Uncontrolled Fire Edge
- Manley IA Response Area
- Camp
- Helispot
- Repeater
- Staging Area
- Completed Dozer Line
- Line Break Completed
- Drop Point
- Incident Command Post
- Safety Zone
- Other
- Structures
- Native Allotments
- Road



Operations Map
 Hay Slough Fire
 AKTAD-000446
 July 16, 2015
 Datum: NAD83



GISS: DJH
 RM/MT Team Black
 Date: 7/15/2015
 Time: 11:00:13 PM



PTType	PointName	Long_DM	Lat_DM
Incident Command Post		150° 38.223' W	64° 59.762' N
Helibase		150° 38.436' W	64° 59.896' N
Helispot	H-1	150° 13.774' W	65° 7.278' N
Helispot	H-2	150° 37.343' W	65° 6.713' N
Helispot	H-3	151° 3.041' W	65° 8.133' N
Helispot	H-4	150° 33.475' W	65° 12.959' N
Helispot	H-5	150° 5.460' W	65° 12.010' N
Helispot	H-6	150° 15.715' W	65° 10.557' N
Helispot	H-7	151° 14.936' W	65° 7.213' N
Drop Point	DP-100	150° 14.627' W	65° 10.683' N
Drop Point	DP-210	150° 13.445' W	65° 9.012' N
Drop Point	DP-200	150° 12.988' W	65° 9.581' N
Drop Point	DP-280	150° 17.294' W	65° 5.400' N
Drop Point	DP-1	151° 2.074' W	65° 7.866' N