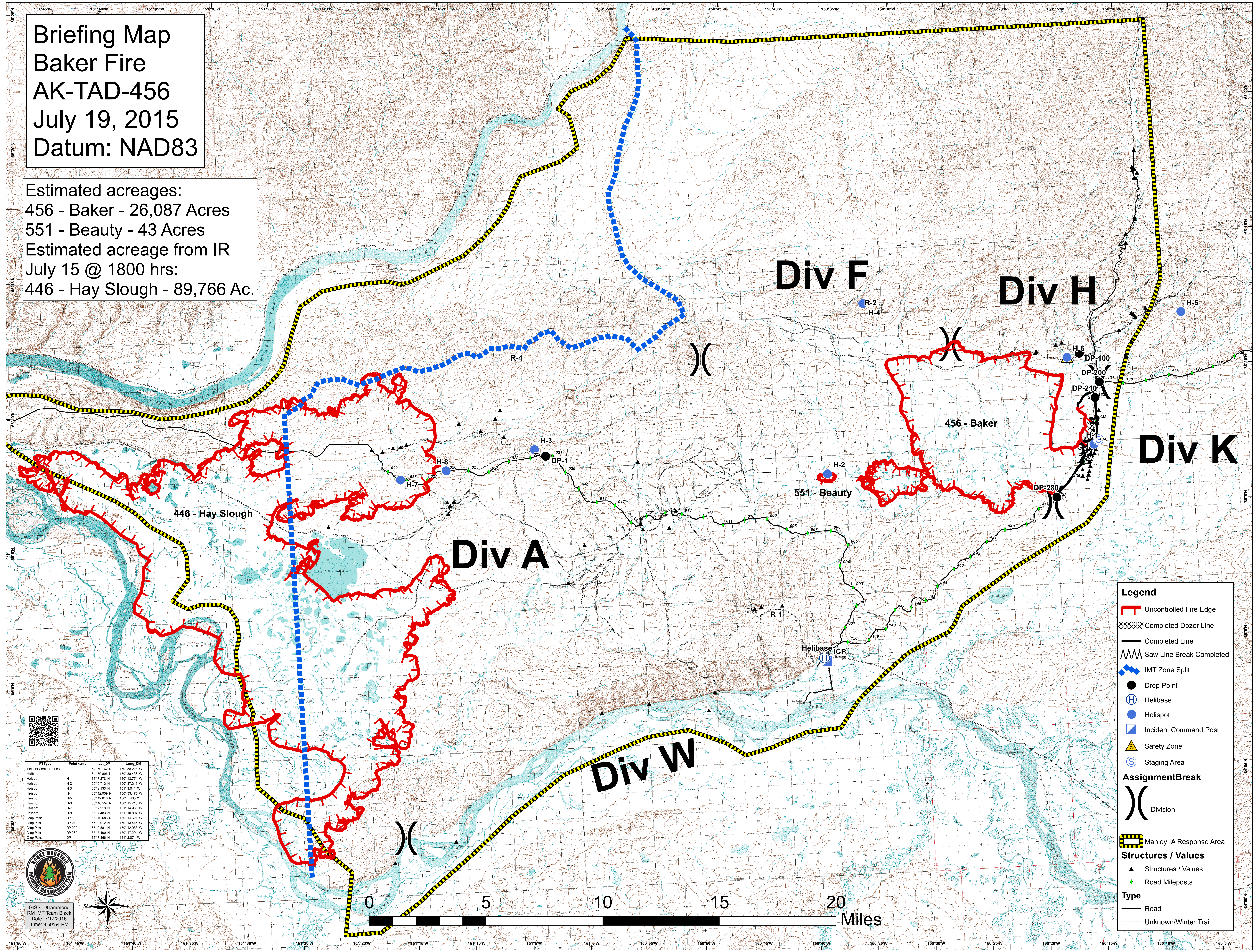


**Briefing Map**  
**Baker Fire**  
**AK-TAD-456**  
**July 19, 2015**  
**Datum: NAD83**

Estimated acreages:  
 456 - Baker - 26,087 Acres  
 551 - Beauty - 43 Acres  
 Estimated acreage from IR  
 July 15 @ 1800 hrs:  
 446 - Hay Slough - 89,766 Ac.



Point Name	Lat	Long
Incident Command Post	64° 59.762' N	150° 38.223' W
Helibase	64° 59.886' N	150° 38.436' W
Helispot H-1	65° 7.278' N	150° 13.714' W
Helispot H-2	65° 6.713' N	150° 37.343' W
Helispot H-3	65° 8.132' N	151° 3.041' W
Helispot H-4	65° 12.889' N	150° 33.479' W
Helispot H-5	65° 12.010' N	150° 5.450' W
Helispot H-6	65° 10.557' N	150° 15.715' W
Helispot H-7	65° 7.215' N	151° 14.838' W
Helispot H-8	65° 7.483' N	151° 10.894' W
Drop Point DP-100	65° 10.683' N	150° 14.627' W
Drop Point DP-210	65° 10.012' N	150° 13.448' W
Drop Point DP-200	65° 9.581' N	150° 12.988' W
Drop Point DP-280	65° 5.400' N	150° 17.294' W
Drop Point DP-1	65° 7.869' N	151° 2.074' W

**Legend**

- Uncontrolled Fire Edge
- Completed Dozer Line
- Completed Line
- Saw Line Break Completed
- IMT Zone Split
- Drop Point
- Helibase
- Helispot
- Incident Command Post
- Safety Zone
- Staging Area

**Assignment/Break**

- Division

**Manley IA Response Area**

**Structures / Values**

- Structures / Values
- Road Mileposts

**Type**

- Road
- Unknown/Winter Trail

