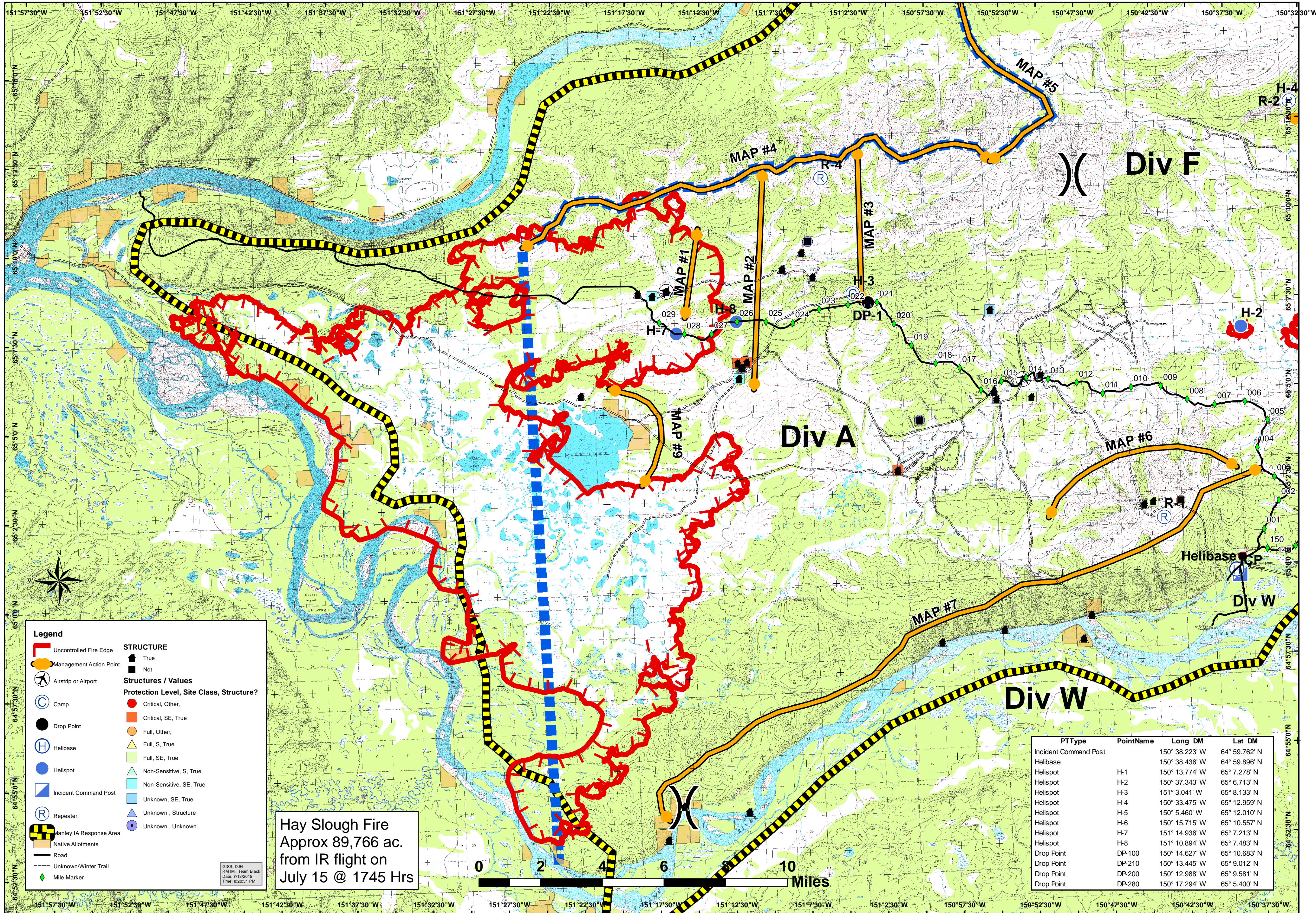




# Operations Map - July 21, 2015

Hay Slough Fire  
AKTAD-000446  
Datum: NAD83



**Legend**

- Uncontrolled Fire Edge
- Management Action Point
- Airstrip or Airport
- Camp
- Drop Point
- Helibase
- Helispot
- Incident Command Post
- Repeater
- Manley IA Response Area
- Native Allotments
- Road
- Unknown/Winter Trail
- Mile Marker

**STRUCTURE**

- True
- Not

**Structures / Values**

Protection Level, Site Class, Structure?

- Critical, Other
- Critical, SE, True
- Full, Other
- Full, S, True
- Full, SE, True
- Non-Sensitive, S, True
- Non-Sensitive, SE, True
- Unknown, SE, True
- Unknown, Structure
- Unknown, Unknown

GISS: DJH  
RM IMT Team Black  
Date: 7/18/2015  
Time: 8:20:51 PM

Hay Slough Fire  
Approx 89,766 ac.  
from IR flight on  
July 15 @ 1745 Hrs

PTType	PointName	Long_DM	Lat_DM
Incident Command Post		150° 38.223' W	64° 59.762' N
Helibase		150° 38.436' W	64° 59.896' N
Helispot	H-1	150° 13.774' W	65° 7.278' N
Helispot	H-2	150° 37.343' W	65° 6.713' N
Helispot	H-3	151° 3.041' W	65° 8.133' N
Helispot	H-4	150° 33.475' W	65° 12.959' N
Helispot	H-5	150° 5.460' W	65° 12.010' N
Helispot	H-6	150° 15.715' W	65° 10.557' N
Helispot	H-7	151° 14.936' W	65° 7.213' N
Helispot	H-8	151° 10.894' W	65° 7.483' N
Drop Point	DP-100	150° 14.627' W	65° 10.683' N
Drop Point	DP-210	150° 13.445' W	65° 9.012' N
Drop Point	DP-200	150° 12.988' W	65° 9.581' N
Drop Point	DP-280	150° 17.294' W	65° 5.400' N