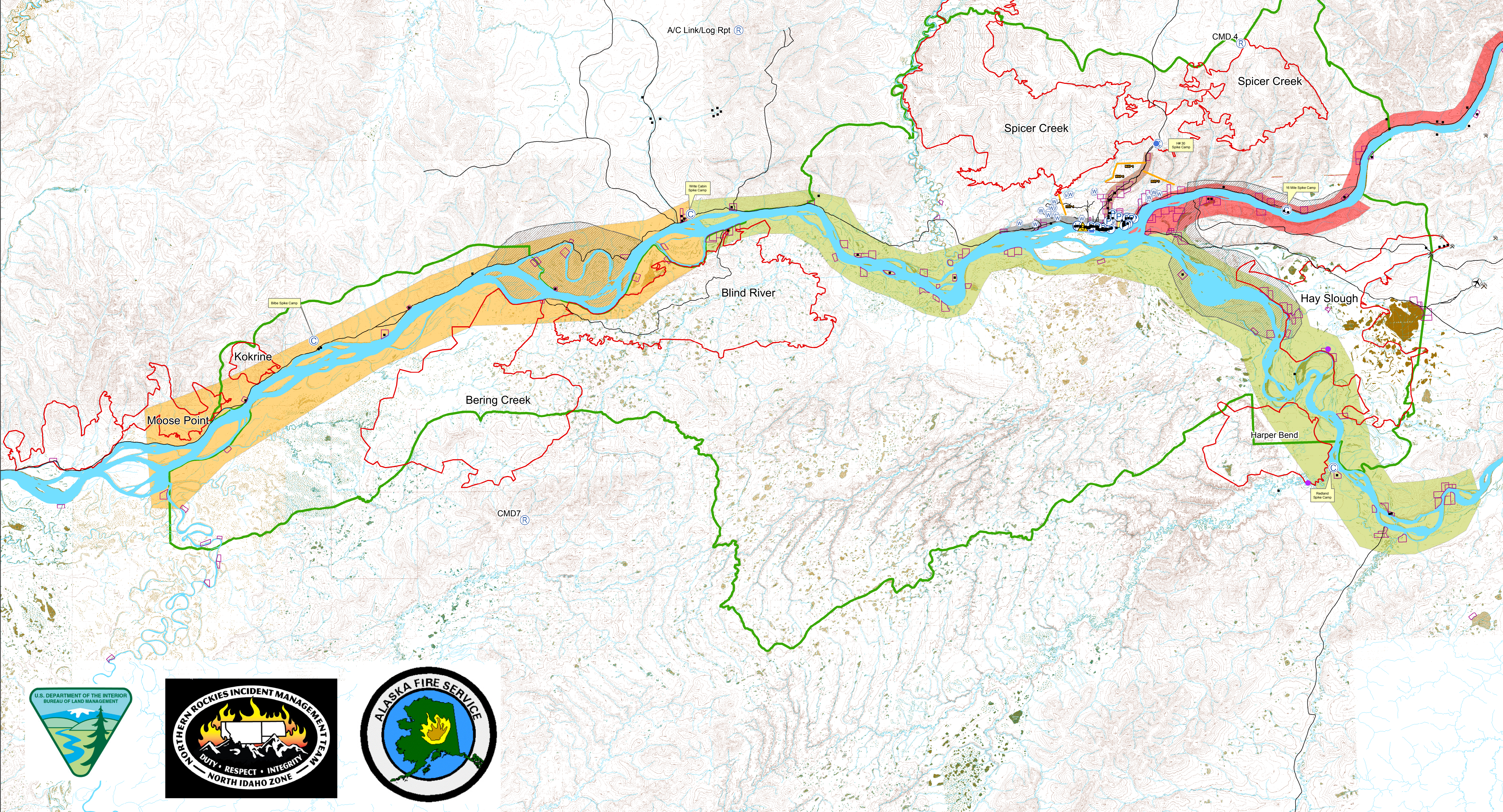
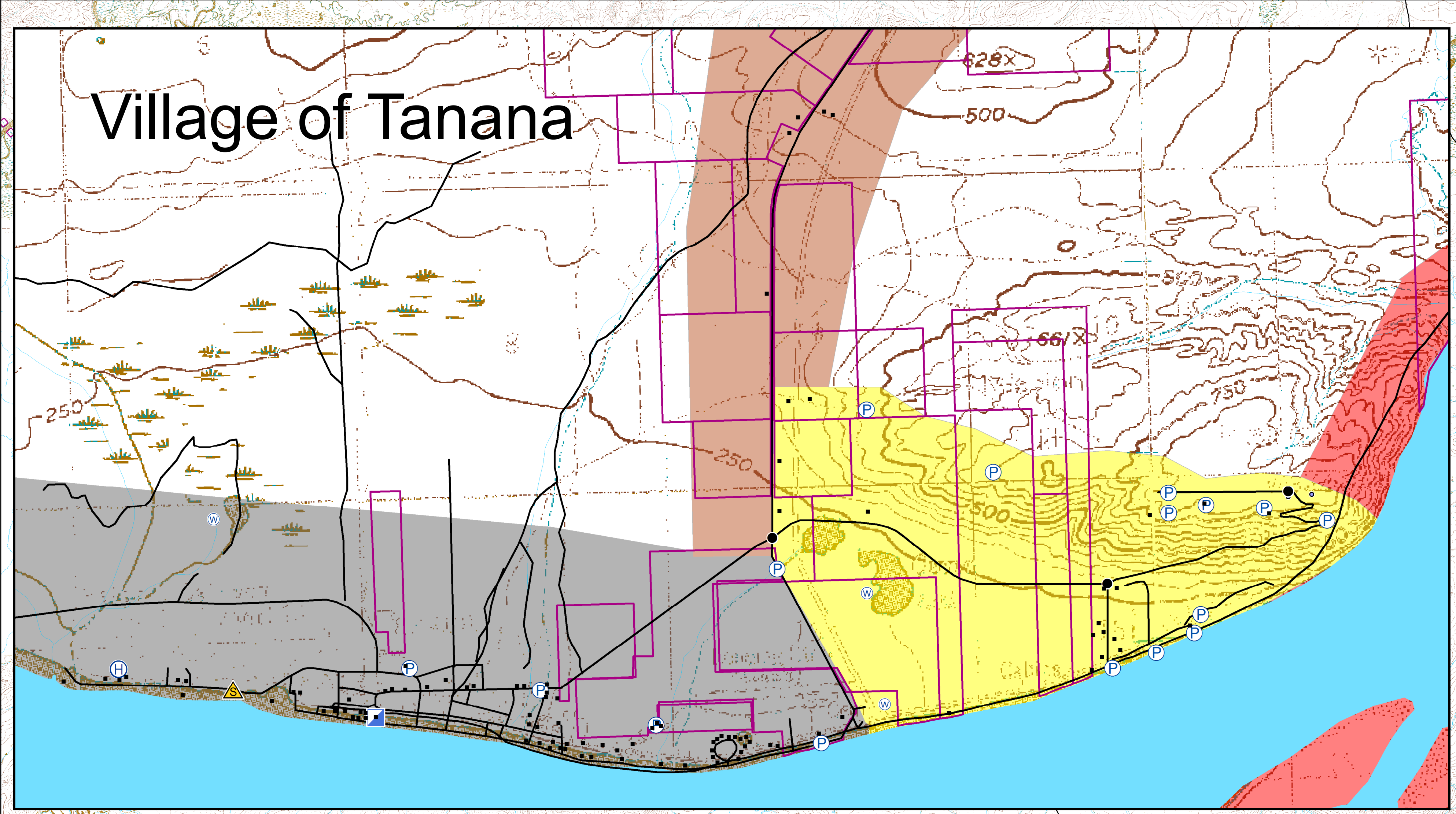


Approx acre

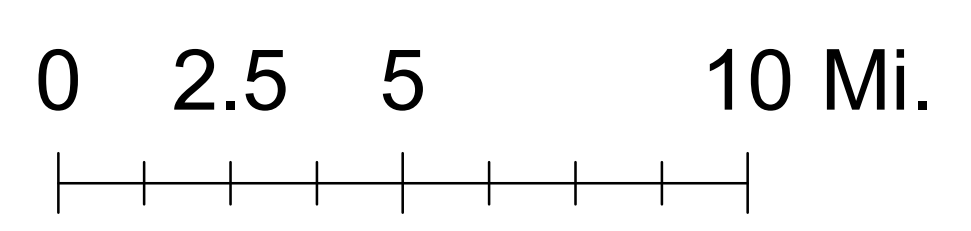
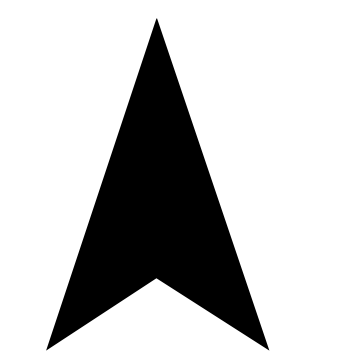
- Spicer Creek - 109,627
- Hay Slough - 44,750
- Harper Bend - 22,760
- Blind River - 57,590
- Bering Creek - 71,285
- Kokrine - 4,811
- Moose Point - 23,761

Briefing Map

- Structure
 - Ⓒ Camp
 - Drop Point
 - Ⓔ Helibase
 - Helispot
 - ▣ Incident Command Post
 - ⒫ Pump
 - Ⓔ Repeater
 - Ⓔ Water Source
 - Other
 - ⊘ Completed Dozer Line
 - Completed Line
 - ⊘ Hand Line
 - Road
 - ▨ Bear Area
 - ▭ Allotment
 - ▭ Fire Perimeter
 - ▭ Initial Attack Boundary
 - ▭ Lake/River
- Division**
- ▭ Harper Bend
 - ▭ Mission Group
 - ▭ Misson Point
 - ▭ Site Group
 - ▭ Tanana Group
 - ▭ Upper Yukon



N



Prepared by:
 Northern Rockies N-ID Team 1
 July 7, 2015 2200 hrs