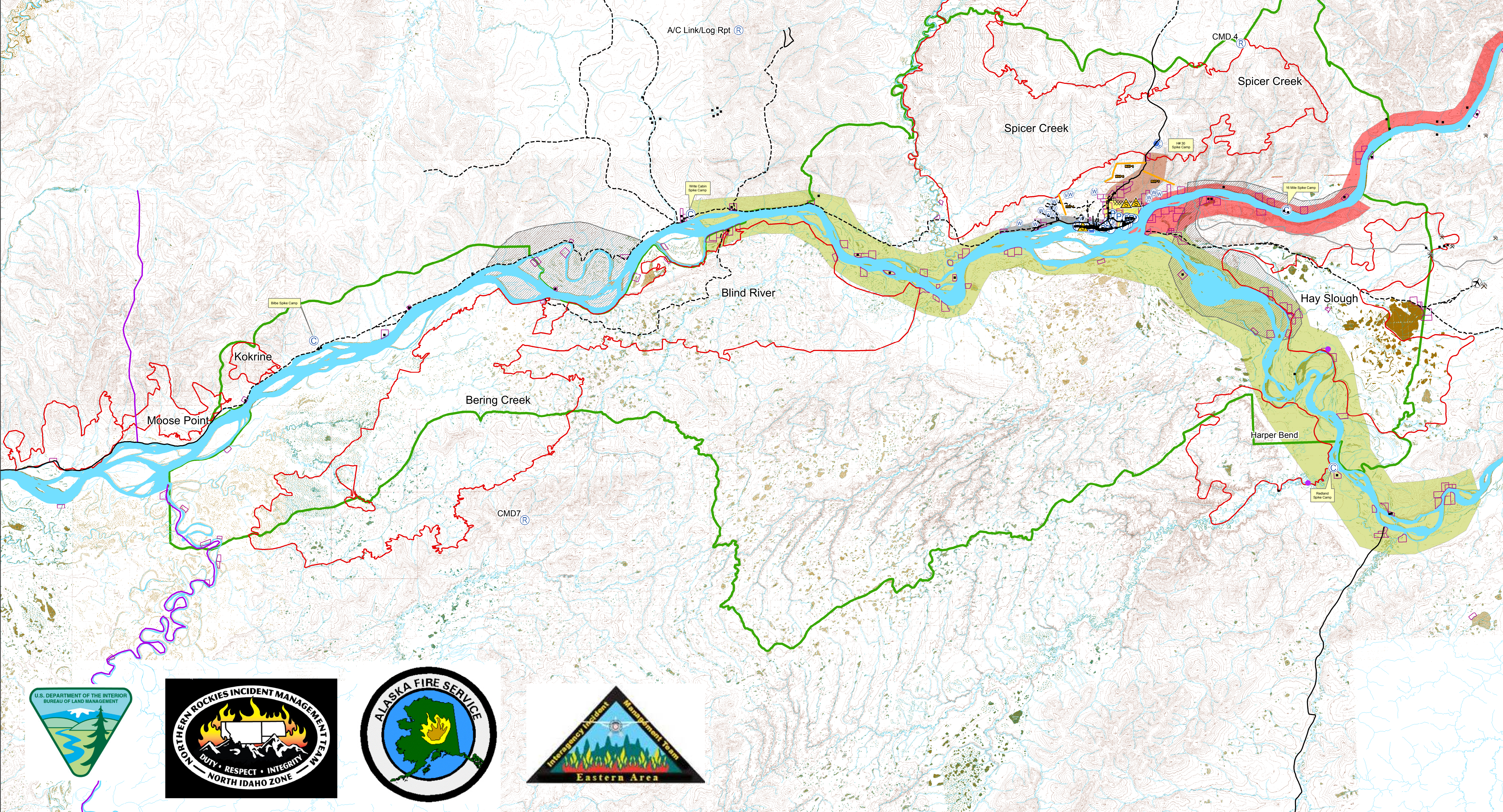
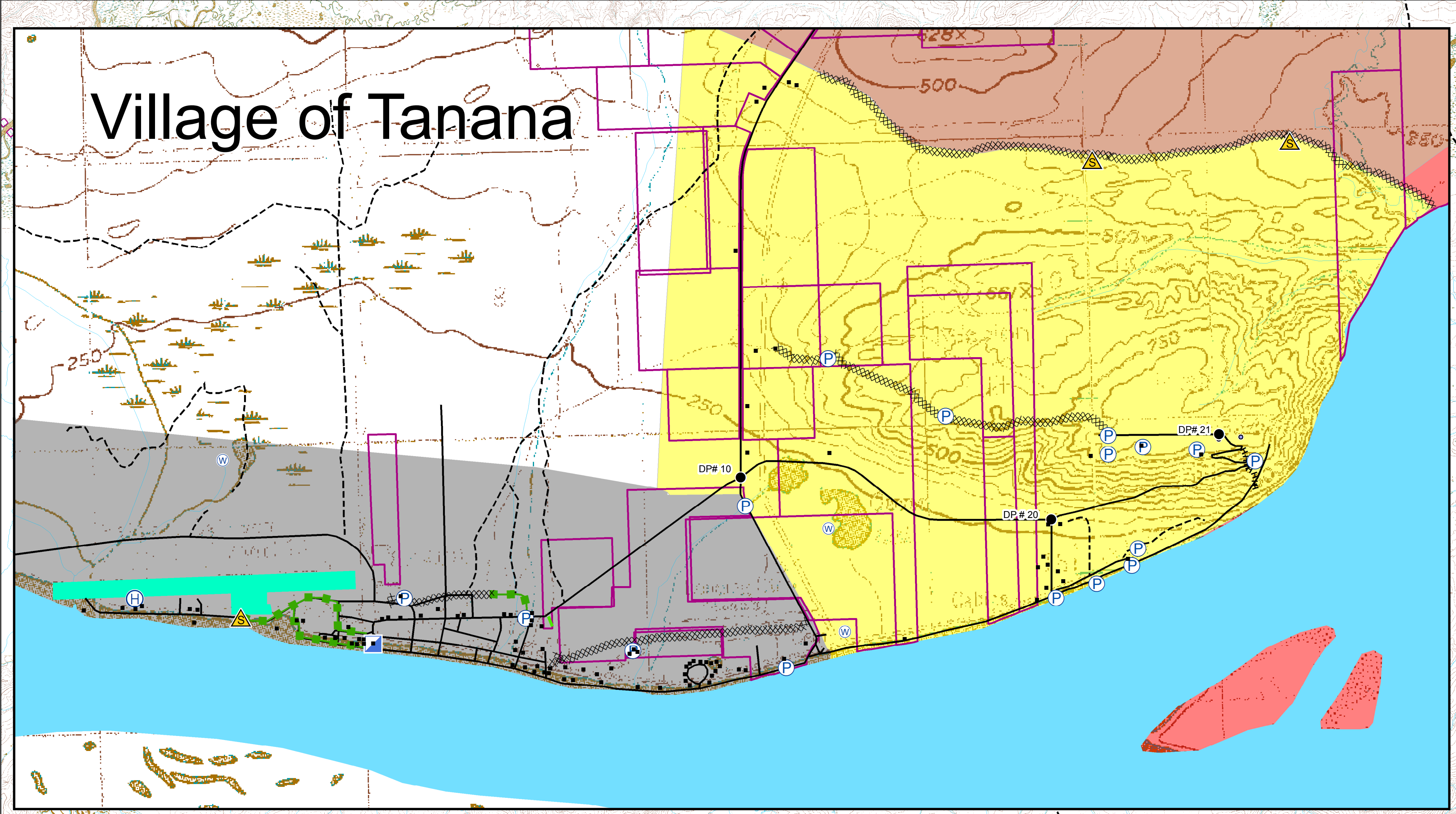


Approx acre

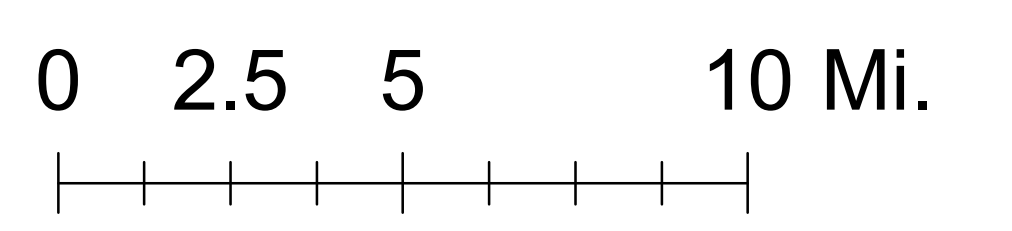
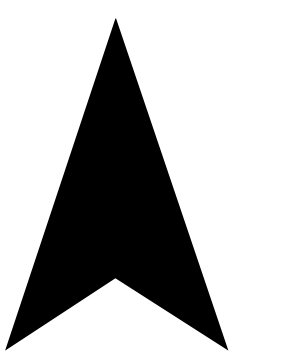
- Spicer Creek - 142,544
- Hay Slough - 72,927
- Harper Bend - 35,123
- Bering Creek - 227,002
- Kokrine - 4,811
- Moose Point - 23,761

Briefing Map

- Structure
- Ⓒ Camp
- Drop Point
- Ⓜ Helibase
- Helispot
- ▢ Incident Command Post
- Ⓟ Pump
- Ⓡ Repeater
- Ⓢ Water Source
- Other
- ▬▬▬▬▬ Completed Dozer Line
- ▬▬▬▬▬ Completed Line
- ▬▬▬▬▬ Hand Line
- ▬▬▬▬▬ Road
- ▬▬▬▬▬ Trail
- ▬▬▬▬▬ Under Construction
- ▬▬▬▬▬ Western Boundary
- ▬▬▬▬▬ Management Action Plan
- ▨ Bear Area
- ▭ Allotment
- ▭ Fire Perimeter
- ▭ Initial Attack Boundary
- ▭ Airport
- Group**
- ▭ Harper Bend
- ▭ Mission Group
- ▭ Moose Point
- ▭ Site Group
- ▭ Tanana Group
- ▭ Upper Yukon



N



Prepared by:
 Northern Rockies N-ID Team 1
 July 10, 2015 2200 hrs

