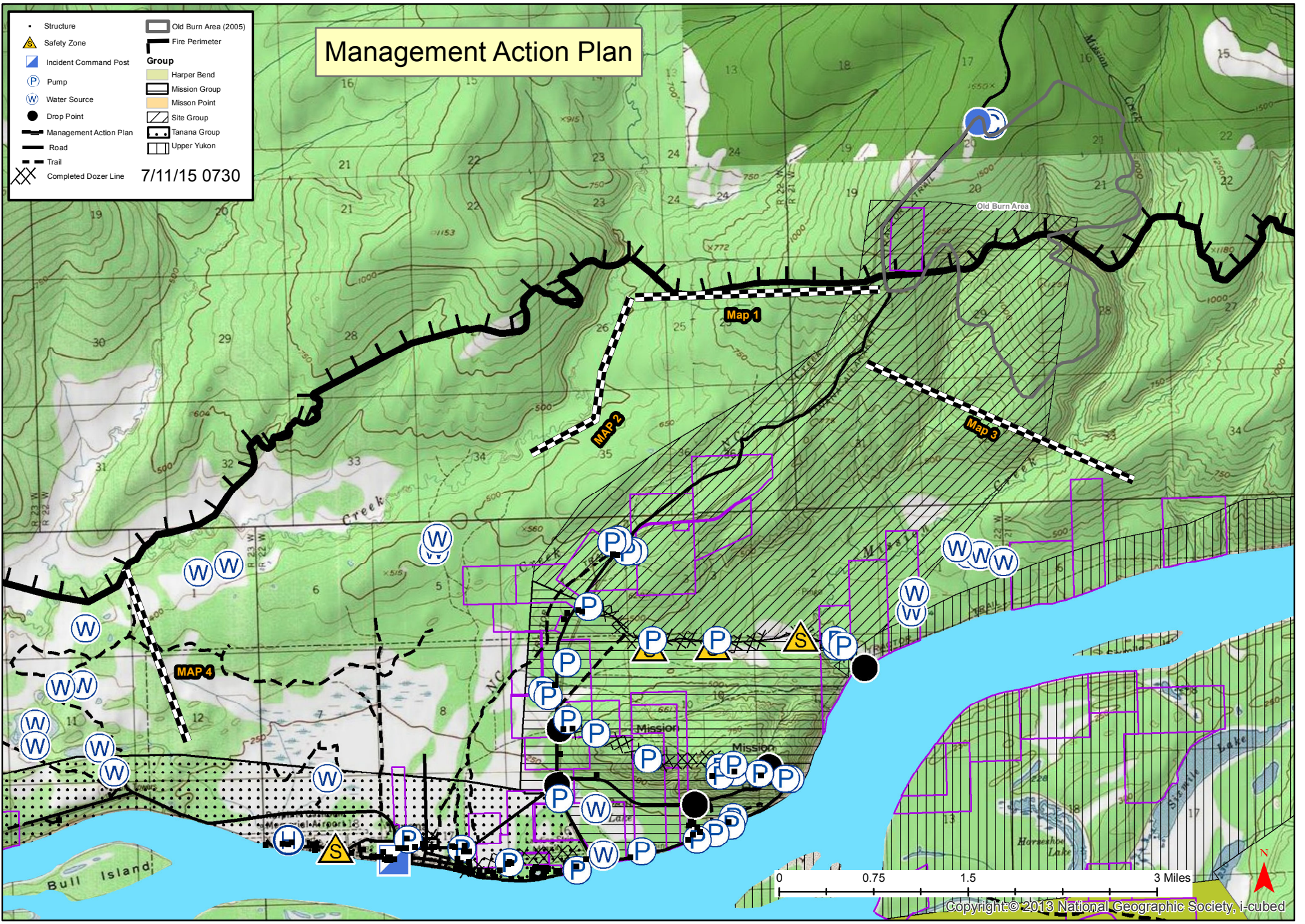


Management Action Plan

• Structure	▭ Old Burn Area (2005)
▲ Safety Zone	▭ Fire Perimeter
▢ Incident Command Post	▭ Harper Bend
⊙ Pump	▭ Mission Group
⊙ Water Source	▭ Mission Point
● Drop Point	▭ Site Group
▬ Management Action Plan	▭ Tanana Group
▬ Road	▭ Upper Yukon
▬ Trail	
⊗ Completed Dozer Line	

7/11/15 0730



Tozitna- Spicer Fire Management Action Plan (MAP's) 7-5-2015

These Management Action Plans are established in conjunction with the Tanana Village Structure Protection Plan established June 23, 2015.

When Fire Behavior becomes extreme and threatens structures in the Village of Tanana, along Site Rd and the Mission Ridge rd. consider and evaluate tactical actions needed to prevent property loss and provide public safety.

Line Operations will contact Planning Operations and IC immediately when MAP's have been reached and any actions will come down through the chain of command. IC will notify Village Public Safety Officer of specific management action points that have been reached so VPSO can advise Tanana residents of our actions for appropriate action. IC / OPS2 will advise PIO2 & LOFR of actions, so public service announcements can be released.

Contact the Tanana Power Co. at 907-366-1190 before any firing operations, imminent impacts from the fire and locations for possible de-charging of specific lines for safety.

Management Action Plan # 1,2,4

- a) If fire establishes beyond any of these points and fire behavior indicates addition growth; Evaluate the need to implement the Structure Protection Plan along west side of Site Rd. Water handling systems will be charged and maintained until fire threat to structures has passed. Consider the need to implement by severity of Fire Behavior threat.
- b) Consider using aerial support including Air Tankers /Scoopers if conditions allow for safe and effect utilization of that resource.
- c) Start firing around structures systematically to provide for Public Safety and structure protection. If Extreme Fire Behavior becomes established, pumps will be fueled and left to run. Crews will pull back to the pre-established safety zone and wait until its safe to return to the structures. Once fire front subsides, crews will reengage in structure protection.

Management Action Plan # 3

- a) If fire establishes beyond any of these points and fire behavior indicates addition growth; evaluate the need to implement the Structure Protection Plan along east side of Site Rd. and Mission Ridge. North of Dozer line that extends from Site Rd to Mission Ridge, firing will be evaluated as we determine the threat and imminent danger to the public. Water handling systems will be charged and maintained until fire threat to structures has passed. Consider the need to implement by severity of Fire Behavior threat.
- b) Consider using aerial support including Air Tankers and or Scoopers if conditions allow for safe and effect utilization of that resource. Start firing around structures systematically to provide for Public Safety and structure protection. If Extreme Fire Behavior becomes established, pumps will be fueled and left to run. Crews will pull back to the pre-established safety zone and wait until its safe to return to the structures. Once fire front subsides, crews will reengage in structure protection.