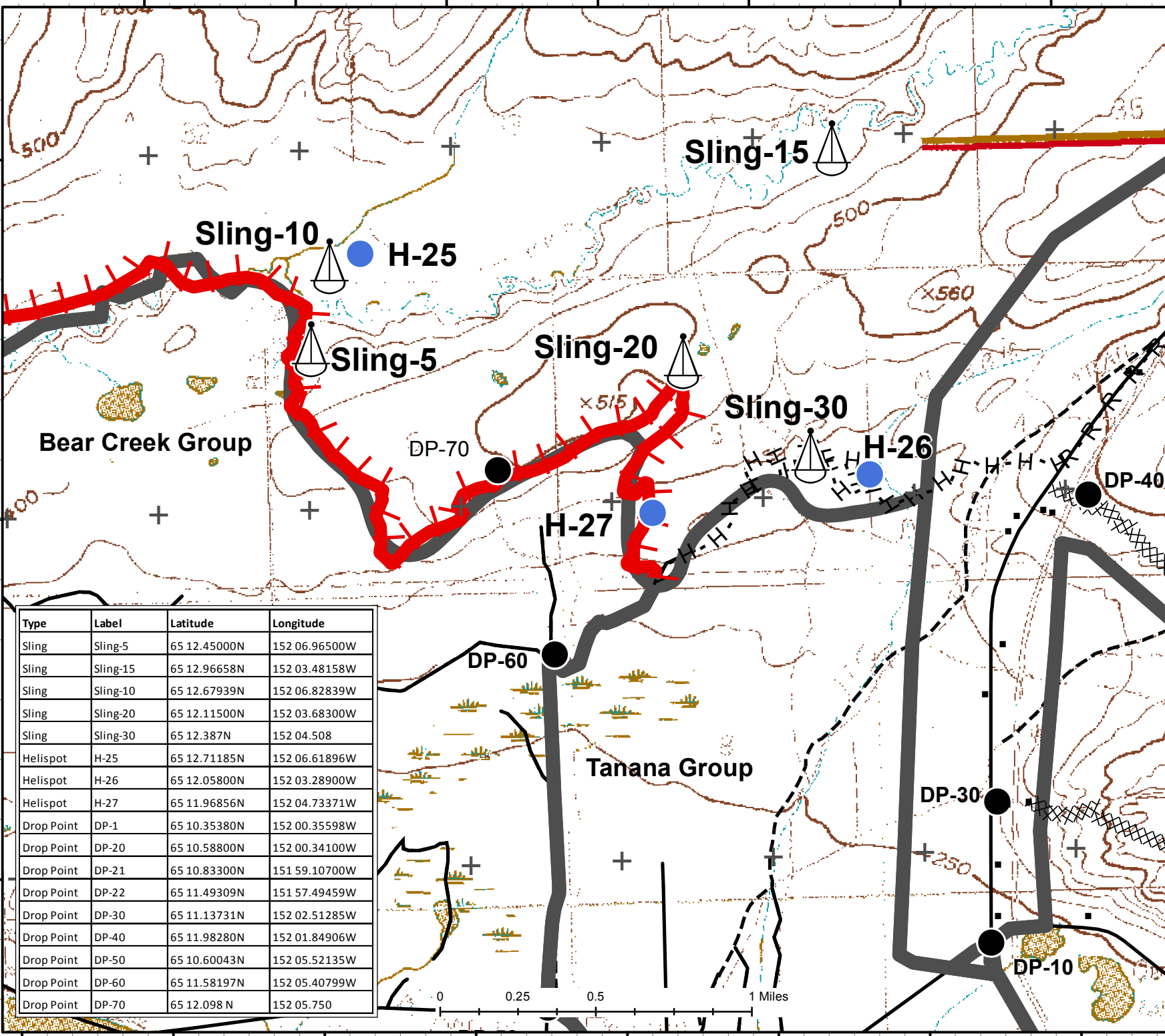


152°8'W 152°7'W 152°6'W 152°5'W 152°4'W 152°3'W 152°2'W

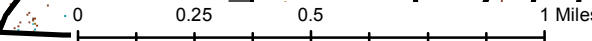
Tanana Area Fires
 AK-TAD-000898
 PJS7J
 Aviation Map
 July 20, 2015
 1:36,000

65°13'N
 65°12'N
 65°11'N



- Legend**
- Structure
 - Drop Point
 - Helispot
 - ⚓ Sling Site
 - 🔴 Uncontrolled Fire Edge
 - ⊗ Completed Dozer Line
 - H - Hand Line
 - R - Road as Completed Line
 - ▬ Division
 - ▬ Roads
 - - - Trail

Type	Label	Latitude	Longitude
Sling	Sling-5	65 12.45000N	152 06.96500W
Sling	Sling-15	65 12.96658N	152 03.48158W
Sling	Sling-10	65 12.67939N	152 06.82839W
Sling	Sling-20	65 12.11500N	152 03.68300W
Sling	Sling-30	65 12.387N	152 04.508
Helispot	H-25	65 12.71185N	152 06.61896W
Helispot	H-26	65 12.05800N	152 03.28900W
Helispot	H-27	65 11.96856N	152 04.73371W
Drop Point	DP-1	65 10.35380N	152 00.35598W
Drop Point	DP-20	65 10.58800N	152 00.34100W
Drop Point	DP-21	65 10.83300N	151 59.10700W
Drop Point	DP-22	65 11.49309N	151 57.49459W
Drop Point	DP-30	65 11.13731N	152 02.51285W
Drop Point	DP-40	65 11.98280N	152 01.84906W
Drop Point	DP-50	65 10.60043N	152 05.52135W
Drop Point	DP-60	65 11.58197N	152 05.40799W
Drop Point	DP-70	65 12.098 N	152 05.750



Map Prepared by:
 Eastern Area IMT
 NAD 83 AK Albers
 17°East Declination
 July 19, 2015 2110 hrs

152°9'W 152°8'W 152°7'W 152°6'W 152°5'W 152°4'W 152°3'W 152°2'W