

Tanana Area Fires
 AK-TAD-000898
 PDJS7J
 July 19, 2015

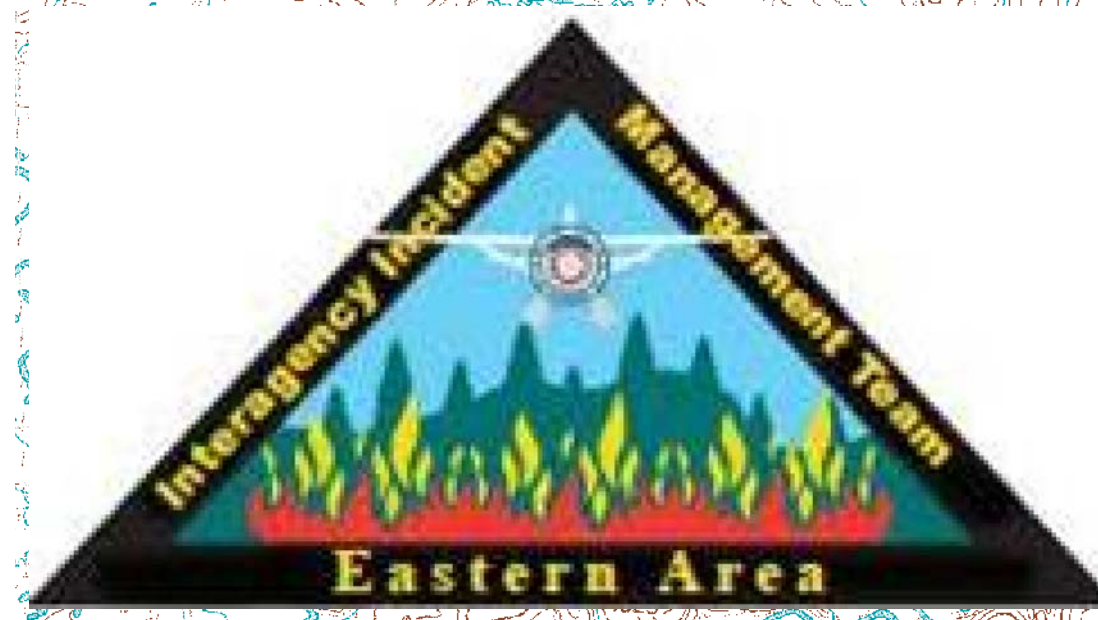
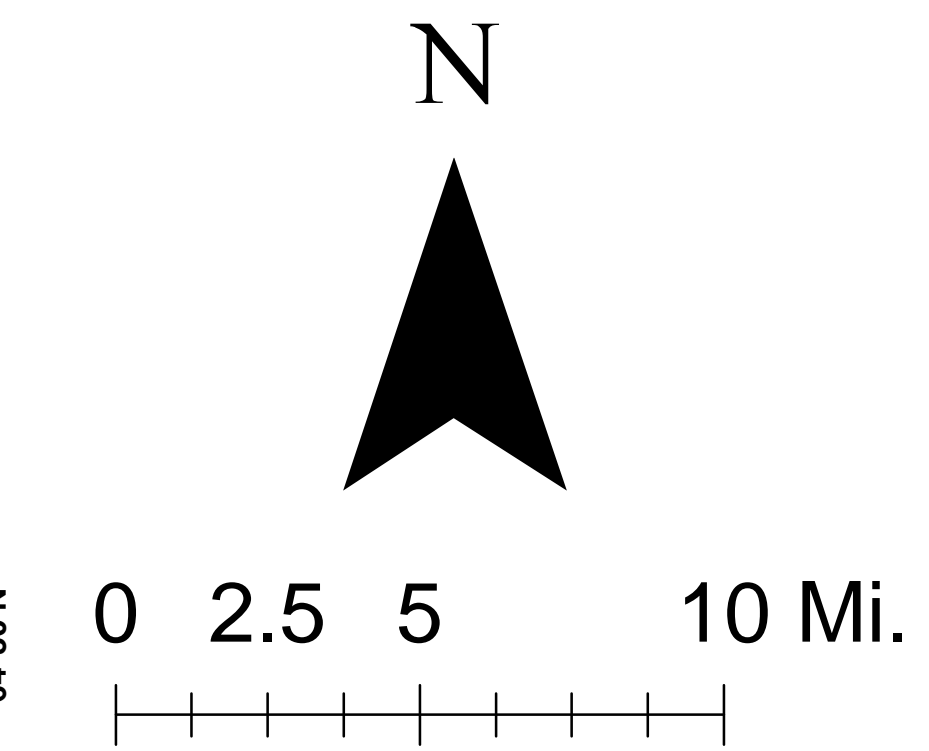
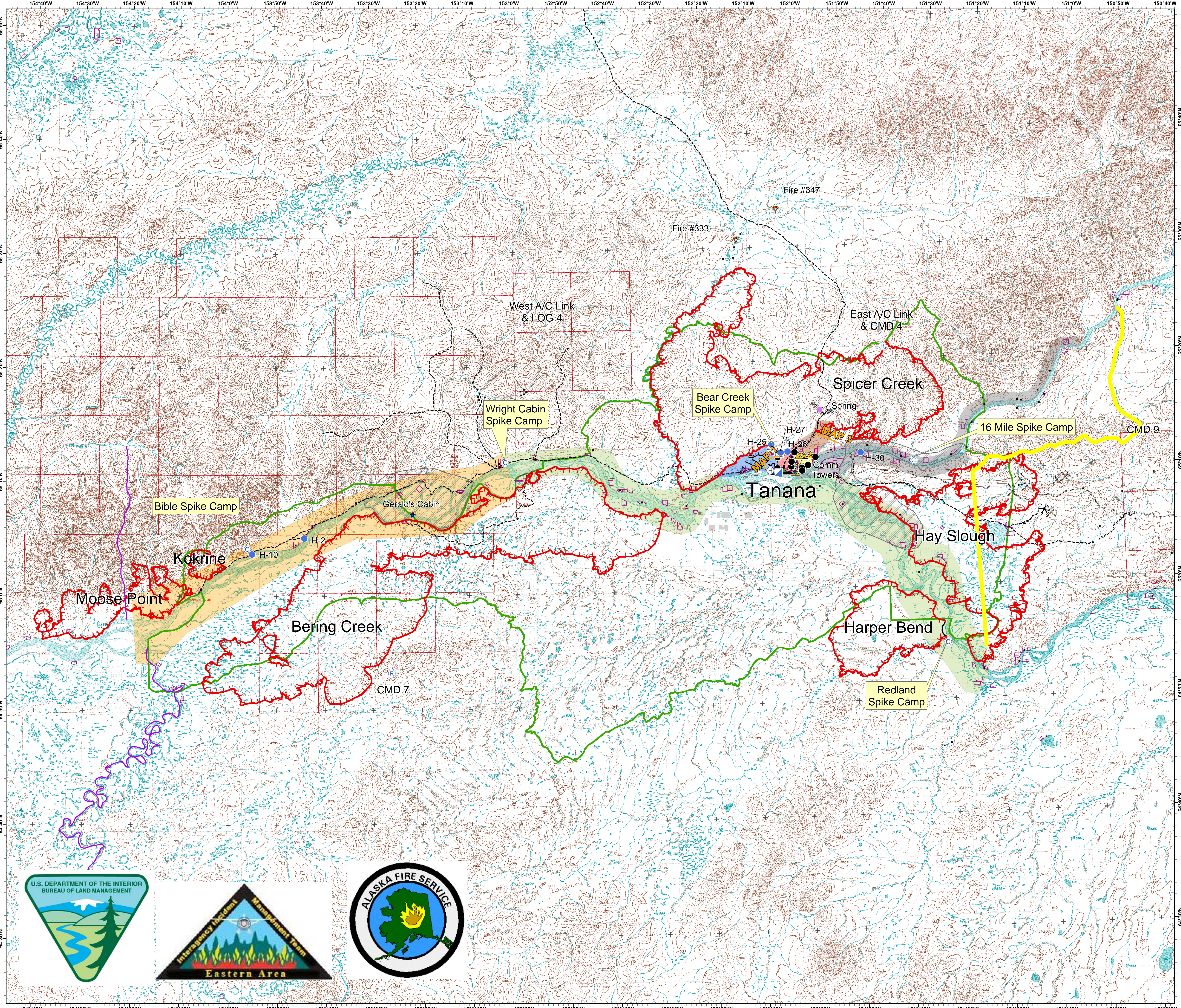
Approximate Acres

- Bering Creek - 233,840
- Spicer Creek - 176,714
- Moose Point - 26,414
- Harper Bend - 43,169
- Kokrine - 4,811

Briefing Map

Legend

- Smokejumper Location
 - Unimproved Landing Site
 - Camp
 - Drop Point
 - Helibase
 - Helispot
 - Incident Command Post
 - Repeater
 - Safety Zone
 - Sling Site
 - Other
 - Uncontrolled Fire Edge
 - Completed Dozer Line
 - Completed Line
 - Hand Line
 - Road as Completed Line
 - Escape Route
 - Management Action Plan
 - Western Boundary
 - IMT Zone Split
 - Road
 - Trail
 - Under Construction
 - Bear Area
 - Allotment
 - Initial Attack Boundary
- Groups**
- Bear Creek Group
 - Harper Bend Group
 - Mission Group
 - Moose Point Group
 - Site Group
 - Tanana Group
 - Upper Yukon Group



Prepared by:
 Eastern Area IMT
 July 18, 2015 2258 hrs
 NAD83 AK Albers