

Tanana Area Fires AK-TAD-000898 Spicer Creek Operations Map July 21, 2015 1:24000

Spicer Fire Management Action Points (MAP's) 7-12-2015

These Management Action Points are established in conjunction with the Tanana Village Structure Protection Plan established June 23, 2015, and modified 7/12/2015.

When Fire Behavior becomes extreme and threatens structures in the Village of Tanana, along Site Rd and the Mission Ridge rd, consider and evaluate tactical actions needed to prevent property loss and provide public safety.

Line Operations will contact Planning Operations and IC immediately when MAP's have been reached and any actions will come down through the chain of command. IC or designated representative will notify Village Public Safety Officer of specific management action points that have been reached so VPSO can advise Tanana residents of our actions for their appropriate action. IC / OPS2 will advise PIO2 & LOFS of actions, so public service announcements can be released.

Contact the Tanana Power Co. at 907-366-1190 before any firing operations, imminent impacts from the fire and locations for possible de-charging of specific lines for safety.

Management Action Point # 1

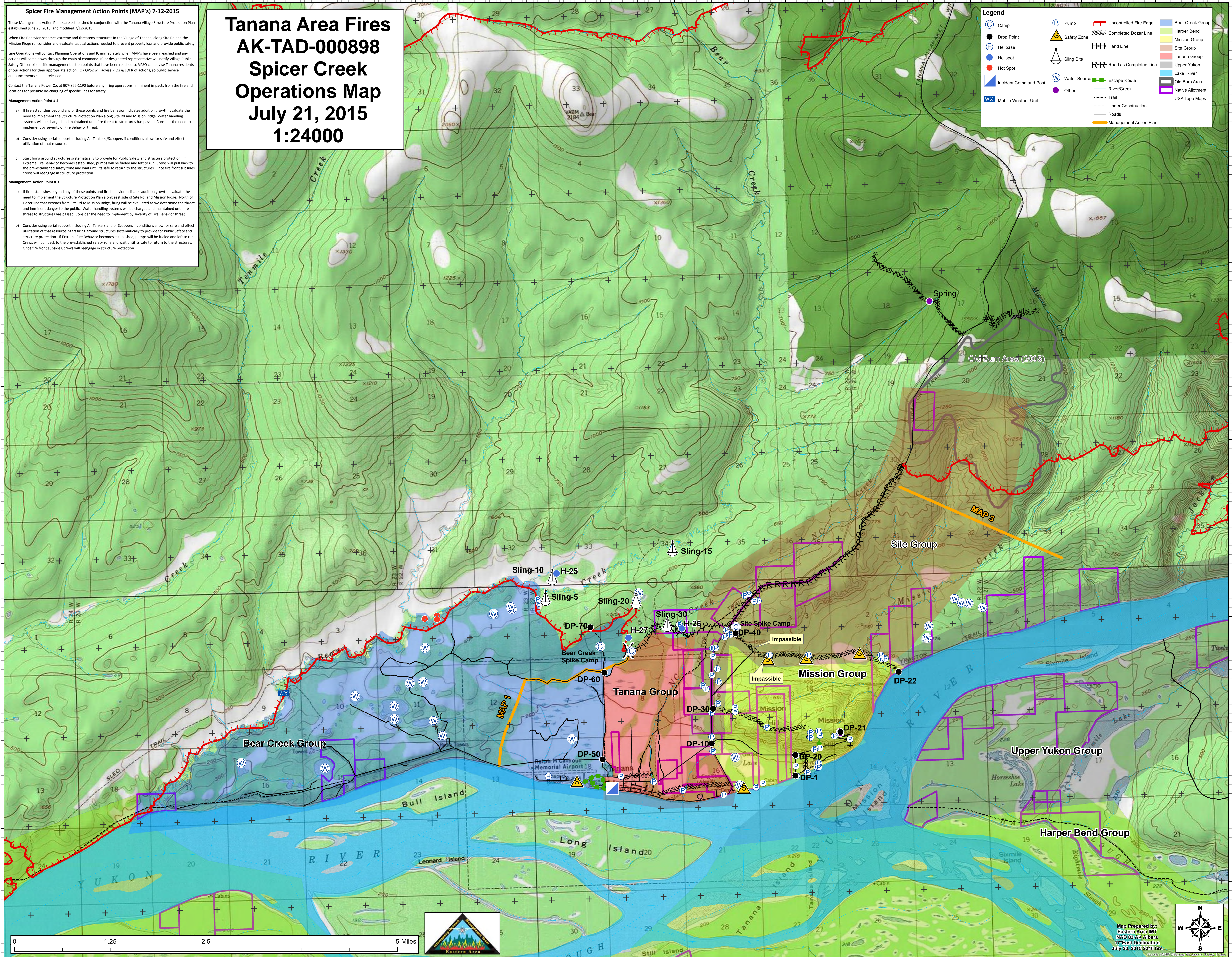
- If fire establishes beyond any of these points and fire behavior indicates addition growth; Evaluate the need to implement the Structure Protection Plan along Site Rd and Mission Ridge. Water handling systems will be charged and maintained until fire threat to structures has passed. Consider the need to implement by severity of Fire Behavior threat.
- Consider using aerial support including Air Tankers /Scoppers if conditions allow for safe and effect utilization of that resource.
- Start firing around structures systematically to provide for Public Safety and structure protection. If Extreme Fire Behavior becomes established, pumps will be fueled and left to run. Crews will pull back to the pre-established safety zone and wait until its safe to return to the structures. Once fire front subsides, crews will reengage in structure protection.

Management Action Point # 3

- If fire establishes beyond any of these points and fire behavior indicates addition growth; evaluate the need to implement the Structure Protection Plan along east side of Site Rd, and Mission Ridge. North of Dowe line that extends from Site Rd to Mission Ridge, firing will be evaluated as we determine the threat and imminent danger to the public. Water handling systems will be charged and maintained until fire threat to structures has passed. Consider the need to implement by severity of Fire Behavior threat.
- Consider using aerial support including Air Tankers and or Scoppers if conditions allow for safe and effect utilization of that resource. Start firing around structures systematically to provide for Public Safety and structure protection. If Extreme Fire Behavior becomes established, pumps will be fueled and left to run. Crews will pull back to the pre-established safety zone and wait until its safe to return to the structures. Once fire front subsides, crews will reengage in structure protection.

Legend

Camp	Pump	Uncontrolled Fire Edge	Bear Creek Group
Drop Point	Safety Zone	Completed Dozer Line	Harper Bend
Helibase	Sling Site	Hand Line	Mission Group
Helispot	Water Source	Road as Completed Line	Tanana Group
Hot Spot	Escape Route	Trail	Upper Yukon
Incident Command Post	River/Creek	Under Construction	Lake, River
Mobile Weather Unit	Other	Roads	Old Burn Area
		Management Action Plan	Native Allotment
			USA Topo Maps



Map Prepared by:
Eastern Area IMT
NAD 83 AK Albers
17 East Declination
July 20, 2015 2246 hrs

