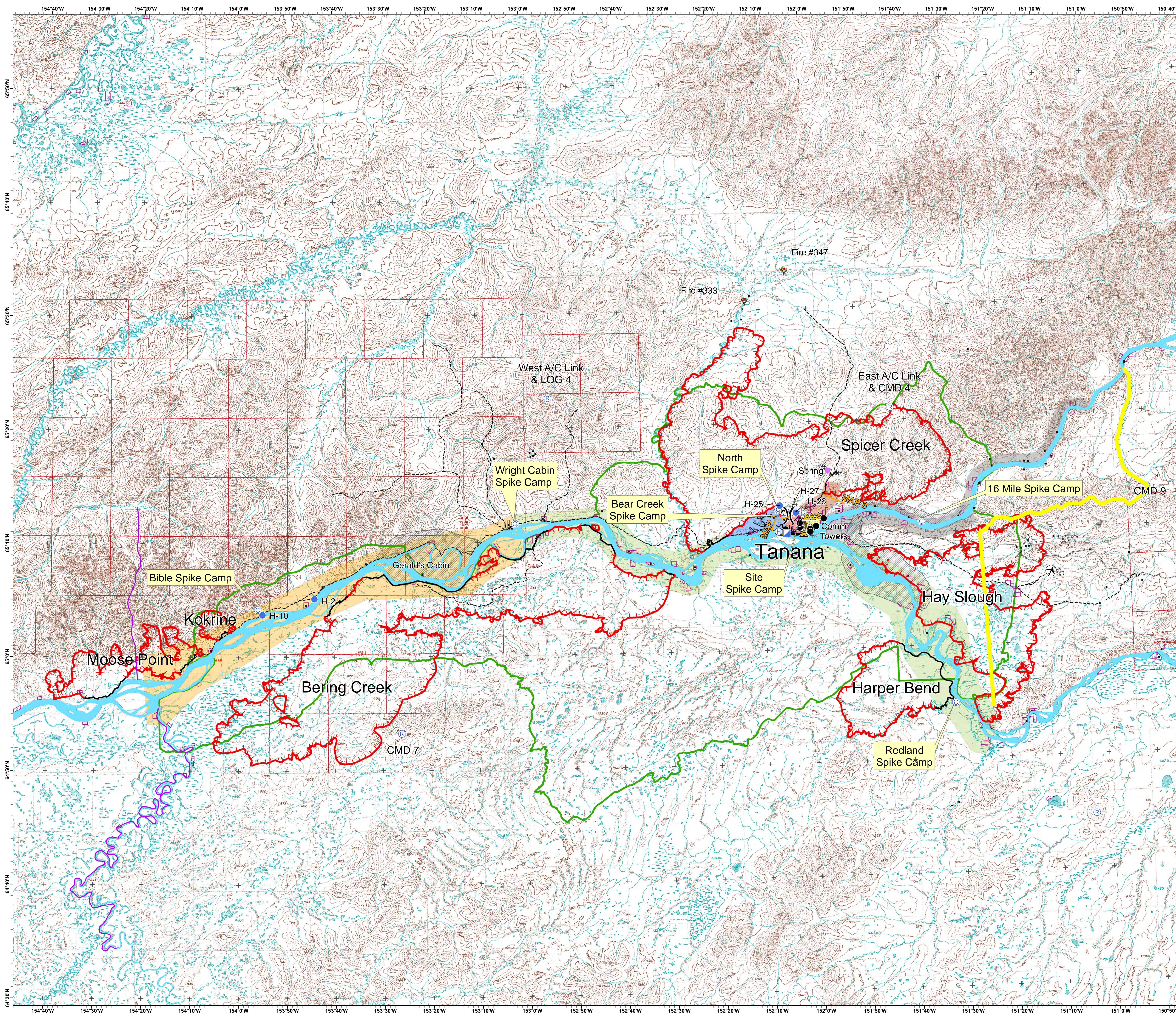


Tanana Area Fires
 AK-TAD-000898
 PDJS7J
 July 22, 2015

Approximate Acres

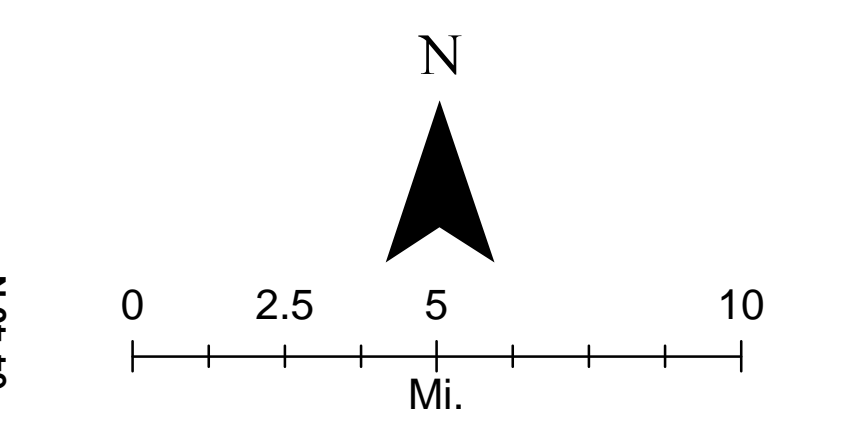
Bering Creek - 235,970
 Spicer Creek - 178,082
 Moose Point - 26,414
 Harper Bend - 43,270
 Kokrine - 4,811

Briefing Map



Legend

- Smokejumper Location
- Incident Command Post
- Helibase
- Helispot
- Camp
- Drop Point
- Repeater
- Safety Zone
- Sling Site
- Other
- Uncontrolled Fire Edge
- Completed Dozer Line
- Completed Line
- Hand Line
- Road as Completed Line
- Escape Route
- Management Action Plan
- Western Boundary
- IMT Zone Split
- Allotment
- Road
- Trail
- Under Construction
- Initial Attack Boundary
- Bear Area
- Groups**
- Bear Creek Group
- Harper Bend Group
- Mission Group
- Moose Point Group
- Site Group
- Tanana Group
- Upper Yukon Group



Prepared by:
 Eastern Area IMT
 July 21, 2015 2036 hrs
 NAD83 AK Albers
 17° East Declination