

# Tanana Area Fires AK-TAD-000898 Spicer Creek Operations Map July 25, 2015 1:24000

**Spicer Fire Management Action Points (MAP's) 7-12-2015**

These Management Action Points are established in conjunction with the Tanana Village Structure Protection Plan established June 23, 2015, and modified 7/12/2015.

When Fire Behavior becomes extreme and threatens structures in the Village of Tanana, along Site Rd and the Mission Ridge rd, consider and evaluate tactical actions needed to prevent property loss and provide public safety.

Line Operations will contact Planning Operations and IC immediately when MAP's have been reached and any actions will come down through the chain of command. IC or designated representative will notify Village Public Safety Officer of specific management action points that have been reached so VPSO can advise Tanana residents of our actions for their appropriate action. IC / OPS2 will advise PIO2 & LOFS of actions, so public service announcements can be released.

Contact the Tanana Power Co. at 907-366-1190 before any firing operations, imminent impacts from the fire and locations for possible de-charging of specific lines for safety.

**Management Action Point # 1**

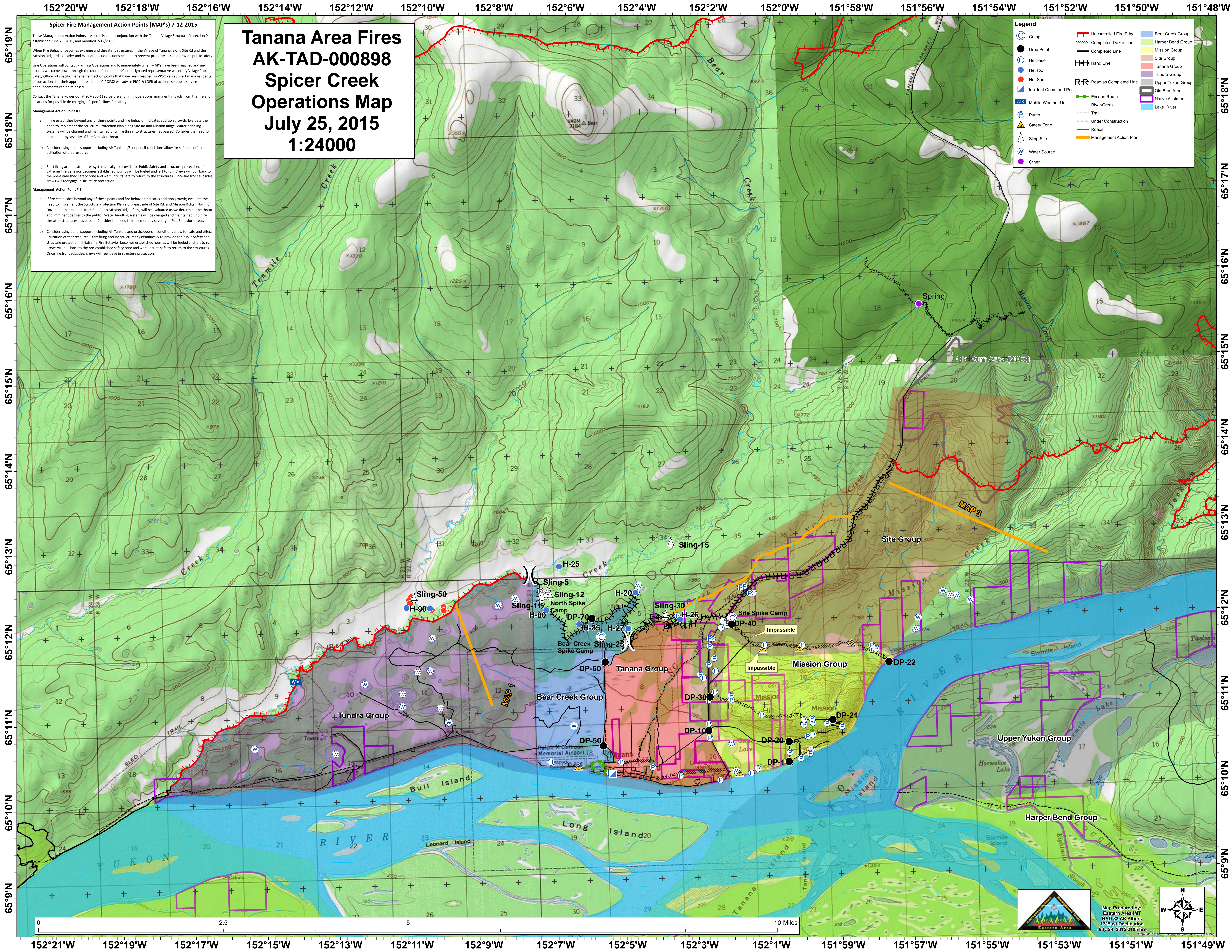
- If fire establishes beyond any of these points and fire behavior indicates addition growth; Evaluate the need to implement the Structure Protection Plan along Site Rd and Mission Ridge. Water handling systems will be charged and maintained until fire threat to structures has passed. Consider the need to implement by severity of Fire Behavior threat.
- Consider using aerial support including Air Tankers /Scoppers if conditions allow for safe and effect utilization of that resource.
- Start firing around structures systematically to provide for Public Safety and structure protection. If Extreme Fire Behavior becomes established, pumps will be fueled and left to run. Crews will pull back to the pre-established safety zone and wait until its safe to return to the structures. Once fire front subsides, crews will reengage in structure protection.

**Management Action Point # 3**

- If fire establishes beyond any of these points and fire behavior indicates addition growth; evaluate the need to implement the Structure Protection Plan along east side of Site Rd, and Mission Ridge. North of Dowe line that extends from Site Rd to Mission Ridge, firing will be evaluated as we determine the threat and imminent danger to the public. Water handling systems will be charged and maintained until fire threat to structures has passed. Consider the need to implement by severity of Fire Behavior threat.
- Consider using aerial support including Air Tankers and or Scoppers if conditions allow for safe and effect utilization of that resource. Start firing around structures systematically to provide for Public Safety and structure protection. If Extreme Fire Behavior becomes established, pumps will be fueled and left to run. Crews will pull back to the pre-established safety zone and wait until its safe to return to the structures. Once fire front subsides, crews will reengage in structure protection.

**Legend**

	Uncontrolled Fire Edge		Bear Creek Group
	Completed Dozer Line		Harper Bend Group
	Completed Line		Mission Group
	Hand Line		Site Group
	Road as Completed Line		Tanana Group
	Escape Route		Tundra Group
	River/Creek		Upper Yukon Group
	Trail		Old Burn Area
	Under Construction		Native Allotment
	Roads		Lake_River
	Management Action Plan		



Map Prepared by:  
Eastern Area-IMT  
NAD 83 AK Albers  
17 East Declination  
July 24, 2015 2105 hrs