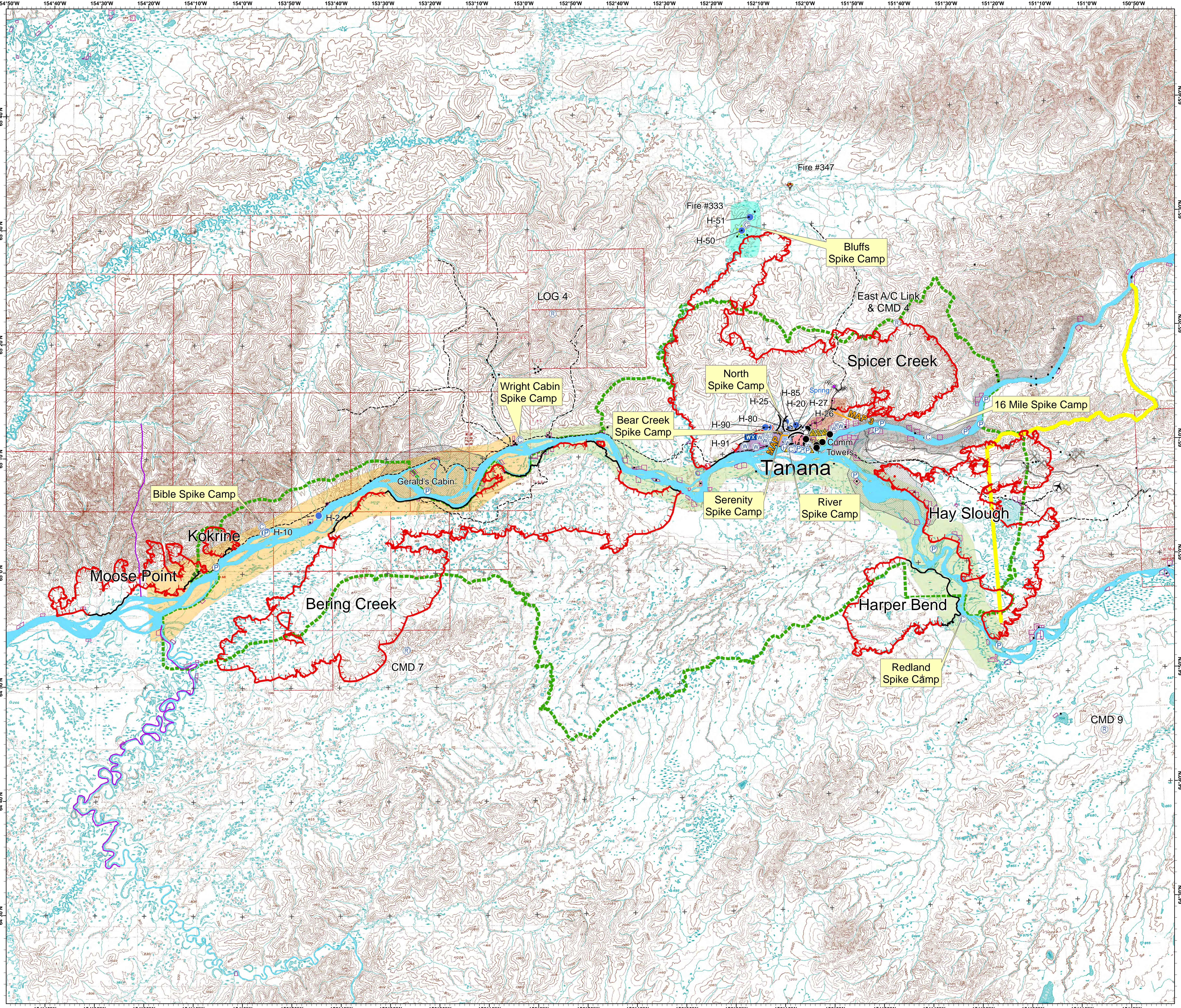


Tanana Area Fires
AK-TAD-000898
PDJS7J

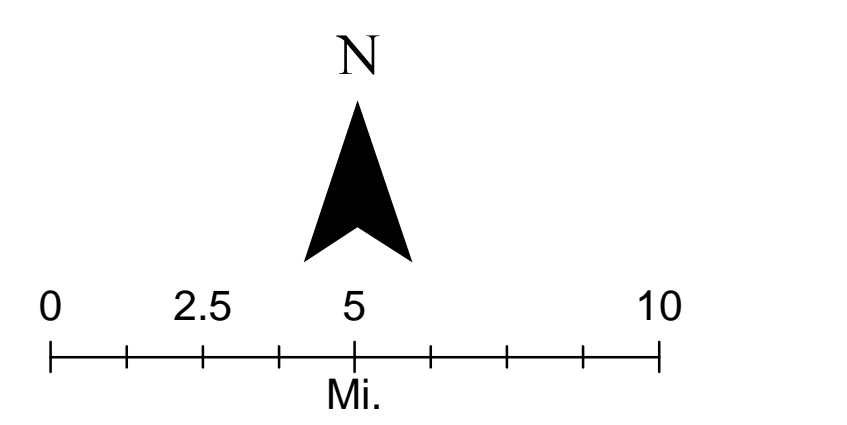
Approximate Acres

- Bering Creek - 237,906
- Spicer Creek - 183,415
- Moose Point - 26,612
- Harper Bend - 43,387
- Kokrine - 4,811

Briefing Map



- Camp
 - Drop Point
 - Helibase
 - Helispot
 - Hot Spot
 - Incident Command Post
 - Mobile Weather Unit
 - Pump
 - Repeater
 - Safety Zone
 - Sling Site
 - Spot Fire
 - Water Source
 - Other
 - Uncontrolled Fire Edge
 - Completed Dozer Line
 - Completed Line
 - Hand Line
 - Road as Completed Line
 - Escape Route
- Comments**
- Rehab Dozer Line/Hand Line
 - Smokejumper Location
 - Rogue River IHC Location
 - Management Action Plan
 - Western Boundary
 - IMT Zone Split
 - Allotment
 - Road
 - Trail
 - Under Construction
 - Initial Attack Boundary
 - Bear Area
- Groups**
- Bear Creek Group
 - Harper Bend Group
 - Jumper Group
 - Mission Group
 - Moose Point Group
 - Site Group
 - Tanana Group
 - Tundra Group
 - Upper Yukon Group



Prepared by:
Eastern Area IMT
July 28, 2015 2000 hrs
NAD83 AK Albers
17° East Declination