





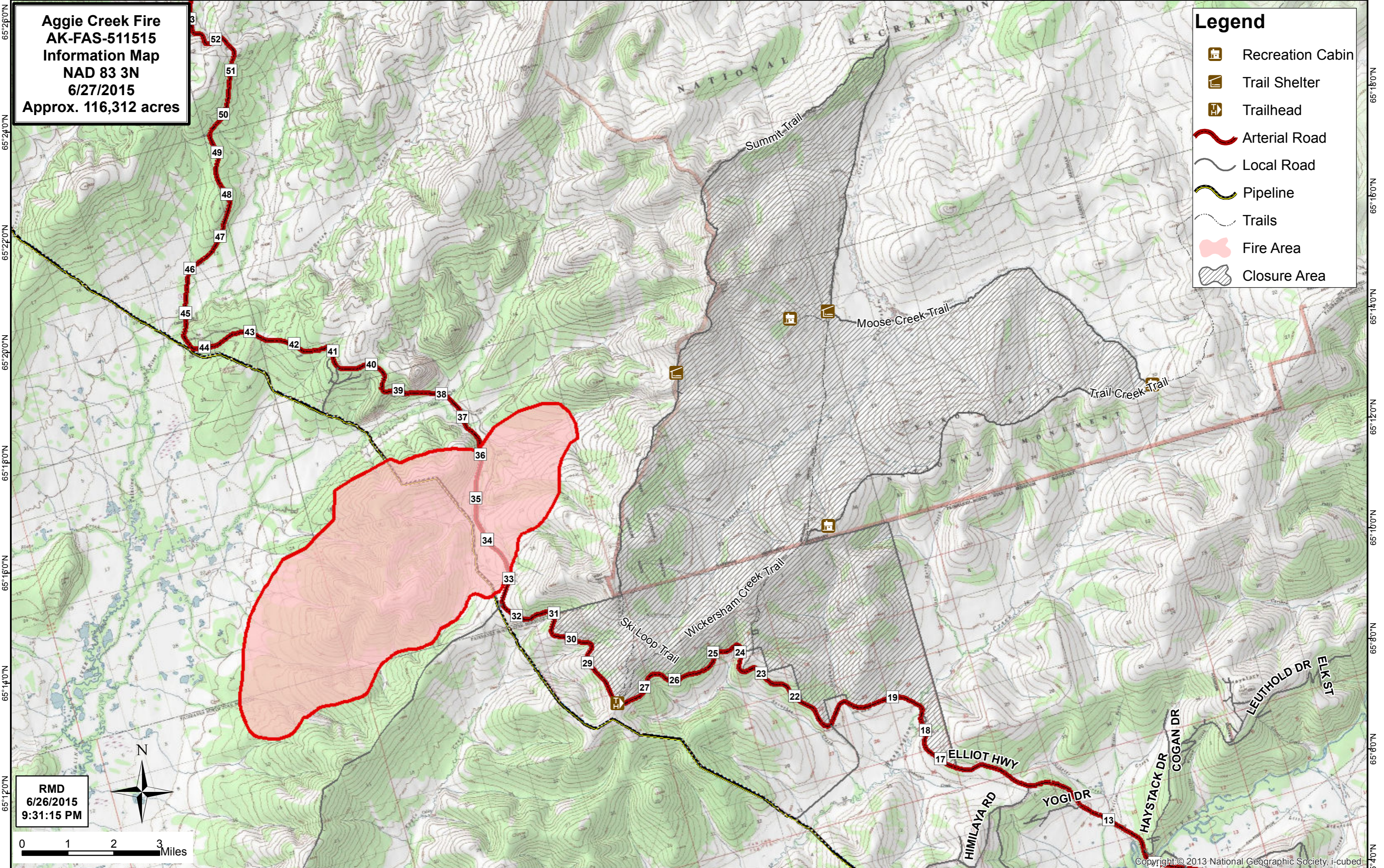


148°22'0"W 148°20'0"W 148°18'0"W 148°16'0"W 148°14'0"W 148°12'0"W 148°10'0"W 148°8'0"W 148°6'0"W 148°4'0"W 148°2'0"W 148°0'0"W 147°58'0"W 147°56'0"W 147°54'0"W 147°52'0"W 147°50'0"W 147°48'0"W 147°46'0"W 147°44'0"W 147°42'0"W 147°40'0"W 147°38'0"W 147°36'0"W 147°34'0"W 147°32'0"W 147°30'0"W 147°28'0"W 147°26'0"W 147°24'0"W

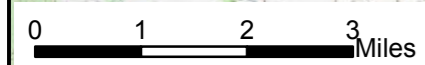
Aggie Creek Fire
AK-FAS-511515
Information Map
NAD 83 3N
6/27/2015
Approx. 116,312 acres

Legend

-  Recreation Cabin
-  Trail Shelter
-  Trailhead
-  Arterial Road
-  Local Road
-  Pipeline
-  Trails
-  Fire Area
-  Closure Area



RMD
6/26/2015
9:31:15 PM



148°32'0"W 148°30'0"W 148°28'0"W 148°26'0"W 148°24'0"W 148°22'0"W 148°20'0"W 148°18'0"W 148°16'0"W 148°14'0"W 148°12'0"W 148°10'0"W 148°8'0"W 148°6'0"W 148°4'0"W 148°2'0"W 148°0'0"W 147°58'0"W 147°56'0"W 147°54'0"W 147°52'0"W 147°50'0"W 147°48'0"W 147°46'0"W 147°44'0"W 147°42'0"W 147°40'0"W 147°38'0"W 147°36'0"W