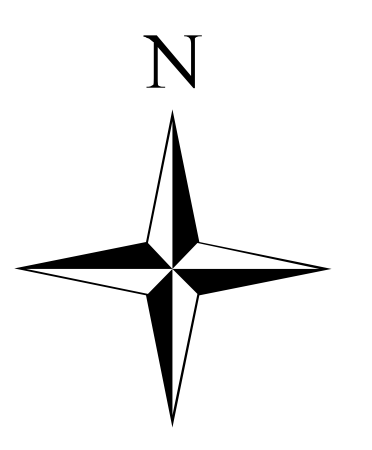


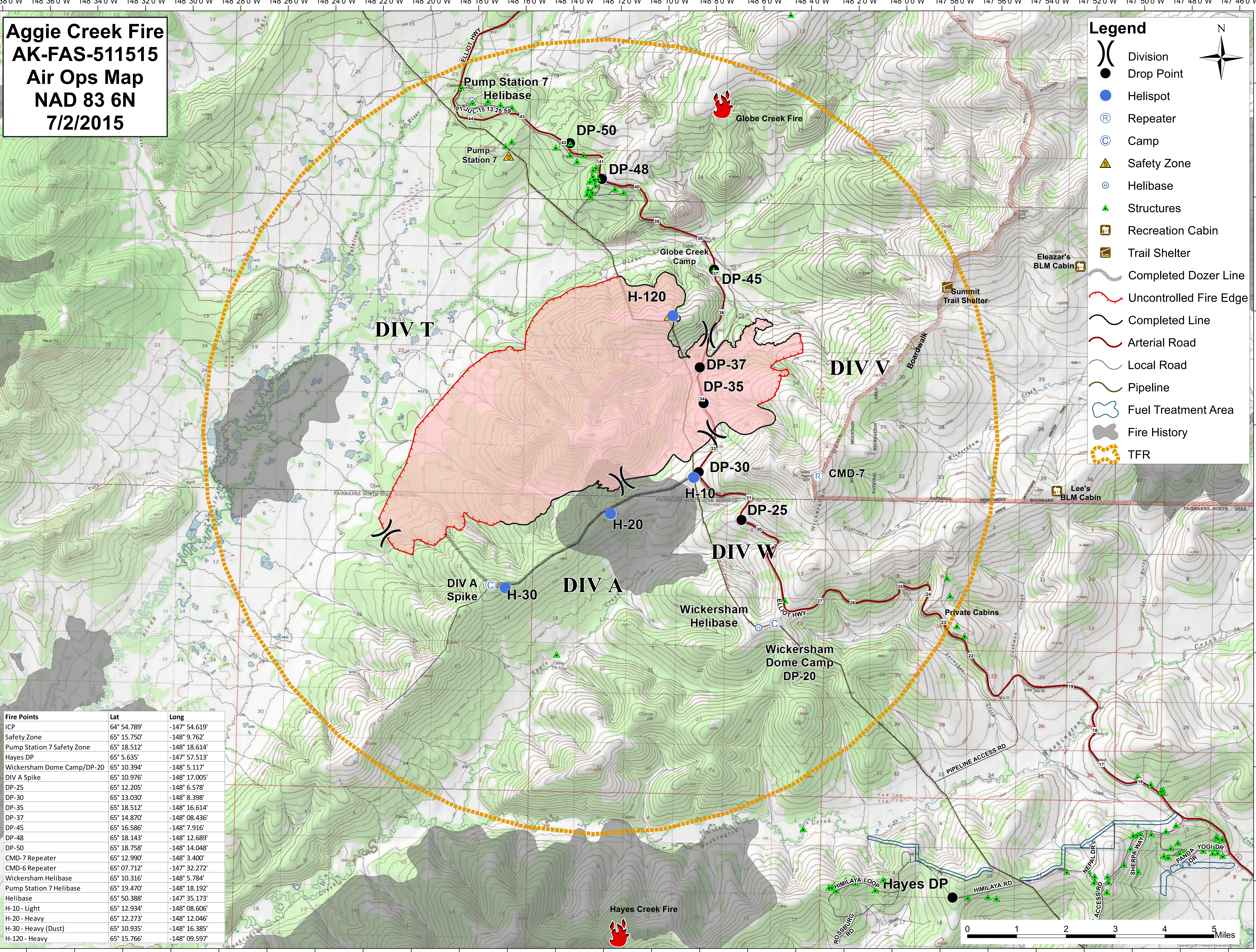
**Aggie Creek Fire  
AK-FAS-511515  
Air Ops Map  
NAD 83 6N  
7/2/2015**

**Legend**

- (X) Division
- Drop Point
- Helispot
- (R) Repeater
- (C) Camp
- ▲ Safety Zone
- (H) Helibase
- ▲ Structures
- 🏠 Recreation Cabin
- 🏠 Trail Shelter
- 👤 Completed Dozer Line
- 🔥 Uncontrolled Fire Edge
- 👤 Completed Line
- 🛣️ Arterial Road
- 🛣️ Local Road
- 🛣️ Pipeline
- 👤 Fuel Treatment Area
- 👤 Fire History
- 👤 TFR



Fire Points	Lat	Long
ICP	64° 54.789'	-147° 54.619'
Safety Zone	65° 15.750'	-148° 9.762'
Pump Station 7 Safety Zone	65° 18.512'	-148° 18.614'
Hayes DP	65° 5.635'	-147° 57.513'
Wickersham Dome Camp/DP-20	65° 10.394'	-148° 5.117'
DIV A Spike	65° 10.976'	-148° 17.005'
DP-25	65° 12.205'	-148° 6.578'
DP-30	65° 13.030'	-148° 8.398'
DP-35	65° 18.512'	-148° 16.614'
DP-37	65° 14.870'	-148° 08.436'
DP-45	65° 16.586'	-148° 7.916'
DP-48	65° 18.143'	-148° 12.689'
DP-50	65° 18.758'	-148° 14.048'
CMD-7 Repeater	65° 12.990'	-148° 3.400'
CMD-6 Repeater	65° 07.712'	-147° 32.272'
Wickersham Helibase	65° 10.316'	-148° 5.784'
Pump Station 7 Helibase	65° 19.470'	-148° 18.192'
Helibase	65° 50.388'	-147° 35.173'
H-10 - Light	65° 12.934'	-148° 08.606'
H-20 - Heavy	65° 12.273'	-148° 12.046'
H-30 - Heavy (Dust)	65° 10.935'	-148° 16.385'
H-120 - Heavy	65° 15.766'	-148° 09.597'



148°36'0"W 148°34'0"W 148°32'0"W 148°30'0"W 148°28'0"W 148°26'0"W 148°24'0"W 148°22'0"W 148°20'0"W 148°18'0"W 148°16'0"W 148°14'0"W 148°12'0"W 148°10'0"W 148°8'0"W 148°6'0"W 148°4'0"W 148°2'0"W 147°58'0"W 147°56'0"W 147°54'0"W 147°52'0"W 147°50'0"W 147°48'0"W 147°46'0"W