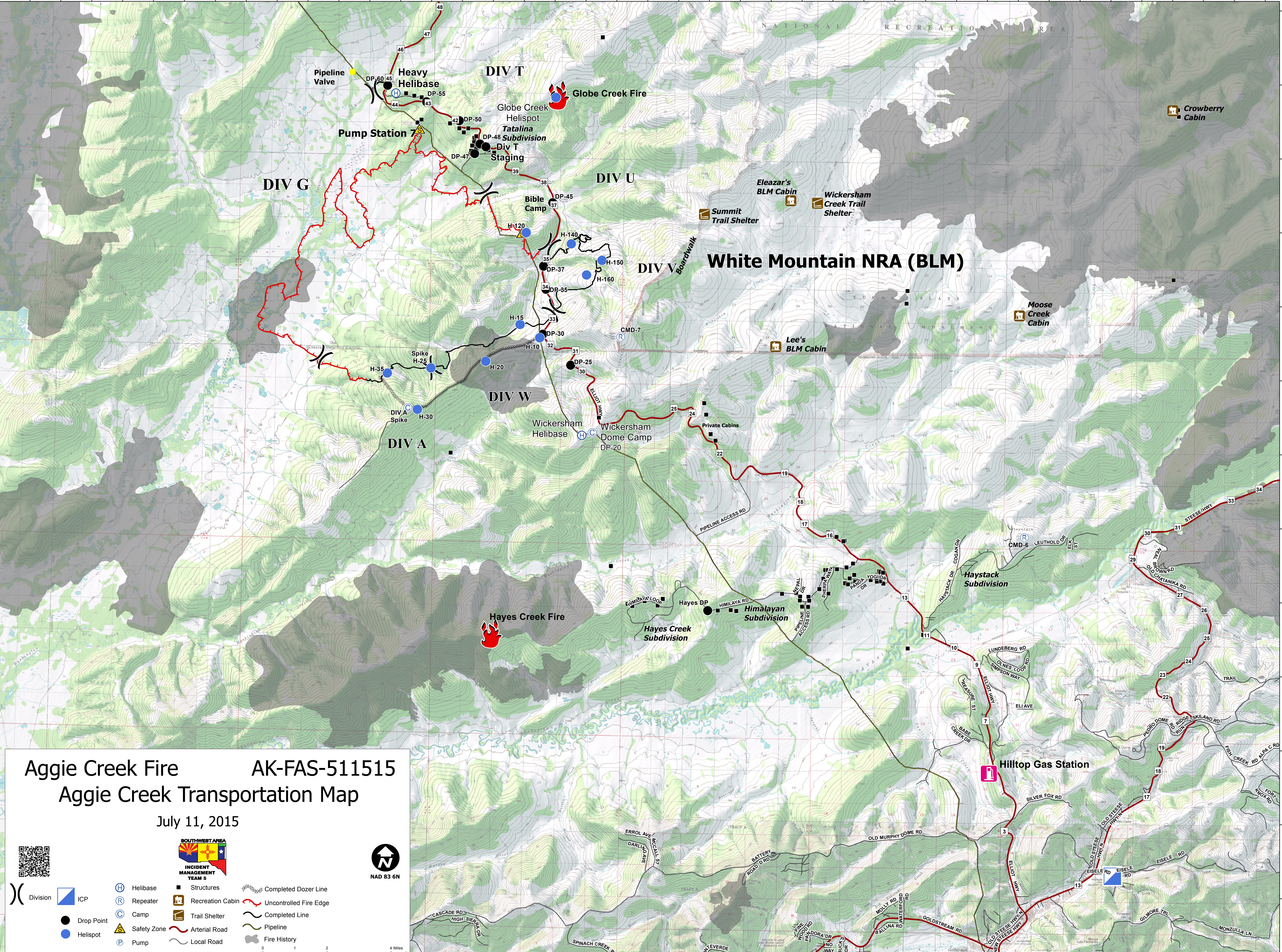


148°42'0"W 148°38'0"W 148°34'0"W 148°30'0"W 148°26'0"W 148°22'0"W 148°18'0"W 148°14'0"W 148°10'0"W 148°6'0"W 148°2'0"W 147°58'0"W 147°54'0"W 147°50'0"W 147°46'0"W 147°42'0"W 147°38'0"W 147°34'0"W 147°30'0"W 147°26'0"W 147°22'0"W

65°20'0"N
65°18'0"N
65°16'0"N
65°14'0"N
65°12'0"N
65°10'0"N
65°8'0"N
65°6'0"N
65°4'0"N
65°2'0"N
64°58'0"N



Aggie Creek Fire **AK-FAS-511515**
Aggie Creek Transportation Map

July 11, 2015



	Division		ICP		Helibase		Structures		Completed Dozer Line
	Repeater		Camp		Drop Point		Recreation Cabin		Uncontrolled Fire Edge
	Helispot		Safety Zone		Trail Shelter		Completed Line		Pipeline
	Pump		Arterial Road		Fire History		Local Road		

148°42'0"W 148°38'0"W 148°34'0"W 148°30'0"W 148°26'0"W 148°22'0"W 148°18'0"W 148°14'0"W 148°10'0"W 148°6'0"W 148°2'0"W 147°58'0"W 147°54'0"W 147°50'0"W 147°46'0"W 147°42'0"W 147°38'0"W 147°34'0"W 147°30'0"W 147°26'0"W 147°22'0"W