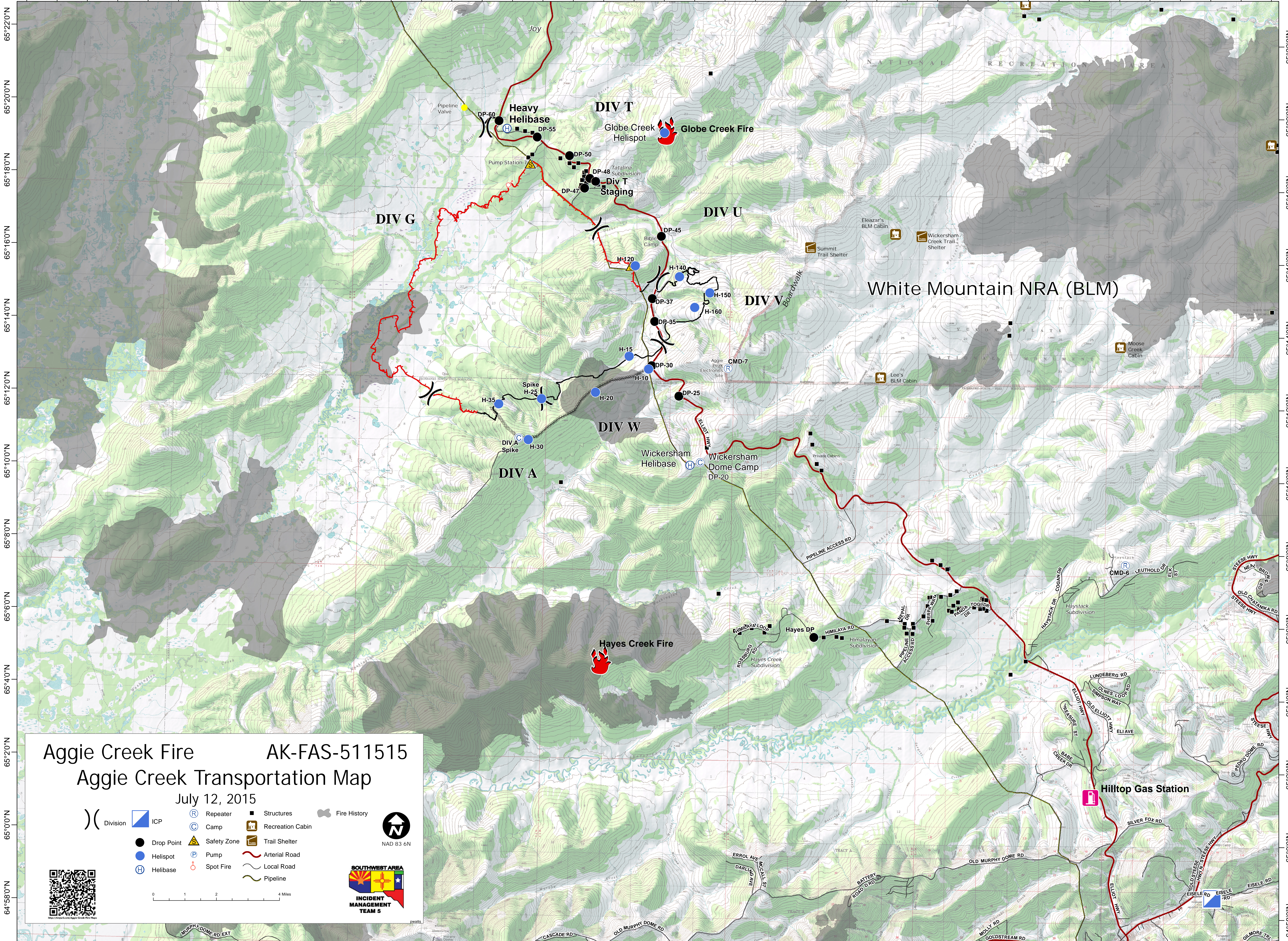


148°48'0"W 148°44'0"W 148°40'0"W 148°36'0"W 148°32'0"W 148°28'0"W 148°24'0"W 148°20'0"W 148°16'0"W 148°12'0"W 148°8'0"W 148°4'0"W 147°56'0"W 147°52'0"W 147°48'0"W 147°44'0"W 147°40'0"W 147°36'0"W 147°32'0"W 147°28'0"W



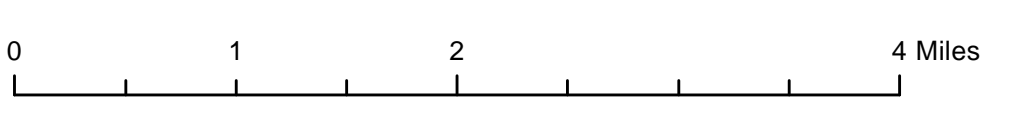
65°22'0"N
65°20'0"N
65°18'0"N
65°16'0"N
65°14'0"N
65°12'0"N
65°10'0"N
65°8'0"N
65°6'0"N
65°4'0"N
65°2'0"N
64°58'0"N

65°22'0"N
65°20'0"N
65°18'0"N
65°16'0"N
65°14'0"N
65°12'0"N
65°10'0"N
65°8'0"N
65°6'0"N
65°4'0"N
65°2'0"N
64°58'0"N

Aggie Creek Fire AK-FAS-511515 Aggie Creek Transportation Map

July 12, 2015

- Division
- ICP
- Drop Point
- Helispot
- Helibase
- Repeater
- Camp
- Safety Zone
- Pump
- Spot Fire
- Structures
- Recreation Cabin
- Trail Shelter
- Arterial Road
- Local Road
- Pipeline
- Fire History



148°48'0"W 148°44'0"W 148°40'0"W 148°36'0"W 148°32'0"W 148°28'0"W 148°24'0"W 148°20'0"W 148°16'0"W 148°12'0"W 148°8'0"W 148°4'0"W 147°56'0"W 147°52'0"W 147°48'0"W 147°44'0"W 147°40'0"W 147°36'0"W 147°32'0"W 147°28'0"W