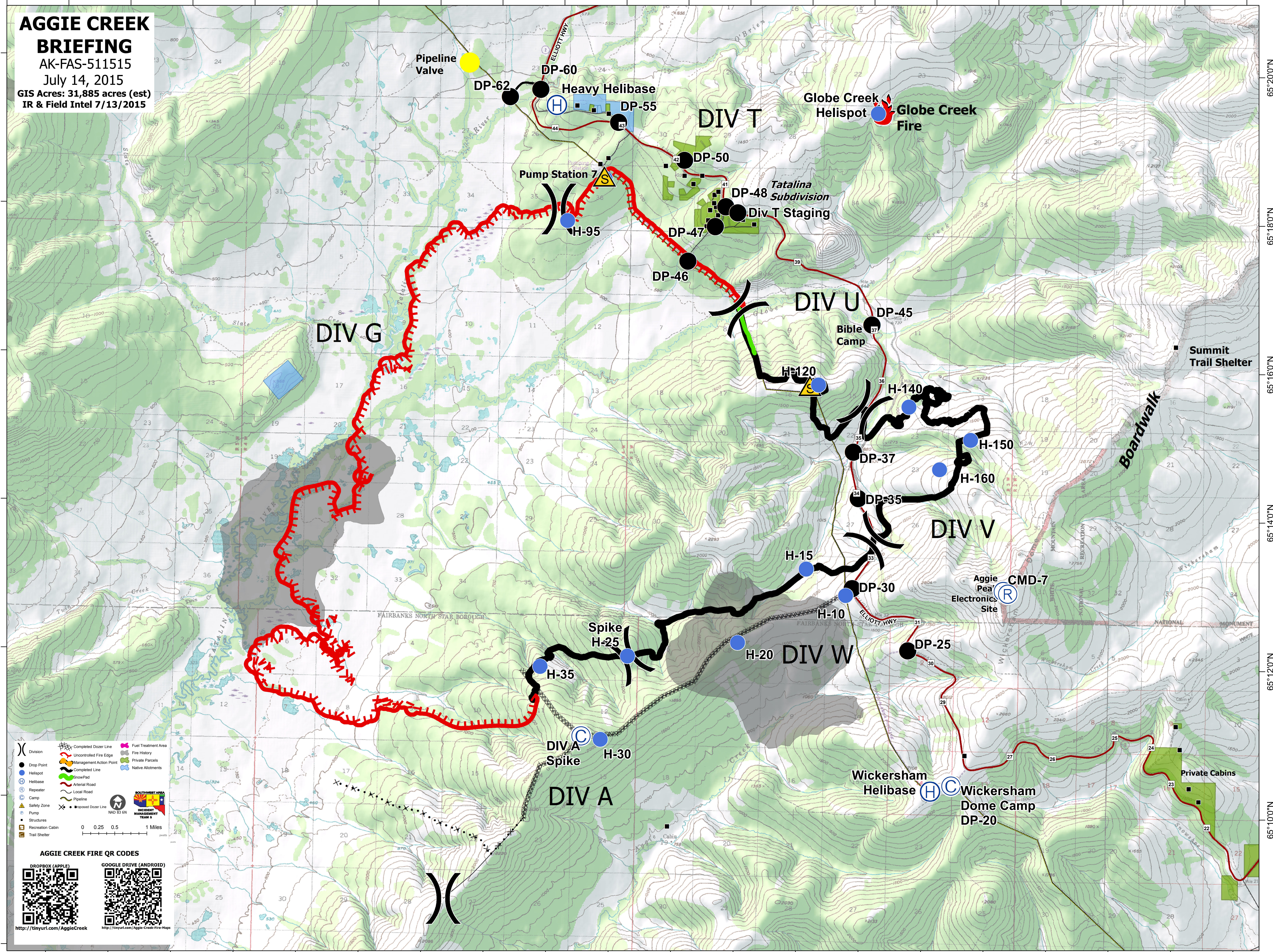


148°36'0"W 148°34'0"W 148°32'0"W 148°30'0"W 148°28'0"W 148°26'0"W 148°24'0"W 148°22'0"W 148°20'0"W 148°18'0"W 148°16'0"W 148°14'0"W 148°12'0"W 148°10'0"W 148°8'0"W 148°6'0"W 148°4'0"W 148°2'0"W 148°0'0"W 147°58'0"W 147°56'0"W

AGGIE CREEK BRIEFING

AK-FAS-511515
July 14, 2015
GIS Acres: 31,885 acres (est)
IR & Field Intel 7/13/2015



148°34'0"W 148°32'0"W 148°30'0"W 148°28'0"W 148°26'0"W 148°24'0"W 148°22'0"W 148°20'0"W 148°18'0"W 148°16'0"W 148°14'0"W 148°12'0"W 148°10'0"W 148°8'0"W 148°6'0"W 148°4'0"W 148°2'0"W 148°0'0"W 147°58'0"W 147°56'0"W

65°20'0"N
65°18'0"N
65°16'0"N
65°14'0"N
65°12'0"N
65°10'0"N
65°8'0"N

65°20'0"N
65°18'0"N
65°16'0"N
65°14'0"N
65°12'0"N
65°10'0"N