



Southwest Area IMT 5

Richard Nieto IC

Monday 7/13/15

Dayshift 0800 -2200

Aggie Creek

AK-FAS-511515

Fire Code JTZ2

State Code 73-511515

FS Code: PNJTZ2 1502

Hayes Creek

AK-FAS-511557

Fire Code JT3U

State Code 73-511557

FS Code: PNJT3U 1502

AGGIE CREEK FIRE QR CODES

DROPBOX (APPLE)




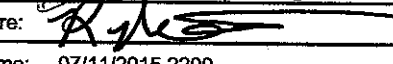
<http://tinyurl.com/AggieCreek>

GOOGLE DRIVE (ANDROID)

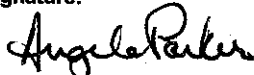


<http://tinyurl.com/Aggie-Creek-Fire-Maps>

INCIDENT OBJECTIVES (ICS 202)

1. Incident Name:	2. Operational Period: 0800-2200		
AGGIE CREEK	Date/Time From: 07/13/2015 0800	MON	Date/Time To: 07/13/2015 2200
3. Objective(s):			
Value at Risk			
<ul style="list-style-type: none"> • Tatalina Subdivision. • Alyeska Trans-Alaska Pipeline and associated infrastructure (valves, pump stations, snow pad). • Elliot Highway corridor and structures. • Native allotments and improvements. • Communities of Hayes, Himalaya, and Haystack. • BLM cabins and communication sites. 			
Incident Objectives			
<ul style="list-style-type: none"> • Fire personnel and public safety is fully achieved through the application and implementation of sound risk management analysis for incident activities. • Values at risk are protected from adverse fire and incident management actions. • Traffic along the Elliot Highway is minimally disrupted. • Native allotments are protected with priority on structure protection. • Information and intelligence is gathered and collected on infrastructure and sensitive resources for ongoing fire management planning and long-term analysis. 			
Incident Requirements:			
<ul style="list-style-type: none"> • Utilize appropriate suppression tactics to minimize negative impacts to natural, wildlife, and cultural resources. • Incident personnel support area initial attack as requested by the host agency. • Provide fire and smoke related information to the media and residents. • Foster and maintain relationships between partners, agencies, and communities currently and potentially affected by the fire. • Cost containment is factored into risk management decision making. 			
4. Operational Period Command Emphasis:			
General Situational Awareness:			
See Attached Safety Plan			
5. Site Safety Plan Required? Yes <input type="checkbox"/> No <input checked="" type="checkbox"/>			
Approved Site Safety Plan(s) Located at:			
6. Incident Action Plan (the items checked below are included in this Incident Action Plan):			
<input checked="" type="checkbox"/> ICS 202	<input type="checkbox"/> ICS 207	Other Attachments:	
<input checked="" type="checkbox"/> ICS 203	<input type="checkbox"/> ICS 208	<input checked="" type="checkbox"/> MEDICAL INCIDENT	
<input checked="" type="checkbox"/> ICS 204	<input checked="" type="checkbox"/> ICS 220	<input checked="" type="checkbox"/> HUMAN RESOUCE	
<input checked="" type="checkbox"/> ICS 205	<input checked="" type="checkbox"/> Map/Chart	<input checked="" type="checkbox"/> PHONE LIST	
<input type="checkbox"/> ICS 205A	<input checked="" type="checkbox"/> Weather Forecast/Tides/Currents	<input checked="" type="checkbox"/> UNIT LOG	
<input checked="" type="checkbox"/> ICS 206			
7. Prepared by: WAYNE ROBBIE	Position/Title: PSC2	Signature: 	
8. Approved by Incident Commander:		Signature: 	
Name: RICHARD NIETO, ICT2		Date/Time: 07/11/2015 2200	
ICS 202	IAP Page		

ORGANIZATION ASSIGNMENT LIST (ICS 203)

1. Incident Name:		2. Operational Period: 0800-2200	
AGGIE CREEK		Date/Time From: 07/13/2015 0800 MON	Date/Time To: 07/13/2015 2200 MON
3. Incident Commander(s) and Command Staff:		6. Logistics Section:	
IC/UC	RICHARD NIETO / JEFF ANDREWS (T) JOHN PIERSON, DEPUTY	CHIEF	DOUGLAS J WILLIAMS MARK CATRON, MARGIE GUZMAN (T)
SAFETY OFFICER	ALLAN R SETZER JOSHUA TIBBETTS (T)	MEDICAL UNIT	MIKE LUND ROBERT BACON
INFORMATION OFFICER	IRIS ESTES; HOLLY KRAKE (T)	SUPPLY UNIT	VALERIE WILLIAMS
LIAISON OFFICER	SCOTT COOKE AARON BALDRIDGE	FACILITIES UNIT	RUSSELL FOX
SECURITY MANAGER	RAMONA WHITE (T) GEORGE HEDGES	GROUND SUPPORT UNIT	TONY ARMIJO
		COMMUNICATIONS UNIT	RICK LAZO
		FOOD UNIT	
		RECEIVING AND DISTRIBUTION	T. WITHERS; L.DYER (T)
		ORDERING UNIT MANAGER	P.HERSEY; J.COLE (T);S.FLETCHER (T)
4. Agency/Organization Representative(s):		7. Operations Section:	
Agency/Organization	Name	OPS SECTION CHIEF - PLANNING	BILL KING MARK BERNAL (T)
STATE OF ALASKA DCNR	PAUL MAKI	OPS SECTION CHIEF	PAUL DELMERICCO, JAMES VILLARD LEROY HOLGUIN (T)
ALASKA DEPT OF FISH AND GAME	BILL MORRIS	DIVISION A	NATE NOZIE
FAIRBANKS NORTH STAR BOROUGH EMS DIRECTOR	DAVID GIBBS	DIVISION G	BEAU KIDD
ALASKA STATE TROOPER	LT LONNY PISCOYA SGT MIKE ROBERTS	DIVISION T	TERRANCE GALLEGOS
BLM	LENORE HEPPLER	DIVISION U	TIM FONDRIEST TRENTON GIRARD (T)
IARR	R-5 FREDDIE ESPINOZA; ANGELA SANCHEZ R-3 ALAN SINCLAIR; FRANK BEDONIE	DIVISION V	JASEN A TEAL
		DIVISION W	DAVID MARTINEZ
		STRUCTURE GROUP	MIKE HOSTETLER JEREMY HANSEN (T)
5. Planning Section:		7b. Air Operations Branch:	
CHIEF	WAYNE A ROBBIE LANN MOORE, DEPUTY	AIR OPS BRANCH DIRECTOR	GALEN YOUNG
DEMOBILIZATION UNIT	ROBERT CORDTS GERALD SANCHEZ (T)	AIR SUPPORT SUPERVISOR	KENT WEDIN
RESOURCES UNIT	ANGELA PARKER	HELIBASE MANAGER	PAUL BORCHERDING
SITUATION UNIT	JEFFREY L HICKERSON	AIR ATTACK SUPERVISOR	M.STOUT; G.BEDDOW; G.DANIEL; A.DAMM
GIS SPECIALIST	MARILYN RUTH PORTER PHIL WATTS	8. Finance/Administration Section:	
FIRE BEHAVIOR ANALYST	GALEN ROESLER	CHIEF	BILLY M ZAMORA WANDA J GALLEGOS (T)
STRATEGIC OP PLANNER	BOB LINEBACK; BILL MILLER	TIME UNIT	
INCIDENT METEOROLOGIST	CHRISTIAN CASSELL	COST UNIT	CAROL CHAVEZ
COMPUTER SPECIALIST	BRUCE JULAGAY CHRIS DAWSON	TIME UNIT	S. IMLER-JACQUEZ; P.ATTALA
RESOURCE ADVISOR	NOAH LLOYD	EQUIPMENT TIME UNIT	
HRSP/TRAINING	G.MELCHOR; J.MAES		
9. Prepared By:		Position/Title: RESL	Signature:
ICS 203	Name: ANGELA PARKER	Date/Time: 07/11/2015 2030	
	IAP Page		



INCIDENT Weather Forecast



FORECAST NO: 17

NAME OF FIRE: Aggie Creek

PREDICTION FOR: DAY SHIFT

UNIT: Alaska DNR

SHIFT DATE: Monday, July 13th, 2015

SIGNED:

TIME AND DATE

Christian Cassell
Incident Meteorologist

FORECAST ISSUED: 8:00 PM Sunday, July 12th, 2015

WEATHER DISCUSSION:

Today will bring another day of increasing clouds and moisture, with scattered showers and isolated thunderstorms developing by early afternoon and generally persisting through the day. Any stronger storm has the potential to produce gusty outflow winds, locally heavy downpours, pea-size hail, and lightning. Several disturbances will move west across the area later today through Wednesday. The strongest disturbance will move across the area late Tuesday night through midday Wednesday bringing the potential for a significant widespread steady rain.

WEATHER FORECAST FOR TODAY (MONDAY):

WEATHER: Mostly cloudy. Areas of smoke lifting during the morning. Scattered showers and isolated thunderstorms developing by early afternoon. Stronger showers and storms may produce gusty outflow winds, lightning, heavy downpours, and pea-sized hail.

TEMPERATURES: Highs 67-75.

MINIMUM RELATIVE HUMIDITY: 40-50%.

20 FT WINDS:

RIDGETOP – Northeast 3 to 6 mph early becoming light and variable or terrain-driven wind.

SLOPE/VALLEY – East to Southeast 2 to 4 mph early becoming light and variable or terrain-driven.

STABILITY/INVERSION: Inversion lifting by late morning.

LAL: 2

CHANCE OF WETTING RAIN: 20%

TONIGHT (MONDAY NIGHT):

Rain likely. Areas of smoke/inversion developing after midnight. Lows 52-55. Maximum RHs 90 to 100%. Variable winds 2 to 5 mph. CWR: 40%

OUTLOOK FOR TUESDAY:

Scattered showers and isolated thunderstorms developing by afternoon...then steady widespread rain developing overnight. Highs 58-65. Minimum RHs 60-70%. Southwest winds 2 to 5 mph. CWR: 40%

EXTENDED FORECAST (WEDNESDAY-FRIDAY):

Wednesday: Rain...possibly heavy at times early morning through mid-afternoon. Partial clearing developing in the evening. Highs 54-60. Lows 46-54. Minimum RH 65-75%. Southwest wind 2 to 6 mph.

Thursday: Partly sunny. Areas of smoke. Highs 62-69. Lows 49-54. Minimum RH 39-47%. South to southwest wind 2 to 4 mph.

Friday: Partly cloudy. Areas of smoke. Highs 62-69. Lows 49-54. Minimum RH 41-46%. South or terrain-driven wind 2 to 4 mph.

EXTRA INFORMATION:

Today's Maximum/Minimum Conditions (Sunday, July 12th, 2015):

Fairbanks (433 feet): Temp – 76F. Relative Humidity – 36%. Wind – NE 8 mph.

Alaska Portable 6 (2290 feet): Temp – 69F. Relative Humidity – 45%. Wind – SSE 5G11 mph.

Caribou Peak (2517 ft): Temp – 68F. Relative Humidity – 34%. Wind – N 8G16 mph.

Chatanika (1626 ft): Temp – 73F. Relative Humidity – 37%. Wind – NW 6G14 mph.

Wickersham Dome (2229 feet): Temp – 67F. Relative Humidity – 42% Wind – WNW 9G15 mph.

FIRE BEHAVIOR FORECAST

FORECAST NUMBER: 19

TYPE OF FIRE: Wildland Fire

FIRE NAME: Aggie Creek

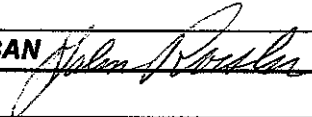
OPERATIONAL PERIOD: Day Shift, July 13, 2015

DATE ISSUED: July 12, 2015

TIME ISSUED: 2100

UNIT: Alaska DNR

SIGNED: /s/ Galen Roesler FBAN



INPUTS

WEATHER SUMMARY:

Increasing clouds with scattered showers and isolated thunderstorms.
See attached Fire Weather Forecast.

OUTPUTS

FIRE BEHAVIOR

GENERAL:

Yesterday the southern part of the fire received precipitation. Today is predicted to have higher RH and light winds. These factors will combine to reduce the potential for intense burning.

Expect smoldering with isolated areas of low to moderate intensity fire in duff and surface fuels.

Isolated torching will continue where there is surface heat in black spruce.

Thunderstorms are in the forecast. Watch for the possibility of strong outflow winds.

SPECIFIC:

Divisions A: This division received rain yesterday. Expect smoldering with areas of low to moderate intensity surface fire. Isolated torching is possible in black spruce. With light winds today, fire activity and spread will be driven by fuels and terrain producing little spread unless influenced by thunderstorm outflows.

Division G: Fire behavior in this division will vary from low to moderate intensity surface fire. There will continue to be some westward spread. Where rain fell yesterday, the fire will smolder with isolated areas of low intensity surface fire.

Division T: A lot of heat remains on the perimeter in this division from burnout. Expect smoldering with areas of low to moderate intensity surface fire in fuel concentrations. There could be some isolated torching in black spruce.

Divisions U, V, & W: Fire behavior will be minimal. Expect smoldering with isolated areas of low intensity surface fire in duff and surface fuels.

Globe Creek and Hayes Fires: No activity or spread anticipated.

Initial Attack: Expect low to moderate intensity surface fire and moderate spread on new fires.

Possible spread rates:

Fuel Model	Rate of Spread
Black Spruce	20 feet/min (torching)
Grass/Tussock Tundra	11 feet/min
Mixedwoods, Green	6 feet/min

Alaska Portable #6 RAWs (forecasted): FFMC 90.4 Very High, ISI 5 High, BUI 124.2 Extreme, FWI 21.3 High
All fuel types in the fire area remain critically dry.

AIR OPERATIONS:

No problems identified for air ops.

SAFETY:

It can be difficult to see very far beyond your location in the fuel types on this fire. Maintain good communication and use lookouts as appropriate. LCES. Standard Firefighting Order #2 – Know what your fire is doing at all times.

Division/Group Assignment List (ICS 204 WF)

1. Incident Name:			3.			
AGGIE CREEK			Branch:		Division/Group: DIVISION A	
2. Operational Period: 0800-2200						
Date/Time From: 07/13/2015 0800 MON		Date/Time To: 07/13/2015 2200 MON				
4. Operations Personnel						
OPERATIONS CHIEF - PLANNING		WILLIAM F KING MARK BERNAL (T)		OPERATIONS CHIEF - FIELD		PAUL DELMERICO LEROY HOLGUIN (T)
DIVISION/GROUP SUPERVISOR		NATE NOZIE		AIR ATTACK SUPERVISOR		M. STOUT; G. BEDDOW; G. DANIELS; A. DAMM (T)
5. Resources Assigned this Period						
Strike Team / Task Force / Resource Designator		LWD	Leader	Number Persons	Drop Off PT./Time	Pick Up PT./Time
SOF2		07/23	JONATHAN LEE	1	BASE/0800	BASE/2200
HEQB			JOSH TAYLOR	1	BASE/0800	BASE/2200
DOZER - D8 CATERPILLER - V:12312 - MIDDLE FORK		08/01	JOSHUA RAY	2	BASE/0800	BASE/2200
E-220 DOZER BOYTILLA				1	BASE/0800	BASE/2200
TFLD		07/11	CHRIS JESSOP	1	BASE/0800	BASE/2200
6. Control Operations/Work Assignments:						
Construct dozer line on ridge top heading southwest of H30. Utilize aviation resource to delay fire from approaching ridge with dozer line construction to protect subdivision to the south.						
7. Special Instructions:						
<ol style="list-style-type: none"> 1. Ensure LCES, Test communications and utilize human repeaters and Air Attack if needed. 2. Notify Op's prior to any ignitions. Establish and communicate trigger points to all personnel. 3 Familiarize yourself with Management Action Points (M.A.P.'s) associated with your division, and be prepared to take appropriate actions. 4. DIVS; report GPS locations of all water withdrawal locations (pumps, engines, aviation) to OSC2. 5. Notify Planning Ops for Resource and Supply needs by 1600 for next shift. Anticipate ordering 2-3 days in advance. 						
8. Division/Group Communication Summary						
Function	Channel	RX Frequency N/W	RX Tone/NAC	TX Frequency N/W	TX Tone/NAC	Mode
COMMAND	7	167.1000	167.9	169.7500	167.9	A
TACTICAL	1	168.0500	167.9	168.0500	167.9	A
AIR TO GROUND	14	169.8250		169.8250		A
AIR TO GROUND	15	169.9875		169.9875		A
9. Prepared By (Resource Unit Leader)			Approved By (Planning Section Chief)		Date	Time
ANGELA PARKER RESL <i>Angela Parker</i>			WAYNE ROBBIE PSC2 <i>By Wayne Robbie</i>		07/12/2015	2200

Division/Group Assignment List (ICS 204 WF)

1. Incident Name:		3.	
AGGIE CREEK		Branch:	Division/Group:
2. Operational Period: 0800-2200		DIVISION G	
Date/Time From: 07/13/2015 0800 MON	Date/Time To: 07/13/2015 2200 MON		

4. Operations Personnel			
OPERATIONS CHIEF - PLANNING	WILLIAM F KING MARK BERNAL (T)	OPERATIONS CHIEF - FIELD	PAUL DELMERICO LEROY HOLGUIN (T)
DIVISION G	BEAU KIDD	AIR ATTACK SUPERVISOR	M. STOUT; G. BEDDOW; G. DANIELS; A. DAMM (T)

5. Resources Assigned this Period					
Strike Team / Task Force / Resource Designator	LWD	Leader	Number Persons	Drop Off PT./Time	Pick Up PT./Time
CREW - T1 - NMCIF - MT. TAYLOR IHC	07/18	CHRISTIAN C BRASHEARS	19	BASE/0800	BASE/2200
CREW - T1 - CARSON HOTSHOTS IHC	07/16	RICHARD SACK	21	BASE/0800	BASE/2200
CREW-T1-MENDOCINO IHC			20	BASE/0800	BASE/2200
CREW-T1-FEATHER RIVER IHC			20	BASE/0800	BASE/2200
SOF2	07/16	P. SPOR	1	BASE/0800	BASE/2200
EMPF	07/16	BRADLEY NELSON	1	BASE/0800	BASE/2200
TRACKED UV - NODWELL -VIN:16069 - REMOTE TRANSPOR	07/18	TIM KIEHL	1	BASE/0800	BASE/2200

6. Control Operations/Work Assignments:

Construct hand line from Division G/T break to Tatalina River to protect the Alyeska Trans Alaska pipeline infrastructure and Elliot Highway.

7. Special Instructions:

1. Ensure LCES, Test communications and utilize human repeaters and Air Attack if needed.
2. Notify Op's prior to any ignitions. Establish and communicate trigger points to all personnel.
3. Familiarize yourself with Management Action Points (M.A.P.'s) associated with your division, and be prepared to take appropriate actions.
4. DIVS; report GPS locations of all water withdrawal locations (pumps, engines, aviation) to OSC2.
5. Notify Planning Ops for Resource and Supply needs by 1600 for next shift. Anticipate ordering 2-3 days in advance.

8. Division/Group Communication Summary

Function	Channel	RX Frequency N/W	RX Tone/NAC	TX Frequency N/W	TX Tone/NAC	Mode
TACTICAL	1	168.0500	167.9	168.0500	167.9	A
COMMAND	8	173.0375	167.9	167.3250	167.9	A
AIR TO GROUND	14	169.8250		169.8250		A
AIR TO GROUND	15	169.9875		169.9875		A

9. Prepared By (Resource Unit Leader)	Approved By (Planning Section Chief)	Date	Time
ANGELA PARKER RESL <i>Angela Parker</i>	WAYNE ROBBIE PSC2 <i>By [Signature]</i>	07/12/2015	2200

Division/Group Assignment List (ICS 204 WF)

1. Incident Name:			3.			
AGGIE CREEK			Branch:		Division/Group:	
2. Operational Period: 0800-2200			DIVISION T			
Date/Time From: 07/13/2015 0800 MON		Date/Time To: 07/13/2015 2200 MON				
4. Operations Personnel						
OPERATIONS CHIEF - PLANNING		WILLIAM KING; MARK BERNAL		OPERATIONS CHIEF - FIELD		PAUL DELMERIC; LEROY HOLQUIN (T)
DIVISION/GROUP SUPERVISOR		TERRANCE GALLEGOS;		AIR ATTACK SUPERVISOR		M.STOUT; G.BEDDOW; G.DANIELS; A. DAMM (T)
5. Resources Assigned this Period						
Strike Team / Task Force / Resource Designator		LWD	Leader	Number Persons	Drop Off PT./Time	Pick Up PT./Time
CREW-T1-REDDING IHC				20	BASE/0800	BASE/2200
CREW T-1-MODOC IHC				20	BASE/0800	BASE/2200
CREW - T2 - OREGON WOODS INC #31		07/14	SCOTT POLHAMUS	20	BASE/0800	BASE/2200
CREW - T2 - ST. MICHAEL		07/24		20	BASE/0800	BASE/2200
CREW - T2 - BUCKLAND		07/24		20	BASE/0800	BASE/2200
TRACKED UV- GILLMORE #149		07/20	MCFADDEN BART	1	BASE/0800	BASE/2200
FORESTRY MASTICATOR-AK REMOTE BUILDERS #119		07/13	TONY BUERGE	1	BASE/0800	BASE/2200
WATER TENDER -NSFD #32		07/25		1	BASE/0800	BASE/2200
TFLD		07/17	KEVIN RIGGS(T)	1	BASE/0800	BASE/2200
SOF2		07/17	P. SPOR	1	BASE/0800	BASE/2200
EMTF		07/16	MICHAEL POVEDA	1	BASE/0800	BASE/2200
6. Control Operations/Work Assignments:						
Mop up and hold containment lines to secure fire perimeter to protect Alyeska Trans-Alaska Pipeline infrastructures, Globe Creek, Tatalina subdivision, and Elliot Highway.						
7. Special Instructions:						
<ol style="list-style-type: none"> 1. Ensure LCES, Test communications and utilize human repeaters and Air Attack if needed. 2. Notify Op's prior to any ignitions. Establish and communicate trigger points to all personnel. 3. Familiarize yourself with Management Action Points (M.A.P.'s) associated with your division, and be prepared to take appropriate actions. 4. DIVS; report GPS locations of all water withdrawal locations (pumps, engines, aviation) to OSC2. 5. Notify Planning Ops for Resource and Supply needs by 1600 for next shift. Anticipate ordering 2-3 days in advance. 						
8. Division/Group Communication Summary						
Function	Channel	RX Frequency N/W	RX Tone/NAC	TX Frequency N/W	TX Tone/NAC	Mode
TACTICAL	2	168.2000	167.9	168.2000	167.9	A
COMMAND	7	167.1000	167.9	169.7500	167.9	A
AIR TO GROUND	14	169.8250		169.8250		A
AIR TO GROUND	15	169.9875		169.9875		A
9. Prepared By (Resource Unit Leader)		Approved By (Planning Section Chief)			Date	Time
ANGELA PARKER, RESL <i>Angela Parker</i>		WAYBE ROBBIE PSC2 <i>By [Signature]</i>			07/12/2015	2200

Division/Group Assignment List (ICS 204 WF)

1. Incident Name:			3.			
AGGIE CREEK			Branch:		Division/Group: DIVISION U	
2. Operational Period: 0800-2200						
Date/Time From: 07/13/2015 0800 MON		Date/Time To: 07/13/2015 2200 MON				
4. Operations Personnel						
OPERATIONS CHIEF - PLANNING		WILLIAM F KING MARK BERNAL (T)		OPERATIONS CHIEF - FIELD		PAUL DELMERICO LEROY HOLGUIN (T)
DIVISION/GROUP SUPERVISOR		TIM FONDRIEST TRENTON GIRARD (T)		AIR ATTACK SUPERVISOR		M.STOUT; G.BEDDOW; G.DANIELS; A.DAMM (T)
5. Resources Assigned this Period						
Strike Team / Task Force / Resource Designator		LWD	Leader	Number Persons	Drop Off PT./Time	Pick Up PT./Time
CREW-T2- OREGON WOODS #33		07/14	CHARLES WATKINS	20	BASE/0800	BASE/2200
PATRICK C-58		07/14	DAMION LOWTHER	20	BASE/0800	BASE/2200
CREW - T2 - FAIRBANKS - 1		07/18	ISAAC B SOLOMON	17	BASE/0800	BASE/2200
CREW - T2 - MT. VILLAGE		07/25		20	BASE/0800	BASE/2200
SKIDGINE # E124		07/15	KEN MENDES	1	BASE/0800	BASE/2200
EMPF		07/14	M.BREWER; R.SANDLER	1	BASE/0800	BASE/2200
SOF2		07/23	ALAN VANDIVER	1	BASE/0800	BASE/2200
6. Control Operations/Work Assignments:						
Maintain sprinkler system, mop-up, and utilize water to control perimeter and increase protection to Alyeska Trans-Alaska Pipeline, Globe Creek, Tatalina structures, and Elliot Highway.						
7. Special Instructions:						
<ol style="list-style-type: none"> 1. Ensure LCES, Test communications and utilize human repeaters and Air Attack if needed. 2. Notify Op's prior to any ignitions. Establish and communicate trigger points to all personnel. 3 Familiarize yourself with Management Action Points (M.A.P.'s) associated with your division, and be prepared to take appropriate actions. 4. DIVS; report GPS locations of all water withdrawal locations (pumps, engines, aviation) to OSC2. 5. Notify Planning Ops for Resource and Supply needs by 1600 for next shift. Anticipate ordering 2-3 days in advance. 						
8. Division/Group Communication Summary						
Function	Channel	RX Frequency N/W	RX Tone/NAC	TX Frequency N/W	TX Tone/NAC	Mode
TACTICAL	5	168.2500	167.9	168.2500	167.9	A
COMMAND	7	167.1000	167.9	169.7500	167.9	A
AIR TO GROUND	14	169.8250		169.8250		A
AIR TO GROUND	15	169.9875		169.9875		A
9. Prepared By (Resource Unit Leader)			Approved By (Planning Section Chief)		Date	Time
ANGELA PARKER, RESL <i>Angela Parker</i>			WAYNE ROBBIE PSC2 <i>By Low</i>		07/11/2015	2200

Division/Group Assignment List (ICS 204 WF)

1. Incident Name:		3				
AGGIE CREEK		Branch:		Division/Group:		
2. Operational Period:		0800-2200				
Date/Time From: 07/13/2015 0800 MON		Date/Time To: 07/13/2015 2200 MON		DIVISION V		
4. Operations Personnel						
OPERATIONS CHIEF - PLANNING		WILLIAM F KING MARK BERNAL (T)		OPERATIONS CHIEF - FIELD		PAUL DELMERICO LEROY HOLGUIN (T)
DIVISION/GROUP SUPERVISOR		JASEN A TEAL		AIR ATTACK SUPERVISOR		
5. Resources Assigned this Period						
Strike Team / Task Force / Resource Designator		LWD	Leader	Number Persons	Drop Off PT./Time	Pick Up PT./Time
CREW - T2IA - COBRAS - 4		07/23		22	BASE/0800	BASE/2200
CREW - T2 - FORT YUKON #2		07/25	DONALD CARROLL SR	20	BASE/0800	BASE/2200
SOF2		07/14	GARY KEMP	1	BASE/0800	BASE/2200
STCR		07/14	ROBERT SOLLAMI	1	BASE/0800	BASE/2200
EMPF		07/17	MATTHEW HORTON	1	BASE/0800	BASE/2200
6. Control Operations/Work Assignments:						
Patrol, mop-up, and secure fireline to prevent further spread to Alyeska Trans-Alaska Pipeline, Elliot Highway corridor, and White River Recreation area.						
7. Special Instructions:						
<ol style="list-style-type: none"> 1. Ensure LCES, Test communications and utilize human repeaters and Air Attack if needed. 2. Notify Op's prior to any ignitions. Establish and communicate trigger points to all personnel. 3. Familiarize yourself with Management Action Points (M.A.P.'s) associated with your division, and be prepared to take appropriate actions. 4. DIVS; report GPS locations of all water withdrawal locations (pumps, engines, aviation) to OSC2. 5. Notify Planning Ops for Resource and Supply needs by 1600 for next shift. Anticipate ordering 2-3 days in advance. 						
8. Division/Group Communication Summary						
Function	Channel	RX Frequency N/W	RX Tone/NAC	TX Frequency N/W	TX Tone/NAC	Mode
TACTICAL	3	168.6000	167.9	168.6000	167.9	A
COMMAND	7	167.1000	167.9	169.7500	167.9	A
AIR TO GROUND	14	169.8250		169.8250		A
AIR TO GROUND	15	169.9875		169.9875		A
9. Prepared By (Resource Unit Leader)		Approved By (Planning Section Chief)			Date	Time
ANGELA PARKER RESL <i>Angela Parker</i>		WAYNE ROBBIE PSC2 <i>By [Signature]</i>			07/12/2015	2200

Division/Group Assignment List (ICS 204 WF)

1. Incident Name:		3.	
AGGIE CREEK		Branch:	Division/Group: DIVISION W
2. Operational Period: 0800-2200			
Date/Time From: 07/13/2015 0800 MON	Date/Time To: 07/13/2015 2200 MON		

4. Operations Personnel			
OPERATIONS CHIEF - PLANNING	WILLIAM F KING MARK BERNAL (T)	OPERATIONS CHIEF - FIELD	PAUL DELMERICO LEROY HOLGUIN (T)
DIVISION/GROUP SUPERVISOR	DAVE MARTINEZ	AIR ATTACK SUPERVISOR	M. STOUT; G.BEDDOW; G.DANIELS; A..DAMM (T)

5. Resources Assigned this Period					
Strike Team / Task Force / Resource Designator	LWD	Leader	Number Persons	Drop Off PT./Time	Pick Up PT./Time
CREW -T2-RUBICON #3		D.LEVY	20	BASE/0800	BASE/2200
E6 -BIG STATE WILDFIRE #67	07/15	LEWIS SILAS	2	BASE/0800	BASE/2200
SOF2	07/16	DONALD RANNE	1	BASE/0800	BASE/2200
EMTF	07/15	A..SEAMAN;DELTA AMBULANCE	1	BASE/0800	BASE/2200

6. Control Operations/Work Assignments:
 Patrol, mop-up, and secure fireline to prevent further spread to Alyeska Trans-Alaska Pipeline, Elliot Highway corridor, and Wickersham area facilities.

7. Special Instructions:

1. Ensure LCES, Test communications and utilize human repeaters and Air Attack if needed.
2. Notify Op's prior to any ignitions. Establish and communicate trigger points to all personnel.
- 3 Familiarize yourself with Management Action Points (M.A.P.'s) associated with your division, and be prepared to take appropriate actions.
4. DIVS; report GPS locations of all water withdrawal locations (pumps, engines, aviation) to OSC2.
5. Notify Planning Ops for Resource and Supply needs by 1600 for next shift. Anticipate ordering 2-3 days in advance.

8. Division/Group Communication Summary						
Function	Channel	RX Frequency N/W	RX Tone/NAC	TX Frequency N/W	TX Tone/NAC	Mode
COMMAND	7	167.1000	167.9	169.7500	167.9	A
TACTICAL	4	166.7250	167.9	166.7250	167.9	A
AIR TO GROUND	14	169.8250		169.8250		A
AIR TO GROUND	15	169.9875		169.9875		A

9. Prepared By (Resource Unit Leader) ANGELA PARKER, RESL <i>Angela Parker</i>	Approved By (Planning Section Chief) WAYNE ROBBIE PSC2 <i>Wayne Robbie</i>	Date 07/12/2015	Time 2200
--	--	---------------------------	---------------------

Division/Group Assignment List (ICS 204 WF)

1. Incident Name:		3				
AGGIE CREEK		Branch:		Division/Group:		
2. Operational Period:		0800-2200				
Date/Time From: 07/13/2015 0800 MON		Date/Time To: 07/13/2015 2200 MON				
		STRUCTURE				
4. Operations Personnel						
OPERATIONS CHIEF - PLANNING		WILLIAM F KING MARK BERNAL		OPERATIONS CHIEF - FIELD		PAUL DELMERICO LEROY HOLGUIN (T)
DIVISION/GROUP SUPERVISOR		M. HOSTETLER J. HANSEN (T)		AIR ATTACK SUPERVISOR		M. STOUT; G. BEDDOW; G. DANIELS; A. DAMM (T)
5. Resources Assigned this Period						
Strike Team / Task Force / Resource Designator		LWD	Leader	Number Persons	Drop Off PT./Time	Pick Up PT./Time
CREW-T2-PLATTE CANYON 0-134		07/25	DEVIN MCDONALD	12	BASE/0800	BASE/2200
ENGINE T6 NORTH DAKOTA #62		07/13	CARSON KERR	3	BASE/0800	BASE/2200
ENGINE - T3 - SOA-DOF -E-219		07/17	RYAN VICE	3	BASE/0800	BASE/2200
ENG/T4 - FORREST FIRE #143		07/19	BEN ENGELHARDT	2	BASE/0800	BASE/2200
TFLD IA GROUP		07/16	GEORGE BROWN	1	BASE/0800	BASE/2200
ENGINE, T6-NORTH DAKOTA# 63 IA GROUP		07/13	AARON BUCHOLZ	3	BASE/0800	BASE/2200
ENGINE, T4- NORTH DAKOTA #64 IA GROUP		07/13	JON COOPER	4	BASE/0800	BASE/2200
PICKUP W/DRIV - F-250 DNB746 B17636 - METALLOGENY		07/04	KALA LAFFERTY	1	BASE/0800	BASE/2200
6. Control Operations/Work Assignments:						
Complete Structure Protection Plan Assess Structures and implement necessary prep work within fire planning area.						
7. Special Instructions:						
Ensure LCES, Test communications and utilize human repeaters and Air Attack if needed. Notify Op's prior to any ignitions. Establish and communicate trigger point to all personnel. Notify Planning Ops for Resource and Supply needs by 1600 for next shift. Anticipate ordering 2-3 days in advance. DIVS; report GPS locations of all water withdrawal locations (pumps, engines, aviation) to OSC2. IA Group to work with Structure Group Resources.						
8. Division/Group Communication Summary						
Function	Channel	RX Frequency N/W	RX Tone/NAC	TX Frequency N/W	TX Tone/NAC	Mode
TACTICAL	6	166.775	167.9	166.775	167.9	A
COMMAND	8	173.0375	167.9	167.3250	167.9	A
AIR TO GROUND	14	169.8250		169.8250		A
AIR TO GROUND	15	169.9875		169.9875		A
9. Prepared By (Resource Unit Leader)		Approved By (Planning Section Chief)			Date	Time
ANGELA PARKER RESL <i>Angela Parker</i>		WAYNE ROBBIE <i>Wayne Robbie</i>			07/12/2015	2200

AIR OPERATIONS SUMMARY

PREPARED BY: Galen Young *Ally*

PREPARED DATE/TIME: 07/12/15 2100

1. INCIDENT NAME: Aggie Creek

2. OPERATIONAL PERIOD DATE: 07/13/15

START TIME: 0900 END TIME: 2300 SUNRISE:0345 SUNSET:0008

3. REMARKS (Safety Notes, Hazards, Air Operations Special Equipment, etc.)

Thunderstorms, erratic winds. Low wires, cables, power lines.

Be aware of Alyeska Pipeline Co. flying the pipeline in rotor wing in AM. They will notify if in area.

Divisions contact Wickersham Helibase for all aviation needs include coordinates of possible helispot/medivac locations.

Possible smoke concerns.

Track all retardant usage and location if used. Wickersham Helibase 907-347-9613

4. MEDEVAC A/C:
H-4TH

5. TFR: 5/2492
Radius: 10 NIM
Altitude: 5000 MSL
Centerpoint: N 65 15 0
W 148 16 0
Freq: 120.1500

6. PERSONNEL	Phone	7. FREQUENCIES	AM	FM	8. FIXED-WING	# Avail / Type/ Make-Model / FAA N# / Base(s)
AOBD: Galen Young	575-574-8720	AIR/AIR FW:	120.150		Airtankers	Available through Dispatch
ASGS: Kent Wedin	575-538-1075	AIR/AIR RW:	121.050		Leadplanes	Available through Dispatch
ATGS: Mike Stout	661-877-7889	AIR/GRD: Pri AIR/GRD: Sec		169.8250 169.9875	ATBase +	
ATGS: Gerry Beddow	928-386-3743	COMMAND	See Com Plan		ATGS Aircraft	AA-N975AA Stout, Beddow AA-N249CP Daniel, Damm Fort Wainwright
ATGS: Gary Daniel ATGS(T): Antom Damm	602-499-5297 360-561-1989	DECK			AAB:	
HEB1:						
HEB2: Paul Borcharding	206-735-2321	Medical AIR/GRD		168.626 Tone 110.9		

9. HELICOPTERS (Use Additional Sheets As Necessary)

FAA N#	TY	MAKE/MODEL	BASE	AVAIL	START	REMARKS	FAA N#	TY	MAKE/MODEL	BASE	AVAIL	START	REMARKS
N173BH	3	A-Star	Wainwright	0900	1000								
N73HJ	2	Bell 212	Wainwright	0900	1000								
N611CK	1	S-61	Wainwright	0900	1000								
N191CH	1	BV-107	Wainwright	0900	1000								
N214TH	1	Bell 214	Wainwright	0900	1000								

10. TASK/MISSION/ASSIGNMENT (Type/Function Includes: Air Tactical, Retardant, Recon, Personnel Transport, Water Dropping, S&R, etc.)

TYPE/FUNCTION	NAME OF PERSONNEL OR CARGO (if applic) OR INSTRUCTIONS FOR TACTICAL AIRCRAFT	MISSION START	FLY FROM	FLY TO
Bucket drops per request	Division Sup. To request and coordinate with Air Attack or helibase.			
Recon-Flights	To be approved by OPS or AOB			
Cargo / Sling	Per Request from Div Sups, all sling loads / crew shuttles			
Ops Recon				
Div Sup Recon				
	DIPSITES			

HEALTH AND SAFETY MESSAGE

SAFETY* starts with *YOU

We are **ALL** accountable for **SAFE** behaviors

For Day Operations: July 12, 2015

INCIDENT: Aggie Creek

DATE: July 13, 2015

TIME: 1600

Major Hazards and Risks:

- **Driving & Traffic:** Alaska Highway 2; Pedestrians in camp and in and around structures (public).
- **Fatigue Management:** Take frequent breaks, stay hydrated and get good sleep.
- **Complacency:** Stay focused! Don't allow the thought of going home or to your next assignment cloud your focus!

Mop-Up & Rehab



- **TASK.....**What is to be done.....Strategy and tactics
- **PURPOSE.....**Why it is to be done.....Big picture.....who, what, when, where, why, etc.....
- **END STATE.....**How it should look when done....Quantify your expectations.....Leaders Intent

Thanks from your Safety Team!

Approved by:

Schmitt

**MAINTAIN YOUR ATTENTION TO
DETAIL AND FINISH THE JOB!!**



**MANAGE FATIGUE
REMEMBER -- FATIGUE IS
CUMULATIVE!!!!**

- Adequate Rest? Overwhelmed (in over your head)?
- Proper Nutrition? Driving too far?
- Personal Hygiene? Been out way to many days?

Complete the checklist for yourself. Be honest.

Make sure all systems are GO today.

Monitor your co-workers. Are they showing signs of fatigue?

Incident Action Plan Safety Analysis		Operational Period: Day Shift- July 13, 2015		Incident: Aggie Creek					
Identification of Hazards and Risk Assessment		Assignment: Multi-All (Suppression-Indirect, etc.)		Mission Objective(s): Safety of Incident Responders and Public					
Pre-mitigation		Mitigation(s), Warnings and Remedies		Post-mitigation					
Hazards	Probability	Severity	Risk Level	Division/Group Branch - Location	Mitigation(s), Warnings and Remedies	Probability	Severity	Risk Level	Acceptable Yes/No
Driving	Likely	Critical	Serious	ALL	Slowdown in fire area; observe speed limits; Lights on; Practice "Defensive Driving"; Use spotter when backing	Occasional	Significant	Minor	Yes
Foot Travel	Likely	Critical	Serious	ALL	Keep spacing while hiking; scout route of travel; continually scan surrounding and "take your time";	Occasional	Significant	Minor	Yes
Dehydration Heat Related Illness	Likely	Critical	Serious	ALL	Early recognition of heat of HEAT RELATED ILLNESS; Take frequent break; Drink fluids throughout shift; store extra water at drop points; eat snacks throughout the shift.	Occasional	Significant	Minor	Yes
Extreme Fire Behavior	Occasional	Catastrophic	Serious	A G T U	Establish "Trigger Points" to disengage Use "Risk Management" process in IRPG Share weather observations, i.e. T-storms, w/ all personnel; LCES	Rarely	Catastrophic	Moderate	Yes
Line Construction	Frequent	Critical	Critical	ALL	Ensure LCES is in place Use Downhill Line Checklist (IRPG pg. 8) Utilize Risk Management Process (IRPG pg. 1) Do not rely on aircraft as mode of transportation.	Occasional	Critical	Moderate	Yes
Wildlife (Bears, moose, etc)	Likely	Critical	Serious	ALL	No food in sleeping areas Do not leave food scraps on the fireline or spike camp; back haul away all food garbage daily Avoid surprising bears at close distance, make plenty of noise, look for bear sign Never run from a bear, stand upright and tall, don't bend over. Detour around areas where you see fresh animal carcasses or fresh bear scat Be alert for moose crossing roadways while driving. Never approach moose on the fireline; safely leave area	Rarely	Critical	Minor	Yes
Chainsaw Operations	Likely	Catastrophic	Critical	ALL	"Hazard Tree Guidelines" (IRPG pg. 22-23) Look up, down and around for hazard tree indicators. Only fell and buck trees within your expertise and training. Follow "Procedural Felling Operations" (IRPG pg. 79). Do not fell trees in high wind events.	Occasional	Catastrophic	Serious	Yes
Air Operations	Occasional	Catastrophic	Serious	ALL	Follow Aviation Watchout Situations (IRPG pg. 43) Don't plan on air resources for transport or re-supply. Directing Retardant and Bucket Drops (IRPG pg. 57) Be thoroughly briefed on aerial	Rarely	Catastrophic	Moderate	Yes

Incident Action Plan Safety Analysis		Operational Period: Day Shift- July 13, 2015		Incident: Aggie Creek			
Identification of Hazards and Risk Assessment		Assignment: Multi-All (Suppression-Indirect, etc.)		Mission Objective(s): Safety of Incident Responders and Public			
Pre-mitigation		Mitigation(s), Warnings and Remedies		Post-mitigation			
Hazards	Probability	Severity	Risk Level	Probability	Severity	Risk Level	Acceptable Yes/No

				ignition plans and ops.				
Ignition Operations	Likely	Critical	Serious	Only personnel trained in the use of each device will be authorized to use firing equipment. Ensure all personnel are aware of firing operation that may affect them, i.e. adjacent divisions. Wear appropriate PPE. Ensure aerial/ground ignition plans have been adequately developed and personnel are briefed.	Occasional	Critical	Moderate	Yes
Heavy Equipment	Likely	Catastrophic	Critical	Don't work down slope from equipment. Ensure eye contact with operator. Operator is the only person allowed on moving equipment; Ensure operators have and wear proper PPE; Provide ample distance between crews and equipment based on fuel type. Ensure operators have adequate communication; Maintain high level of situational awareness when working behind equipment.	Rarely	Catastrophic	Moderate	Yes
ATV/UTV Operations	Likely	Catastrophic	Critical	Ensure personnel have proper training/certification and utilize proper PPE(helmets, gloves, etc); UTV will be equipped with Roll Over Protection System (ROPS); drive slowly and only use if essential for operations.	Occasional	Critical	Moderate	Yes
Public	Likely	Catastrophic	Critical	Utilize Public Information Officers to keep public informed of risks; keep area closed, if possible, to general public travel; use liaison officers as necessary; use local law enforcement personnel for any necessary evacuations.	Occasional	Critical	Moderate	Yes
Mop-up and Fireline Rehab	Occasional	Critical	Moderate	Refer to mitigations for heavy equipment; refer to steep terrain mitigations; maintain proper spacing of 8'-10'; wear proper PPE; Do not work above or below personnel during rehab/mop-up operations; Alert crew personnel of rolling debris by yelling to affected individuals;	Rarely	Critical	Minor	Yes

Operations Section Chief	<i>[Signature]</i>	Date / Time:	7/12/2015
--------------------------	--------------------	--------------	-----------

INCIDENT RADIO COMMUNICATIONS PLAN (ICS 205)

1. Incident Name:		2. Date/Time Prepared:		3. Operational Period:		Date/Time To:	
AGGIE CREEK		Date: 07/11/2015 Time: 1058		0800-2200		07/13/2015 2200	
				MON		MON	

4. Basic Radio Channel Use:										
Zone Group	Ch #	Function	Channel Name/Trunked Radio System Talkgroup	Assignment	RX Freq	RX Tone/NAC	TX Freq	TX Tone/NAC	Mode (A,D, or M)	Remarks
	1	TACTICAL	TAC 1	DIVISION A,G	168.0500	167.9	168.0500	167.9	A	
	2	TACTICAL	TAC 2	DIVISION T	168.2000	167.9	168.2000	167.9	A	
	3	TACTICAL	TAC 3	DIVISION V	168.6000	167.9	168.6000	167.9	A	
	4	TACTICAL	TAC 4	DIVISION W	166.7250	167.9	166.7250	167.9	A	
	5	TACTICAL	TAC 5	DIV U	168.2500	167.9	168.2500	167.9	A	
	6	TACTICAL	TAC 6	STRUCTURE/IA	166.775	167.9	166.775	167.9	A	
	7	COMMAND	CMD 6	COMMAND 6	167.1000	167.9	169.7500	167.9	A	HAYSTACK MTN.
	8	COMMAND	CMD 7	COMMAND 7	173.0375	167.9	187.3250	167.9	A	WICKERSHAM DOME
	9	COMMAND	CMD 8	COMMAND 8	170.0500	167.9	164.5750	167.9	A	ICP
	11	COMMAND	DOF A	COMM W/ LOCAL	151.2850		159.2700	141.3	A	ESTER DOME
	12	COMMAND	DOF B	COMM W LOCAL	151.2950		159.3000	141.3	A	NANANA; IA ONLY
	13	TACTICAL	IA TAC 1	COMM W/LOCAL	159.3750		159.3750		A	IA ONLY
	14	AIR TO GROUND	A/G 6	A2G TACTICAL	169.8250		169.8250		A	PRIMARY
	15	AIR TO GROUND	A/G 8	A2G AIR ATTACK	169.9875		169.9875		A	
	16	AIR GUARD	AIR GUAR	AIR GUARD	168.6250	110.9	168.6250	110.9	A	EMERGENCY USE ONLY


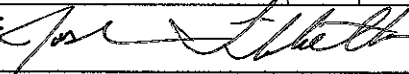
5. Special Instructions:

<p>6. Prepared By (Communications Unit Leader)</p>	<p>Name: RICK LAZO</p>
<p>Signature: </p>	<p>Date/Time: 07/11/2015 1058</p>



ICS 205

FINAL

Page 1 of 1

MEDICAL PLAN 206		FIRE NAME Aggie Creek		DATE PREPARED 07/12/15		WORK PERIOD 07/13/15					
AID STATIONS/EMT PLACEMENT											
NAME		LOCATION		PHONE		PARAMEDIC					
						YES		NO			
Mike Lund EMIF/ Robert Bacon EMPF		ICP		575-770-6694 / 907-371-5736		X					
Mike Poveda EMTF		Div. T		720-341-1897				X			
Matt Horton EMPF		Div. V		919-622-1295		X					
Melissa Brewer EMPF Ron Sandler EMPF		Div. U		503-428-8627/ 707-218-7824		X					
Aaron Seaman EMTF		Div. W		425-923-7440				X			
Brad Nelson EMTF		Div. G		816-244-1810				X			
Laura Belino EMT		Wickersham Dome Base Camp		509-860-1189				X			
M.ZastauskyEMT, K.WatsonEMP		Delta Ambo Div W		907-750-2521		X					
AMBULANCE SERVICES											
NAME		LOCATION		PHONE		PARAMEDIC					
						YES		NO			
Delta Ambulance		Div. W		907-750-2521		X					
Steese Fire/EMS		800 William C. Leary LN. Fairbanks, AK 99712		907-450-6504		X					
AIR AMBULANCE											
NAME		PHONE		TYPE OF AIRCRAFT		CAPABILITY					
INCIDENT AIRCRAFT		BY RADIO HELITAK		A-STAR 73BH 212 73HJ		1PT SITTING 1 PT Backboard					
GUARDIAN FLIGHT ALASKA (FIXED)		888-997-3822		KINGAIR 200/LEARJET 35		1 ALS/2 BLS					
STATE TROOPERS/ ARMY MAST		907-451-5100		BLACK HAWK		SHORT/LONG HAUL, ALS					
HOSPITALS											
HOSPITAL		LOCATION		TRAVEL TIME		PHONE		HELIPAD		BURN CENTER	
				AIR/GROUND				YES NO		YES NO	
FAIRBANKS MEMORIAL LEVEL 3 TRAUMA		1650 COWLES ST FAIRBANKS, AK 99701 N 64° 49.94, W 147° 44.52		30 MIN 1 HR		907-458-5555		X			
1 ST CARE CENTER CLINIC/URGENT CARE		1101 NOBLE ST FAIRBANKS, AK 99701 8 AM TO 8 PM, 7 DAYS		N/A 1 HR		907-459-3500				X	
PROVIDENCE ALASKA LEVEL 3 TRAUMA		3200 PROVIDENCE DR. ANCHORAGE, AK 99508 N 61° 50.09, W 149° 49.08		2 HRS 6 HRS		907-212-3111		X			
HARBORVIEW MEDICAL CENTER LEVEL 1 TRAUMA		325 9 TH AVE SEATTLE, WA 98104 N 47° 36.14, W 122° 19.21		3 HRS TOO FIX FAR		206-284-2876		X		X	
MEDL: Mike Lund and Robert Bacon 				Safety: 							

Medical Plan (ICS 206 WF)

1. Incident/Project Name AGGIE CREEK		2. Operational Period 0800-2200 Date/Time From: 07/13/2015 0800 Mon Date/Time To: 07/13/2015 2200 Mon	
6. Area Location Capability			
Branch Division/Group			
DIV. G	EMS Responders & Capability:	Brad Nelson/EMTF	
	Equipment Available On Scene:	Backboard, Trauma, BLS, O2	
	Medical Emergency Channel:	COMMAND 7	
	ETA For Ambulance to Hospital:		
	Air:	30 minutes	
	Ground:	2 hours	
	Approved Helispot:	TBD	
	Lat:	TBD	
Long:	TBD		
DIV. V	EMS Responders & Capability:	Matt Horton/EMPF	
	Equipment Available On Scene:	Backboard, ALS, Narcs, Trauma	
	Medical Emergency Channel:	COMMAND 7	
	ETA For Ambulance to Hospital:		
	Air:	30 minutes	
	Ground:	1 hour	
	Approved Helispot:	H-160	
	Lat:	N65° 14.652	
Long:	W148° 05.657		
DIV. U	EMS Responders & Capability:	Melissa Brewer EMP; Ron Sandler EMPF	
	Equipment Available On Scene:	Sked, ALS, Narcs, O2	
	Medical Emergency Channel:	COMMAND 7	
	ETA For Ambulance to Hospital:		
	Air:	30 minutes	
	Ground:	1 hour	
	Approved Helispot:	H-120	
	Lat:	N65° 15.766	
Long:	W148° 09.597		
DIV. W	EMS Responders & Capability:	Aaron Seaman/EMTF; Delta Ambulance	
	Equipment Available On Scene:	Sked, Trauma, BLS, O2, ALS, Narcs	
	Medical Emergency Channel:	COMMAND 7	
	ETA For Ambulance to Hospital:		
	Air:	30 minutes	
	Ground:	1 hour	
	Approved Helispot:	H-15	
	Lat:	N65° 13.281	
Long:	W148° 09.886		
DIV. T	EMS Responders & Capability:	Mike Poveda EMTF	
	Equipment Available On Scene:	Backboard, Trauma, BLS, O2	
	Medical Emergency Channel:	COMMAND 7	
	ETA For Ambulance to Hospital:		
	Air:	30 minutes	
	Ground:	1.5 hours	
	Approved Helispot:	TBD	
	Lat:	TBD	
Long:	TBD		
Wickersham Dome Base Camp/DP-20	EMS Responders & Capability:	Laura Belino	
	Equipment Available On Scene:	Medical Supplies, BLS, AED, Traction Splint, KED	
	Medical Emergency Channel:	COMMAND 7	
	ETA For Ambulance to Hospital:		
	Air:	30 minutes	
	Ground:	1 hour	
	Approved Helispot:	Helibase	
	Lat:	N65° 10.316	
Long:	W148° 05.784		
8. Prepared By (MEDL) 	9. Date/Time 07/12/15 2100	10. Reviewed By (Safety Officer) 	11. Date/Time 07/12/15 2100

Medical Incident Report

Use items one through nine to communicate situation to communications/dispatch.

1. CONTACT COMMUNICATIONS/DISPATCH

Ex: "Communications, Div. Alpha. Stand-by for Priority Medical Incident Report." (If life threatening request designated frequency be cleared for emergency traffic.)

2. INCIDENT STATUS: Provide incident summary and command structure

Nature of Injury/Illness		<i>Describe the injury (Ex: Broken leg with bleeding)</i>
Incident Name:		<i>Geographic Name + "Medical" (Ex: Trout Meadow Medical)</i>
Incident Commander:		<i>Name of IC</i>
Patient Care:		<i>Name of Care Provider (Ex: EMT Smith)</i>

3. INITIAL PATIENT ASSESSMENT: Complete this section for each patient. This is only a brief, initial assessment. Provide additional patient info after completing this 9 Line Report. See page 100 for detailed Patient Assessment.

Number of Patients:	Male/Female	Age:	Weight:
Conscious?	<input type="checkbox"/> YES	<input type="checkbox"/> NO = MEDEVAC!	
Breathing?	<input type="checkbox"/> YES	<input type="checkbox"/> NO = MEDEVAC!	
Mechanism of Injury: <i>What caused the injury?</i>			
Lat./Long. (Datum WGS84) <i>Ex: N 40° 42.45'x W 123° 03.24'</i>			

4. SEVERITY OF EMERGENCY, TRANSPORT PRIORITY

SEVERITY	TRANSPORT PRIORITY
<input type="checkbox"/> URGENT-RED Life threatening injury or illness. Ex: Unconscious, difficulty breathing, bleeding severely, 2°-3° burns more than 4 palm sizes, heat stroke, disoriented.	Ambulance or MEDEVAC helicopter. Evacuation need is IMMEDIATE.
<input type="checkbox"/> PRIORITY-YELLOW Serious injury or illness. Ex: Significant trauma, not able to walk, 2°-3° burns not more than 1-2 palm sizes	Ambulance or consider air transport if at remote location. Evacuation may be DELAYED.
<input type="checkbox"/> ROUTINE-GREEN Not a life threatening injury or illness. Ex: Sprains, strains, minor heat-related illness	Non-Emergency. Evacuation considered Routine of Convenience.

5. TRANSPORT PLAN:

Air Transport: (Agency Aircraft Preferred)			
<input type="checkbox"/> Helispot	<input type="checkbox"/> Short-haul/Hoist	<input type="checkbox"/> Life Flight	<input type="checkbox"/> Other
Ground Transport:			
<input type="checkbox"/> Self-Extract	<input type="checkbox"/> Carry-Out	<input type="checkbox"/> Ambulance	<input type="checkbox"/> Other

6. ADDITIONAL RESOURCE/EQUIPMENT NEEDS:

<input type="checkbox"/> Paramedic/EMT(s)	<input type="checkbox"/> Crew(s)	<input type="checkbox"/> SKED/Backboard/C-Collar
<input type="checkbox"/> Burn Sheet(s)	<input type="checkbox"/> Oxygen	<input type="checkbox"/> Trauma Bag
<input type="checkbox"/> Medication(s)	<input type="checkbox"/> IV/Fluid(s)	<input type="checkbox"/> Cardiac Monitor/AED
<input type="checkbox"/> Other (e.g., splints, rope rescue, wheeled litter)		

7. COMMUNICATIONS:

Function	Channel Name/Number	Receive (Rx)	Tone/NAC*	Transmit (Tx)	Tone/NAC*
<i>Ex: Command</i>	<i>Forest Rpt, Ch. 2</i>	<i>168.3250</i>	<i>110.9</i>	<i>171.4325</i>	<i>110.9</i>
COMMAND					
AIR-TO-GRND					
TACTICAL					

Ensure that Air Attack is contacted, if Air Medivac is used

8. EVACUATION LOCATION:

Lat./Long. (Datum WGS84) <i>EX: N 40° 42.45' x W 123° 03.24'</i>	
Patient's ETA to Evacuation Location:	
Helispot/Extraction Size and Hazards	

9. CONTINGENCY:

<p>Considerations: If primary options fail, what actions can be implemented in conjunction with primary evacuation method? Be thinking ahead...</p>

REMEMBER:

- **Confirm ETAs of resources ordered.**
- **Act according to your level of training.**
- **Be Alert. Keep Calm. Think Clearly. Act Decisively.**

**SOUTHWEST
INCIDENT MANAGEMENT
TEAM #5
RICH NIETO – INCIDENT COMMANDER**

July 12, 2015

To: All Incident Personnel for the Aggie Creek Fire (AK-FAS-511515)

From: Richard Nieto, Incident Commander

Subject: Ethical Behavior and Conduct

The Southwest Area Incident Management Team 5 is committed to the highest principles of ethical behavior and conduct. This team fully endorses the laws and policies regarding discrimination, harassment, hazing, and other inappropriate behavior, and will not tolerate misconduct in any form. We expect an attitude of mutual respect for all incident personnel and the public we serve.

As Incident Commander, I expect all personnel assigned to this incident to carry themselves with the highest level of conduct and integrity. As ambassadors, I encourage each of you to represent this Incident Management Team, as well as your agency in a professional and respectful manner.

I am committed to the policy that everyone is entitled to a safe work environment from the moment of dispatch until your return to the home unit. I expect and demand nothing less than work practices that reflect a "Safety First" attitude.

Your actions reflect upon all of us.

Sincerely,

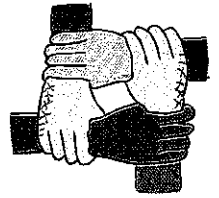
Richard Nieto

Richard Nieto
Incident Commander
Southwest Interagency Management Team #5



HUMAN RESOURCES MESSAGE

Aggie Creek Fire, Fairbanks, AK
July 13, 2015



ALASKA! Land of the Midnight Sun.

Sounds great, doesn't it? Not when you're trying to sleep after a long, hard day's work. Below are a few side effects of sleep deprivation and some tips to help you sleep better:

1. **Sleep Loss Impairs Judgment.** Lack of sleep can affect our interpretation of events. This hurts our ability to make sound judgments because we may not assess situations accurately and act on them wisely.
2. **Sleepiness Causes Accidents.** Studies show that sleep loss and poor-quality sleep also lead to accidents and injuries on the job. Sleep loss is also a big safety hazard every day on the road.
3. **Lack of Sleep Causes Fatigue.** Fatigue affects your physical and emotional state! It can have a negative impact on your concentration, your conduct, and speech.

TIPS

1. Cut back on coffee, tea, chocolate, soft drinks, and any medications that contain caffeine prior to bedtime.
2. Ban electronic devices, including cell phones, prior to sleep. The main problem is that the light emitted by electronic devices contains a great deal of blue - this means it has a more stimulating effect. Also, when we use our cell phones as alarm clocks, we tend to worry that the battery might die and we won't wake up in time. This worry can impact the quality of sleep. Try an old fashioned battery powered alarm clock.

~TRAINING MESSAGE~

The roster indicates nearly 50 trainees on the incident, but only about 15 have signed in with Training Specialist. If you don't document your training, you won't receive credit. Don't delay – see Jim or Gina to obtain the Incident Training Data Form. Remember to stop by the training office before you Demob!!!!

Thought for the Day: "The most common way people give up their power is by thinking they don't have any." -Alice Walker

TENTATIVE RELEASE
Aggie Creek US-AK-FAS-500515

MONDAY, 7/13/2015

CREWS

C-26	800 (HC2)	Crew T2-13067-Wildfire
C-38	830 (HC2)	North Pacific Forestry - 13114
C-39	900 (HC2)	North Pacific Forestry - 13115
C-40	930 (HC2)	MQ Franco Reforestation 13129

OVERHEAD

O-40	800 (HEQB)	Willoughby, Jon A.
O-46	815 (TFLD)	Wanderaas, David
O-45	1800 (TFLD)	Jessop, Chris

TUESDAY 7/14/2015

EQUIPMENT

E-127	930 (PU)	Chevy VIN 9803
E-128	1000 (PU)	Ford V4744
E-131	1030 (BUS)	First Student Bus V2220
E-132	1100 (PU)	Pick Up with Driver Charles Mayo

OVERHEAD

O-25	800 (EMPF)	Sandler, Ronald
O-53	815 (FOBS)	McFarland, Cody
O-68	830 (SEC1)	Mills, Michael
O-69	845 (SEC1)	Kelly, Christopher

WEDNESDAY 7/15/2015

CREWS

C-31	800 (HC2)	Oregon 13047
C-33	815 (HC2)	Oregon 13046
C-58	830 (HC2)	Patrick C-58

EQUIPMENT

E-67	800 (ENG6)	Big State Wildfire GSB187
------	------------	---------------------------

OVERHEAD

O-1.25	800 SPUL	Dybing, Peter
O-1.52	815 OSC2	Boomer, Michael
O-24	830 EMTF	Seaman, Aaron
O-58	900 SEC1	Nicely, David J
O-66	915 SECM	Hedges, George D
O-72	930 HECM	Anderson, Karin L
O-73	945 HECM	Gabrielson, Kevin
O-79	1000 EMPF	Brewer, Melissa
O-85	1015 SOF2	Kemp, Gary
O-109	1030 COMT	Harness, Scott

Aggie Creek Fire

Telephone List

7/13/2015

Demob: 907-451-1271

Demob Fax: 907-451-1253

Plans: 907-451-1238

Finance: 907-451-1278

IC: 907-451-1247

Ordering Fax: 907-451-1231

INFO: 907-451-1206

COMP/Claims 907-451-1284

Supply Track Phone: 907-750-8236

Supply (Valerie Williams): 575-751-4716

Base Camp Food (Hess): 619-495-9276

Base Camp Supply (John): 907-750-7816

Base Camp Mgr. (Harley): 907-347-3580

Security SECM (T) (Ramona): 575-361-4402

Security SECM (George Hedges): 205-269-0728

LOGS: 907-451-1279

IMET (Christian): 907-250-5541

COMMO Cell: 907-687-5918

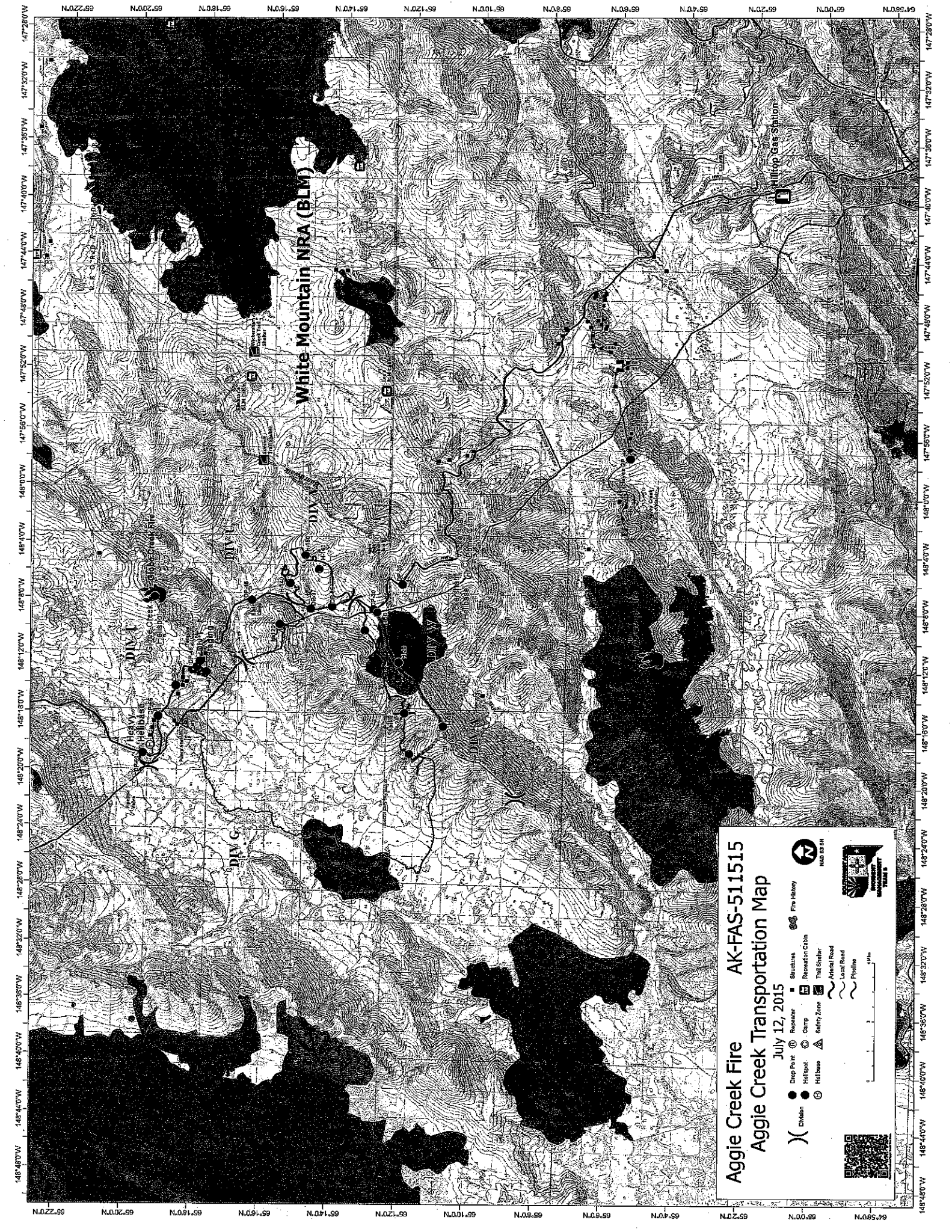
COMMO Landline: 907-451-1203

Aggie Creek Fire

Cell Phone List

7/13/2015

<u>IC:</u>	<u>Rich Nieto</u>	<u>907-687-3265</u>
<u>IC:</u>	<u>John Pearson</u>	<u>907-388-6448</u>
<u>Plans:</u>	<u>Wayne Robbie</u>	<u>907-378-4176</u>
<u>Liaison:</u>	<u>Scott Cooke</u>	<u>907-388-2678</u>
<u>SOPL:</u>	<u>Bob Lineback</u>	<u>907-371-0179</u>
<u>Air OPS:</u>	<u>Galen Young</u>	<u>907-371-7241</u>
<u>Air Support:</u>	<u>Kent Wedin</u>	<u>907-378-8211</u>
<u>Supply:</u>	<u>Valerie Williams</u>	<u>907-388-0961</u>
<u>Communications:</u>	<u>Rick Lazo</u>	<u>907-371-5626</u>
<u>Medical:</u>	<u>Robert Bacon</u>	<u>907-371-5736</u>



Aggie Creek Fire **AK-FAS-511515**

Aggie Creek Transportation Map

July 12, 2015

- Ditch
- Drop Point
- Hillpost
- Camp
- Hillshade
- Safety Zone

- Structure
- Reservoir
- Rosebush Cabin
- Trail Shelter
- Arched Road
- Leak Road
- Pipeline

