



SOUTHWEST AREA IMT 5
RICHARD NIETO IC
TUESDAY 7/14/15
DAYSHIFT 0800 -2200

Aggie Creek

AK-FAS-511515

Fire Code JTZ2

State Code 73-511515

FS Code: PNJTZ2 1502

Hayes Creek

AK-FAS-511557

Fire Code JT3U

State Code 73-511557

FS Code: PNJT3U 1502

AGGIE CREEK FIRE QR CODES

DROPBOX (APPLE)



<http://tinyurl.com/AggieCreek>

GOOGLE DRIVE (ANDROID)



<http://tinyurl.com/Aggie-Creek-Fire-Maps>

INCIDENT OBJECTIVES (ICS 202)

1. Incident Name:		2. Operational Period: 0800-2200	
AGGIE CREEK		Date/Time From: 07/14/2015 0800 TUE	Date/Time To: 07/14/2015 2200 TUE
3. Objective(s):			
Value at Risk			
<ul style="list-style-type: none"> • Tatalina Subdivision. • Alyeska Trans-Alaska Pipeline and associated infrastructure (valves, pump stations, snow pad). • Elliott Highway corridor and structures. • Native allotments and improvements. • Communities of Hayes, Himalaya, and Haystack. • BLM cabins and communication sites. 			
Incident Objectives			
<ul style="list-style-type: none"> • Fire personnel and public safety is fully achieved through the application and implementation of sound risk management analysis for incident activities. • Values at risk are protected from adverse fire and incident management actions. • Traffic along the Elliott Highway is minimally disrupted. • Native allotments are protected with priority on structure protection. • Information and intelligence is gathered and collected on infrastructure and sensitive resources for ongoing fire management planning and long-term analysis. 			
Incident Requirements:			
<ul style="list-style-type: none"> • Utilize appropriate suppression tactics to minimize negative impacts to natural, wildlife, and cultural resources. • Incident personnel support area initial attack as requested by the host agency. • Provide fire and smoke related information to the media and residents. • Foster and maintain relationships between partners, agencies, and communities currently and potentially affected by the fire. • Cost containment is factored into risk management decision making. 			
4. Operational Period Command Emphasis:			
General Situational Awareness:			
See Attached Safety Plan			
5. Site Safety Plan Required? Yes <input type="checkbox"/> No <input checked="" type="checkbox"/>			
Approved Site Safety Plan(s) Located at:			
6. Incident Action Plan (the items checked below are included in this Incident Action Plan):			
<input checked="" type="checkbox"/> ICS 202	<input type="checkbox"/> ICS 207	Other Attachments:	
<input checked="" type="checkbox"/> ICS 203	<input type="checkbox"/> ICS 208	<input checked="" type="checkbox"/> MEDICAL INCIDENT	
<input checked="" type="checkbox"/> ICS 204	<input checked="" type="checkbox"/> ICS 220	<input checked="" type="checkbox"/> HUMAN RESOURCE	
<input checked="" type="checkbox"/> ICS 205	<input checked="" type="checkbox"/> Map/Chart	<input checked="" type="checkbox"/> PHONE LIST	
<input type="checkbox"/> ICS 205A	<input checked="" type="checkbox"/> Weather Forecast/Tides/Currents	<input checked="" type="checkbox"/> UNIT LOG	
<input checked="" type="checkbox"/> ICS 206			
7. Prepared by: WAYNE ROBBIE	Position/Title: PSC2	Signature: <i>Wayne Robbie</i>	
8. Approved by Incident Commander:		Signature: <i>Richard Nieto</i>	
Name: RICHARD NIETO, ICT2		Date/Time: 07/13/2015 2200	
ICS 202	IAP Page	<i>Rich Nieto</i>	

ORGANIZATION ASSIGNMENT LIST (ICS 203)

1. Incident Name:		2. Operational Period: 0800-2200	
AGGIE CREEK		Date/Time From: 07/14/2015 0800 TUE	Date/Time To: 07/14/2015 2200 TUE
3. Incident Commander(s) and Command Staff:		6. Logistics Section:	
IC/UC	RICHARD NIETO / JEFF ANDREWS (T) JOHN PIERSON, DEPUTY	CHIEF	DOUGLAS J WILLIAMS MARK CATRON, MARGIE GUZMAN (T)
SAFETY OFFICER	ALLAN R SETZER JOSHUA TIBBETTS (T)	MEDICAL UNIT	MIKE LUND ROBERT BACON
INFORMATION OFFICER	IRIS ESTES; HOLLY KRAKE (T)	SUPPLY UNIT	VALERIE WILLIAMS
LIAISON OFFICER	SCOTT COOKE AARON BALDRIDGE	FACILITIES UNIT	RUSSELL FOX
SECURITY MANAGER	RAMONA WHITE (T) GEORGE HEDGES	GROUND SUPPORT UNIT	TONY ARMIJO
		COMMUNICATIONS UNIT	RICK LAZO
		FOOD UNIT	
		RECEIVING AND DISTRIBUTION	T. WITHERS; L.DYER (T)
		ORDERING UNIT MANAGER	P.HERSEY; J.COLE (T);S.FLETCHER (T)
4. Agency/Organization Representative(s):		7. Operations Section:	
Agency/Organization	Name	OPS SECTION CHIEF - PLANNING	BILL KING MARK BERNAL (T)
STATE OF ALASKA DCNR	PAUL MAKI	OPS SECTION CHIEF	PAUL DELMERICO, JAMES VILLARD LEROY HOLGUIN (T)
ALASKA DEPT OF FISH AND GAME	BILL MORRIS	DIVISION A	N.NOZIE; C.JESSOP (T)
FAIRBANKS NORTH STAR BOROUGH EMS DIRECTOR	DAVID GIBBS	DIVISION G	BEAU KIDD
ALASKA STATE TROOPER	LT LONNY PISCOYA SGT MIKE ROBERTS	DIVISION T	TERRANCE GALLEGOS
BLM	LENORE HEPPLER	DIVISION U	TIM FONDRIEST TRENTON GIRARD (T)
IARR	R-5 FREDDIE ESPINOZA; ANGELA SANCHEZ R-3 ALAN SINCLAIR; FRANK BEDONIE	DIVISION V	JASEN A TEAL
		DIVISION W	DAVID MARTINEZ
		STRUCTURE GROUP	MIKE HOSTETLER JEREMY HANSEN (T)
5. Planning Section:		7b. Air Operations Branch:	
CHIEF	WAYNE A ROBBIE LANN MOORE, DEPUTY	AIR OPS BRANCH DIRECTOR	GALEN YOUNG
DEMOBILIZATION UNIT	ROBERT CORDTS GERALD SANCHEZ (T)	AIR SUPPORT SUPERVISOR	KENT WEDIN
RESOURCES UNIT	ANGELA PARKER; KEVIN CONN	HELIBASE MANAGER	PAUL BORCHERDING
SITUATION UNIT	J.HICKERSON; E.YOUNGER (T)	AIR ATTACK SUPERVISOR	M.STOUT; G.BEDDOW; G.DANIEL; A.DAMM
GIS SPECIALIST	MARILYN RUTH PORTER PHIL WATTS	8. Finance/Administration Section:	
FIRE BEHAVIOR ANALYST	GALEN ROESLER	CHIEF	BILLY M ZAMORA WANDA J GALLEGOS (T)
STRATEGIC OP PLANNER	BOB LINEBACK; BILL MILLER	TIME UNIT	
INCIDENT METEOROLOGIST	CHRISTIAN CASSELL	COST UNIT	CAROL CHAVEZ
COMPUTER SPECIALIST	BRUCE JULAGAY CHRIS DAWSON	TIME UNIT	S. IMLER-JACQUEZ; P.ATTALA
RESOURCE ADVISOR	NOAH LLOYD	EQUIPMENT TIME	B.PYSHER; J.HICKMAN (T)
HRSP/TRAINING	G.MELCHOR; J.MAES		
9. Prepared By:	Name: ANGELA PARKER	Position/Title: RESL	Signature:
ICS 203	IAP Page	Date/Time: 07/13/2015 2030	



INCIDENT Weather Forecast



FORECAST NO: 18

NAME OF FIRE: Aggie Creek

PREDICTION FOR: DAY SHIFT

UNIT: Alaska DNR

SHIFT DATE: Tuesday, July 14th, 2015

SIGNED:

TIME AND DATE

Christian Cassell
Incident Meteorologist

FORECAST ISSUED: 8:00 PM Monday, July 13th, 2015

WEATHER DISCUSSION:

Showers and isolated thunderstorms will become more widespread through the day. A significant wetting rain is expected, with amounts ranging anywhere between three-tenths and 1 inch of rain through Wednesday. The high temperature and lowest humidity values are likely to be experienced during the morning hours before the more widespread rain develops and cools the atmosphere.

WEATHER FORECAST FOR TODAY (TUESDAY):

WEATHER: Rain showers, becoming more widespread through the day. Isolated thunderstorms.

TEMPERATURES: Highs 58-65.

MINIMUM RELATIVE HUMIDITY: 60-70%, then increasing through the day to 80-100% by evening.

20 FT WINDS:

RIDGETOP – Southwest 5 to 9 mph.

SLOPE/VALLEY – Southwest 3 to 6 mph.

STABILITY/INVERSION: Inversion lifting by mid-morning.

LAL: 2

CHANCE OF WETTING RAIN: Near 100%

TONIGHT (TUESDAY NIGHT):

Periods of rain. Lows 47-54. Maximum RH 90-100%. CWR: Near 100%

OUTLOOK FOR WEDNESDAY:

Rain...likely ending in the afternoon. Partial clearing possible in the evening. Highs 56-65. Minimum RHs 50-60%. Southwest winds 5 to 9 mph ridges, 3 to 6 mph slopes/valleys. CWR: 90%

EXTENDED FORECAST (THURSDAY-SATURDAY):

Thursday: Mostly cloudy. Areas of smoke. Highs 62-68. Lows 49-54. Minimum RH 39-47%. Southwest wind 5-10 mph.

Friday: Mostly cloudy. A chance of showers. Areas of smoke. Highs 62-68. Lows 49-54. Minimum RH 44-50%. Southwest wind 5 -10 mph.

Saturday: Mostly cloudy. A chance of showers. Areas of smoke. Highs 62-68. Lows 49-54. Minimum RH 44-50%. Southwest wind 3 - 7 mph.

EXTRA INFORMATION:

Today's Maximum/Minimum Conditions (Sunday, July 12th, 2015):

Fairbanks (433 feet): Temp – 76F. Relative Humidity – 33%. Wind – E 15 G 23mph.

Alaska Portable 6 (2290 feet): Temp – 71F. Relative Humidity – 45%. Wind – SE 7 G16 mph.

Caribou Peak (2517 ft): Temp – 70F. Relative Humidity – 37%. Wind – ENE 8 G21 mph.

Chatanika (1626 ft): Temp – 75F. Relative Humidity – 42%. Wind – E 10 G20 mph.

Wickersham Dome (2229 feet): Temp – 69F. Relative Humidity – 41% Wind – ENE 6 G15 mph.

FIRE BEHAVIOR FORECAST

FORECAST NUMBER: 20

TYPE OF FIRE: Wildland Fire

FIRE NAME: Aggie Creek

OPERATIONAL PERIOD: Day Shift, July 14, 2015

DATE ISSUED: July 13, 2015

TIME ISSUED: 2100

UNIT: Alaska DNR

SIGNED: /s/ Galen Roesler FBAN 

INPUTS

WEATHER SUMMARY:

Scattered showers and isolated thunderstorms developing by afternoon.

See attached Fire Weather Forecast.

OUTPUTS

FIRE BEHAVIOR

GENERAL:

Activity yesterday was influenced by clouds, cool temperatures, and high relative humidity. These conditions are expected to continue along with the addition of rain showers. This combination of weather factors will further reduce fire behavior from what we have experienced over the past couple days. Expect smoldering with isolated areas of low intensity fire in duff and surface fuels. Very isolated torching will continue where there is surface heat in black spruce. There is still a lot of heat remaining in parts of the fire. Because fuels are so dry, there may be isolated areas of low to moderate intensity surface fire before the onset of rain.

Thunderstorms are in the forecast. Watch for the possibility of strong outflow winds.

SPECIFIC:

Divisions A, G, & T: Most of the heat in the fire area remains in these divisions. Expect smoldering with isolated areas of creeping in duff and surface fuels.

Divisions U, V, & W: Fire behavior will be minimal. Expect scattered smoldering in duff and surface fuels.

Globe Creek and Hayes Fires: No activity or spread anticipated.

Initial Attack: Expect low intensity surface fire and limited spread on new fires.

Alaska Portable #6 RAWWS (forecasted): FFMC 61.5 Low, ISI .8 Low, BUI 84.2 High, FWI 3.5 Low

AIR OPERATIONS:

There may be some areas of limited visibility early, due to smoke.


SAFETY:

Even though fire behavior has decreased, don't let your guard down. Watch for fire weakened green trees and snags. **Maintain Your Situational Awareness.**

Division/Group Assignment List (ICS 204 WF)

1. Incident Name:			3.			
AGGIE CREEK			Branch:		Division/Group:	
2. Operational Period: 0800-2200			DIVISION A			
Date/Time From: 07/14/2015 0800 TUE		Date/Time To: 07/14/2015 2200 TUE				
4. Operations Personnel						
OPERATIONS CHIEF - PLANNING		WILLIAM F KING MARK BERNAL (T)		OPERATIONS CHIEF - FIELD		PAUL DELMERICO LEROY HOLGUIN (T)
DIVISION/GROUP SUPERVISOR		NATE NOZIE CHRIS JESSOP (T)		AIR ATTACK SUPERVISOR		M.STOUT; G.BEDDOW; G.DANIELS; A..DAMM (T)
5. Resources Assigned this Period						
Strike Team / Task Force / Resource Designator		LWD	Leader	Number Persons	Drop Off PT./Time	Pick Up PT./Time
CREW- T2- PLATTE CANYON O-134		07/25	DEVIN MCDONALD	12	BASE/0800	BASE/2200
SOF2		07/23	JONATHAN LEE	1	BASE/0800	BASE/2200
HEQB			JOSH TAYLOR	1	BASE/0800	BASE/2200
DOZER - D8 CATERPILLER - V:12312 - MIDDLE FORK		08/01	JOSHUA RAY	2	BASE/0800	BASE/2200
DOZER/T1 - TEREX - VIN: 64294 - BOB GREEN & SONS				1	BASE/0800	BASE/2200
EMPF		07/16	BRADLEY W NELSON	1	BASE/0800	BASE/2200
6. Control Operations/Work Assignments:						
Construct dozer line on ridge top heading southwest of H30. Utilize aviation resource to delay fire from approaching ridge with dozer line construction to protect subdivision to the south.						
7. Special Instructions:						
<ol style="list-style-type: none"> 1. Ensure LCES, Test communications and utilize human repeaters and Air Attack if needed. 2. Notify Op's prior to any ignitions. Establish and communicate trigger points to all personnel. 3. Familiarize yourself with Management Action Points (M.A.P.'s) associated with your division, and be prepared to take appropriate actions. 4. DIVS; report GPS locations of all water withdrawal locations (pumps, engines, aviation) to OSC2. 5. Notify Planning Ops for Resource and Supply needs by 1600 for next shift. Anticipate ordering 2-3 days in advance. 						
8. Division/Group Communication Summary						
Function	Channel	RX Frequency N/W	RX Tone/NAC	TX Frequency N/W	TX Tone/NAC	Mode
COMMAND	7	167.1000	167.9	169.7500	167.9	A
TACTICAL	1	168.0500	167.9	168.0500	167.9	A
AIR TO GROUND	14	169.8250		169.8250		A
AIR TO GROUND	15	169.9875		169.9875		A
9. Prepared By (Resource Unit Leader)			Approved By (Planning Section Chief)		Date	Time
ANGELA PARKER RESL			WAYNE ROBBIE PSC2 <i>By [Signature]</i>		07/13/2015	2200

Division/Group Assignment List (ICS 204 WF)

1. Incident Name:			3.			
AGGIE CREEK			Branch:		Division/Group:	
2. Operational Period: 0800-2200			DIVISION G			
Date/Time From: 07/14/2015 0800 TUE		Date/Time To: 07/14/2015 2200 TUE				
4. Operations Personnel						
OPERATIONS CHIEF - PLANNING		WILLIAM F KING MARK BERNAL (T)		OPERATIONS CHIEF - FIELD		PAUL DELMERICO LEROY HOLGUIN (T)
DIVISION G		BEAU KIDD		AIR ATTACK SUPERVISOR		M.STOUT; G.BEDDOW; G.DANIELS; A..DAMM (T)
5. Resources Assigned this Period						
Strike Team / Task Force / Resource Designator		LWD	Leader	Number Persons	Drop Off PT./Time	Pick Up PT./Time
CREW - T1 - MODOC IHC		07/25	WILLIE ALMAND	20	BASE/0800	BASE/2200
CREW - T1 - REDDING IHC		07/26	DANIEL MALLIA	20	BASE/0800	BASE/2200
CREW - T1 - NMCIF - MT. TAYLOR IHC		07/18	CHRISTIAN C BRASHEARS	19	BASE/0800	BASE/2200
CREW - T1 - CARSON HOTSHOTS IHC		07/16	RICHARD SACK	21	BASE/0800	BASE/2200
CREW - T1 - MENDOCINO IHC		07/26	CHRISTOPHER R MARKEY	20	BASE/0800	BASE/2200
CREW - T1 - FEATHER RIVER IHC (CREW 3) (CA-PNF)		07/26	ROBERT DANIELS	20	BASE/0800	BASE/2200
TRACKED UV - NODWELL -VIN:16069 - REMOTE TRANSPOR		07/18	TIM KIEHL	1	BASE/0800	BASE/2200
SOF2		07/16	PHILLIP ALLAN SPOR	1	BASE/0800	BASE/2200
EMPF		07/16	MICHAEL POVEDA	1	BASE/0800	BASE/2200
6. Control Operations/Work Assignments:						
Construct hand line from Division G/T break to Tatalina River to protect the Alyeska Trans Alaska pipeline infrastructure and Elliott Highway.						
7. Special Instructions:						
<ol style="list-style-type: none"> 1. Ensure LCES, Test communications and utilize human repeaters and Air Attack if needed. 2. Notify Op's prior to any ignitions. Establish and communicate trigger points to all personnel. 3. Familiarize yourself with Management Action Points (M.A.P.'s) associated with your division, and be prepared to take appropriate actions. 4. DIVS; report GPS locations of all water withdrawal locations (pumps, engines, aviation) to OSC2. 5. Notify Planning Ops for Resource and Supply needs by 1600 for next shift. Anticipate ordering 2-3 days in advance. 						
8. Division/Group Communication Summary						
Function	Channel	RX Frequency N/W	RX Tone/NAC	TX Frequency N/W	TX Tone/NAC	Mode
TACTICAL	6	166.775	167.9	166.775	167.9	A
COMMAND	8	173.0375	167.9	167.3250	167.9	A
AIR TO GROUND	14	169.8250		169.8250		A
AIR TO GROUND	15	169.9875		169.9875		A
9. Prepared By (Resource Unit Leader)			Approved By (Planning Section Chief)		Date	Time
ANGELA PARKER RESL			WAYNE ROBBIE PSC2 		07/13/2015	2200

Division/Group Assignment List (ICS 204 WF)

1. Incident Name:			3.			
AGGIE CREEK			Branch:		Division/Group:	
2. Operational Period: 0800-2200			DIVISION T			
Date/Time From: 07/14/2015 0800 TUE		Date/Time To: 07/14/2015 2200 TUE				
4. Operations Personnel						
OPERATIONS CHIEF - PLANNING		WILLIAM KING; MARK BERNAL		OPERATIONS CHIEF - FIELD		PAUL DELMERIC; LEROY HOLQUIN (T)
DIVISION/GROUP SUPERVISOR		TERRANCE GALLEGOS;		AIR ATTACK SUPERVISOR		M.STOUT; G.BEDDOW; G.DANIELS; A. DAMM (T)
5. Resources Assigned this Period						
Strike Team / Task Force / Resource Designator		LWD	Leader	Number Persons	Drop Off PT./Time	Pick Up PT./Time
CREW - T2 - OREGON WOODS INC #31		07/14	SCOTT POLHAMUS	20	BASE/0800	BASE/2200
CREW -T2-BUCKLAND T-2		07/25	JOHN GEARY	20	BASE/0800	BASE/2200
CREW - T2 - ST. MICHAEL		07/24	GEORGE KOBUK	20	BASE/0800	BASE/2200
TRACKED UV- GILLMORE #149		07/20	MCFADDEN BART	1	BASE/0800	BASE/2200
FORESTRY MULCHER/MASTICATOR - AK REMOTE BUILDERS		07/18	TONY BUERGE	1	BASE/0800	BASE/2200
WATER TENDER -NSFD #32		07/25	N.PARKS; C.INGLEE	1	BASE/0800	BASE/2200
TFLD		07/17	KEVIN RIGGS(T)	1	BASE/0800	BASE/2200
SOF2		07/13	GARY KEMP	1	BASE/0800	BASE/2200
EMPF		07/17	MATTHEW M HORTON	1	BASE/0800	BASE/2200
6. Control Operations/Work Assignments:						
Mop up and hold containment lines to secure fire perimeter to protect Alyeska Trans-Alaska Pipeline infrastructures, Globe Creek, Tatalina subdivision, and Elliott Highway.						
7. Special Instructions:						
<ol style="list-style-type: none"> 1. Ensure LCES, Test communications and utilize human repeaters and Air Attack if needed. 2. Notify Op's prior to any ignitions. Establish and communicate trigger points to all personnel. 3. Familiarize yourself with Management Action Points (M.A.P.'s) associated with your division, and be prepared to take appropriate actions. 4. DIVS; report GPS locations of all water withdrawal locations (pumps, engines, aviation) to OSC2. 5. Notify Planning Ops for Resource and Supply needs by 1600 for next shift. Anticipate ordering 2-3 days in advance. 						
8. Division/Group Communication Summary						
Function	Channel	RX Frequency N/W	RX Tone/NAC	TX Frequency N/W	TX Tone/NAC	Mode
TACTICAL	2	168.2000	167.9	168.2000	167.9	A
COMMAND	7	167.1000	167.9	169.7500	167.9	A
AIR TO GROUND	14	169.8250		169.8250		A
AIR TO GROUND	15	169.9875		169.9875		A
9. Prepared By (Resource Unit Leader)			Approved By (Planning Section Chief)		Date	Time
ANGELA PARKER, RESL			WAYBE ROBBIE PSC2 <i>By [Signature]</i>		07/13/2015	2200

Division/Group Assignment List (ICS 204 WF)

1. Incident Name:			3.			
AGGIE CREEK			Branch:		Division/Group:	
2. Operational Period: 0800-2200			DIVISION U			
Date/Time From: 07/14/2015 0800 TUE		Date/Time To: 07/14/2015 2200 TUE				
4. Operations Personnel						
OPERATIONS CHIEF - PLANNING		WILLIAM F KING MARK BERNAL (T)		OPERATIONS CHIEF - FIELD		PAUL DELMERICO LEROY HOLGUIN (T)
DIVISION/GROUP SUPERVISOR		TIM FONDRIEST TRENTON GIRARD (T)		AIR ATTACK SUPERVISOR		M.STOUT; G.BEDDOW; G.DANIELS; A.DAMM (T)
5. Resources Assigned this Period						
Strike Team / Task Force / Resource Designator		LWD	Leader	Number Persons	Drop Off PT./Time	Pick Up PT./Time
CREW-T2- OREGON WOODS #33		07/14	CHARLES WATKINS	20	BASE/0800	BASE/2200
PATRICK C-58		07/14	DAMION LOWTHER	20	BASE/0800	BASE/2200
CREW - T2 - FAIRBANKS - 1		07/18	ISAAC B SOLOMON	17	BASE/0800	BASE/2200
CREW - T2 - MT. VILLAGE		07/25	LUKE TUNUTMOAK	20	BASE/0800	BASE/2200
EMPF		07/14	M.BREWER	1	BASE/0800	BASE/2200
SOF2		07/23	ALAN VANDIVER	1	BASE/0800	BASE/2200
6. Control Operations/Work Assignments:						
Maintain sprinkler system, mop-up, and utilize water to control perimeter and increase protection to Alyeska Trans-Alaska Pipeline, Globe Creek, Tatalina structures, and Elliott Highway.						
7. Special Instructions:						
<ol style="list-style-type: none"> 1. Ensure LCES, Test communications and utilize human repeaters and Air Attack if needed. 2. Notify Op's prior to any ignitions. Establish and communicate trigger points to all personnel. 3. Familiarize yourself with Management Action Points (M.A.P.'s) associated with your division, and be prepared to take appropriate actions. 4. DIVS; report GPS locations of all water withdrawal locations (pumps, engines, aviation) to OSC2. 5. Notify Planning Ops for Resource and Supply needs by 1600 for next shift. Anticipate ordering 2-3 days in advance. 						
8. Division/Group Communication Summary						
Function	Channel	RX Frequency N/W	RX Tone/NAC	TX Frequency N/W	TX Tone/NAC	Mode
TACTICAL	5	168.2500	167.9	168.2500	167.9	A
COMMAND	7	167.1000	167.9	169.7500	167.9	A
AIR TO GROUND	14	169.8250		169.8250		A
AIR TO GROUND	15	169.9875		169.9875		A
9. Prepared By (Resource Unit Leader)			Approved By (Planning Section Chief)		Date	Time
ANGELA PARKER, RESL			WAYNE ROBBIE PSC2 <i>By [Signature]</i>		07/13/2015	2200

Division/Group Assignment List (ICS 204 WF)

1. Incident Name:			3.			
AGGIE CREEK			Branch:		Division/Group:	
2. Operational Period: 0800-2200			DIVISION V			
Date/Time From: 07/14/2015 0800 TUE		Date/Time To: 07/14/2015 2200 TUE				
4. Operations Personnel						
OPERATIONS CHIEF - PLANNING		WILLIAM F KING MARK BERNAL (T)		OPERATIONS CHIEF - FIELD		PAUL DELMERICO LEROY HOLGUIN (T)
DIVISION/GROUP SUPERVISOR		JASEN A TEAL		AIR ATTACK SUPERVISOR		M.STOUT;G.BEDDOW;G.DANIELS; A.DAMM (T)
5. Resources Assigned this Period						
Strike Team / Task Force / Resource Designator		LWD	Leader	Number Persons	Drop Off PT./Time	Pick Up PT./Time
CREW - T2IA - COBRAS - 4		07/23	J GUADALUPE MACIEL TORRES	22	BASE/0800	BASE/2200
CREW - T2 - FORT YUKON #2		07/25	DONALD CARROLL SR	20	BASE/0800	BASE/2200
SOF2		07/23	ALAN VANDIVER	1	BASE/0800	BASE/2200
STCR		07/20	ROBERT SOLLAMI	1	BASE/0800	BASE/2200
EMTF		07/14	AARON SEAMAN	1	BASE/0800	BASE/2200
DELTA AMBULANCE		07/15	W/ SEAMAN	1	DP 37/0800	BASE/2200
6. Control Operations/Work Assignments:						
Patrol, mop-up, and secure fireline to prevent further spread to Alyeska Trans-Alaska Pipeline, Elliott Highway corridor, and White River Recreation area.						
7. Special Instructions:						
<ol style="list-style-type: none"> 1. Ensure LCES, Test communications and utilize human repeaters and Air Attack if needed. 2. Notify Op's prior to any ignitions. Establish and communicate trigger points to all personnel. 3. Familiarize yourself with Management Action Points (M.A.P.'s) associated with your division, and be prepared to take appropriate actions. 4. DIVS; report GPS locations of all water withdrawal locations (pumps, engines, aviation) to OSC2. 5. Notify Planning Ops for Resource and Supply needs by 1600 for next shift. Anticipate ordering 2-3 days in advance. 						
8. Division/Group Communication Summary						
Function	Channel	RX Frequency N/W	RX Tone/NAC	TX Frequency N/W	TX Tone/NAC	Mode
TACTICAL	3	168.6000	167.9	168.6000	167.9	A
COMMAND	7	167.1000	167.9	169.7500	167.9	A
AIR TO GROUND	14	169.8250		169.8250		A
AIR TO GROUND	15	169.9875		169.9875		A
9. Prepared By (Resource Unit Leader)			Approved By (Planning Section Chief)		Date	Time
ANGELA PARKER RESL			WAYNE ROBBIE PSC2 <i>By [Signature]</i>		07/13/2015	2200

Division/Group Assignment List (ICS 204 WF)

1. Incident Name:			3.			
AGGIE CREEK			Branch:		Division/Group:	
2. Operational Period: 0800-2200			DIVISION W			
Date/Time From: 07/14/2015 0800 TUE		Date/Time To: 07/14/2015 2200 TUE				
4. Operations Personnel						
OPERATIONS CHIEF - PLANNING		WILLIAM F KING MARK BERNAL (T)		OPERATIONS CHIEF - FIELD		PAUL DELMERICO LEROY HOLGUIN (T)
DIVISION/GROUP SUPERVISOR		DAVE MARTINEZ		AIR ATTACK SUPERVISOR		M. STOUT; G.BEDDOW; G.DANIELS; A..DAMM (T)
5. Resources Assigned this Period						
Strike Team / Task Force / Resource Designator		LWD	Leader	Number Persons	Drop Off PT./Time	Pick Up PT./Time
CREW -T2-RUBICON #3			E.LEVY	20	BASE/0800	BASE/2200
E6 -BIG STATE WILDFIRE #67		07/21	LEWIS SILAS	2	BASE/0800	BASE/2200
SOF2		07/16	DONALD RANNE	1	BASE/0800	BASE/2200
EMPF		07/23	RUSSELL C LEAVITT	1	BASE/0800	BASE/2200
6. Control Operations/Work Assignments:						
Patrol, mop-up, and secure fireline to prevent further spread to Alyeska Trans-Alaska Pipeline, Elliott Highway corridor, and Wickersham area facilities.						
7. Special Instructions:						
<ol style="list-style-type: none"> 1. Ensure LCES, Test communications and utilize human repeaters and Air Attack if needed. 2. Notify Op's prior to any ignitions. Establish and communicate trigger points to all personnel. 3. Familiarize yourself with Management Action Points (M.A.P.'s) associated with your division, and be prepared to take appropriate actions. 4. DIVS; report GPS locations of all water withdrawal locations (pumps, engines, aviation) to OSC2. 5. Notify Planning Ops for Resource and Supply needs by 1600 for next shift. Anticipate ordering 2-3 days in advance. 						
8. Division/Group Communication Summary						
Function	Channel	RX Frequency N/W	RX Tone/NAC	TX Frequency N/W	TX Tone/NAC	Mode
COMMAND	7	167.1000	167.9	169.7500	167.9	A
TACTICAL	4	166.7250	167.9	166.7250	167.9	A
AIR TO GROUND	14	169.8250		169.8250		A
AIR TO GROUND	15	169.9875		169.9875		A
9. Prepared By (Resource Unit Leader)			Approved By (Planning Section Chief)		Date	Time
ANGELA PARKER, RESL			WAYNE ROBBIE PSC2 <i>By [Signature]</i>		07/13/2015	2200

Division/Group Assignment List (ICS 204 WF)

1. Incident Name:			3.			
AGGIE CREEK			Branch:		Division/Group:	
2. Operational Period: 0800-2200			STRUCTURE			
Date/Time From: 07/14/2015 0800 TUE	Date/Time To: 07/14/2015 2200 TUE					
4. Operations Personnel						
OPERATIONS CHIEF - PLANNING		WILLIAM F KING MARK BERNAL		OPERATIONS CHIEF - FIELD		PAUL DELMERICO LEROY HOLGUIN (T)
DIVISION/GROUP SUPERVISOR		M. HOSTETLER J.HANSEN (T)		AIR ATTACK SUPERVISOR		M.STOUT; G.BEDDOW; G.DANIELS; A. DAMM (T) (T)
5. Resources Assigned this Period						
Strike Team / Task Force / Resource Designator		LWD	Leader	Number Persons	Drop Off PT./Time	Pick Up PT./Time
ENGINE T6 NORTH DAKOTA #62		07/20	CARSON KERR	3	BASE/0800	BASE/2200
ENGINE - T3 - SOA-DOF -E-219		07/17	RYAN VICE	3	BASE/0800	BASE/2200
ENG/T4 - FORREST FIRE #143		07/19	BEN ENGELHARDT	2	BASE/0800	BASE/2200
TFLD IA GROUP		07/16	GEORGE BROWN	1	BASE/0800	BASE/2200
ENGINE, T6-NORTH DAKOTA# 63 IA GROUP		07/20	AARON BUCHOLZ	3	BASE/0800	BASE/2200
ENGINE, T4- NORTH DAKOTA #64 IA GROUP		07/20	JON COOPER	4	BASE/0800	BASE/2200
PICKUP W/DRIV - F-250 DNB746 B17636 - METALLOGENY		07/04	MARIA SANDERS	1	BASE/0800	BASE/2200
6. Control Operations/Work Assignments:						
Complete Structure Protection Plan Assess Structures and implement necessary prep work within fire planning area.						
7. Special Instructions:						
<ol style="list-style-type: none"> 1. Ensure LCES, Test communications and utilize human repeaters and Air Attack if needed. 2. Notify Op's prior to any ignitions. Establish and communicate trigger point to all personnel. 3. Notify Planning Ops for Resource and Supply needs by 1600 for next shift. Anticipate ordering 2-3 days in advance. 4. DIVS; report GPS locations of all water withdrawal locations (pumps, engines, aviation) to OSC2. 5. IA Group to work with Structure Group Resources. 						
8. Division/Group Communication Summary						
Function	Channel	RX Frequency N/W	RX Tone/NAC	TX Frequency N/W	TX Tone/NAC	Mode
TACTICAL	6	166.775	167.9	166.775	167.9	A
COMMAND	8	173.0375	167.9	167.3250	167.9	A
AIR TO GROUND	14	169.8250		169.8250		A
AIR TO GROUND	15	169.9875		169.9875		A
9. Prepared By (Resource Unit Leader)			Approved By (Planning Section Chief)		Date	Time
ANGELA PARKER RESL			WAYNE ROBBIE <i>By [Signature]</i>		07/12/2015	2200

AIR OPERATIONS SUMMARY

PREPARED BY: Galen Young

PREPARED DATE/TIME: 07/13/15 2100

1. INCIDENT NAME: Aggie Creek

2. OPERATIONAL PERIOD DATE: 07/14/15

START TIME: 0900 END TIME: 2300 SUNRISE:0348 SUNSET:0005

3. REMARKS (Safety Notes, Hazards, Air Operations Special Equipment, etc.)

Thunderstorms, erratic winds. Low wires, cables, power lines.
 Be aware of Alyeska Pipeline Co. flying the pipeline in rotor wing in AM. They will notify if in area.
 Divisions, contact Wickersham Helibase for all aviation needs, include coordinates of possible
 helispot/medivac locations.
 Possible smoke concerns.

Track all retardant usage and location if used. Wickersham Helibase 907-347-9613

4. MEDEVAC A/C:
 3BH
 73HJ
 See Med Plan

5. TFR: 5/2492
 Radius: 10 NM
 Altitude: 5000 MSL
 Centerpoint: N 65 15 0
 W 148 16 0
 Freq: 120.1500

6. PERSONNEL	Phone	7. FREQUENCIES	AM	FM	8. FIXED-WING	# Avail / Type/ Make-Model / FAA N# / Base(s)
AOBD: Galen Young	575-574-8720	AIR/AIR FW:	120.150		Airtankers	Available through Dispatch
ASGS: Kent Wedin	575-538-1075	AIR/AIR RW:	121.050		Leadplanes	Available through Dispatch
ATGS: Mike Stout	661-877-7889	AIR/GRD: Pri AIR/GRD: Sec		169.8250 169.9875	ATBase +	
ATGS: Gerry Beddow	928-386-3743	COMMAND:	See Com Plan		ATGS Aircraft	AA- N975AA Stout, Beddow AA- N249CP Daniel, Damm Fort Wainwright
ATGS: Gary Daniel	602-499-5297				AAB:	
ATGS(T): Antom Damm	360-561-1989	DECK:		163.100		
HEB2: Rita Clipperton	530-5590905	Medical AIR/GRD		168.626 Tone 110.9		
HEB2: Paul Borcharding	206-735-2321					

9. HELICOPTERS (Use Additional Sheets As Necessary)

FAA N#	TY	MAKE/MODEL	BASE	AVAIL	START	REMARKS	FAA N#	TY	MAKE/MODEL	BASE	AVAIL	START	REMARKS
N173BH	3	A-Star	Wainwr ight	0900	1000								
N73HJ	2	Bell 212	Wainwr ight	0900	1000								
N611CK	1	S-61	Wainwr ight	0900	1000								
N191CH	1	BV-107	Wainwr ight	0900	1000								
N214TH	1	Bell 214	Wainwr ight	0900	1000								

10. TASK/MISSION/ASSIGNMENT (Type/Function includes: Air Tactical, Retardant, Recon, Personnel Transport, Water Dropping, S&R, etc.)

TYPE/FUNCTION	NAME OF PERSONNEL OR CARGO (if applicable) OR INSTRUCTIONS FOR TACTICAL AIRCRAFT	MISSION START	FLY FROM	FLY TO
Bucket drops per request	Division Sup. To request and coordinate with Air Attack or helibase.			
Recon Flights	To be approved by OPS or AOB			
Cargo / Slings	Per Request from Div Sups, all sling loads / crew shuttles			
Ops Recon				
Div Sup Recon				
	DIPSITES			

HEALTH AND SAFETY MESSAGE

SAFETY starts with YOU

We are **ALL** accountable for **SAFE** behaviors

INCIDENT: Aggie Creek

DATE: 07/13

Operational Period: 07/14

Major Hazards and Risks:

- **Driving**
- **Foot Travel**
- **Snags**
- **Thunder Storms**
- **Mop Up**

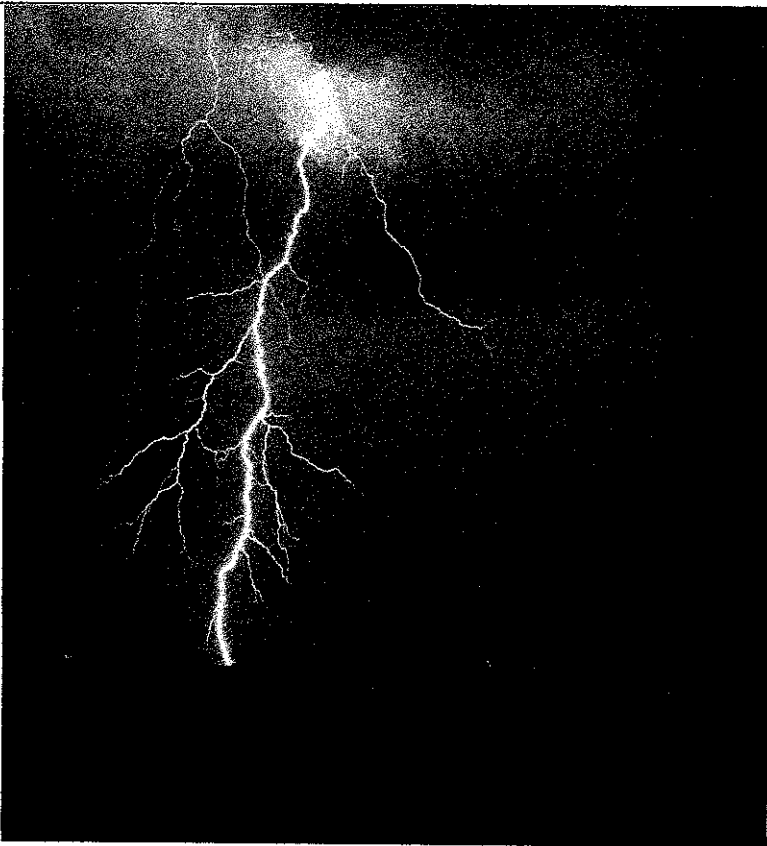
Narrative:

Weather conditions for the next couple of days are changing. Rain is in the forecast, plan for longer drive times based on conditions and adjust you're your speed to match conditions.

Foot travel will be difficult in the wet conditions. In slick conditions take your time, plan your route of travel and go slow.

Follow thunderstorm safety guidelines in the IRPG (pg 21) when storms move in to the area.

Scout areas for aerial hazards, stump holes, unstable logs or rocks. Do not begin mop up until you have determined it is safe for folks to work in any given area



SNAG S.O.P.

- Identify snags, and hazard trees (Look up, look down, look around).
- Identify kill zone and inform others – 2 ½ tree length. (Flag, describe or post lookouts to keep others out). Consider wind and weather.
- Felling of snags and hazard trees will proceed line construction and mop-up.
- Felling by **QUALIFIED FALLERS ONLY**.
- Secure, eliminate or avoid unstable material on slopes.
- Remember logs can/do roll, spin, slide & shift.
- Do not work below dozers or other firefighters.
- No class B/C felling after dark.

Remain alert to noise or movement – it could signal immediate danger. Face your danger to decide escape.


Incident Safety Officer: Allan Setzer

A handwritten signature in cursive script that reads "Allan Setzer". The signature is written in black ink and is positioned below the printed name of the Incident Safety Officer.

Incident Action Plan Safety Analysis		Operational Period: Day Shift- July 14, 2015		Incident: Aggie Creek	
Identification of Hazards and Risk Assessment		Assignment: Multi-All (Suppression-Indirect, etc.)		Mission Objective(s): Safety of Incident Responders and Public	
Pre-mitigation		Mitigation(s), Warnings and Remedies		Post-mitigation	
Hazards	Probability	Severity	Risk Level	Probability	Severity
				Risk Level	Acceptable Yes/No


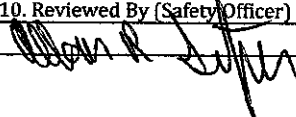
Hazards	Probability	Severity	Risk Level	Mitigation(s), Warnings and Remedies	Probability	Severity	Risk Level	Acceptable Yes/No
Driving	Likely	Critical	Serious	ALL Slowdown in fire area, observe speed limits; Lights on; Practice "Defensive Driving "; Use spotter when backing	Occasional	Significant	Minor	Yes
Foot Travel	Likely	Critical	Serious	ALL Keep spacing while hiking; scout route of travel; continually scan surrounding and "take your time";	Occasional	Significant	Minor	Yes
Dehydration Heat Related Illness	Likely	Critical	Serious	ALL Early recognition of heat of HEAT RELATED ILLNESS; Take frequent break; Drink fluids throughout shift; store extra water at drop points; eat snacks throughout the shift. Ensure LCES is in place	Occasional	Significant	Minor	Yes
Line Construction	Frequent	Critical	Critical	ALL Use Downhill Line Checklist (IRPG pg. 8) Utilize Risk Management Process (IRPG pg. 1) Do not rely on aircraft as mode of transportation.	Occasional	Critical	Moderate	Yes
Wildlife (Bears, moose, etc)	Likely	Critical	Serious	ALL No food in sleeping areas Do not leave food scraps on the fireline or spike camp; back haul away all food garbage daily Avoid surprising bears at close distance, make plenty of noise, look for bear sign Never run from a bear, stand upright and tall, don't bend over. Detour around areas where you see fresh animal carcasses or fresh bear scat Be alert for moose crossing roadways while driving. Never approach moose on the fireline; safely leave area	Rarely	Critical	Minor	Yes
Chainsaw Operations	Likely	Catastrophic	Critical	ALL "Hazard Tree Guidelines" (IRPG pg. 22-23) Look up, down and around for hazard tree indicators. Only fell and buck trees within your expertise and training. Follow "Procedural Felling Operations" (IRPG pg. 79). Do not fell trees in high wind events. Follow Aviation Watchout Situations (IRPG pg. 43)	Occasional	Catastrophic	Serious	Yes
Air Operations	Occasional	Catastrophic	Serious	ALL Don't plan on air resources for transport or re-supply. Directing Retardant and Bucket Drops (IRPG pg. 57) Be thoroughly briefed on aerial ignition plans and ops.	Rarely	Catastrophic	Moderate	Yes

INCIDENT RADIO COMMUNICATIONS PLAN (ICS 205)

1. Incident Name: AGGIE CREEK		2. Date/Time Prepared: Date: 07/11/2015 Time: 1058		3. Operational Period: 0800-2200		Date/Time From: 07/14/2015 0800		Date/Time To: 07/14/2015 2200		
4. Basic Radio Channel Use:										
Zone Group	Ch #	Function	Channel Name/Trunked Radio System Talkgroup	Assignment	RX Freq	RX Tone/NAC	TX Freq	TX Tone/NAC	Mode (A, D, or M)	Remarks
	1	TACTICAL	TAC 1	DIVISION A	168.0500	167.9	168.0500	167.9	A	
	2	TACTICAL	TAC 2	DIVISION T	168.2000	167.9	168.2000	167.9	A	
	3	TACTICAL	TAC 3	DIVISION V	168.6000	167.9	168.6000	167.9	A	
	4	TACTICAL	TAC 4	DIVISION W	166.7250	167.9	166.7250	167.9	A	
	5	TACTICAL	TAC 5	DIV U	168.2500	167.9	168.2500	167.9	A	
	6	TACTICAL	TAC 6	STRUCTURE/IA, G	166.775	167.9	166.775	167.9	A	
	7	COMMAND	CMD 6	COMMAND 6	167.1000	167.9	169.7500	167.9	A	HAYSTACK MTN.
	8	COMMAND	CMD 7	COMMAND 7	173.0375	167.9	167.3250	167.9	A	WICKERSHAM DOME
	9	COMMAND	CMD 8	COMMAND 8	170.0500	167.9	164.5750	167.9	A	ICP
	11	COMMAND	DOF A	COMM W/ LOCAL	151.2650		159.2700	141.3	A	ESTER DOME
	12	COMMAND	DOF B	COMM W LOCAL	151.2950		159.3000	141.3	A	NANANA; IA ONLY
	13	TACTICAL	IA TAC 1	COMM W/LOCAL	159.3750		159.3750		A	IA ONLY
	14	AIR TO GROUND	A/G 6	A2G TACTICAL	169.8250		169.8250		A	PRIMARY
	15	AIR TO GROUND	A/G 8	A2G AIR ATTACK	169.9875		169.9875		A	
	16	AIR GUARD	AIR GUAR	AIR GUARD	168.6250	110.9	168.6250	110.9	A	EMERGENCY USE ONLY
5. Special Instructions:										
6. Prepared By (Communications Unit Leader)										
Name: RICK LAZO				Signature: 						
ICS 205				Date/Time: 07/14/2015 1058						

MEDICAL PLAN 206	FIRE NAME Aggie Creek	DATE PREPARED 07/13/15	WORK PERIOD 07/14/15		
AID STATIONS/EMT PLACEMENT					
NAME	LOCATION	PHONE	PARAMEDIC YES NO		
Mike Lund EMIF/ Robert Bacon EMPF	ICP	575-770-6694 / 907-371-5736	X		
Mike Poveda EMTF	Div. G	720-341-1897	X		
Matt Horton EMPF	Div. T	919-622-1295	X		
Melissa Brewer EMPF	Div. U	503-428-8627	X		
Russ Leavitt EMPF	Div. W	435-772-4107	X		
Aaron Seaman EMTF	Div. V	425-923-7440	X		
Brad Nelson EMTF	Div. A	816-244-1810	X		
Laura Belino EMT	Wickersham Dome Base Camp	509-860-1189	X		
M.ZastauskyEMT, K.WatsonEMP	Delta Ambo Div V:DP 37	907-750-2521	X		
AMBULANCE SERVICES					
NAME	LOCATION	PHONE	PARAMEDIC YES NO		
Delta Ambulance	Div. W at DP 37	907-750-2521	X		
Steese Fire/EMS	800 William C. Leary LN.;Fairbanks, AK	907-450-6504	X		
AIR AMBULANCE					
NAME	PHONE	TYPE OF AIRCRAFT	CAPABILITY		
INCIDENT AIRCRAFT	BY RADIO HELITAK	A-STAR 73BH 212 73HJ	1PT SITTING 1 PT Backboard		
GUARDIAN FLIGHT ALASKA (FIXED)	888-997-3822	KINGAIR 200/LEARJET 35	1 ALS/2 BLS		
STATE TROOPERS/ ARMY MAST	907-451-5100	BLACK HAWK	SHORT/LONG HAUL, ALS		
HOSPITALS					
HOSPITAL	LOCATION	TRAVEL TIME AIR/GROUND	PHONE	HELIPAD YES NO	BURN CENTER YES NO
FAIRBANKS MEMORIAL LEVEL 3 TRAUMA	1650 COWLES ST FAIRBANKS, AK 99701 N 64° 49.94, W 147° 44.52	30 MIN 1 HR	907-458-5555	X	X
1 st CARE CENTER CLINIC/URGENT CARE	1101 NOBLE ST FAIRBANKS, AK 99701 8 AM TO 8 PM, 7 DAYS	N/A 1 HR	907-459-3500	X	X
PROVIDENCE ALASKA LEVEL 3 TRAUMA	3200 PROVIDENCE DR. ANCHORAGE, AK 99508 N 61° 50.09, W 149° 49.08	2 HRS 6 HRS	907-212-3111	X	X
HARBORVIEW MEDICAL CENTER LEVEL 1 TRAUMA	325 9 TH AVE SEATTLE, WA 98104 N 47° 36.14, W 122° 19.21	3 HRS FIX	206-284-2876	X	X
MEDL: Mike Lund and Robert Bacon <i>Robert Bacon</i>		Safety: <i>Alan H. Johnson</i>			

Medical Plan (ICS 206 WF)

1. Incident/Project Name AGGIE CREEK		2. Operational Period 0800-2200 Date/Time From: 07/14/2015 0800 Tue Date/Time To: 07/14/2015 2200 Tue	
6. Area Location Capability			
Branch Division/Group			
DIV. G	EMS Responders & Capability:		Mike Poveda EMTF
	Equipment Available On Scene:		Backboard, Trauma, BLS, O2
	Medical Emergency Channel:		COMMAND 7
	ETA For Ambulance to Hospital:		
	Air:		30 minutes
	Ground:		2 hours
	Approved Helispot:		TBD
	Lat:		TBD
Long:		TBD	
DIV. V	EMS Responders & Capability:		Aaron Seaman EMTF
	Equipment Available On Scene:		Sked, Trauma, BLS, O2
	Medical Emergency Channel:		COMMAND 7
	ETA For Ambulance to Hospital:		
	Air:		30 minutes
	Ground:		1 hour
	Approved Helispot:		H-160
	Lat:		N65° 14.652
Long:		W148° 05.657	
DIV. U	EMS Responders & Capability:		Melissa Brewer EMPF
	Equipment Available On Scene:		ALS, Narcs, O2
	Medical Emergency Channel:		COMMAND 7
	ETA For Ambulance to Hospital:		
	Air:		30 minutes
	Ground:		1 hour
	Approved Helispot:		H-120
	Lat:		N65° 15.766
Long:		W148° 09.597	
DIV. W	EMS Responders & Capability:		Russ Leavitt EMPF
	Equipment Available On Scene:		Trauma, ALS, Narcs
	Medical Emergency Channel:		COMMAND 7
	ETA For Ambulance to Hospital:		
	Air:		30 minutes
	Ground:		1 hour
	Approved Helispot:		H-15
	Lat:		N65° 13.281
Long:		W148° 09.886	
DIV. T	EMS Responders & Capability:		Matt Horton EMPF
	Equipment Available On Scene:		Backboard, ALS, Narcs, Trauma
	Medical Emergency Channel:		COMMAND 7
	ETA For Ambulance to Hospital:		
	Air:		30 minutes
	Ground:		1.5 hours
	Approved Helispot:		TBD
	Lat:		TBD
Long:		TBD	
Wickersham Dome Base Camp/DP-20	EMS Responders & Capability:		Laura Belino
	Equipment Available On Scene:		Medical Supplies, BLS, AED, Traction Splint, KED
	Medical Emergency Channel:		COMMAND 7
	ETA For Ambulance to Hospital:		
	Air:		30 minutes
	Ground:		1 hour
	Approved Helispot:		Helibase
	Lat:		N65° 10.316
Long:		W148° 05.784	
8. Prepared By (MEDL) 	9. Date/Time 07/13/15 2100	10. Reviewed By (Safety Officer) 	11. Date/Time 07/13/15 2100

Medical Incident Report

Use items one through nine to communicate situation to communications/dispatch.

1. CONTACT COMMUNICATIONS/DISPATCH

Ex: "Communications, Div. Alpha. Stand-by for Priority Medical Incident Report." (If life threatening request designated frequency be cleared for emergency traffic.)

2. INCIDENT STATUS: Provide incident summary and command structure

Nature of Injury/Illness		<i>Describe the injury (Ex: Broken leg with bleeding)</i>
Incident Name:		<i>Geographic Name + "Medical" (Ex: Trout Meadow Medical)</i>
Incident Commander:		<i>Name of IC</i>
Patient Care:		<i>Name of Care Provider (Ex: EMT Smith)</i>

3. INITIAL PATIENT ASSESSMENT: Complete this section for each patient. This is only a brief, initial assessment. Provide additional patient info after completing this 9 Line Report. See page 100 for detailed Patient Assessment.

Number of Patients:	Male/Female	Age:	Weight:
Conscious?	<input type="checkbox"/> YES	<input type="checkbox"/> NO = MEDEVAC!	
Breathing?	<input type="checkbox"/> YES	<input type="checkbox"/> NO = MEDEVAC!	
Mechanism of Injury: <i>What caused the injury?</i>			
Lat./Long. (Datum WGS84) Ex: N 40° 42.45'x W 123° 03.24'			

4. SEVERITY OF EMERGENCY, TRANSPORT PRIORITY

SEVERITY	TRANSPORT PRIORITY
<input type="checkbox"/> URGENT-RED Life threatening injury or illness. Ex: Unconscious, difficulty breathing, bleeding severely, 2°-3° burns more than 4 palm sizes, heat stroke, disoriented.	Ambulance or MEDEVAC helicopter. Evacuation need is IMMEDIATE.
<input type="checkbox"/> PRIORITY-YELLOW Serious injury or illness. Ex: Significant trauma, not able to walk, 2°-3° burns not more than 1-2 palm sizes	Ambulance or consider air transport if at remote location. Evacuation may be DELAYED.
<input type="checkbox"/> ROUTINE-GREEN Not a life threatening injury or illness. Ex: Sprains, strains, minor heat-related illness	Non-Emergency. Evacuation considered Routine of Convenience.

5. TRANSPORT PLAN:

Air Transport: (Agency Aircraft Preferred)			
<input type="checkbox"/> Helispot	<input type="checkbox"/> Short-haul/Hoist	<input type="checkbox"/> Life Flight	<input type="checkbox"/> Other
Ground Transport:			
<input type="checkbox"/> Self-Extract	<input type="checkbox"/> Carry-Out	<input type="checkbox"/> Ambulance	<input type="checkbox"/> Other

6. ADDITIONAL RESOURCE/EQUIPMENT NEEDS:

<input type="checkbox"/> Paramedic/EMT(s)	<input type="checkbox"/> Crew(s)	<input type="checkbox"/> SKED/Backboard/C-Collar
<input type="checkbox"/> Burn Sheet(s)	<input type="checkbox"/> Oxygen	<input type="checkbox"/> Trauma Bag
<input type="checkbox"/> Medication(s)	<input type="checkbox"/> IV/Fluid(s)	<input type="checkbox"/> Cardiac Monitor/AED
<input type="checkbox"/> Other (e.g., splints, rope rescue, wheeled litter)		

7. COMMUNICATIONS:

Function	Channel Name/Number	Receive (Rx)	Tone/NAC*	Transmit (Tx)	Tone/NAC*
<i>Ex: Command</i>	<i>Forest Rpt, Ch. 2</i>	<i>168.3250</i>	<i>110.9</i>	<i>171.4325</i>	<i>110.9</i>
COMMAND					
AIR-TO-GRND					
TACTICAL					

Ensure that Air Attack is contacted, if Air Medivac is used

8. EVACUATION LOCATION:

Lat./Long. (Datum WGS84) <i>EX: N 40° 42.45'x W 123° 03.24'</i>	
Patient's ETA to Evacuation Location:	
Helispot/Extraction Size and Hazards	

9. CONTINGENCY:

<p>Considerations: If primary options fail, what actions can be implemented in conjunction with primary evacuation method? Be thinking ahead...</p>

REMEMBER:

- **Confirm ETAs of resources ordered.**
- **Act according to your level of training.**
- **Be Alert. Keep Calm. Think Clearly. Act Decisively.**

**SOUTHWEST
INCIDENT MANAGEMENT
TEAM #5
RICH NIETO – INCIDENT COMMANDER**

July 12, 2015

To: All Incident Personnel for the Aggie Creek Fire (AK-FAS-511515)

From: Richard Nieto, Incident Commander

Subject: Ethical Behavior and Conduct

The Southwest Area Incident Management Team 5 is committed to the highest principles of ethical behavior and conduct. This team fully endorses the laws and policies regarding discrimination, harassment, hazing, and other inappropriate behavior, and will not tolerate misconduct in any form. We expect an attitude of mutual respect for all incident personnel and the public we serve.

As Incident Commander, I expect all personnel assigned to this incident to carry themselves with the highest level of conduct and integrity. As ambassadors, I encourage each of you to represent this Incident Management Team, as well as your agency in a professional and respectful manner.

I am committed to the policy that everyone is entitled to a safe work environment from the moment of dispatch until your return to the home unit. I expect and demand nothing less than work practices that reflect a “Safety First” attitude.

Your actions reflect upon all of us.

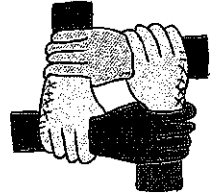
Sincerely,

Richard Nieto

**Richard Nieto
Incident Commander
Southwest Interagency Management Team #5**



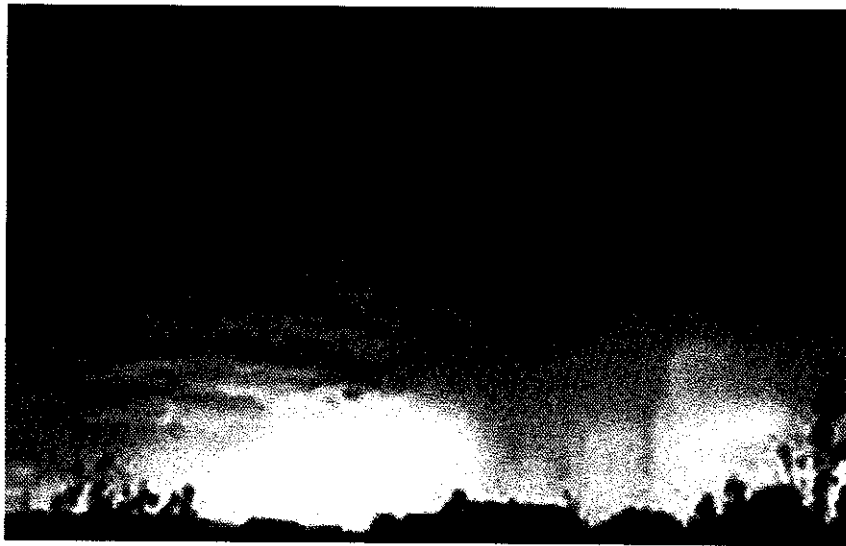
Human Resources Message
Aggie Creek Fire, Fairbanks, AK
July 14, 2015



**You can't choose what life throws at you, but you can
choose how you respond.**

Stay on task, and remember why we're here!

Gina Melchor, HR Specialist



~ Training message ~

IMPORTANT: Trainees – Be sure to talk to the Training Specialist about the process required to document your assignment. Stop by or call 907-451-1217.

Jim Maes, Training Specialist
Gina Melchor, Training Specialist Trainee

Aggie Creek Fire

Telephone List

7/14/2015

<u>Demob:</u>	<u>907-451-1271</u>
<u>Demob Fax:</u>	<u>907-451-1253</u>
<u>Plans:</u>	<u>907-451-1238</u>
<u>Finance:</u>	<u>907-451-1278</u>
<u>IC:</u>	<u>907-451-1247</u>
<u>Ordering Fax:</u>	<u>907-451-1231</u>
<u>INFO:</u>	<u>907-451-1206</u>
<u>COMP/Claims</u>	<u>907-451-1284</u>
<u>Supply Track Phone:</u>	<u>907-750-8236</u>
<u>Supply (Valerie Williams):</u>	<u>575-751-4716</u>
<u>Base Camp Food (Hess):</u>	<u>619-495-9276</u>
<u>Base Camp Supply (John):</u>	<u>907-750-7816</u>
<u>Base Camp Mgr. (Harley):</u>	<u>907-347-3580</u>
<u>Security SECM (T) (Ramona):</u>	<u>575-361-4402</u>
<u>Security SECM (George Hedges):</u>	<u>205-269-0728</u>
<u>LOGS:</u>	<u>907-451-1279</u>
<u>IMET (Christian):</u>	<u>907-250-5541</u>
<u>COMMO Cell:</u>	<u>907-687-5918</u>
<u>COMMO Landline:</u>	<u>907-451-1203</u>

Aggie Creek Fire

Cell Phone List

7/14/2015

IC: Rich Nieto 907-687-3265

IC: John Pearson 907-388-6448

Plans: Wayne Robbie 907-378-4176

Liaison: Scott Cooke 907-388-2678

SOPL: Bob Lineback 907-371-0179

Air OPS: Galen Young 907-371-7241

Air Support: Kent Wedin 907-378-8211

Supply: Valerie Williams 907-388-0961

Communications: Rick Lazo 907-371-5626

Medical: Robert Bacon 907-371-5736

• inciweb.nwcg.gov

• Aggie Creek Fire

• aggiecreekfire2015@gmail.com

• 907-451-1206

TENTATIVE RELEASE
Aggie Creek US-AK-FAS-500515

TUESDAY 7/14/2015

OVERHEAD

O-25	900 (EMPF)	Sandler, Ronald
O-71	1600 (HECM)	Bumps, Stephen
O-72	1800 (HECM)	Anderson, Karin L
O-1.45	1900 (HEB1)	Borcherding, Paul
O-109	1915 (COMT)	Harness, Scott

WEDNESDAY 7/15/2015

CREWS

C-31	800 (HC2)	Oregon 13047
C-33	830 (HC2)	Oregon 13046
C-58	900 (HC2)	Patrick C-58

EQUIPMENT

E-67	930 (ENG6)	Big State Wildfire GSB187
------	------------	---------------------------

OVERHEAD

O-58	900 SEC1	Nicely, David J
O-72	930 HECM	Anderson, Karin L
O-24	1000 EMTF	Seaman, Aaron
O-79	1000 EMPF	Brewer, Melissa
O-85	1015 SOF2	Kemp, Gary
O-109	1030 COMT	Harness, Scott

Thursday 7/16/2015

OVERHEAD

O-75	1800 (HMGB)	Seloske, Garry Charles
O-77	1800 (RCDM)	Withers, Troy

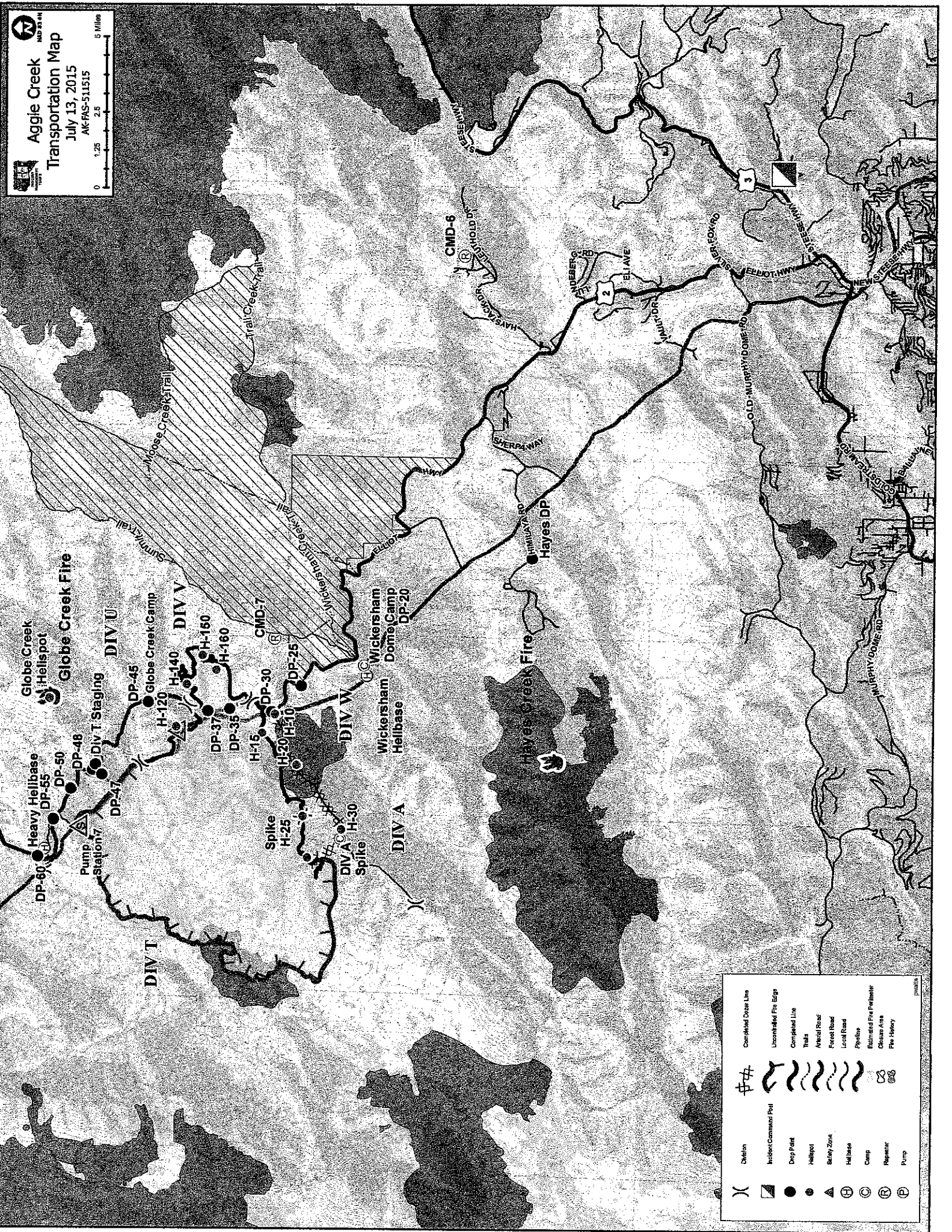
Friday 7/17/2015

CREWS

C-29	800 (CC)	SLC Aggie Creek Camp
C-23	830 (CC)	Aggie Creek Camp Crew

OVERHEAD

O-95	800 (TFLD)	Brown, George Victor
O-100	815 (TFLD)	Kidd, Beau
O-4	830 (RADO)	Hunter, Michael
O-37	1800 (COMP)	Crouch, Dawn Michelle
O-91.17	1800 (GISS)	Porter, Marilyn Porter



	Division		Completed Ditch Line
	Incident Command Post		Uncontrolled Fire Edge
	Dog Pad		Completed Line
	Helipad		Trail
	Survey Zone		Aerial Road
	Helibase		Firebreak Road
	Camp		Local Road
	Repairer		Pipeline
	Pump		Estimated Fire Perimeter
			Chase Area
			Fire History

