



Southwest Area IMT 5

Richard Nieto IC

Thursday 7/16/15

Dayshift 0800 – 2200

Aggie Creek

AK-FAS-511515

Fire Code JTZ2

State Code 73-511515

FS Code: PNJTZ2 1502

Hayes Creek

AK-FAS-511557

Fire Code JT3U

State Code 73-511557

FS Code: PNJT3U 1502

AGGIE CREEK FIRE QR CODES

DROPBOX (APPLE)




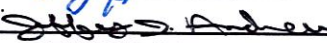
<http://tinyurl.com/AggieCreek>

GOOGLE DRIVE (ANDROID)




<http://tinyurl.com/Aggie-Creek-Fire-Maps>

INCIDENT OBJECTIVES (ICS 202)

1. Incident Name:		2. Operational Period: 0800-2200	
AGGIE CREEK		Date/Time From: 07/16/2015 0800 THU	Date/Time To: 07/16/2015 2200 THU
3. Objective(s):			
Value at Risk			
<ul style="list-style-type: none"> • Tatalina Subdivision. • Alyeska Trans-Alaska Pipeline and associated infrastructure (valves, pump stations, snow pad). • Elliott Highway corridor and structures. • Native allotments and improvements. • Communities of Hayes, Himalaya, and Haystack. • BLM cabins and communication sites. 			
Incident Objectives			
<ul style="list-style-type: none"> • Fire personnel and public safety is fully achieved through the application and implementation of sound risk management analysis for incident activities. • Values at risk are protected from adverse fire and incident management actions. • Traffic along the Elliott Highway is minimally disrupted. • Native allotments are protected with priority on structure protection. • Information and intelligence is gathered and collected on infrastructure and sensitive resources for ongoing fire management planning and long-term analysis. 			
Incident Requirements:			
<ul style="list-style-type: none"> • Utilize appropriate suppression tactics to minimize negative impacts to natural, wildlife, and cultural resources. • Incident personnel support area initial attack as requested by the host agency. • Provide fire and smoke related information to the media and residents. • Foster and maintain relationships between partners, agencies, and communities currently and potentially affected by the fire. • Cost containment is factored into risk management decision making. 			
4. Operational Period Command Emphasis:			
General Situational Awareness:			
See Attached Safety Plan			
5. Site Safety Plan Required? Yes <input type="checkbox"/> No <input checked="" type="checkbox"/>			
Approved Site Safety Plan(s) Located at:			
6. Incident Action Plan (the items checked below are included in this Incident Action Plan):			
<input checked="" type="checkbox"/> ICS 202	<input type="checkbox"/> ICS 207	Other Attachments:	
<input checked="" type="checkbox"/> ICS 203	<input type="checkbox"/> ICS 208	<input checked="" type="checkbox"/> MEDICAL INCIDENT	
<input checked="" type="checkbox"/> ICS 204	<input checked="" type="checkbox"/> ICS 220	<input checked="" type="checkbox"/> HUMAN RESOURCE	
<input checked="" type="checkbox"/> ICS 205	<input checked="" type="checkbox"/> Map/Chart	<input checked="" type="checkbox"/> PHONE LIST	
<input type="checkbox"/> ICS 205A	<input checked="" type="checkbox"/> Weather Forecast/Tides/Currents	<input checked="" type="checkbox"/> UNIT LOG	
<input checked="" type="checkbox"/> ICS 206			
7. Prepared by: WAYNE ROBBIE	Position/Title: PSC2	Signature:  PSC2(G)	
8. Approved by Incident Commander:		Signature: 	
Name: RICHARD NIETO, ICT2		Date/Time: 07/15/2015 2200	
ICS 202	IAP Page	FOR RICH NIETO	

ORGANIZATION ASSIGNMENT LIST (ICS 203)

1. Incident Name:		2. Operational Period: 0800-2200	
AGGIE CREEK		Date/Time From: 07/16/2015 0800 THU	Date/Time To: 07/16/2015 2200 THU
3. Incident Commander(s) and Command Staff:		6. Logistics Section:	
IC/UC	RICHARD NIETO ; JEFF ANDREWS (T) JOHN PIERSON, DEPUTY	CHIEF	DOUGLAS WILLIAMS MARK CATRON, MARGIE GUZMAN (T)
SAFETY OFFICER	ALLAN R SETZER JOSHUA TIBBETTS (T)	MEDICAL UNIT	MIKE LUND ROBERT BACON
INFORMATION OFFICER	IRIS ESTES; HOLLY KRAKE (T)	SUPPLY UNIT	VALERIE WILLIAMS
LIAISON OFFICER	SCOTT COOKE AARON BALDRIDGE	FACILITIES UNIT	RUSSELL FOX
SECURITY MANAGER	GEORGE HEDGES RAMONA WHITE (T)	GROUND SUPPORT UNIT	TONY ARMIJO
4. Agency/Organization Representative(s):		COMMUNICATIONS UNIT	RICK LAZO
Agency/Organization	Name	FOOD UNIT	
STATE OF ALASKA DCNR	PAUL MAKI	RECEIVING AND DISTRIBUTION	T. WITHERS; L.DYER (T)
ALASKA DEPT OF FISH AND GAME	BILL MORRIS	ORDERING UNIT MANAGER	P.HERSEY; J.COLE (T);S.FLETCHER (T)
FAIRBANKS NORTH STAR BOROUGH EMS DIRECTOR	DAVID GIBBS	7. Operations Section:	
ALASKA STATE TROOPER	LT LONNY PISCOYA SGT MIKE ROBERTS	OPS SECTION CHIEF - PLANNING	BILL KING MARK BERNAL (T)
BLM	LENORE HEPPLER	OPS SECTION CHIEF	PAUL DELMERICO, JAMES VILLARD LEROY HOLGUIN (T)
IARR	R-5 FREDDIE ESPINOZA; ANGELA SANCHEZ R-3 ALAN SINCLAIR; FRANK BEDONIE	DIVISION A	N.NOZIE; C.JESSOP (T)
5. Planning Section:		DIVISION G	BEAU KIDD
CHIEF	WAYNE A ROBBIE; LANN MOORE, DEPUTY; JEFF HICKERSON (T)	DIVISION T	TERRANCE GALLEGOS
DEMOBILIZATION UNIT	PATRICIA ANN BURNS GERALD SANCHEZ (T)	DIVISION U	TIM FONDRIEST TRENTON GIRARD (T)
RESOURCES UNIT	ANGELA PARKER; KEVIN CONN	DIVISION V	JASEN TEAL
SITUATION UNIT	ELIZABETH YOUNGER (T)	DIVISION W	DAVID MARTINEZ
GIS SPECIALIST	MARILYN RUTH PORTER PHIL WATTS	STRUCTURE GROUP	MIKE HOSTETLER JEREMY HANSEN (T)
HRSP; TRAINING	G.MELCHOR	7b. Air Operations Branch:	
DOCUMENTATION UNIT	ARTHUR GRIMES	AIR OPS BRANCH DIRECTOR	GALEN YOUNG
FIRE BEHAVIOR ANALYST	GALEN ROESLER	AIR SUPPORT SUPERVISOR	KENT WEDIN
STRATEGIC OP PLANNER	BOB LINEBACK; BILL MILLER	AIR ATTACK SUPERVISOR	M.STOUT; G.BEDDOW; G.DANIELS; A.DAMM (T)
INCIDENT METEOROLOGIST	CHRISTIAN CASSELL	8. Finance/Administration Section:	
COMPUTER SPECIALIST	BRUCE JULAGAY CHRIS DAWSON	CHIEF	BILLY ZAMORA WANDA GALLEGOS (T)
RESOURCE ADVISOR	NOAH LLOYD	TIME UNIT	S. IMLER-JACQUEZ; P.ATTALA; G.MCCABE
STATUS CHECK IN	WILLIAM KONEN	COST UNIT	CAROL CHAVEZ
9. Prepared By:		EQUIPMENT TIME	B.PYSHER; J.HICKMAN (T)
Name: ANGELA PARKER	Position/Title: RESL	Signature: 	
ICS 203	IAP Page	Date/Time: 07/15/2015 2030	



INCIDENT Weather Forecast



FORECAST NO: 20

NAME OF FIRE: Aggie Creek

PREDICTION FOR: DAY SHIFT

UNIT: Alaska DNR

SHIFT DATE: Thursday, July 16th, 2015

SIGNED:

TIME AND DATE

Christian Cassell
Incident Meteorologist

FORECAST ISSUED: 8:00 PM Wednesday, July 15th, 2015

WEATHER DISCUSSION:

Strong south to southeast downslope drying off of the Alaska Range will bring sunny and much drier conditions today to the fire area. Strong winds blowing through the Alaska Range may mix down toward the surface during the late afternoon through evening hours may result in marginally extreme fire weather conditions.

WEATHER FORECAST FOR TODAY (THURSDAY):

WEATHER: Mostly sunny. Winds potentially becoming gusty in the afternoon.

TEMPERATURES: Highs 74 to 77.

MINIMUM RELATIVE HUMIDITY: 27 to 35%

20 FT WINDS:

RIDGETOP – South to southeast 5 to 10 mph with gusts to 15 mph becoming 8 to 12 mph with gusts 20 to 25 mph late afternoon through mid-evening.

SLOPE/VALLEY – South to southeast 4 to 7 mph with gusts to 12 mph becoming 7 to 12 mph with gusts 20 to 25 mph late afternoon through mid-evening.

STABILITY/INVERSION: Shallow inversion lifting by mid-morning.

LAL: 1

CHANCE OF WETTING RAIN: 0%

TONIGHT (THURSDAY NIGHT):

Increasing mid and high clouds. Lows 54-58. Maximum RHs 60-70%. Southeast wind 4 to 7 mph with gusts to 15 mph.

OUTLOOK FOR FRIDAY:

Becoming mostly cloudy with a chance of showers in the afternoon. Highs 65 to 70. Minimum RHs 40 to 45%. Southeast winds 5 to 9 mph with gusts to 15 mph becoming southwest in the afternoon.

EXTENDED FORECAST (SATURDAY-MONDAY):

Saturday: Showers likely. Areas of smoke. Highs 57 to 64. Lows 45 to 50. Minimum RH 50 to 60%. Southwest wind 10 to 17 mph.

Sunday: Showers likely. Areas of smoke. Highs 60 to 65. Lows 45 to 50. Minimum RH 50 to 60%. Southwest wind 10 to 17 mph.

Monday: Partly sunny. A chance of showers in the morning. Areas of smoke. Highs 65 to 72. Lows 45 to 50. Minimum RH 42 to 50%. West to southwest winds 7 to 13 mph.

EXTRA INFORMATION:

Today's Maximum/Minimum Conditions (Wednesday, July 15th, 2015):

Fairbanks (433 feet): Temp – 72F. Relative Humidity – 37%. Wind – VAR 6 mph.

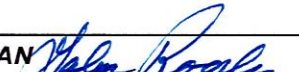
Alaska Portable 6 (2290 feet): Temp – 64F. Relative Humidity – 47%. Wind – SSW 5 G9 mph.

Caribou Peak (2517 ft): Temp – 64F. Relative Humidity – 46%. Wind – SW 4 G12 mph.

Chatanika (1626 ft): Temp – 70F. Relative Humidity – 42%. Wind – SE 3 G12 mph.

Wickersham Dome (2229 feet): Temp – 66F. Relative Humidity – 41% Wind – SE 4 G11 mph.

FIRE BEHAVIOR FORECAST

FORECAST NUMBER: 22	TYPE OF FIRE: Wildland Fire
FIRE NAME: Aggie Creek	OPERATIONAL PERIOD: Day Shift, July 16, 2015
DATE ISSUED: July 15, 2015	TIME ISSUED: 2100
UNIT: Alaska DNR	SIGNED: /s/ Galen Roesler FBAN 

INPUTS

WEATHER SUMMARY:

Sunny and warm with much lower relative humidity. Winds becoming gusty in the afternoon.

See attached Fire Weather Forecast.

OUTPUTS

FIRE BEHAVIOR

GENERAL:

Rain, clouds, and high relative humidity combined to minimize fire behavior yesterday. Fire behavior across the fire area was mostly smoldering with isolated areas of creeping surface fire.

Despite the wetting rain, there remains a lot of heat in the duff layers due to the very dry fuels.

Weather today is predicted much warmer, drier, and windier than the past two days. As a result the fuels will dry rapidly through the course of the day. Early in the shift most fire behavior will consist of smoldering in the duff. Later in the day as the temperature increases, relative humidity decreases, and winds increase we could see areas of low to moderate intensity surface fire, especially where available fuels are most exposed to wind.

Remember that several areas within the fire have considerable reburn potential.

Isolated torching may be possible where heat remains in black spruce.

SPECIFIC:

Divisions A, G, & T: These divisions have more residual heat than the other divisions. Expect areas of smoldering in the duff layer across these divisions. Drying of surface fuels later in the shift could allow for areas of low to moderate intensity surface fire. Today's wind direction could increase fire behavior in tussock area Division G along the Tatalina River. There is also a possibility for backing fire from heat along the edge in Division A.

Divisions U, V, & W: There has been a lot of mop-up in these divisions, so less heat remains along the perimeter. Expect scattered areas of smoldering throughout the area. With drying later in the day, there could be some areas of isolated creeping surface fire, especially in black spruce stands.

Hayes Creek Fire: No activity or spread anticipated.

Initial Attack: Expect low intensity burning and low to moderate spread on new fires.

Fuel Model	Rate of Spread
Black Spruce	13 feet/min (torching)
Grass/Tussock Tundra	8 feet/min
Mixedwoods, Green	4 feet/min

Following are the forecasted Canadian Forest Fire Danger Rating System for Alaska Portable 6 RAWs for today:

- Fine Fuel Moisture Code (FFMC) 84.9 Moderate
- Initial Spread Index (ISI) 4 Moderate
- Buildup Index (BUI) 97.5 Very High
- Fire Weather Index (FWI) 16.2 Moderate

AIR OPERATIONS:

No problems identified for air operations.

SAFETY:

Standard Firefighting Order #2 – know what you fire is doing at all times. Fuels in the fire area are very dry and will quickly lose the moisture from Tuesday's rain. Don't get caught off guard. LCES

Division/Group Assignment List (ICS 204 WF)

1. Incident Name:			3.			
AGGIE CREEK			Branch:		Division/Group:	
2. Operational Period: 0800-2200					DIVISION A	
Date/Time From: 07/16/2015 0800 THU			Date/Time To: 07/16/2015 2200 THU			
4. Operations Personnel						
OPERATIONS CHIEF - PLANNING		WILLIAM F KING MARK BERNAL (T)		OPERATIONS CHIEF - FIELD		
				PAUL DELMERICO LEROY HOLGUIN (T)		
DIVISION/GROUP SUPERVISOR		NATHANIEL NOZIE CHRIS JESSOP (T)		AIR ATTACK SUPERVISOR		
				M. STOUT; G. BEDDOW; G. DANIELS A. DAMM (T)		
5. Resources Assigned this Period						
Strike Team / Task Force / Resource Designator	LWD	Leader	Number Persons	Drop Off PT./Time	Pick Up PT./Time	
O-134 MODULE - WILDLAND FIRE - PLAX - PLATTE CANYON WFM 5	07/24	DEVIN MACDONALD	12	BASE/0800	BASE/2200	
O-128 SOF2	07/23	JONATHAN LEE	1	BASE/0800	BASE/2200	
HEQB (RUBICON CREW)	07/23	JOSH TAYLOR	1	BASE/0800	BASE/2200	
E-222 DOZER - D8 CATERPILLER- MIDDLE FORK	08/04	JOSHUA RAY	2	BASE/0800	BASE/2200	
E-220 DOZER/T1 - TEREX - BOYTILLA		EARL BOYTILLA	1	BASE/0800	BASE/2200	
E-119 FORESTRY MULCHER/MASTICATOR - AK REMOTE BUILDERS	07/18	TONY BUERGE	1	BASE/0800	BASE/2200	
E-149 TRACKED UTILITY VEHICLE- GILLMORE	07/19	MCFADDEN BART	1	BASE/0800	BASE/2200	
O-105 EMTF	07/16	BRADLEY NELSON	1	BASE/0800	BASE/2200	
6. Control Operations/Work Assignments:						
Continue direct dozer line on the flats towards the Tatalina river. Continue dozer line along the ridgetop to the southwest of H30 to protect subdivision to the south.						
7. Special Instructions:						
<ol style="list-style-type: none"> 1. Ensure LCES, Test communications and utilize human repeaters and Air Attack if needed. 2. Notify Op's prior to any ignitions. 3. Establish and communicate trigger points to all personnel. 4. Familiarize yourself with Management Action Points (M.A.P.'s) associated with your division, and be prepared to take appropriate actions. 5. DIVS; report GPS locations of all surface water withdrawal locations (pumps, engines, aviation) to OSC2 (report in NAD 83 decimal minutes format). 6. Notify Planning Ops for Resource and Supply needs by 1600 for next shift. Anticipate ordering 2-3 days in advance. 7. Coordinate with Air Attack for any aviation needs. 						
8. Division/Group Communication Summary						
Function	Channel	RX Frequency N/W	RX Tone/NAC	TX Frequency N/W	TX Tone/NAC	Mode
COMMAND	7	167.1000	167.9	169.7500	167.9	A
TACTICAL	1	168.0500	167.9	168.0500	167.9	A
AIR TO GROUND	14	169.8250		169.8250		A
AIR TO GROUND	15	169.9875		169.9875		A
9. Prepared By (Resource Unit Leader)		Approved By (Planning Section Chief)		Date	Time	
ANGELA PARKER RESL <i>Angela Parker</i>		WAYNE ROBBIE PSC2 <i>Wayne Robbie PSC2</i>		07/15/2015	2200	

Division/Group Assignment List (ICS 204 WF)

1. Incident Name:			3.			
AGGIE CREEK			Branch:		Division/Group:	
2. Operational Period: 0800-2200						
Date/Time From: 07/16/2015 0800 THU		Date/Time To: 07/16/2015 2200 THU		DIVISION G		
4. Operations Personnel						
OPERATIONS CHIEF - PLANNING		WILLIAM F KING MARK BERNAL (T)		OPERATIONS CHIEF - FIELD		
DIVISION G		BEAU KIDD		AIR ATTACK SUPERVISOR		
				PAUL DELMERICO LEROY HOLGUIN (T)		
				M. STOUT; G. BEDDOW; G. DANIELS A. DAMM (T)		
5. Resources Assigned this Period						
Strike Team / Task Force / Resource Designator		LWD	Leader	Number Persons	Drop Off PT./Time	Pick Up PT./Time
C-47 CREW - T1 - REDDING IHC		07/26	DANIEL MALLIA	20	BASE/0800	BASE/2200
C-34 CREW - T1 - MT. TAYLOR IHC		07/17	CHRISTIAN BRASHEARS	19	BASE/0800	BASE/2200
E-150 TRACKED UV - NODWELL		07/18	TIM KIEHL	1	BASE/0800	BASE/2200
E-234 TRACKED UV- NODWELL SVS		07/28		1	BASE/0800	BASE/2200
O-119 SOF2		07/23	ALAN VANDIVER	1	BASE/0800	BASE/2200
O-104 EMTF		07/16	MICHAEL POVEDA	1	BASE/0800	BASE/2200
6. Control Operations/Work Assignments:						
Mop-up, secure, and hold from Division G/T break to the Tatalina river to protect the Alyeska Trans Alaska pipeline infrastructure and Elliott Highway.						
7. Special Instructions:						
<ol style="list-style-type: none"> 1. Ensure LCES, Test communications and utilize human repeaters and Air Attack if needed. 2. Notify Op's prior to any ignitions. 3. Establish and communicate trigger points to all personnel. 4. Familiarize yourself with Management Action Points (M.A.P.'s) associated with your division, and be prepared to take appropriate actions. 5. DIVS; report GPS locations of all surface water withdrawal locations (pumps, engines, aviation) to OSC2 (report in NAD 83 decimal minutes format). 6. Notify Planning Ops for Resource and Supply needs by 1600 for next shift. Anticipate ordering 2-3 days in advance. 7. Coordinate with Air Attack for any aviation needs. 						
8. Division/Group Communication Summary						
Function	Channel	RX Frequency N/W	RX Tone/NAC	TX Frequency N/W	TX Tone/NAC	Mode
TACTICAL	6	166.775	167.9	166.775	167.9	A
COMMAND	8	173.0375	167.9	167.3250	167.9	A
AIR TO GROUND	14	169.8250		169.8250		A
AIR TO GROUND	15	169.9875		169.9875		A
9. Prepared By (Resource Unit Leader)			Approved By (Planning Section Chief)		Date	Time
ANGELA PARKER RESL <i>Angela Parker</i>			WAYNE ROBBIE PSC2 <i>Wayne Robbie PSC2</i>		07/15/2015	2200

Division/Group Assignment List (ICS 204 WF)

1. Incident Name:			3.			
AGGIE CREEK			Branch:		Division/Group:	
2. Operational Period: 0800-2200					DIVISION T	
Date/Time From: 07/16/2015 0800 THU		Date/Time To: 07/16/2015 2200 THU				
4. Operations Personnel						
OPERATIONS CHIEF - PLANNING		WILLIAM KING; MARK BERNAL		OPERATIONS CHIEF - FIELD		
				PAUL DELMERICO; LEROY HOLQUIN (T)		
DIVISION/GROUP SUPERVISOR		TERRANCE GALLEGOS		AIR ATTACK SUPERVISOR		
				M.STOUT; G.BEDDOW; G.DANIELS; A. DAMM (T)		
5. Resources Assigned this Period						
Strike Team / Task Force / Resource Designator		LWD	Leader	Number Persons	Drop Off PT./Time	Pick Up PT./Time
C-48 CREW - T1 - FEATHER RIVER IHC		07/26	ROBERT DANIELS	20	BASE/0800	BASE/2200
C-52 CREW -T2-BUCKLAND		07/24	ALOYSIOUS POTTEN	16	BASE/0800	BASE/2200
C-53 CREW - T2 - ST. MICHAEL		07/24	GEORGE KOBUK	19	BASE/0800	BASE/2200
C-50 CREW - T2 - TEAM RUBICON #3		07/23	E. LEVY	20	BASE/0800	BASE/2200
E-207 WATER TENDER -NSFD #32		07/25	N. PARKS; C. INGLEE	1	BASE/0800	BASE/2200
O-129 TFLD		07/17	KEVIN RIGGS	1	BASE/0800	BASE/2200
O-175 SOF2		07/28	CHRIS CHURCH	1	BASE/0800	BASE/2200
O-50 EMPF		07/17	MATTHEW HORTON	1	BASE/0800	BASE/2200
6. Control Operations/Work Assignments:						
Mop-up and hold containment lines to secure fire perimeter to protect Alyeska Trans-Alaska Pipeline infrastructures, Globe Creek, Tatalina subdivision, and Elliott Highway.						
7. Special Instructions:						
<ol style="list-style-type: none"> 1. Ensure LCES, Test communications and utilize human repeaters and Air Attack if needed. 2. Notify Op's prior to any ignitions. 3. Establish and communicate trigger points to all personnel. 4. Familiarize yourself with Management Action Points (M.A.P.'s) associated with your division, and be prepared to take appropriate actions. 5. DIVS; report GPS locations of all surface water withdrawal locations (pumps, engines, aviation) to OSC2 (report in NAD 83 decimal minutes format). 6. Notify Planning Ops for Resource and Supply needs by 1600 for next shift. Anticipate ordering 2-3 days in advance. 7. Coordinate with Air Attack for any aviation needs. 						
8. Division/Group Communication Summary						
Function	Channel	RX Frequency N/W	RX Tone/NAC	TX Frequency N/W	TX Tone/NAC	Mode
TACTICAL	2	168.2000	167.9	168.2000	167.9	A
COMMAND	7	167.1000	167.9	169.7500	167.9	A
AIR TO GROUND	14	169.8250		169.8250		A
AIR TO GROUND	15	169.9875		169.9875		A
9. Prepared By (Resource Unit Leader)			Approved By (Planning Section Chief)		Date	Time
ANGELA PARKER, RESL <i>Angela Parker</i>			WAYBE ROBBIE PSC2 <i>by Jeff PSC202</i>		07/15/2015	2200

Division/Group Assignment List (ICS 204 WF)

1. Incident Name:			3.				
AGGIE CREEK			Branch:		Division/Group: DIVISION U		
2. Operational Period: 0800-2200							
Date/Time From: 07/16/2015 0800 THU		Date/Time To: 07/16/2015 2200 THU					
4. Operations Personnel							
OPERATIONS CHIEF - PLANNING		WILLIAM F KING MARK BERNAL (T)		OPERATIONS CHIEF - FIELD			
				PAUL DELMERICO LEROY HOLGUIN (T)			
DIVISION/GROUP SUPERVISOR		TIM FONDRIEST TRENTON GIRARD (T)		AIR ATTACK SUPERVISOR			
				M. STOUT; G. BEDDOW; G. DANNIELS A. DAMM (T)			
5. Resources Assigned this Period							
Strike Team / Task Force / Resource Designator		LWD	Leader	Number Persons	Drop Off PT./Time	Pick Up PT./Time	
C-35 CREW - T1 - CARSON HOTSHOTS IHC		07/16	RICHARD SACK	21	BASE/0800	BASE/2200	
C-54 CREW - T2 - MT. VILLAGE		07/25	LUKE TUNUTMOAK	20	BASE/0800	BASE/2200	
C-49 CREW - T2IA - COBRAS - 4		07/23	J GUADALUPE MACIEL TORRES	22	BASE/0800	BASE/2200	
E-236 SKIDGINE - TYPE2 - FBK CONSTRUCTION		07/27	WILLIAM AVERSA	1	BASE/0800	BASE/2200	
O-175 SOF2		07/28	CHRIS CHURCH	1	BASE/0800	BASE/2200	
O-152 EMPF		07/25	RUSSELL LEAVITT	1	BASE/0800	BASE/2200	
6. Control Operations/Work Assignments:							
Mop-up and utilize water to control perimeter and increase protection to Alyeska Trans-Alaska Pipeline, Globe Creek, Tatalina structures, and Elliott Highway.							
7. Special Instructions:							
<ol style="list-style-type: none"> 1. Ensure LCES, Test communications and utilize human repeaters and Air Attack if needed. 2. Notify Op's prior to any ignitions. 3. Establish and communicate trigger points to all personnel. 4. Familiarize yourself with Management Action Points (M.A.P.'s) associated with your division, and be prepared to take appropriate actions. 5. DIVS; report GPS locations of all surface water withdrawal locations (pumps, engines, aviation) to OSC2 (report in NAD 83 decimal minutes format). 6. Notify Planning Ops for Resource and Supply needs by 1600 for next shift. Anticipate ordering 2-3 days in advance. 7. Coordinate with air attack for any aviation needs. 							
8. Division/Group Communication Summary							
Function	Channel	RX Frequency N/W	RX Tone/NAC	TX Frequency N/W	TX Tone/NAC	Mode	
TACTICAL	5	168.2500	167.9	168.2500	167.9	A	
COMMAND	7	167.1000	167.9	169.7500	167.9	A	
AIR TO GROUND	14	169.8250		169.8250		A	
AIR TO GROUND	15	169.9875		169.9875		A	
9. Prepared By (Resource Unit Leader)		Approved By (Planning Section Chief)		Date		Time	
ANGELA PARKER, RESL <i>Angela Parker</i>		WAYNE ROBBIE PSC2 <i>by Jeff PSC245</i>		07/15/2015		2200	

Division/Group Assignment List (ICS 204 WF)

1. Incident Name:			3.				
AGGIE CREEK			Branch:		Division/Group: DIVISION V		
2. Operational Period: 0800-2200							
Date/Time From: 07/16/2015 0800 THU		Date/Time To: 07/16/2015 2200 THU					
4. Operations Personnel							
OPERATIONS CHIEF - PLANNING		WILLIAM F KING MARK BERNAL (T)		OPERATIONS CHIEF - FIELD			
				PAUL DELMERICO LEROY HOLGUIN (T)			
DIVISION/GROUP SUPERVISOR		JASEN A TEAL		AIR ATTACK SUPERVISOR			
				M. STOUT; G. BEDDOW; G. DANIELS A. DAMM (T)			
5. Resources Assigned this Period							
Strike Team / Task Force / Resource Designator		LWD	Leader	Number Persons	Drop Off PT./Time	Pick Up PT./Time	
C-51 CREW - T2 - FORT YUKON #2		07/25	DONALD CARROLL	20	BASE/0800	BASE/2200	
O-96 STCR		07/20	ROBERT SOLLAMI	1	BASE/0800	BASE/2200	
O-175 SOF2		07/28	CHRIS CHURCH	1	BASE/0800	BASE/2200	
O-25 EMPF		07/28	RONALD SANDLER	1	BASE/0800	BASE/2200	
E-200 DELTA AMBULANCE		07/15	MARK ZASTANSKY	1	DP 37/0800	BASE/2200	
6. Control Operations/Work Assignments:							
Patrol, mop-up, and secure fireline to prevent further spread to Alyeska Trans-Alaska Pipeline, Elliott Highway corridor, and White River Recreation area.							
7. Special Instructions:							
<ol style="list-style-type: none"> 1. Ensure LCES, Test communications and utilize human repeaters and Air Attack if needed. 2. Notify Op's prior to any ignitions. 3. Establish and communicate trigger points to all personnel. 4. Familiarize yourself with Management Action Points (M.A.P.'s) associated with your division, and be prepared to take appropriate actions. 5. DIVS; report GPS locations of all surface water withdrawal locations (pumps, engines, aviation) to OSC2 (report in NAD 83 decimal minutes format). 6. Notify Planning Ops for Resource and Supply needs by 1600 for next shift. Anticipate ordering 2-3 days in advance. 7. Coordinate with Air Attack for any aviation needs. 							
8. Division/Group Communication Summary							
Function	Channel	RX Frequency N/W	RX Tone/NAC	TX Frequency N/W	TX Tone/NAC	Mode	
TACTICAL	3	168.6000	167.9	168.6000	167.9	A	
COMMAND	7	167.1000	167.9	169.7500	167.9	A	
AIR TO GROUND	14	169.8250		169.8250		A	
AIR TO GROUND	15	169.9875		169.9875		A	
9. Prepared By (Resource Unit Leader)		Approved By (Planning Section Chief)		Date		Time	
ANGELA PARKER RESL <i>Angela Parker</i>		WAYNE ROBBIE PSC2 <i>Wayne Robbie PSC2</i>		07/15/2015		2200	

Division/Group Assignment List (ICS 204 WF)

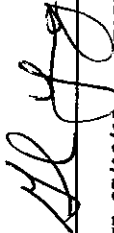
1. Incident Name:			3.				
AGGIE CREEK			Branch:		Division/Group: DIVISION W		
2. Operational Period: 0800-2200							
Date/Time From: 07/16/2015 0800 THU		Date/Time To: 07/16/2015 2200 THU					
4. Operations Personnel							
OPERATIONS CHIEF - PLANNING		WILLIAM F KING MARK BERNAL (T)		OPERATIONS CHIEF - FIELD		PAUL DELMERICO LEROY HOLGUIN (T)	
DIVISION/GROUP SUPERVISOR		DAVE MARTINEZ		AIR ATTACK SUPERVISOR		M. STOUT; G. BEDDOW; G. DANIELS A. DAMM (T)	
5. Resources Assigned this Period							
Strike Team / Task Force / Resource Designator		LWD	Leader		Number Persons	Drop Off PT./Time	Pick Up PT./Time
E-67 ENGINE T6 -BIG STATE WILDFIRE		07/21	ISRAEL SILAS		2	BASE/0800	BASE/2200
6. Control Operations/Work Assignments:							
Patrol, mop-up, and secure fireline to prevent further spread to Alyeska Trans-Alaska Pipeline, Elliott Highway corridor, and Wickersham area facilities.							
7. Special Instructions:							
<ol style="list-style-type: none"> 1. Ensure LCES, Test communications and utilize human repeaters and Air Attack if needed. 2. Notify Op's prior to any ignitions. 3. Establish and communicate trigger points to all personnel. 4. Familiarize yourself with Management Action Points (M.A.P.'s) associated with your division, and be prepared to take appropriate actions. 5. DIVS; report GPS locations of all surface water withdrawal locations (pumps, engines, aviation) to OSC2 (report in NAD 83 decimal minutes format). 6. Notify Planning Ops for Resource and Supply needs by 1600 for next shift. Anticipate ordering 2-3 days in advance. 7. Coordinate with Air Attack for any aviation needs. 							
8. Division/Group Communication Summary							
Function	Channel	RX Frequency N/W	RX Tone/NAC	TX Frequency N/W	TX Tone/NAC	Mode	
COMMAND	7	167.1000	167.9	169.7500	167.9	A	
TACTICAL	4	166.7250	167.9	166.7250	167.9	A	
AIR TO GROUND	14	169.8250		169.8250		A	
AIR TO GROUND	15	169.9875		169.9875		A	
9. Prepared By (Resource Unit Leader)			Approved By (Planning Section Chief)		Date	Time	
ANGELA PARKER, RESL <i>Angela Parker</i>			WAYNE ROBBIE PSC2 <i>by Jeff PSC204</i>		07/15/2015	2200	

Division/Group Assignment List (ICS 204 WF)

1. Incident Name:			3.			
AGGIE CREEK			Branch:		Division/Group:	
2. Operational Period: 0800-2200			STRUCTURE			
Date/Time From: 07/16/2015 0800 THU	Date/Time To: 07/16/2015 2200 THU					
4. Operations Personnel						
OPERATIONS CHIEF - PLANNING		WILLIAM F KING MARK BERNAL		OPERATIONS CHIEF - FIELD		
				PAUL DELMERICO LEROY HOLGUIN (T)		
DIVISION/GROUP SUPERVISOR		M. HOSTETLER J.HANSEN (T)		AIR ATTACK SUPERVISOR		
				M. STOUT; G. BEDDOW; G.DANIELS A. DAMM (T)		
5. Resources Assigned this Period						
Strike Team / Task Force / Resource Designator	LWD	Leader	Number Persons	Drop Off PT./Time	Pick Up PT./Time	
E-62 ENGINE T6 NORTH DAKOTA 62	07/20	CARSON KERR	3	BASE/0800	BASE/2200	
E-219 ENGINE - T6 - SOA-DOF	07/17	RYAN VICE	1	BASE/0800	BASE/2200	
E-143 ENG/T4 - FORREST FIRE	07/19	BEN ENGELHARDT	2	BASE/0800	BASE/2200	
E-63 ENGINE, T6-NORTH DAKOTA 63	07/20	AARON BUCHOLZ	3	BASE/0800	BASE/2200	
E-64 ENGINE, T4, ENG-64 NORTH DAKOTA K 41	07/20	JON COOPER	4	BASE/0800	BASE/2200	
O-95 TFLD	07/16	GEORGE BROWN	1	BASE/0800	BASE/2200	
E-103 METALLOGENY	07/18	MARIA SANDERS	1	BASE/0800	BASE/2200	
6. Control Operations/Work Assignments:						
Engines will support other DIVS with mop-up. All resources will be available for IA as well as the need for structure protection.						
7. Special Instructions:						
<ol style="list-style-type: none"> 1. Ensure LCES, Test communications and utilize human repeaters and Air Attack if needed. 2. Notify Op's prior to any ignitions. 3. Establish and communicate trigger points to all personnel. 4. Familiarize yourself with Management Action Points (M.A.P.'s) associated with your division, and be prepared to take appropriate actions. 5. DIVS; report GPS locations of all surface water withdrawal locations (pumps, engines, aviation) to OSC2 (report in NAD 83 decimal minutes format). 6. Notify Planning Ops for Resource and Supply needs by 1600 for next shift. Anticipate ordering 2-3 days in advance. 7. Coordinate with Air Attack for any aviation needs. 						
8. Division/Group Communication Summary						
Function	Channel	RX Frequency N/W	RX Tone/NAC	TX Frequency N/W	TX Tone/NAC	Mode
TACTICAL	6	166.775	167.9	166.775	167.9	A
COMMAND	8	173.0375	167.9	167.3250	167.9	A
AIR TO GROUND	14	169.8250		169.8250		A
AIR TO GROUND	15	169.9875		169.9875		A
9. Prepared By (Resource Unit Leader)		Approved By (Planning Section Chief)		Date		Time
ANGELA PARKER RESL <i>Angela Parker</i>		WAYNE ROBBIE <i>by Jeff A. PSC2LT</i>		07/15/2015		2200

AIR OPERATIONS SUMMARY

PREPARED BY: Galen Young



PREPARED DATE/TIME: 07/15/15 2100

1. INCIDENT NAME: Aggle Creek		2. OPERATIONAL PERIOD DATE: 07/16/15		START TIME: 0900	END TIME: 2300	SUNRISE: 0355	SUNSET: 2359
3. REMARKS (Safety Notes, Hazards, Air Operations Special Equipment, etc.) Thunderstorms, erratic winds. Low wires, cables, power lines. Be aware of Aiyeska Pipeline Co. flying the pipeline in rotor wing in AM. They will notify if in area. Divisions, contact Wickersham Helibase for all aviation needs, include coordinates of possible helispot/medivac locations. Possible smoke concerns. Wickersham Helibase 907-347-9613 Track all retardant usage and location if used. Heavy Helibase SAT Phone 480-768-2500, Code 8816-325-65864							
6. PERSONNEL		Phone	7. FREQUENCIES	AM	FM	8. FIXED-WING	
AODB: Galen Young	575-574-8720	AIR/AIR FW:	120.150			# Avail / Type/ Make-Model / FAA N# / Base(s)	
ASGS: Kent Wedin 907-378-8211	575-538-1075	AIR/AIR RW:	121.050			Available through Dispatch	
ATGS: Mike Stout	661-877-7889	AIR/GRD: Pri	169.8250			Available through Dispatch	
		AIR/GRD: Sec	169.9875				
ATGS: Gerry Beddow	928-386-3743	COMMAND:	See Com Plan				
ATGS: Gary Daniel	602-499-5297					AA- N975AA Stout, Beddow	
ATGS(T): Antom Damm	360-561-1989					AA- N249CP Daniel, Damm	
HEB2: Rita Clipperton	530-559-0905	DECK:	163.100			Fort Wainwright	
		AIR GUARD:	168.626				
			Tone 110.9				

9. HELICOPTERS (Use Additional Sheets As Necessary)

FAA N#	TY	MAKE/MODEL	BASE	AVAILABLE	START	REMARKS	FAA N#	TY	MAKE/MODEL	BASE	AVAILABLE	START	REMARKS
N173BH	3	A-Star	Wainwright	0900	1000								
N73HJ	2	Bell 212	Wainwright	0900	1000								
N611CK	1	S-61	Wainwright	0900	1000								
N214TH	1	Bell 214	Wainwright	0900	1000								

10. TASK/MISSION/ASSIGNMENT (Type/Function Includes: Air Tactical, Retardant, Recon, Personnel Transport, Water Dropping, S&R, etc.)

TYPE/FUNCTION	NAME OF PERSONNEL OR CARGO (if applic) OR INSTRUCTIONS FOR TACTICAL AIRCRAFT	MISSION START	FLY FROM	FLY TO
Bucket drops per request	Division Sup. To request and coordinate with Air Attack or helibase.			
Recon Flights	To be approved by OPS or AOBD			
Cargo / Sling	Per Request from Div Sups, all sling loads / crew shuttles			
Ops Recon				
Div Sup Recon				
DIPSITES				

HEALTH AND SAFETY MESSAGE

SAFETY starts with ***YOU***

We are **ALL** accountable for **SAFE** behaviors

INCIDENT: Aggie Creek

DATE: 07/15

Operational Period: 07/16

Major Hazards and Risks:

- Hygiene
- Mop Up
- Fatigue
- Driving

Narrative:

Lots of folks are visiting the medical tent at Wickersham base camp. Maintain good personal hygiene by washing your hands before every meal and shower on a regular basis.

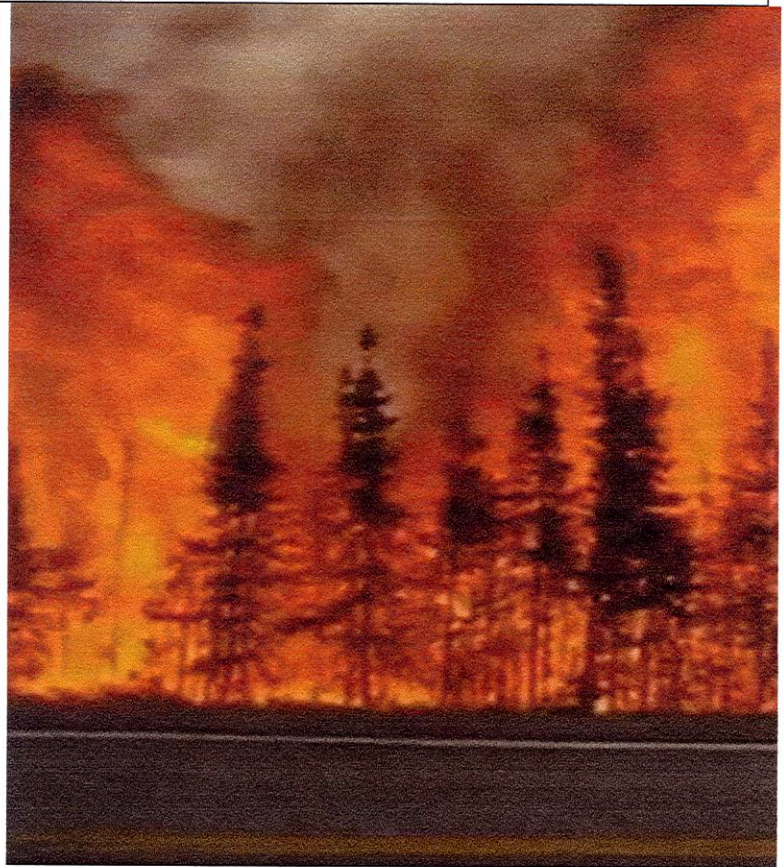
The fire is in the mop up stage and folks may be letting their guard down. Stay focused on the task at hand, check for hazards prior to starting work at new work site. Do not become complacent and allow yourself to be injured.

Combat fatigue by working in pairs, take short breaks throughout the day and stay hydrated. Get to sleep as soon as reasonably possible when going off shift.

Many resources have been on the incident long enough to become familiar with the highway and access roads in the fire area. History teaches us that the more familiar we are, the more likely we will exhibit risky behavior. Maintain safe distances between you and other vehicles. Travel at a safe speed for the conditions and be prepared for the wait time at the construction sites on the Elliot highway.



Don't let fatigue compromise your safety



Incident Safety Officer: Allan Setzer

Incident Action Plan Safety Analysis		Operational Period: Day Shift- July 16, 2015		Incident: Aggie Creek				
Identification of Hazards and Risk Assessment		Assignment: Multi-All (Suppression-Indirect, etc.)		Mission Objective(s): Safety of Incident Responders and Public				
Pre-mitigation		Mitigation(s), Warnings and Remedies		Post-mitigation				
Hazards	Probability	Severity	Risk Level	Division/Group Branch - Location	Probability	Severity	Risk Level	Acceptable Yes/No

Driving	Likely	Critical	Serious	ALL	Occasional	Significant	Minor	Yes
Foot Travel	Likely	Critical	Serious	ALL	Occasional	Significant	Minor	Yes
Dehydration Heat Related Illness	Likely	Critical	Serious	ALL	Occasional	Significant	Minor	Yes
Line Construction	Frequent	Critical	Critical	ALL	Occasional	Critical	Moderate	Yes
Wildlife (Bears, moose, etc)	Likely	Critical	Serious	ALL	Rarely	Critical	Minor	Yes
Ignition Operations	Likely	Critical	Serious	G and A	Occasional	Critical	Moderate	Yes
Chainsaw Operations	Likely	Catastrophic	Critical	ALL	Occasional	Catastrophic	Serious	Yes

Slowdown in fire area; observe speed limits; Lights on; Practice "Defensive Driving"; Use spotter when backing; Evaluate road conditions and avoid driving on wet or muddy roads if possible;

Keep spacing while hiking; scout route of travel; continually scan surrounding and "take your time";

Early recognition of heat of HEAT RELATED ILLNESS; Take frequent break; Drink fluids throughout shift; store extra water at drop points; eat snacks throughout the shift.

Ensure LACES is in place

Use Downhill Line Checklist (IRPG pg. 8)

Utilize Risk Management Process (IRPG pg. 1)

Do not rely on aircraft as mode of transportation.

No food in sleeping areas

Do not leave food scraps on the fireline or spike camp; back haul away all food garbage daily

Avoid surprising bears at close distance, make plenty of noise, look for bear sign

Never run from a bear; stand upright and tall, don't bend over.

Detour around areas where you see fresh animal carcasses or fresh bear scat

Be alert for moose crossing roadways while driving. Never approach moose on the fireline; safely leave area


Only personnel trained in the use of each device will be authorized to use firing equipment. Wear appropriate PPE.


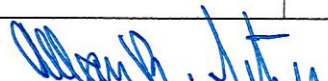
Ensure all personnel are aware of firing operation that may affect them, i.e. adjacent divisions. Ensure aerial/ground ignition plans have been adequately developed and personnel are briefed.

"Hazard Tree Guidelines" (IRPG pg. 22-23)

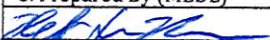

Look up, down and around for hazard tree indicators. Only fell and buck trees within your expertise and training. Follow "Procedural Felling Operations" (IRPG pg. 79). Do not fell trees in high wind events.

INCIDENT RADIO COMMUNICATIONS PLAN (ICS 205)

1. Incident Name: AGGIE CREEK		2. Date/Time Prepared: Date: 07/15/2015 Time: 1058		3. Operational Period: 0800-2200		Date/Time To: 07/16/2015 2200		THU	THU	
4. Basic Radio Channel Use:										
Zone Group	Ch #	Function	Channel Name/Trunked Radio System Talkgroup	Assignment	RX Freq	RX Tone/NAC	TX Freq	TX Tone/NAC	Mode (A, D, or M)	Remarks
	1	TACTICAL	TAC 1	DIVISION A	168.0500	167.9	168.0500	167.9	A	
	2	TACTICAL	TAC 2	DIVISION T	168.2000	167.9	168.2000	167.9	A	
	3	TACTICAL	TAC 3	DIVISION V	168.6000	167.9	168.6000	167.9	A	
	4	TACTICAL	TAC 4	DIVISION W	166.7250	167.9	166.7250	167.9	A	
	5	TACTICAL	TAC 5	DIV U	168.2500	167.9	168.2500	167.9	A	
	6	TACTICAL	TAC 6	STRUCTURE/IA, G	166.775	167.9	166.775	167.9	A	
	7	COMMAND	CMD 6	COMMAND 6	167.1000	167.9	169.7500	167.9	A	HAYSTACK MTN.
	8	COMMAND	CMD 7	COMMAND 7	173.0375	167.9	167.3250	167.9	A	WICKERSHAM DOME
	9	COMMAND	CMD 8	COMMAND 8	170.0500	167.9	164.5750	167.9	A	ICP
	11	COMMAND	DOF A	COMM W/ LOCAL	151.2650		159.2700	141.3	A	ESTER DOME
	12	COMMAND	DOF B	COMM W LOCAL	151.2950		159.3000	141.3	A	NANANA; IA ONLY
	13	TACTICAL	IA TAC 1	COMM W/LOCAL	159.3750		159.3750		A	IA ONLY
	14	AIR TO GROUND	A/G 6	A2G TACTICAL	169.8250		169.8250		A	PRIMARY
	15	AIR TO GROUND	A/G 8	A2G AIR ATTACK	169.9875		169.9875		A	
	16	AIR GUARD	AIR GUAR	AIR GUARD	168.6250	110.9	168.6250	110.9	A	EMERGENCY USE ONLY
5. Special Instructions:										
6. Prepared By (Communications Unit Leader)				Name: RICK LAZO		Signature: 		Date/Time: 07/15/2015 1058		
ICS 205				IAP Page						

MEDICAL PLAN 206		FIRE NAME Aggie Creek		DATE PREPARED 07/15/15		WORK PERIOD 07/16/15					
AID STATIONS/EMT PLACEMENT											
NAME		LOCATION		PHONE		PARAMEDIC YES NO					
Mike Lund EMIF/ Robert Bacon EMPF		ICP		575-770-6694 / 907-371-5736		X					
Mike Poveda EMTF		Div. G		720-341-1897				X			
Matt Horton EMPF		Div. T		919-622-1295		X					
Russ Leavitt EMPF		Div. U		435-772-4107		X					
Covered by Delta Ambulance		Div. W		907-750-2521		X					
Ron Sandler EMPF		Div. V		707-218-7824		X					
Brad Nelson EMTF		Div. A		816-244-1810				X			
Laura Belino EMT		Wickersham Dome Base Camp		509-860-1189				X			
M.ZastavskiyEMT, K.WatsonEMP		Delta Ambo Div V:DP 37		907-750-2521		X					
AMBULANCE SERVICES											
NAME		LOCATION		PHONE		PARAMEDIC YES NO					
Delta Ambulance		DP 37		907-750-2521		X					
Steese Fire/EMS		800 William C. Leary LN.;Fairbanks, AK		907-450-6504		X					
AIR AMBULANCE											
NAME		PHONE		TYPE OF AIRCRAFT		CAPABILITY					
INCIDENT AIRCRAFT		BY RADIO HELITAK		A-STAR 73BH 212 73HJ		1PT SITTING 1 PT Backboard					
GUARDIAN FLIGHT ALASKA (FIXED)		888-997-3822		KINGAIR 200/LEARJET 35		1 ALS/2 BLS					
STATE TROOPERS/ ARMY MAST		907-451-5100		BLACK HAWK		SHORT/LONG HAUL, ALS					
HOSPITALS											
HOSPITAL		LOCATION		TRAVEL TIME AIR/GROUND		PHONE		HELIPAD YES NO		BURN CENTER YES NO	
FAIRBANKS MEMORIAL LEVEL 3 TRAUMA		1650 COWLES ST FAIRBANKS, AK 99701 N 64° 49.94, W 147° 44.52		30 MIN 1 HR		907-458-5555		X			
1 ST CARE CENTER CLINIC/URGENT CARE		1101 NOBLE ST FAIRBANKS, AK 99701 8 AM TO 8 PM, 7 DAYS		N/A 1 HR		907-459-3500				X	
PROVIDENCE ALASKA LEVEL 3 TRAUMA		3200 PROVIDENCE DR. ANCHORAGE, AK 99508 N 61° 50.09, W 149° 49.08		2 HRS 6 HRS		907-212-3111		X			
HARBORVIEW MEDICAL CENTER LEVEL 1 TRAUMA		325 9 TH AVE SEATTLE, WA 98104 N 47° 36.14, W 122° 19.21		3 HRS FIX		206-284-2876		X		X	
MEDL: Mike Lund and Robert Bacon 				Safety: 							

Medical Plan (ICS 206 WF)

1. Incident/Project Name		2. Operational Period 0800-2200	
AGGIE CREEK		Date/Time From: 07/16/2015 0800 Wed	Date/Time To: 07/16/2015 2200 Wed
6. Area Location Capability			
Branch Division/Group			
DIV. G	EMS Responders & Capability:	Mike Poveda EMTF	
	Equipment Available On Scene:	Backboard, Trauma, BLS, O2	
	Medical Emergency Channel:	COMMAND 7	
	ETA For Ambulance to Hospital:		
	Air:	30 minutes	
	Ground:	2 hours	
	Approved Helispot:	H-90	
	Lat:	N65° 18'	
Long:	W148° 19' 49.4394"		
DIV. V	EMS Responders & Capability:	Ron Sandler	
	Equipment Available On Scene:	ALS, Narcs, Trauma	
	Medical Emergency Channel:	COMMAND 7	
	ETA For Ambulance to Hospital:		
	Air:	30 minutes	
	Ground:	1 hour	
	Approved Helispot:	H-160	
	Lat:	N65° 14.652	
Long:	W148° 05.657		
DIV. U	EMS Responders & Capability:	Russ Leavitt EMPF	
	Equipment Available On Scene:	ALS, Narcs, O2, Trauma	
	Medical Emergency Channel:	COMMAND 7	
	ETA For Ambulance to Hospital:		
	Air:	30 minutes	
	Ground:	1 hour	
	Approved Helispot:	H-120	
	Lat:	N65° 15.766	
Long:	W148° 09.597		
DIV. A	EMS Responders & Capability:	Brad Nelson EMTF	
	Equipment Available On Scene:	Trauma, BLS, O2	
	Medical Emergency Channel:	COMMAND 7	
	ETA For Ambulance to Hospital:		
	Air:	30 minutes	
	Ground:	2 hour	
	Approved Helispot:	H-15	
	Lat:	N65° 13.281	
Long:	W148° 09.886		
DIV. T	EMS Responders & Capability:	Matt Horton EMPF	
	Equipment Available On Scene:	Backboard, ALS, Narcs, Trauma	
	Medical Emergency Channel:	COMMAND 7	
	ETA For Ambulance to Hospital:		
	Air:	30 minutes	
	Ground:	1.5 hours	
	Approved Helispot:	H-95	
	Lat:	N65° 17' 54.8412"	
Long:	W148° 17' 46.2588"		
DIV. W	EMS Responders & Capability:	Delta Ambulance	
	Equipment Available On Scene:	ALS Ambulance	
	Medical Emergency Channel:	COMMAND 7	
	ETA For Ambulance to Hospital:		
	Air:	30 minutes	
	Ground:	1 hour	
	Approved Helispot:	Helibase	
	Lat:	N65° 10.316	
Long:	W148° 05.784		
8. Prepared By (MEDL)	9. Date/Time	10. Reviewed By (Safety Officer)	11. Date/Time
	07/15/15 2100		07/15/15 2100

Medical Incident Report

Use items one through nine to communicate situation to communications/dispatch.

1. CONTACT COMMUNICATIONS/DISPATCH

Ex: "Communications, Div. Alpha. Stand-by for Priority Medical Incident Report." (If life threatening request designated frequency be cleared for emergency traffic.)

2. INCIDENT STATUS: Provide incident summary and command structure

Nature of Injury/Illness		<i>Describe the injury (Ex: Broken leg with bleeding)</i>
Incident Name:		<i>Geographic Name + "Medical" (Ex: Trout Meadow Medical)</i>
Incident Commander:		<i>Name of IC</i>
Patient Care:		<i>Name of Care Provider (Ex: EMT Smith)</i>

3. INITIAL PATIENT ASSESSMENT: Complete this section for each patient. This is only a brief, initial assessment. Provide additional patient info after completing this 9 Line Report. See page 100 for detailed Patient Assessment.

Number of Patients:	Male/Female	Age:	Weight:
Conscious?	<input type="checkbox"/> YES	<input type="checkbox"/> NO = MEDEVAC!	
Breathing?	<input type="checkbox"/> YES	<input type="checkbox"/> NO = MEDEVAC!	
Mechanism of Injury: <i>What caused the injury?</i>			
Lat./Long. (Datum WGS84) <i>Ex: N 40° 42.45'x W 123° 03.24'</i>			

4. SEVERITY OF EMERGENCY, TRANSPORT PRIORITY

SEVERITY	TRANSPORT PRIORITY
<input type="checkbox"/> URGENT-RED Life threatening injury or illness. Ex: Unconscious, difficulty breathing, bleeding severely, 2°-3° burns more than 4 palm sizes, heat stroke, disoriented.	Ambulance or MEDEVAC helicopter. Evacuation need is IMMEDIATE.
<input type="checkbox"/> PRIORITY-YELLOW Serious injury or illness. Ex: Significant trauma, not able to walk, 2°-3° burns not more than 1-2 palm sizes	Ambulance or consider air transport if at remote location. Evacuation may be DELAYED.
<input type="checkbox"/> ROUTINE-GREEN Not a life threatening injury or illness. Ex: Sprains, strains, minor heat-related illness	Non-Emergency. Evacuation considered Routine of Convenience.

5. TRANSPORT PLAN:

Air Transport:	(Agency Aircraft Preferred)			
<input type="checkbox"/> Helispot	<input type="checkbox"/> Short-haul/Hoist	<input type="checkbox"/> Life Flight	<input type="checkbox"/> Other	
Ground Transport:				
<input type="checkbox"/> Self-Extract	<input type="checkbox"/> Carry-Out	<input type="checkbox"/> Ambulance	<input type="checkbox"/> Other	

6. ADDITIONAL RESOURCE/EQUIPMENT NEEDS:

<input type="checkbox"/> Paramedic/EMT(s)	<input type="checkbox"/> Crew(s)	<input type="checkbox"/> SKED/Backboard/C-Collar
<input type="checkbox"/> Burn Sheet(s)	<input type="checkbox"/> Oxygen	<input type="checkbox"/> Trauma Bag
<input type="checkbox"/> Medication(s)	<input type="checkbox"/> IV/Fluid(s)	<input type="checkbox"/> Cardiac Monitor/AED
<input type="checkbox"/> Other (e.g., splints, rope rescue, wheeled litter)		

7. COMMUNICATIONS:

Function	Channel Name/Number	Receive (Rx)	Tone/NAC*	Transmit (Tx)	Tone/NAC*
<i>Ex: Command</i>	<i>Forest Rpt, Ch. 2</i>	<i>168.3250</i>	<i>110.9</i>	<i>171.4325</i>	<i>110.9</i>
COMMAND					
AIR-TO-GRND					
TACTICAL					

Ensure that Air Attack is contacted, if Air Medivac is used

8. EVACUATION LOCATION:

Lat./Long. (Datum WGS84) <i>EX: N 40° 42.45'x W 123° 03.24'</i>	
Patient's ETA to Evacuation Location:	
Helispot/Extraction Size and Hazards	

9. CONTINGENCY:

<p>Considerations: If primary options fail, what actions can be implemented in conjunction with primary evacuation method? Be thinking ahead...</p>

REMEMBER:

- **Confirm ETAs of resources ordered.**
- **Act according to your level of training.**
- **Be Alert. Keep Calm. Think Clearly. Act Decisively.**

**SOUTHWEST
INCIDENT MANAGEMENT
TEAM #5
RICH NIETO – INCIDENT COMMANDER**

July 12, 2015

To: All Incident Personnel for the Aggie Creek Fire (AK-FAS-511515)

From: Richard Nieto, Incident Commander

Subject: Ethical Behavior and Conduct

The Southwest Area Incident Management Team 5 is committed to the highest principles of ethical behavior and conduct. This team fully endorses the laws and policies regarding discrimination, harassment, hazing, and other inappropriate behavior, and will not tolerate misconduct in any form. We expect an attitude of mutual respect for all incident personnel and the public we serve.

As Incident Commander, I expect all personnel assigned to this incident to carry themselves with the highest level of conduct and integrity. As ambassadors, I encourage each of you to represent this Incident Management Team, as well as your agency in a professional and respectful manner.

I am committed to the policy that everyone is entitled to a safe work environment from the moment of dispatch until your return to the home unit. I expect and demand nothing less than work practices that reflect a “Safety First” attitude.

Your actions reflect upon all of us.

Sincerely,

Richard Nieto

Richard Nieto
Incident Commander
Southwest Interagency Management Team #5



*HUMAN RESOURCES MESSAGE
AGGIE CREEK FIRE, FAIRBANKS, AK
JULY 16, 2015*



YOUR RIGHTS AND RESPONSIBILITIES

Rights:

- ✦ To work in a harassment-free environment where people treat one another with dignity, equity, courtesy and respect.
- ✦ To say "no" to unwelcome advances or requests for favors.
- ✦ To file complaints or grievances through appropriate avenues.

Responsibilities:

- ✦ To behave in a manner that treats people with dignity, equity, courtesy and respect.
- ✦ To abide by agency and incident ethics and conduct regulations.
- ✦ To report any harassment or other inappropriate behavior you observe or experience.

TRAINING MESSAGE

TRAINEES: The Incident Trainee/Trainer Data Form is included in today's IAP for your convenience and use. Complete and submit the form to Gina Melchor, Training Specialist (t), for entry into the database before the end of your assignment. A drop box will be located in the North to Alaska tent to collect the forms, and I'll be at the briefing each morning to pick up the forms at that time. Remember to close out all training packages with the TNSP (t) during DEMOB.

Thank you, Gina Melchor, HRSP/TNSP (t)

Incident Trainee/Trainer Data Form

Complete and drop off with the Training Specialist for entry into database before end of assignment.
Remember to close out all training packages with the Training Specialist prior to going through DEMOB.

A. Trainee Data

Trainee Name: _____ ICS Trainee Position: _____
IFPM Trainee? Y N FS-FPM Trainee? Y N Regional Priority Trainee? Y N
Request # (A, C, E or O): _____ Agency Designator (Example: AK-FAS): _____
Agency: _____ Crew/Module Name: _____ Cell Phone: _____
Fire Name: _____ Date Assigned: _____

Person and location your training package should be mailed to: (Supervisor, Training Officer, etc.):

Name: _____ Title: _____ Home Unit: _____
Agency Address: _____
City: _____ State: _____ Zip Code: _____ Phone: _____

B. Trainee Prerequisites

1. Valid Red Card or agency certification card? Yes No
2. Trainee has current position task book issued by home unit? Yes No

C. Trainer/Evaluator Data

Trainer / Evaluator Name: _____
ICS position on fire: _____ Home Unit: _____
Address: _____ City: _____
State: _____ Zip Code: _____ Cell / Contact : _____

D. Trainee Goals - (3 tasks or objectives you would like to address).

1. _____
2. _____
3. _____

Aggie Creek Fire

Telephone List

7/16/2015

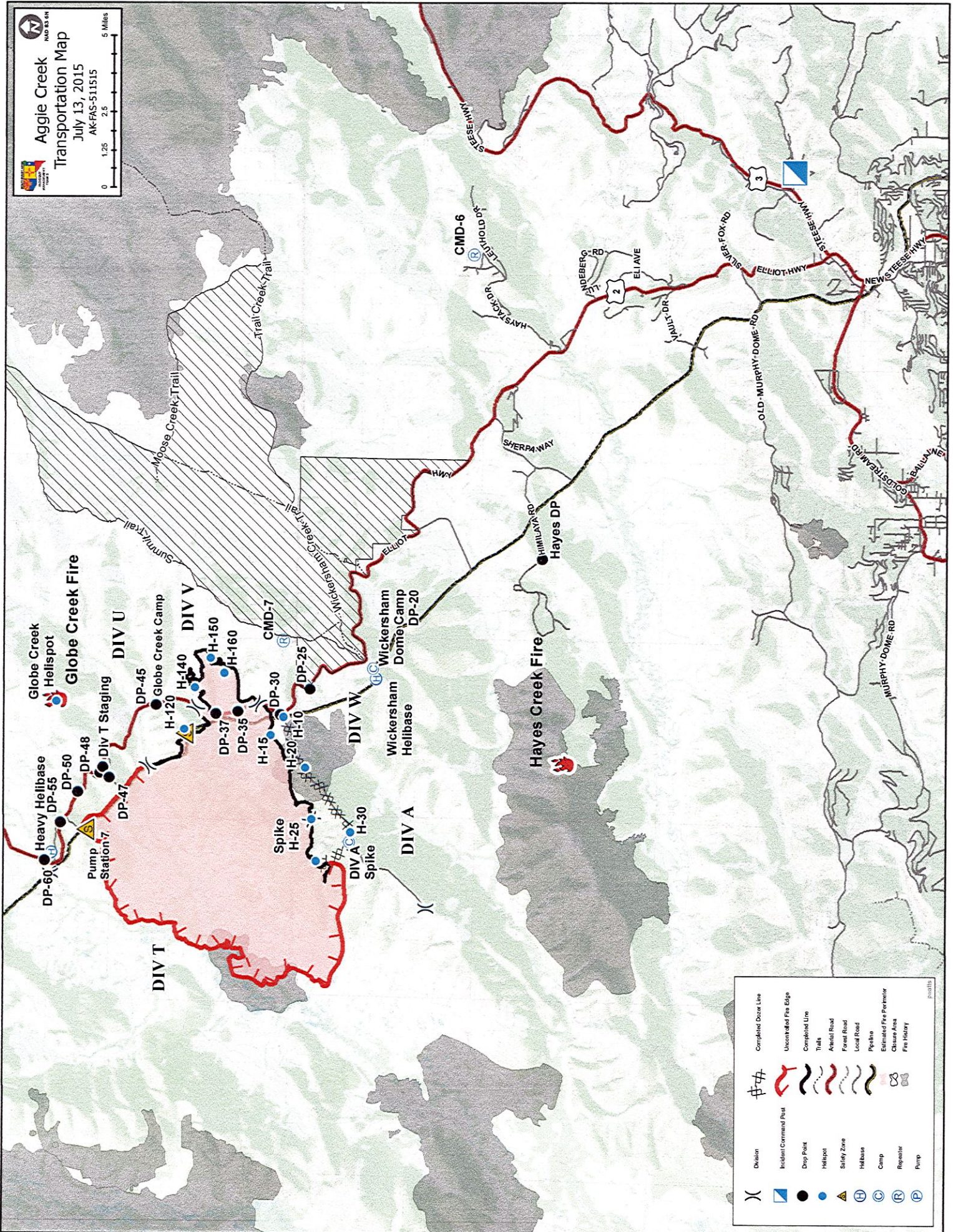
<u>Demob:</u>	<u>907-451-121</u>	<u>LOGS:</u>	<u>907-451-1279</u>
<u>Demob Fax:</u>	<u>907-451-1253</u>	<u>IMET (Christian):</u>	<u>907-250-5541</u>
<u>Plans:</u>	<u>907-451-1238</u>	<u>COMMO Cell:</u>	<u>907-687-5918</u>
<u>Finance:</u>	<u>907-451-1278</u>	<u>COMMO Landline:</u>	<u>907-451-1203</u>
<u>IC:</u>	<u>907-451-1247</u>		
<u>Ordering Fax:</u>	<u>907-451-1231</u>		
<u>INFO:</u>	<u>907-451-1206</u>		
<u>COMP/Claims</u>	<u>907-451-1284</u>		
<u>Supply Track Phone:</u>	<u>907-750-8236</u>		
<u>Supply (Valerie Williams):</u>	<u>575-751-4716</u>		
<u>Base Camp Food (Hess):</u>	<u>619-495-9276</u>		
<u>Base Camp Supply (John):</u>	<u>907-750-7816</u>		
<u>Base Camp Mgr. (Harley):</u>	<u>907-347-3580</u>		
<u>Security SECM (T) (Ramona):</u>	<u>575-361-4402</u>		
<u>Security SECM (George Hedges):</u>	<u>205-269-0728</u>		
<u>Ground Support:</u>	<u>928-848-2474</u>		
<u>Helibase (Rita):</u>	<u>530-559-0905</u>		
<u>Wickersham Helibase:</u>	<u>907-347-9613</u>		

Aggie Creek Fire

Cell Phone List

7/16/2015

<u>IC:</u>	<u>Rich Nieto</u>	<u>907-687-3265</u>
<u>IC:</u>	<u>John Pearson</u>	<u>907-388-6448</u>
<u>Plans:</u>	<u>Wayne Robbie</u>	<u>907-378-4176</u>
<u>Liaison:</u>	<u>Scott Cooke</u>	<u>907-388-2678</u>
<u>SOPL:</u>	<u>Bob Lineback</u>	<u>907-371-0179</u>
<u>Air OPS:</u>	<u>Galen Young</u>	<u>575-574-8720</u>
<u>Air Support:</u>	<u>Kent Wedin</u>	<u>907-378-8211</u>
<u>Supply:</u>	<u>Valerie Williams</u>	<u>907-388-0961</u>
<u>Communications:</u>	<u>Rick Lazo</u>	<u>907-371-5626</u>
<u>Medical:</u>	<u>Robert Bacon</u>	<u>907-371-5736</u>
<u>Finance:</u>	<u>Billy Zamora</u>	<u>907-347-4802</u>
<u>Logistics:</u>	<u>Margie Guzman</u>	<u>907-799-9560</u>
<u>Safety</u>	<u>Allan Setzer</u>	<u>907-371-7786</u>



	Division		Incident Command Point		Completed Drop Line
	Uncontrolled Fire Edge		Drop Point		Helispot
	Completed Line		Aerial Road		Safety Zone
	Trail		Forest Road		Helibase
	Pipeline		Camp		Repairer
	Estimated Fire Perimeter		Pump		
	Closure Area				
	Fire History				

ACTIVITY LOG (ICS 214)

1. Incident Name:

2. Operational Period: Date From:
Time From:

Date To:
Time To:

7. Activity Log (continuation):

Date/Time

Notable Activities

8. Prepared by: Name: _____ Position/Title: _____ Signature: _____

ICS 214, Page 2

Date/Time: _____