



## **Southwest Area IMT 5**

**Richard Nieto IC**

**Friday – July 17, 2015**

**Dayshift 0800 – 2200**

**Aggie Creek**

**AK-FAS-511515**

**Fire Code JTZ2**

**State Code 73-511515**

**FS Code: PNJTZ2 1502**

**Hayes Creek**

**AK-FAS-511557**

**Fire Code JT3U**

**State Code 73-511557**

**FS Code: PNJT3U 1502**

### **AGGIE CREEK FIRE QR CODES**

**DROPBOX (APPLE)**



<http://tinyurl.com/AggieCreek>

**GOOGLE DRIVE (ANDROID)**




<http://tinyurl.com/Aggie-Creek-Fire-Maps>

## INCIDENT OBJECTIVES (ICS 202)

<b>1. Incident Name:</b>		<b>2. Operational Period:</b> 0800-2200	
AGGIE CREEK		Date/Time From: 07/17/2015 0800 FRI	Date/Time To: 07/17/2015 2200 FRI
<b>3. Objective(s):</b>			
<b>Value at Risk</b>			
<ul style="list-style-type: none"> <li>• Tatalina Subdivision.</li> <li>• Alyeska Trans-Alaska Pipeline and associated infrastructure (valves, pump stations, snow pad).</li> <li>• Elliott Highway corridor and structures.</li> <li>• Native allotments and improvements.</li> <li>• Communities of Hayes, Himalaya, and Haystack.</li> <li>• BLM cabins and communication sites.</li> </ul>			
<b>Incident Objectives</b>			
<ul style="list-style-type: none"> <li>• Fire personnel and public safety is fully achieved through the application and implementation of sound risk management analysis for incident activities.</li> <li>• Values at risk are protected from adverse fire and incident management actions.</li> <li>• Traffic along the Elliott Highway is minimally disrupted.</li> <li>• Native allotments are protected with priority on structure protection.</li> <li>• Information and intelligence is gathered and collected on infrastructure and sensitive resources for ongoing fire management planning and long-term analysis.</li> </ul>			
<b>Incident Requirements:</b>			
<ul style="list-style-type: none"> <li>• Utilize appropriate suppression tactics to minimize negative impacts to natural, wildlife, and cultural resources.</li> <li>• Incident personnel support area initial attack as requested by the host agency.</li> <li>• Provide fire and smoke related information to the media and residents.</li> <li>• Foster and maintain relationships between partners, agencies, and communities currently and potentially affected by the fire.</li> <li>• Cost containment is factored into risk management decision making.</li> </ul>			
<b>4. Operational Period Command Emphasis:</b>			
<b>General Situational Awareness:</b>			
See Attached Safety Plan			
<b>5. Site Safety Plan Required?</b> Yes <input type="checkbox"/> No <input checked="" type="checkbox"/>			
<b>Approved Site Safety Plan(s) Located at:</b>			
<b>6. Incident Action Plan</b> (the items checked below are included in this Incident Action Plan):			
<input checked="" type="checkbox"/> ICS 202	<input type="checkbox"/> ICS 207	Other Attachments:	
<input checked="" type="checkbox"/> ICS 203	<input type="checkbox"/> ICS 208	<input checked="" type="checkbox"/> MEDICAL INCIDENT	
<input checked="" type="checkbox"/> ICS 204	<input checked="" type="checkbox"/> ICS 220	<input checked="" type="checkbox"/> HUMAN RESOUCE	
<input checked="" type="checkbox"/> ICS 205	<input checked="" type="checkbox"/> Map/Chart	<input checked="" type="checkbox"/> PHONE LIST	
<input type="checkbox"/> ICS 205A	<input checked="" type="checkbox"/> Weather Forecast/Tides/Currents	<input checked="" type="checkbox"/> UNIT LOG	
<input checked="" type="checkbox"/> ICS 206			
<b>7. Prepared by:</b> WAYNE ROBBIE	<b>Position/Title:</b> PSC2	<b>Signature:</b> <i>Wayne Robbie</i>	
<b>8. Approved by Incident Commander:</b>	<b>Name:</b> RICHARD NIETO, ICT2	<b>Signature:</b> <i>Richard Nieto</i>	
ICS 202	IAP Page	<b>Date/Time:</b> 07/16/2015 2200	<i>For Rich Nieto</i>

## ORGANIZATION ASSIGNMENT LIST (ICS 203)

<b>1. Incident Name:</b>		<b>2. Operational Period:</b> 0800-2200	
AGGIE CREEK		Date/Time From: 07/17/2015 0800 FRI	Date/Time To: 07/17/2015 2200 FRI
<b>3. Incident Commander(s) and Command Staff:</b>		<b>6. Logistics Section:</b>	
IC/UC	RICHARD NIETO; JEFF ANDREWS (T) JOHN PIERSON, DEPUTY	CHIEF	DOUGLAS WILLIAMS MARK CATRON, MARGIE GUZMAN (T)
SAFETY OFFICER	ALLAN R SETZER JOSHUA TIBBETTS (T)	MEDICAL UNIT	MIKE LUND ROBERT BACON
INFORMATION OFFICER	IRIS ESTES; HOLLY KRAKE (T)	SUPPLY UNIT	VALERIE WILLIAMS
LIAISON OFFICER	SCOTT COOKE AARON BALDRIDGE	FACILITIES UNIT	RUSSELL FOX
SECURITY MANAGER	GEORGE HEDGES RAMONA WHITE (T)	GROUND SUPPORT UNIT	TONY ARMIJO
<b>4. Agency/Organization Representative(s):</b>		COMMUNICATIONS UNIT	RICK LAZO; BRENT HABERER
<b>Agency/Organization</b>	<b>Name</b>	FOOD UNIT	
STATE OF ALASKA DCNR	PAUL MAKI	RECEIVING AND DISTRIBUTION	T. WITHERS; L.DYER (T)
ALASKA DEPT OF FISH AND GAME	BILL MORRIS	ORDERING UNIT MANAGER	P.HERSEY; J.COLE (T);S.FLETCHER (T)
FAIRBANKS NORTH STAR BOROUGH EMS DIRECTOR	DAVID GIBBS	<b>7. Operations Section:</b>	
ALASKA STATE TROOPER	LT LONNY PISCOYA SGT MIKE ROBERTS	OPS SECTION CHIEF - PLANNING	BILL KING MARK BERNAL (T)
BLM	LENORE HEPPLER	OPS SECTION CHIEF	PAUL DELMERICO; JAMES VILLARD LEROY HOLGUIN (T)
IARR	R-5 FREDDIE ESPINOZA; ANGELA SANCHEZ R-3 ALAN SINCLAIR; FRANK BEDONIE	DIVISION A	N.NOZIE; C.JESSOP (T)
<b>5. Planning Section:</b>		DIVISION G	B.KIDD; D.MARTINEZ
CHIEF	WAYNE A ROBBIE; LANN MOORE, DEPUTY; JEFF HICKERSON (T)	DIVISION T	TERRANCE GALLEGOS
DEMOBILIZATION UNIT	PATRICIA ANN BURNS GERALD SANCHEZ (T)	DIVISION U	TIM FONDRIEST TRENTON GIRARD (T)
RESOURCES UNIT	ANGELA PARKER; KEVIN CONN	DIVISION V/W	JASEN TEAL
SITUATION UNIT	ELIZABETH YOUNGER (T)	INITIAL ATTACK GROUP	JEREMY HANSEN
GIS SPECIALIST	MARILYN RUTH PORTER PHIL WATTS	<b>7b. Air Operations Branch:</b>	
HRSP; TRAINING	G.MELCHOR	AIR OPS BRANCH DIRECTOR	GALEN YOUNG
DOCUMENTATION UNIT	ARTHUR GRIMES	AIR SUPPORT SUPERVISOR	KENT WEDIN
FIRE BEHAVIOR ANALYST	GALEN ROESLER	AIR ATTACK SUPERVISOR	G.BEDDOW; G.DANIELS; A.DAMM (T)
STRATEGIC OP PLANNER	BOB LINEBACK; BILL MILLER	<b>8. Finance/Administration Section:</b>	
INCIDENT METEOROLOGIST	CHRISTIAN CASSELL	CHIEF	BILLY ZAMORA WANDA GALLEGOS (T)
COMPUTER SPECIALIST	BRUCE JULAGAY CHRIS DAWSON	TIME UNIT	S. IMLER-JACQUEZ; P.ATTALA; G.MCCABE
RESOURCE ADVISOR	NOAH LLOYD	COST UNIT	CAROL CHAVEZ
STATUS CHECK IN	WILLIAM KONEN	EQUIPMENT TIME	B.PYSHER; J.HICKMAN (T)
		COMPENSATION UNIT	WANDA CHAVES
<b>9. Prepared By:</b>		<b>Signature:</b>	
ICS 203	Name: ANGELA PARKER	Position/Title: RESL	
	IAP Page	Date/Time: 07/16/2015 2030	



# INCIDENT Weather Forecast



FORECAST NO: 21

NAME OF FIRE: Aggie Creek

PREDICTION FOR: DAY SHIFT

UNIT: Alaska DNR

SHIFT DATE: Friday, July 17<sup>th</sup>, 2015

SIGNED:

TIME AND DATE

Christian Cassell  
Incident Meteorologist

FORECAST ISSUED: 8:00 PM Thursday, July 16<sup>th</sup>, 2015

### WEATHER DISCUSSION:

Today will begin the transition to a wetter pattern at least through the first part of Sunday, with mostly cloudy conditions and scattered showers today along with southwest winds. A strong storm system moving through the western and central interior of Alaska Saturday will bring a high chance of stratiform rain to the fire area beginning Saturday morning and likely persisting into early Sunday. Southwest winds will likely push at least some smoke toward the area from nearby area wildfires.

### WEATHER FORECAST FOR TODAY (FRIDAY):

**WEATHER:** Mostly cloudy with scattered showers.

**TEMPERATURES:** Highs 64 to 70.

**MINIMUM RELATIVE HUMIDITY:** 35 to 45%.

**20 FT WINDS:**

**RIDGETOP** – Southwest wind 6 to 10 mph with gusts to 17 mph.

**SLOPE/VALLEY** – Southwest wind 4 to 8 mph with gusts to 13 mph.

**STABILITY/INVERSION:** Shallow inversion lifting by late morning.

**LAL:** 1

**CHANCE OF WETTING RAIN:** 20%

### TONIGHT (FRIDAY NIGHT):

Mostly cloudy with a chance of showers. Areas of smoke. Lows 53-58. Maximum RHs 75-85%. Southwest wind 10 to 15 mph. Strongest winds on the ridgetops.

### OUTLOOK FOR SATURDAY:

Wetting rains likely. Areas of smoke. Highs 55 to 62. Lows 46 to 53. Southwest wind 10 to 15 mph with gusts to 25 mph. Strongest winds on the ridgetops.

### EXTENDED FORECAST (SUNDAY-TUESDAY):

**Sunday:** Rain ending early. Decreasing clouds through the day. Areas of smoke. Highs 60 to 65. Lows 45 to 50. Minimum RH 50 to 60%. Southwest wind 10 to 17 mph becoming west to west-northwest 7 to 12 mph in the afternoon.

**Monday:** Partly cloudy. Areas of smoke. Highs 69 to 74. Lows 48 to 54. Minimum RH 35 to 40%. Maximum RH 75 to 85%. West wind 5 to 10 mph.

**Tuesday:** Sunny. Areas of smoke. Highs 74 to 79. Lows 50 to 55. Minimum RH 28 to 34%. Maximum RH 75 to 85%. Light winds becoming East to southeast 5 to 10 mph with gusts to 20 mph in the afternoon.

### EXTRA INFORMATION:

Today's Maximum/Minimum Conditions (Thursday, July 16<sup>th</sup>, 2015):

Fairbanks (433 ft): Temp – 75F. Relative Humidity – 26%. Wind – ESE 12 G22 mph.


Alaska Portable 6 (2290 ft): Temp – 72F. Relative Humidity – 25%. Wind – N/A

Caribou Peak (2517 ft): Temp – 68F. Relative Humidity – 29%. Wind – SSE 9 G24 mph.

Chatanika (1626 ft): Temp – 76F. Relative Humidity – 30%. Wind – ESE 4 G21mph.

Wickersham Dome (2229 ft): Temp – 72F. Relative Humidity – 25% Wind – E 10 G20 mph.

# FIRE BEHAVIOR FORECAST

<b>FORECAST NUMBER:</b> 23	<b>TYPE OF FIRE:</b> Wildland Fire
<b>FIRE NAME:</b> Aggie Creek	<b>OPERATIONAL PERIOD:</b> Day Shift, July 17, 2015
<b>DATE ISSUED:</b> July 16, 2015	<b>TIME ISSUED:</b> 2100
<b>UNIT:</b> Alaska DNR	<b>SIGNED:</b> /s/ Galen Roesler FBAN 

## INPUTS

### WEATHER SUMMARY:

Mostly cloudy with scattered showers possible.

See attached Fire Weather Forecast.

## OUTPUTS

### FIRE BEHAVIOR

#### GENERAL:

Yesterday, influenced by warm temperature, low RH, and gusty winds, fire behavior ranged from areas of smoldering to areas of low to moderate intensity surface fire with single tree torching.

Today with cooler temperatures and higher RH fire behavior will consist of smoldering in the duff with areas of creeping and low intensity surface fire. Isolated areas of moderate intensity surface fire may develop where available fuels are more exposed to wind.

Individual tree torching will continue where heat remains in black spruce.

Continue to be aware of reburn potential.

Very dry fuels are causing a lot of heat to be retained in the duff layer despite recent rains.

#### SPECIFIC:

**Divisions A:** Most fire behavior will be smoldering with areas of creeping surface fire. Expect possible backing and flanking from the fire edge at low to moderate intensity where exposed to wind. Predicted southwest winds will be favorable for operations in this division.

**Divisions G & T:** These divisions continue to hold a significant amount of heat. Expect areas of smoldering across these divisions. Scattered low to moderate intensity surface fire are possible, especially where fuels are exposed to the wind. Today's wind direction could again increase burning in tussock area of Division G along the Tatalina River.

**Divisions U, V, & W:** There has been a lot of good mop-up work in these divisions, so little heat remains along the perimeter. Expect scattered areas of smoldering throughout the area. With drying later in the day, there could be isolated areas of creeping surface fire in black spruce stands.

**Hayes Creek Fire:** No activity or spread anticipated.

**Initial Attack:** Expect low intensity burning and low spread on new fires.

Fuel Model	Rate of Spread
Black Spruce	11 feet/min (torching)
Grass/Tussock Tundra	6 feet/min
Mixedwoods, Green	3 feet/min

Forecasted Canadian Forest Fire Danger Rating System Indices for Alaska Portable 6 RAWs for today:

- Fine Fuel Moisture Code (FFMC) 82.8 Moderate
- Initial Spread Index (ISI) 3.7 Moderate
- Buildup Index (BUI) 77.2 High
- Fire Weather Index (FWI) 13.3 Moderate

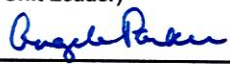

### AIR OPERATIONS:

Areas of smoke may limit air operations early.

### SAFETY:

**Standard Firefighting Order #1** - Keep informed on fire weather conditions and forecasts. Weather has been very dynamic on this incident;

## Division/Group Assignment List (ICS 204 WF)

<b>1. Incident Name:</b>			<b>3.</b>			
AGGIE CREEK			<b>Branch:</b>		<b>Division/Group:</b>	
<b>2. Operational Period:</b> 0800-2200					<b>DIVISION A</b>	
Date/Time From:	Date/Time To:					
07/17/2015 0800	FRI	07/17/2015 2200	FRI			
<b>4. Operations Personnel</b>						
<b>OPERATIONS CHIEF - PLANNING</b>		WILLIAM F KING MARK BERNAL (T)		<b>OPERATIONS CHIEF - FIELD</b>		
				PAUL DELMERICO LEROY HOLGUIN (T)		
<b>DIVISION/GROUP SUPERVISOR</b>		NATHANIEL NOZIE CHRIS JESSOP (T)		<b>AIR ATTACK SUPERVISOR</b>		
				G. BEDDOW; G. DANIELS A. DAMM (T)		
<b>5. Resources Assigned this Period</b>						
Strike Team / Task Force / Resource Designator	LWD	Leader	Number Persons	Drop Off PT./Time	Pick Up PT./Time	
O-134 MODULE - WILDLAND FIRE - PLAX - PLATTE CANYON WFM 5	07/24	DEVIN MACDONALD	12	BASE/0800	BASE/2200	
O-162 HEQB	07/28	JOSHUA KLARE	1	BASE/0800	BASE/2200	
HEQB (RUBICON CREW)	07/23	JOSH TAYLOR	1	BASE/0800	BASE/2200	
E-222 DOZER - D8 CATERPILLER- MIDDLE FORK	08/04	JOSHUA RAY	2	BASE/0800	BASE/2200	
E-220 DOZER/T1 - TEREX - BOYTILLA	07/25	EARL BOYTILLA	1	BASE/0800	BASE/2200	
E-119 FORESTRY MULCHER/MASTICATOR - AK REMOTE BUILDERS	07/18	TONY BUERGE	1	BASE/0800	BASE/2200	
E-149 TRACKED UTILITY VEHICLE- GILLMORE	07/19	MCFADDEN BART	1	BASE/0800	BASE/2200	
E-234 TRACKED UTILITY - NODWELL TRANSPORT SVS	07/28	DUSTIN HARRISON	1	BASE/0800	BASE/2200	
O-128 SOF2	07/23	JONATHAN LEE	1	BASE/0800	BASE/2200	
O-24 EMTF	07/13	AARON SEAMAN	1	BASE/0800	BASE/2200	
<b>6. Control Operations/Work Assignments:</b>						
Continue burnout operations if conditions permit. If fire behavior conditions are favorable, continue dozer line along the ridgetop to the southwest of H30 to protect subdivision to the south.						
<b>7. Special Instructions:</b>						
<ol style="list-style-type: none"> <li>1. Ensure LCES, Test communications and utilize human repeaters and Air Attack if needed.</li> <li>2. Notify Op's prior to any ignitions.</li> <li>3. Establish and communicate trigger points to all personnel.</li> <li>4. Familiarize yourself with Management Action Points (M.A.P.'s) associated with your division, and be prepared to take appropriate actions.</li> <li>5. DIVS; report GPS locations of all surface water withdrawal locations (pumps, engines, aviation) to OSC2 (report in NAD 83 decimal minutes format).</li> <li>6. Notify Planning Ops for Resource and Supply needs by 1600 for next shift. Anticipate ordering 2-3 days in advance.</li> <li>7. Coordinate with Air Attack for any aviation needs.</li> </ol>						
<b>8. Division/Group Communication Summary</b>						
Function	Channel	RX Frequency N/W	RX Tone/NAC	TX Frequency N/W	TX Tone/NAC	Mode
COMMAND	7	167.1000	167.9	169.7500	167.9	A
TACTICAL	1	168.0500	167.9	168.0500	167.9	A
AIR TO GROUND	14	169.8250		169.8250		A
AIR TO GROUND	15	169.9875		169.9875		A
<b>9. Prepared By (Resource Unit Leader)</b>		<b>Approved By (Planning Section Chief)</b>		<b>Date</b>	<b>Time</b>	
ANGELA PARKER RESL 		WAYNE ROBBIE PSC2 		07/16/2015	2200	

## Division/Group Assignment List (ICS 204 WF)

<b>1. Incident Name:</b>			<b>3.</b>			
AGGIE CREEK			<b>Branch:</b>		<b>Division/Group:</b>	
<b>2. Operational Period:</b> 0800-2200					<b>DIVISION G</b>	
Date/Time From: 07/17/2015 0800 FRI		Date/Time To: 07/17/2015 2200 FRI				
<b>4. Operations Personnel</b>						
<b>OPERATIONS CHIEF - PLANNING</b>		WILLIAM F KING MARK BERNAL (T)		<b>OPERATIONS CHIEF - FIELD</b>		
				PAUL DELMERICO LEROY HOLGUIN (T)		
<b>DIVISION/GROUP SUPERVISOR</b>		BEAU KIDD; DAVID MARTINEZ		<b>AIR ATTACK SUPERVISOR</b>		
				G. BEDDOW; G. DANIELS A. DAMM (T)		
<b>5. Resources Assigned this Period</b>						
Strike Team / Task Force / Resource Designator		LWD	Leader	Number Persons	Drop Off PT./Time	Pick Up PT./Time
C-47 CREW - T1 - REDDING IHC		07/26	DANIEL MALLIA	20	BASE/0800	BASE/2200
C-34 CREW - T1 - MT. TAYLOR IHC		07/17	CHRISTIAN BRASHEARS	19	BASE/0800	BASE/2200
E-150 TRACKED UV - NODWELL SVS		07/18	TIM KIEHL	1	BASE/0800	BASE/2200
O-119 SOF2		07/23	ALAN VANDIVER	1	BASE/0800	BASE/2200
O-25 EMPF		07/28	RONALD SANDLER	1	BASE/0800	BASE/2200
<b>6. Control Operations/Work Assignments:</b>						
Mop-up, secure, and hold from Division G/T break to the Tatalina river to protect the Alyeska Trans Alaska pipeline infrastructure and Elliott Highway.						
<b>7. Special Instructions:</b>						
<ol style="list-style-type: none"> <li>1. Ensure LCES, Test communications and utilize human repeaters and Air Attack if needed.</li> <li>2. Notify Op's prior to any ignitions.</li> <li>3. Establish and communicate trigger points to all personnel.</li> <li>4. Familiarize yourself with Management Action Points (M.A.P.'s) associated with your division, and be prepared to take appropriate actions.</li> <li>5. DIVS; report GPS locations of all surface water withdrawal locations (pumps, engines, aviation) to OSC2 (report in NAD 83 decimal minutes format).</li> <li>6. Notify Planning Ops for Resource and Supply needs by 1600 for next shift. Anticipate ordering 2-3 days in advance.</li> <li>7. Coordinate with Air Attack for any aviation needs.</li> </ol>						
<b>8. Division/Group Communication Summary</b>						
Function	Channel	RX Frequency N/W	RX Tone/NAC	TX Frequency N/W	TX Tone/NAC	Mode
TACTICAL	6	166.775	167.9	166.775	167.9	A
COMMAND	8	173.0375	167.9	167.3250	167.9	A
AIR TO GROUND	14	169.8250		169.8250		A
AIR TO GROUND	15	169.9875		169.9875		A
<b>9. Prepared By (Resource Unit Leader)</b>			<b>Approved By (Planning Section Chief)</b>		<b>Date</b>	<b>Time</b>
ANGELA PARKER RESL <i>Angela Parker</i>			WAYNE ROBBIE PSC2 <i>Wayne Robbie PSC2</i>		07/16/2015	2200

## Division/Group Assignment List (ICS 204 WF)

<b>1. Incident Name:</b>			<b>3.</b>				
AGGIE CREEK			<b>Branch:</b>		<b>Division/Group:</b>  <b>DIVISION T</b>		
<b>2. Operational Period:</b> 0800-2200							
Date/Time From: 07/17/2015 0800 FRI		Date/Time To: 07/17/2015 2200 FRI					
<b>4. Operations Personnel</b>							
<b>OPERATIONS CHIEF - PLANNING</b>		WILLIAM KING; MARK BERNAL		<b>OPERATIONS CHIEF - FIELD</b>			
				PAUL DELMERIC; LEROY HOLQUIN (T)			
<b>DIVISION/GROUP SUPERVISOR</b>		TERRANCE GALLEGOS		<b>AIR ATTACK SUPERVISOR</b>			
				G.BEDDOW; G.DANIELS; A. DAMM (T)			
<b>5. Resources Assigned this Period</b>							
Strike Team / Task Force / Resource Designator		LWD	Leader	Number Persons	Drop Off PT./Time	Pick Up PT./Time	
C-48 CREW - T1 - FEATHER RIVER IHC		07/26	ROBERT DANIELS	20	BASE/0800	BASE/2200	
C-52 CREW -T2- BUCKLAND		07/24	ALOYSIOUS POTTEN	16	BASE/0800	BASE/2200	
C-53 CREW - T2 - ST. MICHAEL		07/24	GEORGE KOBUK	19	BASE/0800	BASE/2200	
C-50 CREW - T2 - TEAM RUBICON #3		07/23	E. LEVY	20	BASE/0800	BASE/2200	
O-129 TFLD		07/17	KEVIN RIGGS	1	BASE/0800	BASE/2200	
O-175 SOF2		07/28	CHRIS CHURCH	1	BASE/0800	BASE/2200	
O-50 EMPF		07/17	MATTHEW HORTON	1	BASE/0800	BASE/2200	
O-173 EMTF		07/29	DANIEL BRISTER	1	BASE/0800	BASE/2200	
<b>6. Control Operations/Work Assignments:</b>							
Mop-up and hold containment lines to secure fire perimeter to protect Alyeska Trans-Alaska Pipeline infrastructures, Tatalina subdivision, and Elliott Highway.							
<b>7. Special Instructions:</b>							
<ol style="list-style-type: none"> <li>1. Ensure LCES, Test communications and utilize human repeaters and Air Attack if needed.</li> <li>2. Notify Op's prior to any ignitions.</li> <li>3. Establish and communicate trigger points to all personnel.</li> <li>4. Familiarize yourself with Management Action Points (M.A.P.'s) associated with your division, and be prepared to take appropriate actions.</li> <li>5. DIVS; report GPS locations of all surface water withdrawal locations (pumps, engines, aviation) to OSC2 (report in NAD 83 decimal minutes format).</li> <li>6. Notify Planning Ops for Resource and Supply needs by 1600 for next shift. Anticipate ordering 2-3 days in advance.</li> <li>7. Coordinate with Air Attack for any aviation needs.</li> </ol>							
<b>8. Division/Group Communication Summary</b>							
Function	Channel	RX Frequency N/W	RX Tone/NAC	TX Frequency N/W	TX Tone/NAC	Mode	
TACTICAL	2	168.2000	167.9	168.2000	167.9	A	
COMMAND	7	167.1000	167.9	169.7500	167.9	A	
AIR TO GROUND	14	169.8250		169.8250		A	
AIR TO GROUND	15	169.9875		169.9875		A	
<b>9. Prepared By (Resource Unit Leader)</b>		<b>Approved By (Planning Section Chief)</b>		<b>Date</b>		<b>Time</b>	
ANGELA PARKER, RESL <i>Angela Parker</i>		WAYBE ROBBIE PSC2 <i>for Jeff A PSC2C</i>		07/16/2015		2200	



## Division/Group Assignment List (ICS 204 WF)

<b>1. Incident Name:</b>			<b>3.</b>			
AGGIE CREEK			<b>Branch:</b>		<b>Division/Group:</b>  <b>DIVISION U</b>	
<b>2. Operational Period:</b> 0800-2200						
Date/Time From: 07/17/2015 0800 FRI		Date/Time To: 07/17/2015 2200 FRI				
<b>4. Operations Personnel</b>						
<b>OPERATIONS CHIEF - PLANNING</b>		WILLIAM F KING MARK BERNAL (T)		<b>OPERATIONS CHIEF - FIELD</b>		
				PAUL DELMERICO LEROY HOLGUIN (T)		
<b>DIVISION/GROUP SUPERVISOR</b>		TIM FONDRIEST TRENTON GIRARD (T)		<b>AIR ATTACK SUPERVISOR</b>		
				G. BEDDOW; G. DANNIELS A. DAMM (T)		
<b>5. Resources Assigned this Period</b>						
Strike Team / Task Force / Resource Designator		LWD	Leader	Number Persons	Drop Off PT./Time	Pick Up PT./Time
C-35 CREW - T1 - CARSON HOTSHOTS IHC		07/17	RICHARD SACK	21	BASE/0800	BASE/2200
C-54 CREW - T2 - MT. VILLAGE		07/25	LUKE TUNUTMOAK	20	BASE/0800	BASE/2200
C-49 CREW - T2IA - COBRAS - 4		07/23	J GUADALUPE MACIEL TORRES	22	BASE/0800	BASE/2200
E-236 SKIDGINE - TYPE2 - FBK CONSTRUCTION		07/27	WILLIAM AVERSA	1	BASE/0800	BASE/2200
O-175 SOF2		07/28	CHRIS CHURCH	1	BASE/0800	BASE/2200
O-152 EMPF		07/25	RUSSELL LEAVITT	1	BASE/0800	BASE/2200
O-172 EMTF		07/29	JOSHUA STARBUCK	1	BASE/0800	BASE/2200
<b>6. Control Operations/Work Assignments:</b>						
Mop-up and utilize water to control perimeter and increase protection to Alyeska Trans-Alaska Pipeline, Globe Creek, Tatalina structures, and Elliott Highway.						
<b>7. Special Instructions:</b>						
<ol style="list-style-type: none"> <li>1. Ensure LCES, Test communications and utilize human repeaters and Air Attack if needed.</li> <li>2. Notify Op's prior to any ignitions.</li> <li>3. Establish and communicate trigger points to all personnel.</li> <li>4. Familiarize yourself with Management Action Points (M.A.P.'s) associated with your division, and be prepared to take appropriate actions.</li> <li>5. DIVS; report GPS locations of all surface water withdrawal locations (pumps, engines, aviation) to OSC2 (report in NAD 83 decimal minutes format).</li> <li>6. Notify Planning Ops for Resource and Supply needs by 1600 for next shift. Anticipate ordering 2-3 days in advance.</li> <li>7. Coordinate with air attack for any aviation needs.</li> </ol>						
<b>8. Division/Group Communication Summary</b>						
Function	Channel	RX Frequency N/W	RX Tone/NAC	TX Frequency N/W	TX Tone/NAC	Mode
TACTICAL	5	168.2500	167.9	168.2500	167.9	A
COMMAND	7	167.1000	167.9	169.7500	167.9	A
AIR TO GROUND	14	169.8250		169.8250		A
AIR TO GROUND	15	169.9875		169.9875		A
<b>9. Prepared By (Resource Unit Leader)</b>			<b>Approved By (Planning Section Chief)</b>		<b>Date</b>	<b>Time</b>
ANGELA PARKER, RESL <i>Angela Parker</i>			WAYNE ROBBIE PSC2 <i>Wayne Robbie PSC2</i>		07/16/2015	2200

## Division/Group Assignment List (ICS 204 WF)

<b>1. Incident Name:</b>		<b>3.</b>				
AGGIE CREEK		<b>Branch:</b>		<b>Division/Group:</b>		
<b>2. Operational Period:</b>		<b>DIVISION VW</b>				
0800-2200						
Date/Time From: 07/17/2015 0800 FRI		Date/Time To: 07/17/2015 2200 FRI				
<b>4. Operations Personnel</b>						
<b>OPERATIONS CHIEF - PLANNING</b>		WILLIAM F KING MARK BERNAL (T)		<b>OPERATIONS CHIEF - FIELD</b>		
				PAUL DELMERICO LEROY HOLGUIN (T)		
<b>DIVISION/GROUP SUPERVISOR</b>		JASEN A TEAL		<b>AIR ATTACK SUPERVISOR</b>		
				G. BEDDOW; G. DANIELS A. DAMM (T)		
<b>5. Resources Assigned this Period</b>						
Strike Team / Task Force / Resource Designator		LWD	Leader	Number Persons	Drop Off PT./Time	Pick Up PT./Time
C-51 CREW - T2 - FORT YUKON #2		07/25	DONALD CARROLL	20	BASE/0800	BASE/2200
O-96 STCR		07/20	ROBERT SOLLAMI	1	BASE/0800	BASE/2200
O-175 SOF2		07/28	CHRIS CHURCH	1	BASE/0800	BASE/2200
E-67 ENGINE T6 F-550 A1977A -GSB187 -BIG STATE WILDFIRE		07/20	ISRAEL SILAS	2	BASE/0800	BASE/2200
E-200 DELTA AMBULANCE			MARK ZASTANSKY	1	DP 37/0800	BASE/2200
<b>6. Control Operations/Work Assignments:</b>						
Patrol, mop-up, and secure fireline to prevent further spread to Alyeska Trans-Alaska Pipeline, Elliott Highway corridor, Wickersham area facilities, and White River Recreation area.						
<b>7. Special Instructions:</b>						
<ol style="list-style-type: none"> <li>1. Ensure LCES, Test communications and utilize human repeaters and Air Attack if needed.</li> <li>2. Notify Op's prior to any ignitions.</li> <li>3. Establish and communicate trigger points to all personnel.</li> <li>4. Familiarize yourself with Management Action Points (M.A.P.'s) associated with your division, and be prepared to take appropriate actions.</li> <li>5. DIVS; report GPS locations of all surface water withdrawal locations (pumps, engines, aviation) to OSC2 (report in NAD 83 decimal minutes format).</li> <li>6. Notify Planning Ops for Resource and Supply needs by 1600 for next shift. Anticipate ordering 2-3 days in advance.</li> <li>7. Coordinate with Air Attack for any aviation needs.</li> </ol>						
<b>8. Division/Group Communication Summary</b>						
Function	Channel	RX Frequency N/W	RX Tone/NAC	TX Frequency N/W	TX Tone/NAC	Mode
TACTICAL	3	168.6000	167.9	168.6000	167.9	A
COMMAND	7	167.1000	167.9	169.7500	167.9	A
AIR TO GROUND	14	169.8250		169.8250		A
AIR TO GROUND	15	169.9875		169.9875		A
<b>9. Prepared By (Resource Unit Leader)</b>		<b>Approved By (Planning Section Chief)</b>		<b>Date</b>	<b>Time</b>	
ANGELA PARKER RESL <i>Angela Parker</i>		WAYNE ROBBIE PSC2 <i>Wayne Robbie PSC2</i>		07/16/2015	2200	

## Division/Group Assignment List (ICS 204 WF)

<b>1. Incident Name:</b>			<b>3.</b>			
AGGIE CREEK			Branch:		Division/Group:  <b>INITIAL ATTACK</b>	
<b>2. Operational Period:</b> 0800-2200						
Date/Time From: 07/17/2015 0800 FRI		Date/Time To: 07/17/2015 2200 FRI				
<b>4. Operations Personnel</b>						
<b>OPERATIONS CHIEF - PLANNING</b>		WILLIAM F KING MARK BERNAL		<b>OPERATIONS CHIEF - FIELD</b>		PAUL DELMERICO LEROY HOLGUIN (T)
<b>DIVISION/GROUP SUPERVISOR</b>		J.HANSEN		<b>AIR ATTACK SUPERVISOR</b>		G. BEDDOW; G.DANIELS A. DAMM (T)
<b>5. Resources Assigned this Period</b>						
Strike Team / Task Force / Resource Designator		LWD	Leader	Number Persons	Drop Off PT./Time	Pick Up PT./Time
E-62 ENGINE T6 NORTH DAKOTA 62		07/20	CARSON KERR	3	BASE/0800	BASE/2200
E-219 ENGINE - T6 - SOA-DOF		07/17	RYAN VICE	1	BASE/0800	BASE/2200
E-143 ENG/T4 - FORREST FIRE		07/19	BEN ENGELHARDT	2	BASE/0800	BASE/2200
E-63 ENGINE, T6-NORTH DAKOTA 63		07/20	AARON BUCHOLZ	3	BASE/0800	BASE/2200
E-64 ENGINE, T4, ENG-64 NORTH DAKOTA K 41		07/20	JON COOPER	4	BASE/0800	BASE/2200
E-103 METALLOGENY		07/18	MARIA SANDERS	1	BASE/0800	BASE/2200
<b>6. Control Operations/Work Assignments:</b>						
Engines will support other DIVS with mop-up. All resources will be available for IA as well as the need for structure protection.						
<b>7. Special Instructions:</b>						
<ol style="list-style-type: none"> <li>1. Ensure LCES, Test communications and utilize human repeaters and Air Attack if needed.</li> <li>2. Notify Op's prior to any ignitions.</li> <li>3. Establish and communicate trigger points to all personnel.</li> <li>4. Familiarize yourself with Management Action Points (M.A.P.'s) associated with your division, and be prepared to take appropriate actions.</li> <li>5. DIVS; report GPS locations of all surface water withdrawal locations (pumps, engines, aviation) to OSC2 (report in NAD 83 decimal minutes format).</li> <li>6. Notify Planning Ops for Resource and Supply needs by 1600 for next shift. Anticipate ordering 2-3 days in advance.</li> <li>7. Coordinate with Air Attack for any aviation needs.</li> </ol>						
<b>8. Division/Group Communication Summary</b>						
Function	Channel	RX Frequency N/W	RX Tone/NAC	TX Frequency N/W	TX Tone/NAC	Mode
TACTICAL	6	166.775	167.9	166.775	167.9	A
COMMAND	8	173.0375	167.9	167.3250	167.9	A
AIR TO GROUND	14	169.8250		169.8250		A
AIR TO GROUND	15	169.9875		169.9875		A
<b>9. Prepared By (Resource Unit Leader)</b>			<b>Approved By (Planning Section Chief)</b>		<b>Date</b>	<b>Time</b>
ANGELA PARKER RESL <i>Angela Parker</i>			WAYNE ROBBIE <i>Wayne Robbie</i>		07/16/2015	2200

# AIR OPERATIONS SUMMARY

PREPARED BY: Galen Young

PREPARED DATE/TIME: 07/16/15 2100



1. INCIDENT NAME: Aggie Creek	2. OPERATIONAL PERIOD DATE: 07/17/15	START TIME: 0900	END TIME: 2300	SUNRISE: 0358	SUNSET: 2355
<p>3. REMARKS (Safety Notes, Hazards, Air Operations Special Equipment, etc.)                  Thunderstorms, erratic winds. Low wires, cables, power lines.                  Be aware of Alyeska Pipeline Co. flying the pipeline in rotor wing in AM. They will notify if in area.                  Divisions, contact Wickersham Helibase for all aviation needs, include coordinates of possible helispot/medivac locations.                  Possible smoke concerns.                  Track all retardant usage and location if used.</p>					
Wickersham Helibase 907-347-9613 Heavy Helibase SAT Phone 480-768-2500, Code 8816-325-65864					
6. PERSONNEL	Phone	7. FREQUENCIES	AM	FM	8. FIXED-WING
AODB: Galen Young	575-574-8720	AIR/AIR FW:	120.150		Airtankers
ASGS: Kent Wedin 907-378-8211	575-538-1075	AIR/AIR RW:	121.050		Leadplanes
ATGS: Gerry Beddow	928-386-3743	AIR/GRD: Pri		169.8250	ATBase +
ATGS: Gary Daniel	602-499-5297	AIR/GRD: Sec		169.9875	ATGS Aircraft
ATGS(T): Antom Damm	360-561-1989	COMMAND:		See Com Plan	AA- N975AA Beddow
HEB2: Rita Clipperton	530-559-0905	DECK:		163.100	AA- N249CP Daniel, Damm
		AIR GUARD:		168.626	Fort Wainwright
				Tone 110.9	

## 9. HELICOPTERS (Use Additional Sheets As Necessary)

FAA N#	TY	MAKE/MODEL	BASE	AVAILABLE	START	REMARKS	FAA N#	TY	MAKE/MODEL	BASE	AVAILABLE	START	REMARKS
N173BH	3	A-Star	Wainwright	0900	1000								
N73HJ	2	Bell 212	Wainwright	0900	1000								
N611CK	1	S-61	Wainwright	0900	1000								
N214TH	1	Bell 214	Wainwright	0900	1000								

# HEALTH AND SAFETY MESSAGE

*SAFETY* starts with *YOU*

We are ALL accountable for SAFE behaviors

For Day Operations: July 17, 2015

INCIDENT: **Aggie Creek**

Date Prepared: July 16, 2015

TIME: 1600

## Major Hazards and Risks:

- **Wildlife: Bear sightings have increased. Take appropriate bear safety measures!**
- **Driving: Slow down while driving in camp, on the fire, and on the Elliot Highway!**
- **Complacency: Work hard and stay focused to the end.**

Fire Order of the Day: *Give clear instructions and ensure they are understood.*

- **Task** = What is to be done?
- **Purpose** = Why it is to be done. What are the values at risk?
- **End State** = How it should look when done?

## Human Factor Barriers to Situation Awareness

### Low Experience Level with Local Factors

- Unfamiliar with the area or the organizational structure.

### Distraction from Primary Task

- Radio traffic
- Conflict
- Previous errors
- Collateral duties
- Incident within an incident

### Fatigue

- Carbon Monoxide
- Dehydration
- Heat stress
- Poor fitness level can reduce resistance to fatigue
- 24-hours awake affects your decision making capability like .10 blood alcohol content.

IRPG pg. X

***Thanks from your Safety Team!!***

## MAKE SURE YOU WEAR YOUR PPE!



# Wear gloves

Approved by: *Josh Tibbetts*- SOF2(t)

Incident Action Plan Safety Analysis		Operational Period: <b>Day Shift- July 17, 2015</b>		Incident: <b>Aggie Creek</b>					
Identification of Hazards and Risk Assessment		Assignment: Multi-All (Suppression-Indirect, etc.)		Mission Objective(s): <b>Safety of Incident Responders and Public</b>					
Pre-mitigation		Mitigation(s), Warnings and Remedies		Post-mitigation					
Hazards	Probability	Severity	Risk Level	Division/Group Branch - Location	Mitigation(s), Warnings and Remedies	Probability	Severity	Risk Level	Acceptable Yes/No
Driving	Likely	Critical	Serious	ALL	Slowdown in fire area, observe speed limits; Lights on; Practice "Defensive Driving"; Use spotter when backing; Evaluate road conditions and avoid driving on wet or muddy roads if possible;	Occasional	Significant	Minor	Yes
Foot Travel	Likely	Critical	Serious	ALL	Keep spacing while hiking; scout route of travel; continually scan surrounding and "take your time";	Occasional	Significant	Minor	Yes
Dehydration Heat Related Illness	Likely	Critical	Serious	ALL	Early recognition of heat of HEAT RELATED ILLNESS; Take frequent break; Drink fluids throughout shift; store extra water at drop points; eat snacks throughout the shift.	Occasional	Significant	Minor	Yes
Line Construction	Frequent	Critical	Critical	ALL	Ensure LCES is in place Use <b>Downhill Line Checklist</b> (IRPG pg. 8) Utilize <b>Risk Management Process</b> (IRPG pg. 1). Do not rely on aircraft as mode of transportation.	Occasional	Critical	Moderate	Yes
Wildlife (Bears, moose, etc)	Likely	Critical	Serious	ALL	No food in sleeping areas Do not leave food scraps on the fireline or spike camp; back haul away all food garbage daily Avoid surprising bears at close distance, make plenty of noise, look for bear sign Never run from a bear, stand upright and tall, don't bend over. Detour around areas where you see fresh animal carcasses or fresh bear scat Be alert for moose crossing roadways while driving. Never approach moose on the fireline; safely leave area	Rarely	Critical	Minor	Yes
Ignition Operations	Likely	Critical	Serious	G and A	Only personnel trained in the use of each device will be authorized to use firing equipment. Wear appropriate PPE. Ensure all personnel are aware of firing operation that may affect them, i.e. adjacent divisions. Ensure aerial/ground ignition plans have been adequately developed and personnel are briefed.	Occasional	Critical	Moderate	Yes
Chainsaw Operations	Likely	Catastrophic	Critical	ALL	" <b>Hazard Tree Guidelines</b> " (IRPG pg. 22-23) Look up, down and around for hazard tree indicators. Only fell and buck trees within your expertise and training. Follow " <b>Procedural Felling Operations</b> " (IRPG pg. 79). Do not fell trees in high wind events.	Occasional	Catastrophic	Serious	Yes

**Incident Action Plan Safety Analysis** Incident: **Aggie Creek**

Operational Period: **Day Shift- July 17, 2015**

**Identification of Hazards and Risk Assessment** Mission Objective(s): **Safety of Incident Responders and Public**

Assignment: **Multi-All (Suppression-Indirect, etc.)**

Pre-mitigation			Mitigation(s), Warnings and Remedies			Post-mitigation			
Hazards	Probability	Severity	Risk Level	Division/Group Branch - Location		Probability	Severity	Risk Level	Acceptable Yes/No

<b>Air Operations</b>	Occasional	Catastrophic	Serious	ALL	Follow Aviation Watchout Situations (IRPG pg. 43) Don't plan on air resources for transport or re-supply. <b>Directing Retardant and Bucket Drops</b> (IRPG pg. 57) Be thoroughly briefed on aerial ignition plans and ops. Don't work down slope from equipment. Ensure eye contact with operator. Operator is the only person allowed on moving equipment; Ensure operators have and wear proper PPE; Provide ample distance between crews and equipment based on fuel type. Ensure operators have adequate communication; Maintain high level of situational awareness when working behind equipment.	Rarely	Catastrophic	Moderate	Yes
<b>Heavy Equipment</b>	Likely	Catastrophic	Critical	ALL	Ensure personnel have proper training/certification and utilize proper PPE(helmets, gloves, etc); UTV will be equipped with Roll Over Protection System (ROPS); drive slowly and only use if essential for operations.	Rarely	Catastrophic	Moderate	Yes
<b>ATV/UTV Operations</b>	Likely	Catastrophic	Critical	ALL	Utilize Public Information Officers to keep public informed of risks; keep area closed, if possible, to general public travel; use liaison officers as necessary; use local law enforcement personnel for any necessary evacuations.	Occasional	Critical	Moderate	Yes
<b>Public</b>	Likely	Catastrophic	Critical	ALL	Refer to mitigations for heavy equipment; refer to steep terrain mitigations; maintain proper spacing of 8'-10'; wear proper PPE; Do not work above or below personnel during rehab/mop-up operations; Alert crew personnel of rolling debris by yelling to affected individuals;	Occasional	Critical	Moderate	Yes
<b>Mop-up and Fireline Rehab</b>	Occasional	Critical	Moderate	ALL		Rarely	Critical	Minor	Yes

Operations Section Chief /s/  Date / Time: **7/16/15 21:00** /s/ 

ICS 215A

**Risk Level**  
 CRITICAL-RED  
 SERIOUS-ORANGE  
 MODERATE-YELLOW  
 MINOR-BLUE  
 NEGLIGIBLE-GREEN

**Likelihood/Probability**  
 Frequent- Likely to occur often  
 Probable- Will occur several times  
 Occasional- Likely to occur sometime  
 Remote- Unlikely to occur, but possible  
 Improbable- So unlikely, it can be assumed it will not occur

**Severity/Consequences**  
 Catastrophic- Results in fatality/fatalities and/or loss of system  
 Critical- Severe injury and/or major system damage  
 Marginal- Minor injury and/or minor system damage.  
 Negligible- Less than minor injury/or less than minor damage

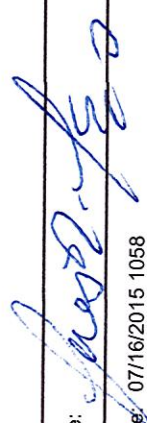
# INCIDENT RADIO COMMUNICATIONS PLAN (ICS 205)

<b>1. Incident Name:</b>	<b>2. Date/Time Prepared:</b>	<b>3. Operational Period:</b>
AGGIE CREEK	Date: 07/16/2015 Time: 1058	0800-2200
<b>4. Basic Radio Channel Use:</b>		Date/Time From: 07/17/2015 0800
		Date/Time To: 07/17/2015 2200

Zone Group	Ch #	Function	Channel Name/Trunked Radio System Talkgroup	Assignment	RX Freq	RX Tone/NAC	TX Freq	TX Tone/NAC	Mode (A, D, or M)	Remarks
	1	TACTICAL	TAC 1	DIVISION A	168.0500	167.9	168.0500	167.9	A	
	2	TACTICAL	TAC 2	DIVISION T	168.2000	167.9	168.2000	167.9	A	
	3	TACTICAL	TAC 3	DIVISION VW	168.6000	167.9	168.6000	167.9	A	
	4	TACTICAL	TAC 4	DIVISION G	166.7250	167.9	166.7250	167.9	A	
	5	TACTICAL	TAC 5	DIVISION U	168.2500	167.9	168.2500	167.9	A	
	6	TACTICAL	TAC 6	INITIAL ATTACK	166.775	167.9	166.775	167.9	A	
	7	COMMAND	CMD 6	COMMAND 6	167.1000	167.9	169.7500	167.9	A	HAYSTACK MTN.
	8	COMMAND	CMD 7	COMMAND 7	173.0375	167.9	167.3250	167.9	A	WICKERSHAM DOME
	9	COMMAND	CMD 8	COMMAND 8	170.0500	167.9	164.5750	167.9	A	ICP
	11	COMMAND	DOF A	COMM W/ LOCAL	151.2650		159.2700	141.3	A	ESTER DOME
	12	COMMAND	DOF B	COMM W LOCAL	151.2950		159.3000	141.3	A	NANANA; IA ONLY
	13	TACTICAL	IA TAC 1	COMM W/LOCAL	159.3750		159.3750		A	IA ONLY
	14	AIR TO GROUND	A/G 6	A2G TACTICAL	169.8250		169.8250		A	PRIMARY
	15	AIR TO GROUND	A/G 8	A2G AIR ATTACK	169.9875		169.9875		A	
	16	AIR GUARD	AIR GUAR	AIR GUARD	168.6250	110.9	168.6250	110.9	A	EMERGENCY USE ONLY

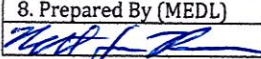
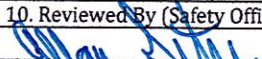
**5. Special Instructions:**

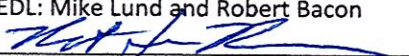

---

<b>6. Prepared By</b> (Communications Unit Leader)	Name: RICK LAZO
ICS 205	IAP Page
Signature: 	
Date/Time: 07/16/2015 1058	



### Medical Plan (ICS 206 WF)

1. Incident/Project Name		2. Operational Period 0800-2200	
AGGIE CREEK		Date/Time From: 07/17/2015 0800 Wed	Date/Time To: 07/17/2015 2200 Wed
<b>6. Area Location Capability</b>			
Branch Division/Group			
DIV. G	EMS Responders & Capability:	Sandler EMPF	
	Equipment Available On Scene:	Backboard, Trauma, ALS, O2, Narcs	
	Medical Emergency Channel:	COMMAND 7	
	ETA For Ambulance to Hospital:		
	Air:	30 minutes	
	Ground:	2 hours	
	Approved Helispot:	H-90	
	Lat:	N65° 18'	
Long:	W148° 19' 49.4394"		
DIV. V	EMS Responders & Capability:	Delta Ambulance	
	Equipment Available On Scene:	ALS Ambulance	
	Medical Emergency Channel:	COMMAND 7	
	ETA For Ambulance to Hospital:		
	Air:	30 minutes	
	Ground:	1 hour	
	Approved Helispot:	H-160	
	Lat:	N65° 14.652	
Long:	W148° 05.657		
DIV. U	EMS Responders & Capability:	Leavitt EMPF : Starbuck EMTF	
	Equipment Available On Scene:	ALS, Narcs, O2, Trauma	
	Medical Emergency Channel:	COMMAND 7	
	ETA For Ambulance to Hospital:		
	Air:	30 minutes	
	Ground:	1 hour	
	Approved Helispot:	H-120	
	Lat:	N65° 15.766	
Long:	W148° 09.597		
DIV. A	EMS Responders & Capability:	Seaman EMTF	
	Equipment Available On Scene:	Trauma, BLS, O2	
	Medical Emergency Channel:	COMMAND 7	
	ETA For Ambulance to Hospital:		
	Air:	30 minutes	
	Ground:	2 hour	
	Approved Helispot:	H-50	
	Lat:	N65° 10.966'	
Long:	W148° 21.487'		
DIV. T	EMS Responders & Capability:	Horton EMPF : Brister EMTF	
	Equipment Available On Scene:	Backboard, ALS, Narcs, Trauma	
	Medical Emergency Channel:	COMMAND 7	
	ETA For Ambulance to Hospital:		
	Air:	30 minutes	
	Ground:	1.5 hours	
	Approved Helispot:	H-95	
	Lat:	N65° 17' 54.8412"	
Long:	W148° 17' 46.2588"		
DIV. W	EMS Responders & Capability:	Delta Ambulance	
	Equipment Available On Scene:	ALS Ambulance	
	Medical Emergency Channel:	COMMAND 7	
	ETA For Ambulance to Hospital:		
	Air:	30 minutes	
	Ground:	1 hour	
	Approved Helispot:	Helibase	
	Lat:	N65° 10.316	
Long:	W148° 05.784		
8. Prepared By (MEDL)	9. Date/Time	10. Reviewed By (Safety Officer)	11. Date/Time
	07/16/15 2100		07/16/15 2100

MEDICAL PLAN 206		FIRE NAME Aggie Creek		DATE PREPARED 07/16/15		WORK PERIOD 07/17/15					
<b>AID STATIONS/EMT PLACEMENT</b>											
NAME		LOCATION		PHONE		PARAMEDIC YES NO					
Mike Lund EMIF/ Robert Bacon EMPF		ICP		575-770-6694 / 907-371-5736		X					
Matt Horton EMPF		Div. T		919-622-1295		X					
Daniel Brister EMTF		Div. T		406-224-3583				X			
Russ Leavitt EMPF		Div. U		435-772-4107		X					
Josh Starbuck EMTF		Div. U		406-203-2200				X			
Ron Sandler EMPF		Div. G		707-218-7824		X					
Aaron Seaman EMTF		Div. A		425-923-7440				X			
Laura Belino EMT		Wickersham Dome Base Camp		509-860-1189				X			
Hermann EMT : Baumfalk EMP		Delta Ambo Div V+W:DP 37		907-687-1582		X					
<b>AMBULANCE SERVICES</b>											
NAME		LOCATION		PHONE		PARAMEDIC YES NO					
Delta Ambulance		DP 37				X					
Steese Fire/EMS		800 William C. Leary LN.; Fairbanks, AK		907-450-6504		X					
<b>AIR AMBULANCE</b>											
NAME		PHONE		TYPE OF AIRCRAFT		CAPABILITY					
INCIDENT AIRCRAFT		BY RADIO HELITAK		A-STAR 73BH 212 73HJ		1PT SITTING 1 PT Backboard					
GUARDIAN FLIGHT ALASKA (FIXED)		888-997-3822		KINGAIR 200/LEARJET 35		1 ALS/2 BLS					
STATE TROOPERS/ ARMY MAST		907-451-5100		BLACK HAWK		SHORT/LONG HAUL, ALS					
<b>HOSPITALS</b>											
HOSPITAL		LOCATION		TRAVEL TIME AIR/GROUND		PHONE		HELIPAD YES NO		BURN CENTER YES NO	
FAIRBANKS MEMORIAL LEVEL 3 TRAUMA		1650 COWLES ST FAIRBANKS, AK 99701 N 64° 49.94, W 147° 44.52		30 MIN 1 HR		907-458-5555		X			
1 <sup>ST</sup> CARE CENTER CLINIC/URGENT CARE		1101 NOBLE ST FAIRBANKS, AK 99701 8 AM TO 8 PM, 7 DAYS		N/A 1 HR		907-459-3500				X	
PROVIDENCE ALASKA LEVEL 3 TRAUMA		3200 PROVIDENCE DR. ANCHORAGE, AK 99508 N 61° 50.09, W 149° 49.08		2 HRS 6 HRS		907-212-3111		X			
HARBORVIEW MEDICAL CENTER LEVEL 1 TRAUMA		325 9 <sup>TH</sup> AVE SEATTLE, WA 98104 N 47° 36.14, W 122° 19.21		3 HRS TOO FIX FAR		206-284-2876		X		X	
MEDL: Mike Lund and Robert Bacon 				Safety: 							

# Medical Incident Report

*Use items one through nine to communicate situation to communications/dispatch.*

**1. CONTACT COMMUNICATIONS/DISPATCH**

*Ex: "Communications, Div. Alpha. Stand-by for Priority Medical Incident Report." (If life threatening request designated frequency be cleared for emergency traffic.)*

**2. INCIDENT STATUS: Provide incident summary and command structure**

<b>Nature of Injury/Illness</b>		<i>Describe the injury (Ex: Broken leg with bleeding)</i>
Incident Name:		<i>Geographic Name + "Medical" (Ex: Trout Meadow Medical)</i>
Incident Commander:		<i>Name of IC</i>
Patient Care:		<i>Name of Care Provider (Ex: EMT Smith)</i>

**3. INITIAL PATIENT ASSESSMENT:** *Complete this section for each patient. This is only a brief, initial assessment. Provide additional patient info after completing this 9 Line Report. See page 100 for detailed Patient Assessment.*

Number of Patients:	Male/Female	Age:	Weight:
Conscious?	<input type="checkbox"/> YES		<input type="checkbox"/> NO = <b>MEDEVAC!</b>
Breathing?	<input type="checkbox"/> YES		<input type="checkbox"/> NO = <b>MEDEVAC!</b>
Mechanism of Injury: <i>What caused the injury?</i>			
Lat./Long. (Datum WGS84) <i>Ex: N 40° 42.45'x W 123° 03.24'</i>			

**4. SEVERITY OF EMERGENCY, TRANSPORT PRIORITY**

SEVERITY	TRANSPORT PRIORITY
<input type="checkbox"/> <b>URGENT-RED Life threatening injury or illness.</b> Ex: Unconscious, difficulty breathing, bleeding severely, 2°-3° burns more than 4 palm sizes, heat stroke, disoriented.	Ambulance or MEDEVAC helicopter. Evacuation need is <b>IMMEDIATE.</b>
<input type="checkbox"/> <b>PRIORITY-YELLOW Serious injury or illness.</b> Ex: Significant trauma, not able to walk, 2°-3° burns not more than 1-2 palm sizes	Ambulance or consider air transport if at remote location. Evacuation may be <b>DELAYED.</b>
<input type="checkbox"/> <b>ROUTINE-GREEN</b> Not a life threatening injury or illness. Ex: Sprains, strains, minor heat-related illness	Non-Emergency. Evacuation considered <b>Routine of Convenience.</b>



**SOUTHWEST  
INCIDENT MANAGEMENT  
TEAM #5  
RICH NIETO – INCIDENT COMMANDER**

---

July 12, 2015

**To: All Incident Personnel for the Aggie Creek Fire (AK-FAS-511515)**

**From: Richard Nieto, Incident Commander**

**Subject: Ethical Behavior and Conduct**

The Southwest Area Incident Management Team 5 is committed to the highest principles of ethical behavior and conduct. This team fully endorses the laws and policies regarding discrimination, harassment, hazing, and other inappropriate behavior, and will not tolerate misconduct in any form. We expect an attitude of mutual respect for all incident personnel and the public we serve.

As Incident Commander, I expect all personnel assigned to this incident to carry themselves with the highest level of conduct and integrity. As ambassadors, I encourage each of you to represent this Incident Management Team, as well as your agency in a professional and respectful manner.

I am committed to the policy that everyone is entitled to a safe work environment from the moment of dispatch until your return to the home unit. I expect and demand nothing less than work practices that reflect a “Safety First” attitude.

Your actions reflect upon all of us.

Sincerely,

*Richard Nieto*

---

Richard Nieto  
Incident Commander  
Southwest Interagency Management Team #5



## HUMAN RESOURCES MESSAGE

### Aggie Creek Fire, Fairbanks, AK

July 17, 2015

## *STRESS* REMINDERS

- Take action, don't ignore your stress.
- Stay in touch with team members and communicate.
- Talk and share feelings.
- Replenish, rest, get some down time.

Stress is normal and everyone has it.

~ ~ ~ ~ ~

## **TRAINING MESSAGE**

**TRAINEES**: The Incident Trainee/Trainer Data Form is included in today's IAP for your convenience and use. Complete and submit the form to Gina Melchor, Training Specialist (t), for entry into the database before the end of your assignment. A drop box will be located in the North to Alaska tent to collect the forms, and I'll be at the briefing each morning to pick up the forms at that time. Remember to close out all training packages with methe TNSP (t) during DEMOB.

Thank you, Gina Melchor, HRSP/TNSP (t)

# Incident Trainee/Trainer Data Form

Complete and drop off with the Training Specialist for entry into database before end of assignment. Remember to close out all training packages with the Training Specialist prior to going through DEMOB.

## A. Trainee Data

Trainee Name: \_\_\_\_\_ ICS Trainee Position: \_\_\_\_\_  
IFPM Trainee? Y N      FS-FPM Trainee? Y N      Regional Priority Trainee? Y N  
Request # (A, C, E or O): \_\_\_\_\_ Agency Designator (Example: AK-FAS): \_\_\_\_\_  
Agency: \_\_\_\_\_ Crew/Module Name: \_\_\_\_\_ Cell Phone: \_\_\_\_\_  
Fire Name: \_\_\_\_\_ Date Assigned: \_\_\_\_\_

## **Person and location your training package should be mailed to: (Supervisor, Training Officer, etc.):**

Name: \_\_\_\_\_ Title: \_\_\_\_\_ Home Unit: \_\_\_\_\_  
Agency Address: \_\_\_\_\_  
City: \_\_\_\_\_ State: \_\_\_\_\_ Zip Code: \_\_\_\_\_ Phone: \_\_\_\_\_

## B. Trainee Prerequisites

1. Valid Red Card or agency certification card?  Yes  No
2. Trainee has current position task book issued by home unit?  Yes  No

## C. Trainer/Evaluator Data

Trainer / Evaluator Name: \_\_\_\_\_  
ICS position on fire: \_\_\_\_\_ Home Unit: \_\_\_\_\_  
Address: \_\_\_\_\_ City: \_\_\_\_\_  
State: \_\_\_\_\_ Zip Code: \_\_\_\_\_ Cell / Contact : \_\_\_\_\_

## D. Trainee Goals - (3 tasks or objectives you would like to address).

1. \_\_\_\_\_
2. \_\_\_\_\_
3. \_\_\_\_\_

07/17/2015

TENTATIVE RELEASE

AGGIE CREEK US-AK-FAS-511515

OVERHEAD

O-105	0600	(EMTF)	NELSON, BRADLEY W
O-104	0600	(EMPF)	POVEDA, MICHAEL
O-168	0600	(RADO)	RODDY, MIA
O-27	0800	(STPS)	HOSTETLER, MICHAEL KIM
O-4	0900	(RADO)	HUNTER, MICHAEL



07/18/2015

TENTATIVE RELEASE

AGGIE CREEK US-AK-FAS-511515

**CREWS**

C-34	0800	(HC1)	CREW - T1 - NMCIF - MT. TAYLOR
C-35	0830	(HC1)	CREW - T1 - CARSON HOTSHOTS

**EQUIPMENT**

E-62	0600	(ENG6)	ENGINE T6 NORTH DAKOTA 62
E-63	0600	(ENG6)	ENGINE, T6-NORTH DAKOTA 63
E-64	0600	(ENG4)	ENGINE, T4, ENG-64 NORTH
E-170	1800	(TRLR)	TRAILER - HELICOPTER
E-225	1800	(TRLR)	HELICOPTER OPS TRAILER - DOF

**OVERHEAD**

O-50	0600	(EMPF)	HORTON, MATTHEW MICHAEL
O-100	0600	(TFLD)	KIDD, BEAU
O-106	0700	(MEDL)	BELINO, LAURA
O-129	0830	(TFLD)	RIGGS, KEVIN
O-142	1600	(SEC2)	DEMANTRY, IVOR E
O-141	1600	(SEC2)	DONNELLY, BRIAN
O-140	1600	(SEC2)	WAILES, JAY
O-139	1600	(SEC2)	WALKER, DEBORAH L
O-37	1800	(COMP)	CROUCH, DAWN MICHELLE
O-7	2100	(RADO)	ZBICHORSKI, STEVEN
O-91.46	2300	(SOPL)	MILLER, WILLIAM D

**07/19/2015**

**TENTATIVE RELEASE**

**AGGIE CREEK US-AK-FAS-511515**

**OVERHEAD**

<b>O-97</b>	<b>0600</b>	<b>(DIVS)</b>	<b>FONDRIEST, TIM</b>
<b>O-8</b>	<b>0900</b>	<b>(RADO)</b>	<b>PALKKI, JULIE ANN</b>
<b>O-68</b>	<b>1600</b>	<b>(SEC1)</b>	<b>MILLS, MICHAEL JOHN</b>
<b>O-184</b>	<b>2200</b>	<b>(TIME)</b>	<b>MCCABE, GLORIA</b>

# Aggie Creek Fire

## Telephone List 7/17/2015



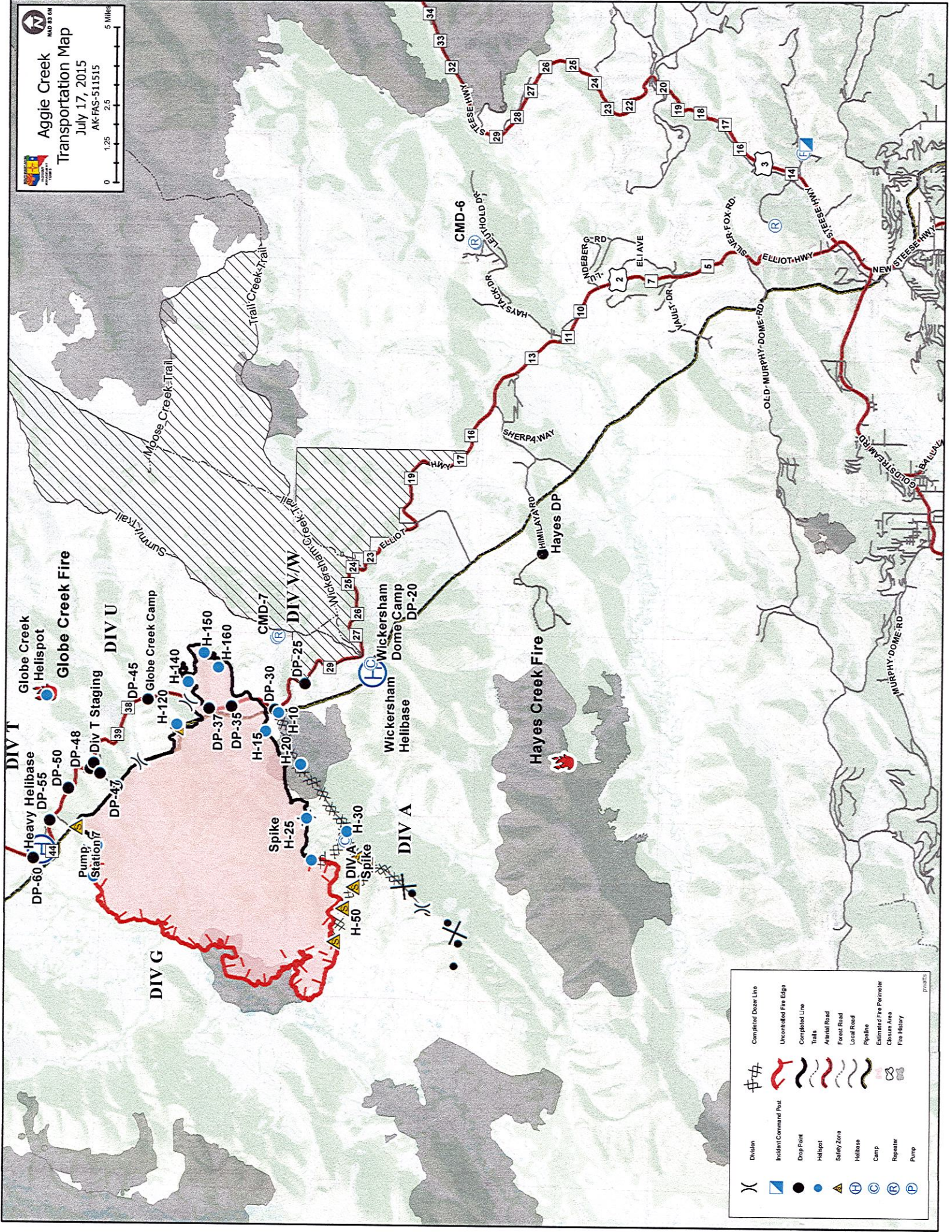
Demob: 907-451-1271  
Demob Fax: 907-451-1253  
Plans: 907-451-1238  
Finance: 907-451-1278  
IC: 907-451-1247  
Ordering Fax: 907-451-1231  
INFO: 907-451-1206  
COMP/Claims 907-451-1284  
Supply Track Phone: 907-750-8236  
Supply (Valerie Williams): 575-751-4716  
Security SECM (T) (Ramona): 575-361-4402

Ground Support: 928-848-2474  
Helibase (Rita): 530-559-0905  
Wickersham Helibase: 907-347-9613  
Base Camp Food (Hess): 619-495-9276  
Base Camp Mgr. (Harley): 907-347-3580  
Base Camp Supply (John): 907-750-7816  
LOGS: 907-451-1279  
Security (George Hedges): 205-269-0728  
IMET (Christian): 907-250-5541  
COMMO Cell: 907-687-5918  
COMMO Landline: 907-451-1203

## Cell Phone List

IC: Rich Nieto 907-687-3265  
IC: John Pierson 907-388-6448  
Plans: Wayne Robbie 907-378-4176  
Liaison: Scott Cooke 907-388-2678  
SOPL: Bob Lineback 907-371-0179  
Air OPS: Galen Young 575-574-8720  
Air Support: Kent Wedin 907-378-8211

Communications: Rick Lazo 907-371-5626  
Medical: Robert Bacon 907-371-5736  
Finance: Billy Zamora 907-347-4802  
Logistics: Margie Guzman 907-799-9560  
Safety: Allan Setzer 907-371-7786  
Supply: Valerie Williams 907-388-0961



	Division		Completed Dozer Line
	Incident Command Post		Uncontested Fire Edge
	Drop Point		Completed Line
	Helispot		Trails
	Safety Zone		Aerial Road
	Helibase		Forest Road
	Camp		Local Road
	Repeater		Pipeline
	Pump		Estimated Fire Perimeter
			Cause Area
			Fire History



