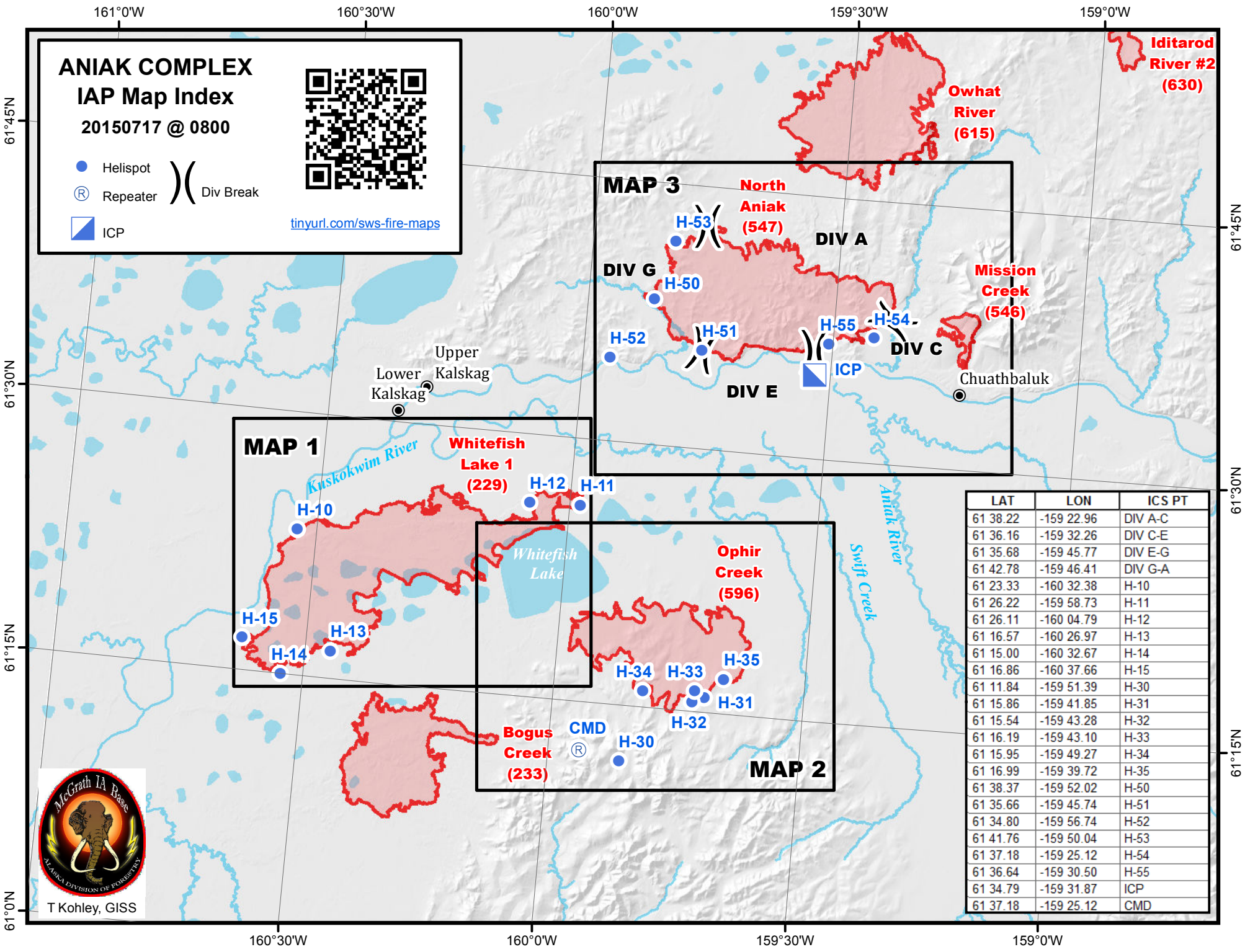


ANIAK COMPLEX
IAP Map Index
 20150717 @ 0800



- Helispot
 - Ⓡ Repeater
 - ▣ ICP
-)) Div Break

tinyurl.com/sws-fire-maps



MAP 1

Whitefish Lake 1 (229)

H-10, H-11, H-12, H-13, H-14, H-15

MAP 2

Ophir Creek (596)

Bogus Creek (233)

CMD

H-30, H-31, H-32, H-33, H-34, H-35

MAP 3

North Aniak (547)

DIV A, DIV G, DIV E, DIV C

H-50, H-51, H-52, H-53, H-54, H-55

ICP

| LAT | LOX | ICS PT |
|----------|------------|---------|
| 61 38.22 | -159 22.96 | DIV A-C |
| 61 36.16 | -159 32.26 | DIV C-E |
| 61 35.68 | -159 45.77 | DIV E-G |
| 61 42.78 | -159 46.41 | DIV G-A |
| 61 23.33 | -160 32.38 | H-10 |
| 61 26.22 | -159 58.73 | H-11 |
| 61 26.11 | -160 04.79 | H-12 |
| 61 16.57 | -160 26.97 | H-13 |
| 61 15.00 | -160 32.67 | H-14 |
| 61 16.86 | -160 37.66 | H-15 |
| 61 11.84 | -159 51.39 | H-30 |
| 61 15.86 | -159 41.85 | H-31 |
| 61 15.54 | -159 43.28 | H-32 |
| 61 16.19 | -159 43.10 | H-33 |
| 61 15.95 | -159 49.27 | H-34 |
| 61 16.99 | -159 39.72 | H-35 |
| 61 38.37 | -159 52.02 | H-50 |
| 61 35.66 | -159 45.74 | H-51 |
| 61 34.80 | -159 56.74 | H-52 |
| 61 41.76 | -159 50.04 | H-53 |
| 61 37.18 | -159 25.12 | H-54 |
| 61 36.64 | -159 30.50 | H-55 |
| 61 34.79 | -159 31.87 | ICP |
| 61 37.18 | -159 25.12 | CMD |



T Kohley, GISS